



ADVANCED MANUFACTURING INDUSTRY 4.0 HUB

The Advanced Manufacturing Industry 4.0 Hub is a Victorian Government initiative being delivered in partnership with Swinburne University of Technology supported by the Innovative Manufacturing CRC (IMCRC).



Jobs,
Precincts
and Regions



FUTURE-PROOFING VICTORIAN MANUFACTURING SMEs

Going digital is now becoming a necessity for manufacturing SMEs. Future-proof your business by redefining how you create and capture value enabled through Industry 4.0 opportunities. Re-think your product portfolio, business processes, and decisions around new technologies and data-driven services.

The Advanced Manufacturing Industry 4.0 Hub, an initiative of the Victorian Government delivered in partnership with Swinburne University of Technology and supported by the Innovative Manufacturing CRC (IMCRC) intends to help Victorian manufacturers:

- Connect to global supply chains
- Compete on differentiated value (not cost/price)
- Adopt innovative business models
- Enhance global competitiveness

What is the Advanced Manufacturing Industry 4.0 Hub?

It is a new platform for businesses to experience and road-test advanced manufacturing technologies and new business strategies in collaboration with Swinburne.

Located at Swinburne's Factory of the Future, the Hub takes Victorian manufacturing SMEs on a digital transformation journey to help them define their digital strategies and redefine how to create and capture value. We work with you to increase your digital maturity and provide training to help you enhance your business enabled through Industry 4.0 opportunities.

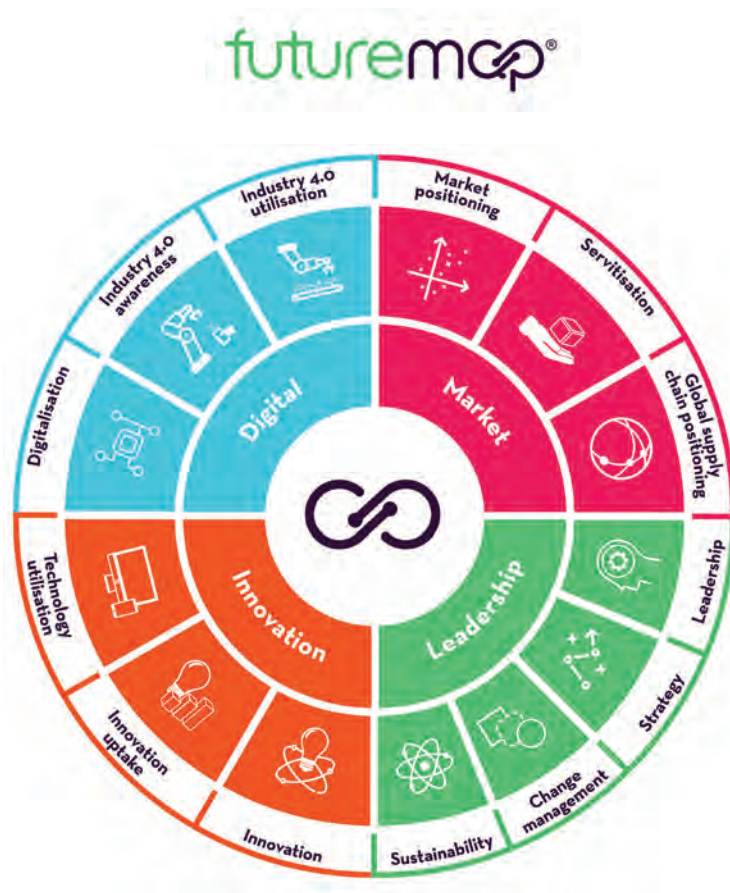
OUR APPROACH

1 futuremap® business diagnostic

A self-diagnostic tool designed to help you assess your business' current capabilities and raise your awareness and understanding about the opportunities Industry 4.0 and digitalisation can create for your business in relation to the following areas:

- Market positioning
- Leadership, strategy and change management
- Innovation and use of technology
- Digital manufacturing (Industry 4.0).

Typically delivered through an interactive workshop, futuremap generates a point-in-time assessment and report that identifies opportunities for growth and potential investment. The report also outlines educational materials and a broad ecosystem of supporting organisations and programs.



FOUR INDUSTRIAL REVOLUTIONS

18th Century



Mechanisation

Manufacturing replaces agriculture as society's economic basis, through steam-powered mechanisation.

19th Century



Electricity and mass production

Large factories and organised production enabled due to electricity, the combustion engine, the steel industry; the telegraph and telephone.

20th Century



The digital age

Automation, robotics and miniaturisation as a result of electronics (microprocessors and transistors), computers and telecommunications.

21st Century



Industry 4.0

New approaches to processes and production due to exponential expansion and merging of physical, digital and virtual technologies.

EXPLORE

your capabilities and Industry 4.0 enabled business opportunities and outcomes

LEARN

about digitalisation through Industry 4.0 training

CREATE

Industry 4.0 enabled business, product and technology strategies

2 futuremap® Industry 4.0 readiness assessment

Combines an in-depth, face-to-face assessment and workshops designed to prepare your business to realise and implement Industry 4.0 opportunities.

Consisting of three modules the futuremap® assessment helps you to:

MODULE A: increase your Industry 4.0 process and production readiness

MODULE B: discover new business opportunities enabled by Industry 4.0 technologies

MODULE C: create a business plan for Industry 4.0 technology implementation.

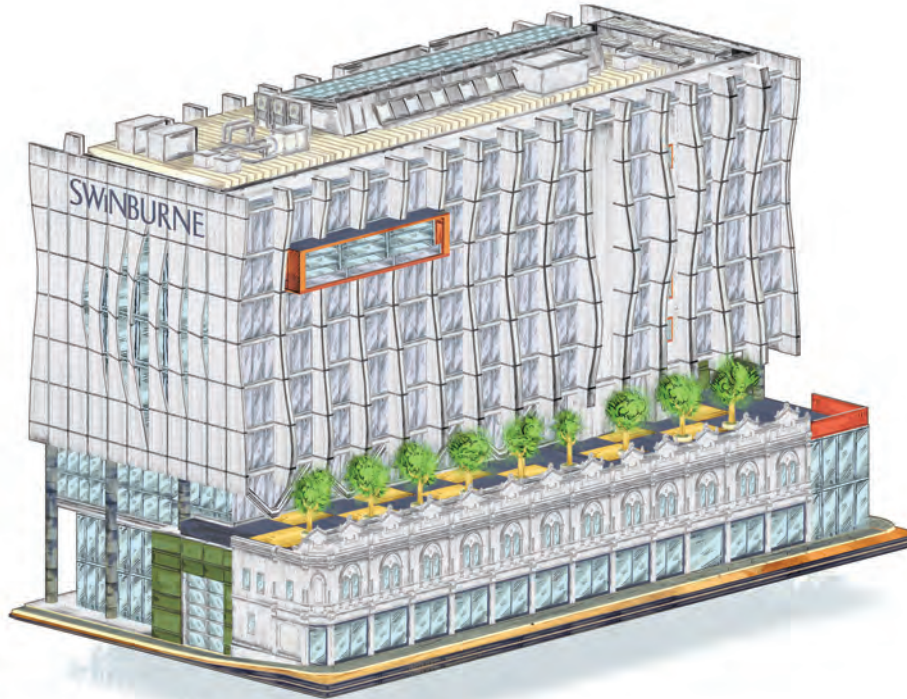
Best results are achieved by engaging with each of the three modules, however each module can be completed individually.

3 Training

Businesses that have participated in futuremap® modules will also be provided with a two-week intensive Industry 4.0 technical and business model innovation training. Technical training may include:

- Integration of sensors
- Data analytics
- Robotics
- Digital twin.

futuremap® has been developed by the Innovative Manufacturing CRC (IMCRC), partly in collaboration with the Fraunhofer Institutes. It is delivered to Victorian manufacturing SMEs by the Advanced Manufacturing Industry 4.0 Hub. The Victorian Government is supporting the delivery of the Industry 4.0 readiness assessment.



Step into the future with us

Download the **SwinburneVR** App from your app store. After you launch the app, hold your phone / device horizontal in front of you then move the phone towards the left or right until you find the Augmented Reality Factory of the Future button on the brick wall. Press the button, then hover your phone / device over the image above for an immersive AR experience of Swinburne's Factory of the Future - home of the Advanced Manufacturing Industry 4.0 Hub.

FURTHER INFORMATION

industry4hub@swin.edu.au

swinburne.edu.au/industry4hub

