

AccessAbility

Assistance for students living with disability, medical condition, mental illness or those with carer responsibilities

Swinburne is committed to helping all of our students achieve their full potential. Students living with disability, medical condition, mental illness and those with carer responsibilities have access to free services through *AccessAbility* Services.

Eligibility requirements

To be eligible for assistance you must:

- be enrolled in a course at Swinburne
- have an ongoing or temporary disability or medical condition or mental illness or carer responsibilities
- register with *AccessAbility* Services.

Registering assistance

To register for *AccessAbility* Services check the eligibility guidelines and complete these forms:

- *AccessAbility* documentation form (must be completed by qualified health professional)
- consent to release information form.

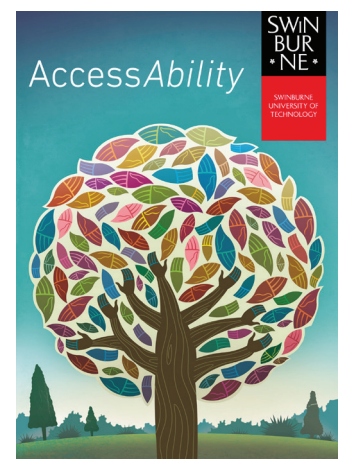
All documents required for registration are available on the *AccessAbility* Services website or from the *AccessAbility* Adviser at your campus.

Available services

Once you have registered an *AccessAbility* Adviser will discuss the services and reasonable adjustments that are available to you.

These may include:

- note-taking software
- participation assistance
- reader/writer
- Auslan interpreters/live captioning
- alternative formatting of course material
- assistive technology
- equitable assessment arrangements.



Equitable assessment arrangements

Equitable Assessment Arrangements (EAA) allows you to complete assessment tasks, such as exams, with some form of adjustment to standard exam conditions.

For example, depending on your circumstances, you may be provided with one or more of the following:

- extra writing or reading time, or an extra break per hour
- a reader or writer
- an ergonomic chair
- a small group room
- a computer
- an enlarged exam paper

To be eligible for equitable assessment arrangements you must be registered with *AccessAbility Services*.

Equitable assessment arrangements must be organised with *AccessAbility Services*:

- Pathway and Vocational Education students – at least one week before a test
- Higher Education students – at least four weeks before an exam

Emergency arrangements can sometimes be made by contacting *AccessAbility Services* as early as possible before the exam period.

Special consideration

AccessAbility Services is not connected with the special consideration process. Students seeking special consideration of their exam or assessment performance need to submit an application online and provide relevant documentation.

Please visit this link for more information:

www.swinburne.edu.au/current-students/manage-course

Further information

Telephone: (03) 9214 5234

Email: accessability@swinburne.edu.au

swinburne.edu.au/accessability

CRICOS Provider code: 00111D

