

■ DEGREES AND DIPLOMAS

QUICK GUIDE

2013

SWIN  
BUR  
NE

SWINBURNE  
UNIVERSITY OF  
TECHNOLOGY

[swinburne.edu.au](http://swinburne.edu.au)





# Swinburne

## The right university for you.

**“** Swinburne was awarded more five-star ratings than any other university in Melbourne by *The Good Universities Guide 2012*. **”**

Discover an education that prepares you for success with career-focused courses, lecturers with industry experience, impressive facilities and much more. By the time you graduate from Swinburne, you'll have the skills and knowledge you need to start your career.

### **Career-ready graduates**

At Swinburne our focus is on preparing you for a successful career. We maintain close relationships with industry partners to ensure you learn what you need to know. With opportunities such as industry placements, professionally focused team projects and international study, you can get the skills and experience you need – and employers look for – not just the theory.

### **Multiple learning options**

Whether you're just starting out or returning to study, Swinburne offers courses that give you the opportunity to achieve your personal best education goals and that can meet your career aspirations. We have entry levels for all students and pathways from vocational study to degree courses. You can choose the style and level of learning that suits you.

### **World-ranked university**

Swinburne is an internationally recognised research-intensive university. We have been ranked in the top 450 universities in the world by the QS World University Rankings – that's the top three per cent of universities worldwide. *The Good Universities Guide 2012* awarded us more five-star ratings in the 'educational experience' category than any other university in Melbourne, including for teaching quality and graduate satisfaction.

### **Course flexibility and choice**

Students are at the centre of everything we do. By providing high-quality courses with flexible structures and alternative study modes you have more control over achieving your qualification. Many courses allow you to select the style of learning that suits your life – full- or part-time study, on-campus or online. Whatever your choice, you will experience a personalised approach to learning in a welcoming and supportive environment.

# Campuses in great locations

Swinburne offers first-rate facilities in top inner-urban or local locations, near excellent transport, food, shopping and entertainment options.

## Hawthorn campus (main campus)

John Street, Hawthorn  
6 km (10 to 15 minutes by train) from the CBD

**Train:** Glenferrie station on the Belgrave, Lilydale and Alamein lines. The station is in the heart of the campus.

**Tram:** Number 16 tram along Glenferrie Road to St Kilda.

**Parking:** On campus (up to \$6.50 all day). Off-campus ticketed parking is also available.

**Accommodation:** Several options on campus, including a Residential College and UniLodge apartments; see page 6 for details.

Set among the cafés, boutiques and bookshops of Glenferrie Road, and with the convenience of on-campus accommodation, parks, supermarkets and a train station practically on campus, the Hawthorn campus offers an ideal balance between study and lifestyle.

You can gain qualifications in areas including arts and social sciences; business, commerce and management; design (from 2014); engineering; health sciences; information and communication technologies; media and communications; psychology; and science.

## Wantirna campus

369 Stud Road, Wantirna  
25 km from the CBD  
(close to Knox City Shopping Centre)

**Train and bus:** Catch the train to Ringwood station (Belgrave and Lilydale lines) and then the 664 bus, which will drop you off at the campus entrance.

**Parking:** On campus for free.

Home to the KIOSC Trade Training Centre, the Wantirna campus has many purpose-built teaching and learning facilities.

Programs you can study include certificates and diplomas, which are delivered in areas such as business and management, children's services, environment, information technology, manufacturing, nursing and visual arts.

## Croydon campus

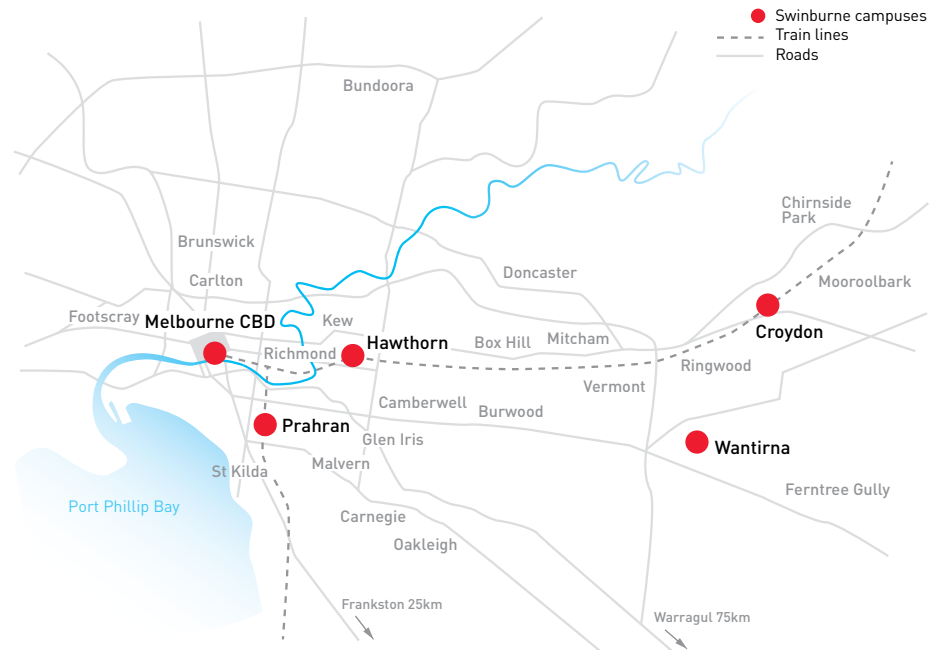
12–50 Norton Road, Croydon  
30 km (40 minutes by train) from the CBD

**Train:** Croydon station on the Lilydale line. From the station it is a 10-minute walk to campus, or you can take the 737 bus.

**Parking:** On campus for free.

The Croydon campus is situated in the foothills of Mt Dandenong, near local parks and shopping. It is home to the \$10 million Green Trades Centre and specialises in trades-related training.

You can study programs from Certificate I level to advanced diplomas in the areas of business, building, community services, computing, health and wellbeing, and social sciences. There is a particular focus on youth programs such as pre-apprenticeships, the Victorian Certificate of Applied Learning (VCAL) and VET in VCE.



## Prahran campus

144 High Street, Prahran  
5 km (10 minutes by train) from the CBD

**Train:** Prahran station on the Sandringham line. The station is a two-minute walk from campus.

**Tram:** Number 6 tram passes by the campus. Numbers 78 and 79 travel along Chapel Street, while Numbers 5 and 64 travel nearby on Dandenong Road and Number 72 on Commercial Road/Malvern Road.

**Bus:** Number 216/219 and Number 220 travel along Commercial Road/Malvern Road.

**Parking:** On- and off-campus ticketed.

Note: After 2013, teaching of courses offered at Prahran will continue at Hawthorn.

## Melbourne CBD campus

196 Flinders Street, Melbourne

**Train and tram:** The campus is a two-minute walk from Federation Square tram stops and Flinders Street Station.

**Parking:** Paid parking is available on Flinders Street or at Federation Square.

## Sarawak campus

Kuching, East Malaysia  
3 km (15 minutes by bus or car) from the city centre

The Sarawak campus is situated in Kuching, the capital city of the state of Sarawak, on the island of Borneo. The campus offers programs that are identical to those offered at our Australian campuses. It features custom-designed buildings for studies in business, design, engineering, computing and science. Sarawak offers a convenient and seamless destination for an international study experience.

## Multimillion-dollar facilities

Major refurbishments and new infrastructure are a feature at all of our campuses. The development of new buildings, renovation of existing buildings and landscaping enhance the education experience and study environment we offer our students.

Cutting-edge facilities include:

- the Advanced Technologies Centre (Hawthorn campus), which features state-of-the-art laboratories and research and education facilities. It houses a 550-seat retractable lecture theatre, 40 high-tech learning spaces and the Smart Structures Laboratory – the only one of its kind in Australia – for leading-edge research in structural engineering.
- The George building (Hawthorn campus), a seven-storey student services hub, named after university founder George Swinburne. It features study areas, a games room, and careers, employment and health services.
- the Swinburne Design Factory (Prahran campus), the first 'living lab' dedicated to design at an Australian university. The Design Factory model enables multidisciplinary teams of students to work on research-led collaborations with external partners.
- the Green Trades Complex (Croydon campus), which is the first of its kind in Victoria. It provides 'green' training for apprentices in the fields of building, construction and plumbing, preparing them to apply new skills to the new technologies and practices needed for a low-carbon and sustainable future.
- the KIOSC Trade Training Centre (Wantirna campus), a high-tech learning centre that offers senior secondary students a range of integrated and flexible programs, including VCE specialist studies and nationally recognised vocational qualifications in science, technology, engineering, electro technology, printing and graphic arts.



# Study options for every student

No matter what your background, Swinburne has a wide range of study options to suit your academic level, preferred learning style and career aspirations.

## I'm a VCE student

Swinburne is committed to helping you choose the right course, transition smoothly from school to university and get on track to your chosen career.

### Get the right advice

If you're unsure of which course to choose, or confused about the structure of your degree, Swinburne provides personalised advice on our Course Information Hotline (1300 275 794). You can also arrange a one-on-one consultation with a course adviser to discuss your study options.

In addition, our annual Open Day and information expos and events give you the information you need to smooth the secondary-to-tertiary transition.

Visit [www.swinburne.edu.au/events](http://www.swinburne.edu.au/events) to find out what's on at Swinburne.

### Pathways to university degrees

If you complete a Swinburne diploma or advanced diploma, you are eligible to enter (with advanced standing) the later stages of a university degree. There are two credit-transfer pathways – Pathways Direct and the Guaranteed Entry Scheme. See page 10 for more information about these programs.

Students who successfully complete an associate degree can progress to achieve a bachelor degree with one extra year's study. See page 8 for further details.

## Scholarships

Swinburne, government and privately funded scholarships are available to prospective and current students. We have a variety of merit and equity-based options available – see page 14 for further details.

### Deferring your study

If you want a break before starting your course, you can take advantage of our mid-year entry or deferment options.

Swinburne offers most new undergraduate students the option to defer their study for up to two years. Diploma and certificate applicants can usually defer for up to one year. Forms can be downloaded from [www.swinburne.edu.au/deferment](http://www.swinburne.edu.au/deferment)

### Special Entry Access Scheme

Swinburne participates in the Special Entry Access Scheme (SEAS), for VTAC applicants who have been unable to reach their full educational potential. Visit [www.swinburne.edu.au/seas](http://www.swinburne.edu.au/seas) for more information and eligibility criteria.

### Support for elite athletes

Swinburne is proud to be a member of the Elite Athlete Friendly University (EAFU) network. As an EAFU, Swinburne offers eligible students flexible study options to help balance their sporting and academic commitments.

Visit [www.swinburne.edu.au/elite-athletes](http://www.swinburne.edu.au/elite-athletes)

## I'm a Year 10 student

Year 10 is a good time to start thinking about what you want to do when you finish school, and what you can do at school to prepare for it. Swinburne offers a range of options – including alternatives to the standard VCE – to help you discover what further study is about and explore your potential.

Visit [www.swinburne.edu.au/year10](http://www.swinburne.edu.au/year10)

### Vocational Education and Training in Schools

Vocational Education and Training in Schools (VETiS) allows you to take on skills-based learning while completing your VCE or VCAL. You'll study one of our certificate-level courses and gain practical hands-on skills while you're still at school. Depending on the course you could be studying on campus at Swinburne or at one of our partner schools.

The skills and qualification you gain through VETiS can count towards a further certificate, diploma or advanced diploma. You can then choose to progress to a degree course through our Guaranteed Entry Scheme.

Visit [www.swinburne.edu.au/vetinschools](http://www.swinburne.edu.au/vetinschools)

### Victorian Certificate of Applied Learning

The Victorian Certificate of Applied Learning (VCAL) is an alternative to the VCE, and gives students in Years 11 and 12 practical, work-related experience and the opportunity to build personal skills that are important in work and life.

Visit [www.swinburne.edu.au/vcal](http://www.swinburne.edu.au/vcal)

### Apprenticeships and traineeships

Apprenticeships and traineeships are certificate courses that combine paid work with nationally recognised training, so you can earn while you learn. Your employer will teach you on the job, while Swinburne provides the formal training for a nationally recognised qualification.

Visit [www.swinburne.edu.au/apprenticeships](http://www.swinburne.edu.au/apprenticeships)

### KIOSC Trade Training Centre

KIOSC is a joint initiative of secondary schools in the City of Knox and Swinburne. This high-tech learning centre provides a learning environment where senior secondary students can make more-informed decisions about their future, build skills and improve their career prospects.



## I'm returning to study

Whether you're returning to study after a gap year or you're in the workplace and want to retrain for a promotion or career change, we understand that returning to study has its own challenges. Swinburne offers additional services that can make your study life easier.

### Recognition for the skills you already have

If you have previous work experience or education, you might be closer to a qualification than you think.

Recognition of Prior Learning (RPL) recognises existing knowledge and experience and measures it against the qualification in which you are enrolled, meaning you may not need to complete all the units of your course.

With RPL you can:

- eliminate or reduce the need for training in skills and knowledge you already have
- save time in attending classes and completing unnecessary work
- save money on textbooks and other learning resources
- complete your qualification in less time
- advance more quickly to a higher level qualification.

Visit [www.swinburne.edu.au/rpl](http://www.swinburne.edu.au/rpl)

### Flexible study options

Swinburne offers various study options to fit in with your work and life commitments. Depending on your chosen course, options can include online and block mode delivery, blended learning programs (a combination of on- and off-campus study), workplace delivery and part-time study. Our online course search allows you to search for courses available in a particular study mode.

Visit [www.swinburne.edu.au/courses](http://www.swinburne.edu.au/courses)

### Associate degrees

Swinburne's new associate degrees are two-year higher education qualifications based on hands-on skills and practical outcomes. See page 8 for further information.

## Online degrees

Swinburne Online offers accredited programs in an online learning environment. The degrees are designed to meet the educational needs of people with commitments that keep them from studying on campus. See page 8 for more details.

### Help for retrenched workers

The Victorian Government's Skill Up program is available for retrenched workers, giving you the opportunity to upgrade your skills or develop new skills so you can re-enter the workforce as quickly as possible. You can receive course guidance counselling and up to 80 hours of training.

### Special Entry Access Scheme

Mature age students applying through VTAC may be eligible for entry through the Special Entry Access Scheme (SEAS).

Visit [www.swinburne.edu.au/seas](http://www.swinburne.edu.au/seas) for further details and eligibility criteria.

## Short courses

Swinburne offers short courses in a wide range of areas, from event marketing and management to bookkeeping and creative writing. Short courses can give you a taste of your chosen field of study, and you can even get credit for some units if you move into a certificate course. Swinburne also provides short courses that will help you start and run your own business, if that's where your ambitions lie.

Visit [www.swinburne.edu.au/shortcourses](http://www.swinburne.edu.au/shortcourses)

## Studying abroad

The cultural experience of international study offers you a personal growth opportunity: to develop insight, communication skills and a depth of understanding. There are several international study opportunities for both degree and diploma students, and your international study experience is usually credited towards your course.

With a wide range of scholarships and travel grants, we make it easier to add an international dimension to your qualification.

Visit [www.swinburne.edu.au/abroad](http://www.swinburne.edu.au/abroad)

### International exchange

The International Exchange Program allows you to immerse yourself in a culture for an extended period of study at one of Swinburne's partner institutions.

Currently we have more than 90 partner institutions in the following countries:

- |             |               |
|-------------|---------------|
| ■ Austria   | ■ Ireland     |
| ■ Canada    | ■ Italy       |
| ■ Chile     | ■ Japan       |
| ■ China     | ■ Malaysia    |
| ■ Columbia  | ■ Mexico      |
| ■ Denmark   | ■ Netherlands |
| ■ England   | ■ Scotland    |
| ■ Finland   | ■ South Korea |
| ■ France    | ■ Sweden      |
| ■ Germany   | ■ USA.        |
| ■ Hong Kong |               |

### Short-term programs

A variety of short-term international study programs are also available. These are designed to enable you to develop personal and professional skills while visiting exciting destinations around the world. Short-term programs are perfect for internationalising your course in a short amount of time, ranging in duration from two weeks to over a month.

### Study at Swinburne in Sarawak

Swinburne's campus in Sarawak, East Malaysia, is a great option if you want an international experience that offers myriad academic, personal and professional benefits, but is still close to home. Unlike any other study abroad program location, the courses offered at our Sarawak campus are almost identical to those offered at our Australian campuses. This makes it simple to plan what you will study during your time at Sarawak.

# Accommodation options

From the Residential College to student apartments to off-campus rooms and houses, a range of housing options is available.

For all accommodation options visit [www.swinburne.edu.au/housing](http://www.swinburne.edu.au/housing)

## On-campus accommodation

### Hawthorn

#### Residential College and Apartments

The 84-bed student Residential College is right in the heart of the Hawthorn campus, and provides a safe and supportive environment for first-year or international students. Accommodation in the Residential College costs between \$280 and \$300\* per week per person, including gas, water, electricity and a daily continental breakfast.

There are also 151 beds available in the two- and three-bedroom on-campus apartments, providing independent living for more senior students. Apartments range from \$220 to \$270\* per week per person, including gas, water and electricity.

#### UniLodge@Swinburne Place

The 125 UniLodge designer apartments at Swinburne Place are fully furnished, featuring televisions and modern kitchens with crockery and cutlery. They also include a common room with a pool table and plasma televisions, a laundry and outdoor barbecue area. The apartments have electronic keycard access and security camera CCTV surveillance. Single-room studios and four-, three- and two-bedroom apartments are available, costing between \$219 and \$371\* per week per person including gas, water and electricity.

### UniLodge Vivida

The UniLodge Vivida complex comprises 194 fully furnished studio apartments. They feature ensuite bathrooms, security keycard access and CCTV surveillance, flat-screen televisions and DVD players in each room, private balconies, air-conditioning and dishwashers (selected apartments only). Common facilities include a rooftop garden and barbecue area, and laundry facilities. Apartments cost between \$279 and \$299\* per week including water and gas.

\*Prices listed are current for 2012.

## Off-campus accommodation

### All campuses

The university has a database of housing vacancies around each of the Swinburne campuses.

**Residential scholarships**  
Swinburne offers a number of residential scholarships to students living on campus at Hawthorn.



# Campus life

Our campuses offer lively and inclusive communities. A range of facilities and services are provided to support and help you balance the demands of study with your other interests, giving you opportunities to meet like-minded people and have fun along the way so you can get the most out of your study experience. Many of these facilities and services are funded in part by the annual student amenities fee.

Visit [www.swinburne.edu.au/aroundswinburne](http://www.swinburne.edu.au/aroundswinburne) to find out about the places students love on and around our campuses.

## Clubs and societies

Swinburne clubs and societies are active on every campus. Covering every social, religious, sporting, regional, political and cultural interest you can think of, there's bound to be something for you. And if not, you can always start your own!

## Events and activities

Each campus has a packed calendar of events and cultural activities – from free barbecues and lunchtime gigs to themed parties, balls and getaways – allowing you to create a balance between study and life while on campus.

## Wireless networking

Wireless network access at Swinburne means that you can turn on your laptop or mobile phone at any time, anywhere within the coverage areas, and have access to the internet and university network.

## Computer labs

Swinburne offers a number of PC labs to assist you in completing your assignments.

The Hawthorn campus library provides a Late Lab, which offers 24-hour, seven-day-a-week access.

## Libraries

As a Swinburne student you will have access to the extensive collection of resource material in any of our campus libraries. Resources available for student use include books, journals and electronic resources. The libraries also have workstations, computers, printers, scanners and photocopiers for student use.

## Careers and employment

Swinburne's experienced careers advisers offer free advice on graduate recruitment programs, apprenticeships, traineeships, jobs at Swinburne and elsewhere, and how to start your own business.

Swinburne also offers free résumé-checking services, interview practice sessions, and career seminars and workshops.

## Sport and recreation

The Hawthorn campus offers gym facilities and personal training (at student-friendly rates). Hawthorn also has several sporting clubs for students to join.

## The George

The George building at the Hawthorn campus, named after university founder George Swinburne, is a seven-storey student services building that features study areas, a games room, and careers, employment and health services. It's a great place to catch up on your reading or meet friends between classes.

## Disability support services

Swinburne is committed to increasing and enhancing educational opportunities for people with disabilities. Disability Liaison Officers are available on each campus. They can assist with adaptive technologies, campus parking and access, alternative assessment arrangements and study support, and will formulate an appropriate support strategy with each student.

Visit [www.swinburne.edu.au/disability](http://www.swinburne.edu.au/disability)

## Childcare facilities

Swinburne has childcare centres at the Hawthorn, Prahran, Croydon and Wantirna campuses. Centres operate Monday to Friday; fees apply.

## Counselling

Swinburne students can access free counselling for any study, work, personal or relationship issues they are experiencing.

## Financial advice

Each of our campuses employs a financial adviser to assist students free of charge with managing budgets, student loans and other financial issues.

## Legal advice

Swinburne provides free and confidential legal advice to students. The service encourages and supports students in solving their own legal and related problems.

## Health services

Friendly and accessible health services are available across all campuses, including free appointments with registered nurses (all campuses) and bulk-billed appointments with doctors (Hawthorn campus).

# Degrees and double degrees

Swinburne's personalised approach to learning puts you at the heart of everything we do. Our degrees give you the skills you need – not just the theory – so you'll have first-hand knowledge of what's needed when you start work.

## Flexible course structure

Our flexible course structure allows you to add depth and breadth to your degree, by letting you choose from an extensive range of subjects from different disciplines.

## Majors

Most three-year degrees at Swinburne comprise 24 units of study. You undertake most of these units in your primary area of study, which becomes your major.

## Elective units

The remaining units that make up your degree are called elective units, which you can use to explore related or non-related areas of interest.

Note: Some four-year degrees may not offer the same flexibility.

## Minors

Studying a minor will allow you to expand your career options by adding another area of expertise. You can also add depth to your qualification by studying units related to your major.

## Double degrees

Double degrees are a great way to broaden your study experience and are highly respected by employers. They combine two areas of study, and on completion you will be awarded two degrees. A double degree is generally only one year longer than a single degree.

Swinburne offers a range of double degrees, including combinations such as aviation/commerce, commerce/arts, engineering/commerce, engineering/science and design/business. For a full list of the available double degrees, visit [www.swinburne.edu.au/courses](http://www.swinburne.edu.au/courses) or see the relevant study area in this guide.

## Honours

Many degrees at Swinburne offer an additional specialised honours (fourth) year. An honours year is intended to provide students who possess demonstrated academic ability with the opportunity to pursue their undergraduate studies at an advanced level. This allows you to deepen your understanding in your major field and develop your research skills. The honours course is a recognised point of entry into postgraduate research studies.

## Online degrees

Swinburne Online offers accredited undergraduate programs in an online learning environment. The degrees are designed to meet the educational needs of people with commitments that keep them from studying on campus at university. Commonwealth supported places are available for Swinburne Online degrees.

All of our courses have been designed specifically for online delivery and support. Learning content is provided through a combination of online readings and group learning exercises.

Degrees can be completed in as little as two years, with a maximum duration of 10 years. Currently, Swinburne Online offers degrees in business, marketing, communications, psychology, information systems and public relations.

Visit [www.swinburne.edu.au/online](http://www.swinburne.edu.au/online)

## Associate degrees

Swinburne's new associate degrees are two-year qualifications based on hands-on skills and practical outcomes. They offer smaller class sizes and more support from teaching staff.

Associate degrees combine practical instruction with the technical and theoretical knowledge needed for a range of specialist and generalist careers. The curriculum is relevant and thorough, and taught by academic staff who are highly qualified and industry-experienced.

On successful completion of an associate degree, you can progress to achieve a bachelor degree with one year's extra study. For example, if you complete the Associate Degree of Business Administration, you may progress to the third year of the Bachelor of Business Administration.

You could also apply to achieve diploma or advanced diploma qualifications (depending on the qualification) for study completed throughout the associate degree, graduating with more than one qualification.

Associate degrees are available in the areas of business, design, digital media, engineering, health and community services, and information and communications technology.

## Summer and Winter terms

Swinburne's Summer and Winter terms give you the flexibility to spread out your study load to fit around your work and life commitments, or finish your course sooner.

Visit [www.swinburne.edu.au/summer-winter](http://www.swinburne.edu.au/summer-winter)

## Industry Engaged Learning

Industry Engaged Learning programs allow you to engage directly with industry, giving you an understanding of the broader work environment.

## Industry-Based Learning

Industry-Based Learning (IBL) gives you practical experience during your undergraduate degree. IBL is a six- or 12-month paid work placement in the industry of your intended career.

During your placement you will have the support of mentors and the opportunity to build contacts in your industry. IBL can also be a gateway to future employment. Many participants return to work full-time for their IBL employer.

Note: IBL is not available to international students due to student visa conditions.

## Capstone Projects

Capstone Projects are professionally focused, practical team projects normally completed in your final year of study. Projects may be externally sourced industry or community projects, competitions, research-based projects or internally developed projects.

The diverse nature of these projects make every experience unique – you could make valuable industry contacts, connect with an exciting community project or develop an industry solution that kickstarts your career.

Visit [www.swinburne.edu.au/capstone](http://www.swinburne.edu.au/capstone)

## Internships

Internships help you gain professional and practical skills in your chosen industry. You will be placed with an employer to work on a research project or undertake work experience under the guidance of industry and academic supervision. Internships are usually for two or three days a week throughout the semester and you will also attend weekly seminars during that time. Internships are unpaid and are equivalent to a unit of study, which means that you earn credit towards your degree.

## Careers in the Curriculum

Careers in the Curriculum helps you develop your career-planning skills. This is a free but compulsory unit for all students enrolled in an undergraduate degree. You will develop a personal study and career plan, and explore available job options.

Visit [www.swinburne.edu.au/cic](http://www.swinburne.edu.au/cic)

# Certificates and diplomas

Whether you are preparing for your first job, looking to retrain or taking the first step in a career change, a certificate, diploma or advanced diploma could be the right choice for you. These courses are focused on learning for work, or in many cases, learning at work. They help you to build the practical skills and technical expertise that make you employable.

## Preparation for your career

Swinburne certificate and diploma graduates are in demand by employers because they are industry ready. During your course, you'll be using the equipment and technology you'll encounter once you start your job. All of our programs have work-based elements, which can include work placements and projects, work scenarios and simulations to ensure you are work ready.

## Choosing the right qualification

The course you choose depends on your current level of knowledge and what you want to achieve. It is also possible to progress between levels as your skills and knowledge grow.

### Foundation level

If you left school before completing Year 12 or missed out on the basics, a foundation course may suit you.

### Certificate I and II

Courses at this level provide basic training in a specific industry area. The courses aim to get you started in an industry or provide the specific skills your employer wants. Many Certificate I and II courses are pre-apprenticeships.

### Certificate III and IV

Certificate III and IV courses provide entry into various trades, traineeships or other jobs that require skills and knowledge beyond a basic level.

### Diploma and advanced diploma

Courses at diploma and advanced diploma level help you to progress to a university degree or get started in a paraprofessional job. Alternatively, they can give you the skills to get a promotion, or the confidence to handle increased expectations at work.

## Vocational Learning Framework

Our Vocational Learning Framework focuses on helping you achieve your learning, workplace and career needs. The framework provides you with individual attention to assist you with all aspects of your study experience. It offers individual learning and assessment planning, support and a full range of services.

You will be assigned a learner mentor who will help to identify your learning needs and establish a corresponding learning and career pathway plan. Throughout your course you will have the support and guidance of your teacher and learner mentor.

This approach also allows you to choose where, how and how often you undertake your study through our flexible study options. These can include:

- on-campus attendance
- day, evening or weekend classes
- part-time study
- online learning
- blended learning (a combination of on-campus and online study)
- workplace delivery
- consolidated blocks (intensive workshops with individual learning and assessment between sessions).

The framework also takes into consideration prior learning, existing skills and life experiences, which may accelerate your training or mean you could already be eligible for a formal qualification.



# Pathways from diploma to degree

Swinburne offers pathways that make it easy to move between vocational learning and a degree. Whether you have completed a diploma at Swinburne or another institution, a range of pathway options are in place to help you enter the right course at the appropriate level.

The Guaranteed Entry Scheme and Pathways Direct programs allow eligible Swinburne diploma and advanced diploma students to enter a degree in a related discipline and receive credit for their previous studies.

## Guaranteed Entry Scheme

The Guaranteed Entry Scheme gives Swinburne diploma and advanced diploma students a guaranteed place in a Swinburne undergraduate degree. You will receive credit for your studies, fast-tracking you into later stages of the degree. You can take up your offer after you complete your diploma, or you can defer your offer to pursue other career or life goals.

Depending on the diploma you complete, you can choose from a range of undergraduate degrees. Visit [www.swinburne.edu.au/ges](http://www.swinburne.edu.au/ges) for a full listing of the available degrees.

## Pathways Direct

If the degree you're interested in is not available through the Guaranteed Entry Scheme, you could consider Pathways Direct. Through Pathways Direct, diploma and advanced diploma students at Swinburne can apply direct for admission into a Swinburne degree. Preference is given to those with a credit average (65 per cent or above) and no fails in their final year of study. The level of credit granted depends on the relevance of your qualification to the degree you are enrolling in.

Visit [www.swinburne.edu.au/pathwaysdirect](http://www.swinburne.edu.au/pathwaysdirect)

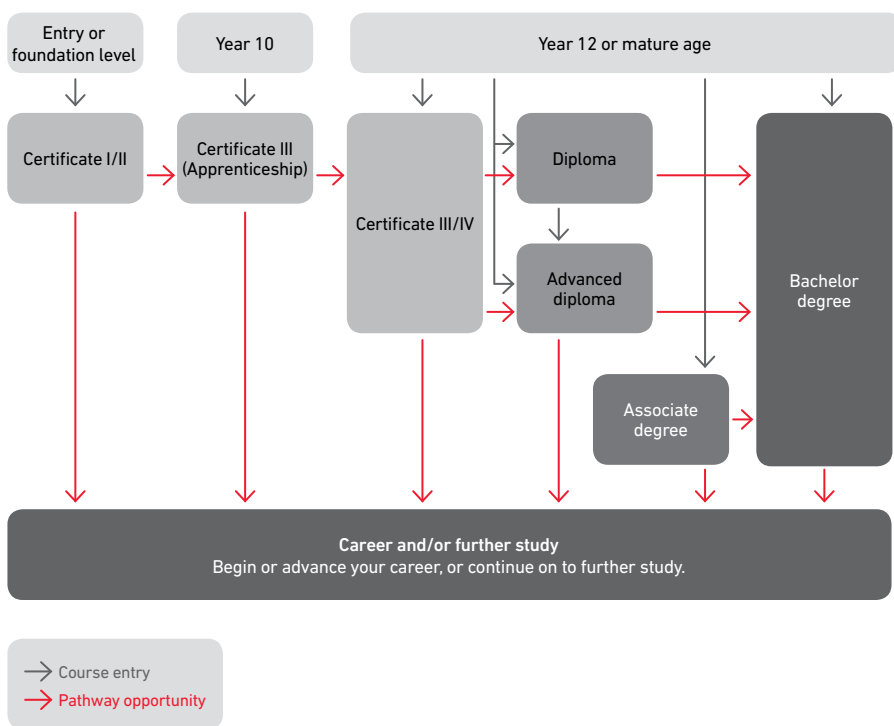
## Credit transfer

If you have been studying or completed a qualification at another Australian or international institution, you may be eligible to receive credit and enter a degree with advanced standing. To find out if your previous study is eligible for credit transfer in the degree of your choice, speak to an adviser on 1300 275 794.

## University study skills

To help you make a successful start to university, Swinburne offers a program in advanced study skills. The Course in Tertiary Transition Skills provides a supportive and practical small-group environment, where you can familiarise yourself with the typical skills needed to best manage the pressures and challenges of degree-level study.

The program is available for students making the transition from school to university, from a diploma or advanced diploma to a degree and students without recent study experience. You will be introduced to the independent learning skills required for university and get a taste of the environment and some hands-on skills such as referencing and research. You can undertake the program either on campus or online.



## Pathway programs

PATHWAY OPTIONS	DO I NEED TO APPLY?	HOW DO I APPLY?	WHEN WILL I RECEIVE MY HIGHER EDUCATION OFFER?	FURTHER INFORMATION
Guaranteed Entry Scheme	No	Diploma and advanced diploma students will automatically receive an offer	When you start your diploma	<a href="http://www.swinburne.edu.au/ges">www.swinburne.edu.au/ges</a>
Pathways Direct	Yes	You submit an application when you complete your diploma or advanced diploma	If your application is successful, you will receive your higher education offer when you complete your diploma	<a href="http://www.swinburne.edu.au/pathwaysdirect">www.swinburne.edu.au/pathwaysdirect</a>

# A guide to Swinburne pathways

This table is a guide only. Visit [www.swinburne.edu.au/pathways](http://www.swinburne.edu.au/pathways) for the most up-to-date information. Some conditions, including mandatory TAFE course average scores and unit pass rates, apply to Pathways Direct.

KEY			
H	Hawthorn	W	Wantirna
OL	Online	GES	Guaranteed Entry Scheme
P	Prahran	PD	Pathways Direct

DESTINATION UNIVERSITY DEGREE	CAMPUS	TAFE COURSE PATHWAY	CAMPUS	PATHWAY SCHEME	MAXIMUM UNIT EXEMPTIONS	MINIMUM TIME TO COMPLETE DEGREE
Bachelor of Business	H, OL	Advanced Diploma of Accounting	H, OL	GES	12 units	1.5 yrs
		Advanced Diploma of Legal Practice	H	GES	12 units	1.5 yrs
		Diploma of Business Administration	H, W, OL	GES	8 units	2 yrs
		Diploma of Management	H, OL	GES	8 units	2 yrs
		Diploma of Project Management	H, OL	GES	8 units	2 yrs
Bachelor of Business Information Systems	H	Diploma of Business Administration	H, W, OL	GES	8 units	2 yrs
		Diploma of Information Technology Systems Administration	H, W	PD	5 units	2.5 yrs
Bachelor of Commerce	H	Advanced Diploma of Accounting	H, OL	GES	12 units	1.5 yrs
		Advanced Diploma of International Business	H	GES	12 units	1.5 yrs
		Diploma of Human Resources Management	H, OL	GES	8 units	2 yrs
Bachelor of Communication	H & P*	Diploma of Marketing	H	GES	8 units	2 yrs
Bachelor of Design (Communication Design)	P*	Diploma of Graphic Design	P*, W	GES	8 units	2 yrs
		Certificate IV in Design (with enhancement program)	P*, W	PD	8 units	2 yrs
Bachelor of Design (Interior Design)	P*	Certificate IV in Design (with enhancement program)	P*, W	PD	8 units	2 yrs
Bachelor of Engineering (Civil Engineering)	H	Advanced Diploma of Engineering Technology – Civil Engineering stream	H	PD	12 units	2.5 yrs
Bachelor of Engineering (Electrical and Electronic Engineering)	H	Advanced Diploma of Electronics and Communications Engineering	H	PD	10 units	3 yrs
Bachelor of Engineering (Product Design Engineering)	H	Advanced Diploma of Engineering Technology – Mechanical Engineering stream	H	PD	9 units	3 yrs
Bachelor of Engineering (Robotics and Mechatronics)	H	Advanced Diploma of Engineering Technology – Robotics and Mechatronics stream	H	PD	12 units	2.5 yrs
Bachelor of Film and Television	P*	Advanced Diploma of Screen and Media – Digital Film and Television stream	P*	PD	16 units	1 yr
Bachelor of Information and Communication Technology	H	Advanced Diploma of Computer Systems Technology	H	GES	12 units	2 yrs
		Diploma of Information Technology Systems Administration	H, W	PD	9 units	2 yrs
Bachelor of Information and Communication Technology (Network Design and Security)	H	Diploma of Information Technology Networking	H, W	PD	8 units	2 yrs
Bachelor of Science	H	Diploma of Conservation and Land Management	W	GES	8 units	2 yrs
Bachelor of Science (Computer Science)	H	Diploma of Software Development	H, W	PD	12 units	2.5 yrs
Bachelor of Science (Professional Software Development)	H	Diploma of Software Development	H, W	PD	8 units	2.5 yrs
Bachelor of Social Science	H, OL	Diploma of Children's Services (Early Childhood Education and Care)	W	GES	8 units	2 yrs
		Diploma of Nursing (Enrolled/Division 2 Nursing)	W	GES	8 units	2 yrs

\*After 2013, teaching of this course will continue at the Hawthorn campus.

# Course fees

## Certificate, diploma and advanced diploma courses

Certificate, diploma and advanced diploma fees are made up of:

- tuition fee
- amenities fee of up to \$209 per calendar year
- materials fee (some courses require you to purchase materials which you then own – your school will advise if materials are required)
- ancillary fee (some courses have additional costs for excursions or club memberships – your school will advise if these apply).

This information relates to government-subsidised places. To be eligible for a government-subsidised place in 2013 you must meet the citizenship requirements and, depending on your age, the prior qualification requirement. Visit [www.swinburne.edu.au/fees](http://www.swinburne.edu.au/fees) to find out more information on citizenship requirements and eligibility for a government-subsidised place.

### Concessions

To be eligible for concessions, you must hold a current Health Care Card (HCC), Pensioner Concession Card (PCC) or Veterans Gold Card, or be a dependent spouse or child of such a cardholder.

A current HCC or letter of eligibility for a HCC from Centrelink must be shown at the time of enrolment to receive a concession.

### Certificate I to IV

A valid concession card holder will be eligible to pay tuition fees up to the concession maximum fee specified for the relevant course category and the concession rate of the amenities fee.

### Youth concession

Concessions are available for students aged under 25 years who hold a valid concession card and have a government-subsidised place in a diploma or advanced diploma. Eligible students will pay a maximum of \$100 per year for their tuition fees. The concession rate of the amenities fee applies.

HCC, PCC and Veterans Gold Card holders may also be eligible for a concession on their amenities fee.

### VET FEE-HELP (diploma and advanced diploma only)

VET FEE-HELP is a Commonwealth Government loan scheme through which you can defer the payment of your tuition fees. When your income reaches a certain repayment threshold the debt is repaid through the tax system. A loan fee of 20 per cent applies to VET FEE-HELP loans, except for those students who are eligible for a funded place. VET FEE-HELP does not cover the loan fee, any amenities or materials fees, accommodation or living expenses.

Visit [www.deewr.gov.au/vetfeehelp](http://www.deewr.gov.au/vetfeehelp)

### Full-fee places

If you do not meet the eligibility criteria for a government subsidised place, there are full-fee paying places available. Go to [www.swinburne.edu.au/fees](http://www.swinburne.edu.au/fees) for a list of the indicative fees for full-fee paying places.

## TAFE tuition fees for students eligible for a government-subsidised place\*#

QUALIFICATION/TUITION STRUCTURE	FEE PER STUDENT CONTACT HOUR	MINIMUM FEE	MAXIMUM FEE (FULL YEAR ENROLMENT)
Foundation Skills	\$1.08	Up to \$50	\$500
Traineeships	\$2.17	Up to \$187	\$1250
Apprenticeships	\$2.17	Up to \$187	\$1250
Certificate I and II	\$1.62	Up to \$105	\$875
Certificate III and IV	\$2.17	Up to \$187	\$1250
Diploma and advanced diploma	\$4.33	Up to \$100**	\$2500

\* Your tuition fee is calculated according to the number of hours you are enrolling in, multiplied by the hourly charge, and is dependent on your eligibility for a funded place.

# Fees listed are current in 2012. Please refer to [www.swinburne.edu.au/fees](http://www.swinburne.edu.au/fees) for 2013 fee information (available from November 2012).

\*\* Concession only applies to students under 25 years of age as at 1 January 2012 with a valid Health Care Card.

## Degrees and associate degrees

When you commence study in a Commonwealth supported place (CSP), you must contribute towards the cost of your tuition. The amount you pay depends on which units you study and the payment method you choose.

### Student contribution amounts and rules

To be eligible for a Commonwealth supported place you must be an Australian citizen, a New Zealand citizen or the holder of an Australian Permanent Resident Visa.

The student contribution is calculated based on the units of study that you enrol in. Each unit is assigned to a 'band' according to the subject area it comes from. The band tells us how much to charge for one Effective Full Time Student Load (EFTSL), equivalent to 100 credit points at Swinburne.

Most higher education units at Swinburne are 12.5 credit points (0.125 EFTSL), so to calculate the cost of a unit we multiply the contribution amount for that designated band by 0.125.

For example, the student contribution amount for a 12.5 credit point engineering unit of study would be  $\$8050 \times 0.125 = \$1006.25$ .

A typical three-year degree is made up of 24 units.

## HECS-HELP

You may prefer to defer your student contribution by taking out a HECS-HELP loan. HECS-HELP is available to eligible students enrolled in a Commonwealth supported place. This loan can cover all or part of the student contribution amount. You are eligible for HECS-HELP if you are a Commonwealth supported student and an Australian citizen or the holder of a permanent humanitarian visa.

Under this option, the Commonwealth Government pays the loan amount directly to Swinburne. Then, when your salary reaches the minimum repayment threshold you will make compulsory repayments through the tax system.

Visit [www.studyassist.gov.au](http://www.studyassist.gov.au)

## Other expenses

As well as tuition fees, all students pay a student services and amenities fee. In 2012, the fee is \$263 for a full-time student. Students who are unable to pay the fee up-front can defer all or part of the fee through an element of the Higher Education Loan Payment known as SA-HELP. The fee contributes to funding student services such as sport and recreation, childcare, counselling, legal and health services.

You will also need to cover resource costs such as textbooks, materials, art supplies or software. To minimise these costs you can choose to buy second-hand textbooks or you can access them through one of Swinburne's libraries.

Accommodation and general living expenses will also vary depending on your chosen living arrangements.



## 2012 student contribution by band

STUDENT CONTRIBUTION BAND*	2012 STUDENT CONTRIBUTION (PER EFTSL OR 100 CREDIT POINTS)**
<b>Band 3</b> Accounting, administration, commerce, dentistry, economics, law, medicine, veterinary science	\$9425
<b>Band 2</b> Agriculture, allied health, built environment, computing, engineering, other health, science, surveying	\$8050
<b>Band 1</b> Behavioural science, clinical psychology, education, foreign languages, humanities, social studies, visual and performing arts	\$5648
<b>National priorities</b> Mathematics, statistics, science	\$4520

\* Individual units in a course can be classified in different bands. For example, a Bachelor of Design course may require some units that are classified as 'computing' (Band 2) and some as 'visual and performing arts' (Band 1).

\*\* Fees are reviewed each year by the Commonwealth Government and may increase.

Note: This table is a guide only. Visit [www.studyassist.gov.au](http://www.studyassist.gov.au) for up-to-date student contribution bands.

# Scholarships

A wide range of scholarships are available for high-achieving students, and for students who would not otherwise be able to access tertiary education. The scholarships in the following table are available to new enrolling students. Visit [www.swinburne.edu.au/scholarships](http://www.swinburne.edu.au/scholarships) for full details and eligibility/selection criteria.

SCHOLARSHIP NAME	ELIGIBILITY*	VALUE*
<b>VICE-CHANCELLOR'S SCHOLARSHIPS</b>		
Arts and Social Sciences	ATAR of at least 95.00	Tuition fee waiver
Business and Commerce	ATAR of at least 95.00	Tuition fee waiver
Design	ATAR of at least 95.00	Tuition fee waiver
Engineering	ATAR of at least 95.00	Tuition fee waiver
Information Technology/Science	ATAR of at least 95.00	Tuition fee waiver
<b>FACULTY-SPECIFIC SCHOLARSHIPS</b>		
Bachelor of Information Technology – Scholarship Program	Based on academic results and interview	Approx. \$40,000
Dean's Commerce Scholars Program, Faculty of Business and Enterprise	ATAR of at least 85.00	Up to \$1800 per year
Dean's Scholarship, Faculty of Higher Education	ATAR of at least 89.00	Tuition fee waiver
Dean's Scholarship, Faculty of Life and Social Sciences	ATAR of at least 95.00	Tuition fee waiver
John Bowring (ACS) Memorial Scholarship	Enrolling in the Bachelor of Film and Television and able to demonstrate financial hardship	\$3000 for course materials
Sir Reginald Ansett Scholarship – Business	Enrolling in a commerce degree and able to demonstrate financial hardship	\$4500
Sir Reginald Ansett Scholarship – Aviation	ATAR of at least 85.00, enrolling in an aviation degree and able to demonstrate financial hardship	\$10,000 per year for three years
<b>UNIVERSITY-WIDE SCHOLARSHIPS</b>		
George Alexander Foundation Scholarship	ATAR of at least 80.00 and having to live away from home to undertake their degree	\$7500 per year for three years
Kath Watson Scholarship for Women	Female enrolling in a full-time undergraduate degree, or Certificate IV or above, and able to demonstrate financial hardship	\$2000 per year for up to five years
Residential Scholarships – Hawthorn	Commencing full-time student residing at the Hawthorn campus Residential College. Based on academic merit, community service and demonstrated leadership skills and financial hardship	\$2000
<b>EQUITY SCHOLARSHIPS</b>		
Equity Scholarship for Refugee or Asylum Seeker	Asylum seeker status and commencing a full-time undergraduate program	\$3000
Rural and Regional Equity Scholarships (for first-year undergraduates)	Have to relocate from a rural or regional area and able to demonstrate financial need	\$3000
TAFE Pathways Equity Scholarship	Completed a TAFE qualification as a pathway to an undergraduate degree and able to demonstrate financial need	\$3000
<b>COMMONWEALTH SCHOLARSHIPS</b>		
Indigenous Access Scholarships (IAS)	Indigenous Australian or Torres Strait Islander, enrolling in a full-time undergraduate degree and able to demonstrate financial need	\$4485
Indigenous Commonwealth Accommodation Scholarships (I-CAS)	Indigenous Australian or Torres Strait Islander, relocating to study a full-time undergraduate degree and able to demonstrate financial need	\$2377 per semester
Indigenous Commonwealth Education Costs Scholarships (I-CECS)	Indigenous Australian or Torres Strait Islander, enrolling in a full-time undergraduate degree and able to demonstrate financial need	\$1188 per semester

\*The eligibility requirements and values are for 2012 enrolling students and may change for 2013.



# How to apply

Applications can be made direct to Swinburne or through the Victorian Tertiary Admissions Centre (VTAC), depending on your course, when you want to commence and your preferred application method.

## Direct applications

Direct applications can be accepted for all intakes. Applying directly offers more certainty and less stress for those applying for highly competitive courses.

Visit [www.swinburne.edu.au/apply](http://www.swinburne.edu.au/apply) to download the application form or apply online.

## VTAC applications

VTAC applications are accepted for Semester 1 and should be submitted electronically via the VTAC website. Application fees apply.

Visit [www.vtac.edu.au](http://www.vtac.edu.au)

The application period opens in August and closes in the last week of September. Late applications will be accepted by VTAC until mid December, but some programs that have special requirements will not accept late applications.

The VTAC system allows you to preference up to 12 courses in your application.

## Change of Preference

You can change your original VTAC application course preferences during the Change of Preference period in December.

See the current VTAC Guide or [www.vtac.edu.au](http://www.vtac.edu.au) for exact dates and details.

## Apprenticeships and traineeships applications

To apply for an apprenticeship or traineeship you must first find an employer who will take you on as an apprentice or trainee and arrange your training agreement. Visit [www.swinburne.edu.au/apprenticeships](http://www.swinburne.edu.au/apprenticeships)

## Special Entry Access Scheme

Swinburne participates in the Special Entry Access Scheme (SEAS) for VTAC applicants who have been unable to reach their full educational potential or who have restricted access to the course of their choice because of their life circumstances.

Visit [www.swinburne.edu.au/seas](http://www.swinburne.edu.au/seas)

## Deferring

Once you have accepted your offer you can apply to defer your studies for up to two years.

Visit [www.swinburne.edu.au/deferment](http://www.swinburne.edu.au/deferment)

## Non-Year 12 applicants

As a non-Year 12 student your application will be considered on a broad range of factors, including previous studies, work experience and any extra requirements specified for the course.

For entry into an undergraduate degree, at least one of the following must be completed:

- Year 12
- Certificate IV, diploma or advanced diploma
- associate degree.

Particular degrees may also require you to sit a Special Tertiary Admissions Test.

Visit [www.swinburne.edu.au/stat](http://www.swinburne.edu.au/stat)

Entry requirements for certificates, diplomas, advanced diplomas and associate degrees are listed in this guide.

## Application methods

	SEMESTER 1/ FEBRUARY INTAKE	OTHER INTAKES
Bachelor degree	Direct application or VTAC	Direct application
Associate degree	Direct application or VTAC	Direct application
Certificate IV, diploma, advanced diploma (full-time)	Direct application or VTAC	Direct application
Certificate IV, diploma, advanced diploma (part-time)	Direct application	Direct application
Certificate III and below	Direct application	Direct application
Apprenticeships and traineeships	Find a job and register*	Find a job and register*

\*Visit [www.swinburne.edu.au/apprenticeships](http://www.swinburne.edu.au/apprenticeships) for details.

Note: Some courses require supplementary application forms or have special application requirements.

## International students

International students (including Temporary or Provisional Residents and holders of Temporary Protection Visas) applying to study at a Swinburne campus in Australia should contact Swinburne International.

1800 897 973 (within Australia)  
[international@swinburne.edu.au](mailto:international@swinburne.edu.au)  
[www.swinburne.edu.au/international](http://www.swinburne.edu.au/international)



# Course information

For detailed course information visit [www.swinburne.edu.au/courses](http://www.swinburne.edu.au/courses)

## Key

### ATAR

n/a	Data not available
New	New course
RC	Range of criteria

### Prerequisites

MATH	Mathematics
MATH METH	Mathematical Methods
SPEC MATH	Specialist Mathematics

### Campuses

C	Croydon
EV	External Venue
H	Hawthorn
OL	Online
P	Prahran
W	Wantirna

### Duration

Courses are full-time or part-time in years, unless specified as months, weeks or hours.

m	Months
w	Weeks
h	Hours
F	Full-time
P	Part-time

### Apply

V	VTAC
D	Direct

# Arts and Social Sciences

Studying humanities is a great choice if you are interested in discovering why different things drive different people, learning about human interaction and behaviour, or exploring the connections between social science and communication. Whether through literature, politics, health or housing, you'll examine people and their environments, and gain the research, analytical and communication skills to build a career.

STUDY AREA	COURSE	ATAR	PREREQUISITES	CAMPUS	DURATION	APPLY
<b>DEGREES</b>						
<b>Arts</b>	Bachelor of Arts	60.30	30 in English (ESL) or 25 in English (any other)	H	3F 6P	D or V
<b>Criminology and forensic science</b>	Bachelor of Social Science (Criminology and Forensic Science)	New	30 in English (ESL) or 25 in English (any other)	OL	3F 6P	D or V
<b>Security and counter terrorism</b>	Bachelor of Social Science (Security and Counter Terrorism)	New	30 in English (ESL) or 25 in English (any other)	OL	3F 6P	D or V
<b>Social science</b>	Bachelor of Social Science	60.30	30 in English (ESL) or 25 in English (any other)	H	3F 6P	D or V
	Bachelor of Social Science (ex-Lilydale)	51.75	30 in English (ESL) or 25 in English (any other)	H	3F 6P	D or V
<b>Sociology</b>	Bachelor of Social Science (Sociology)	n/a	30 in English (ESL) or 25 in English (any other)	H	3F 6P	D or V
<b>Scholarships</b>	Dean's Scholarship – Faculty of Higher Education	–	Minimum ATAR of 89.00	H	Varies	D or V
	Dean's Scholarship – Faculty of Life and Social Sciences	–	Minimum ATAR of 95.00	H	Varies	D or V
	Vice-Chancellor's Arts and Social Sciences Scholarship	–	Minimum ATAR of 95.00	H	Varies	D or V
<b>DIPLOMAS AND CERTIFICATES</b>						
<b>Liberal Arts</b>	Certificate IV in Liberal Arts	RC	VCE or mature age	W	1F 2P	D or V
<b>Library/Information services</b>	Diploma of Library/Information Services incorporating Certificate IV/III in Library/Information Services	RC	VCE or mature age	P*, OL	1.5F 3P	D or V

\*After 2013, teaching of this course will continue at the Hawthorn campus.



“ My course provides me with flexibility – there is an amazing range of subjects, which means I can learn about more than just one area of study. I’ve decided to major in digital media and I’m gaining additional skills and knowledge through my Industry-Based Learning placement. ”

Adila  
Bachelor of Arts

# Aviation

Aviation is an evolving industry at the forefront of technology and business. Whether you're interested in flying or the management side of aviation, we offer courses that pave the way to a successful career.

Swinburne is the only university in Victoria offering degree-level flying courses. Commercial flying training is conducted at Oxford Aviation Academy (OAA). Swinburne has been delivering the world-class Qantas Cadet Pilot Program since 2008 and the Jetstar Cadet Program since 2010.

Every two years eligible undergraduate students can participate in the aviation international study tour.

The Bachelor of Aviation (Honours) program is an additional (fourth) year following the Bachelor of Aviation or Bachelor of Aviation (Management) degrees.

STUDY AREA	COURSE	ATAR	PREREQUISITES	CAMPUS	DURATION	APPLY
<b>DEGREES</b>						
<b>Aviation</b>	Bachelor of Aviation	RC	30 in English (ESL) or 25 in English (any other), and 20 in MATH METH	H and EV	3F 6P	D or V
	Bachelor of Aviation/Bachelor of Commerce	RC	30 in English (ESL) or 25 in English (any other), and 20 in MATH METH	H and EV	4F 8P	D or V
<b>Aviation management</b>	Bachelor of Aviation (Management)	69.30	30 in English (ESL) or 25 in English (any other), and 20 in MATH (any)	H	3F 6P	D or V
	Bachelor of Aviation (Management)/Bachelor of Commerce	69.30	30 in English (ESL) or 25 in English (any other), and 20 in MATH (any)	H	4F 8P	D or V

# Business, Commerce and Management

Studying a business-related degree will give you skills and knowledge that can be applied in any industry, anywhere in the world. Courses in these disciplines are also ideal if you're looking to start your own business, sharpen existing knowledge or upgrade your skill set to move into a more senior position.

A Bachelor of Commerce (Honours) is available to all graduates of business and commerce degrees at Swinburne.

STUDY AREA	COURSE	ATAR	PREREQUISITES	CAMPUS	DURATION	APPLY
<b>DEGREES</b>						
<b>Accounting</b>	Bachelor of Business (Accounting)	51.40	30 in English (ESL) or 25 in English (any other)	H	3F 6P	D or V
	Bachelor of Business (Accounting)	New	30 in English (ESL) or 25 in English (any other)	OL	3F 6P	D or V
	Bachelor of Commerce (Accounting)	68.30	30 in English (ESL) or 25 in English (any other)	H	3F 6P	D or V
	Bachelor of Commerce (Accounting and Finance)	69.60	30 in English (ESL) or 25 in English (any other)	H	3F 6P	D or V
<b>Advertising</b>	Bachelor of Business (Advertising)	n/a	30 in English (ESL) or 25 in English (any other)	H	3F 6P	D or V
<b>Business administration</b>	Bachelor of Business Administration	50.45	30 in English (ESL) or 25 in English (any other)	H, P*, W	3F 6P	D or V
	Bachelor of Business (Business Administration)	New	30 in English (ESL) or 25 in English (any other)	OL	3F 6P	D or V
	Associate Degree of Business Administration	New	30 in English (ESL) or 20 in English (any other)	H, W	2F	D or V
<b>Business analysis</b>	Bachelor of Business (Business Analysis)	n/a	30 in English (ESL) or 25 in English (any other)	H	3F 6P	D or V
<b>Business and commerce</b>	Bachelor of Business	50.00	30 in English (ESL) or 25 in English (any other)	H	3F 6P	D or V
	Bachelor of Business/Bachelor of Communication	n/a	30 in English (ESL) or 25 in English (any other)	H and P*	4F 8P	D or V
	Bachelor of Business/Bachelor of Professional Communication	n/a	30 in English (ESL) or 25 in English (any other)	H	4F 8P	D or V
	Bachelor of Business/Bachelor of Social Science	62.80	30 in English (ESL) or 25 in English (any other)	H	4F 8P	D or V
	Bachelor of Commerce	65.40	30 in English (ESL) or 25 in English (any other)	H	3F 6P	D or V
<b>Commercial law</b>	Bachelor of Commerce (Commercial Law)	72.55	30 in English (ESL) or 25 in English (any other)	H	3F 6P	D or V
<b>Entrepreneurship and innovation</b>	Bachelor of Commerce (Entrepreneurship and Innovation)	72.70	30 in English (ESL) or 25 in English (any other)	H	3F 6P	D or V
<b>Finance</b>	Bachelor of Business (Finance)	n/a	30 in English (ESL) or 25 in English (any other)	H	3F 6P	D or V
	Bachelor of Commerce (Finance)	68.45	30 in English (ESL) or 25 in English (any other)	H	3F 6P	D or V
<b>Human resources</b>	Bachelor of Business (Human Resource Management)	50.30	30 in English (ESL) or 25 in English (any other)	H	3F 6P	D or V
	Bachelor of Commerce (Human Resource Management)	69.20	30 in English (ESL) or 25 in English (any other)	H	3F 6P	D or V
<b>International business</b>	Bachelor of Commerce (International Business)	71.30	30 in English (ESL) or 25 in English (any other)	H	3F 6P	D or V
<b>Languages</b>	Bachelor of Commerce (Italian)	70.95	30 in English (ESL) or 25 in English (any other)	H	3F 6P	D or V
	Bachelor of Commerce/Bachelor of Arts (Italian)	70.95	30 in English (ESL) or 25 in English (any other)	H	4F 8P	D or V

\*After 2013, teaching of this course will continue at the Hawthorn campus.



“ This course has given me the confidence to turn my ideas into opportunities. It offers a broad range of units and there are lots of industry-based activities to get involved in. Everyone at Swinburne is approachable and supportive, and I love that the lecturers are mentors as well as teachers. ”

**Harrison**  
Bachelor of Commerce



STUDY AREA	COURSE	ATAR	PREREQUISITES	CAMPUS	DURATION	APPLY
<b>DEGREES (CONTINUED)</b>						
<b>Languages (continued)</b>	Bachelor of Commerce (Japanese)	71.45	30 in English (ESL) or 25 in English (any other)	H	3F 6P	D or V
	Bachelor of Commerce/Bachelor of Arts (Japanese)	71.45	30 in English (ESL) or 25 in English (any other)	H	4F 8P	D or V
<b>Logistics</b>	Bachelor of Business (Logistics and Supply Chain Management)	New	30 in English (ESL) or 25 in English (any other)	OL	3F 6P	D or V
<b>Management</b>	Bachelor of Business (Management)	n/a	30 in English (ESL) or 25 in English (any other)	H	3F 6P	D or V
	Bachelor of Commerce (Management)	n/a	30 in English (ESL) or 25 in English (any other)	H	3F 6P	D or V
	Associate Degree of Applied Management	New	30 in English (ESL) or 20 in English (any other)	H and W	2F	D or V
<b>Marketing</b>	Bachelor of Business (Marketing)	50.00	30 in English (ESL) or 25 in English (any other)	H	3F 6P	D or V
	Bachelor of Business (Marketing)	New	30 in English (ESL) or 25 in English (any other)	OL	3F 6P	D or V
	Bachelor of Commerce (Marketing)	70.10	30 in English (ESL) or 25 in English (any other)	H	3F 6P	D or V
<b>Public relations</b>	Bachelor of Business (Public Relations)	n/a	30 in English (ESL) or 25 in English (any other)	H	3F 6P	D or V
	Bachelor of Business (Public Relations)	New	30 in English (ESL) or 25 in English (any other)	OL	3F 6P	D or V
<b>Sports management</b>	Bachelor of Business (Sports Management)	New	30 in English (ESL) or 25 in English (any other)	OL	3F 6P	D or V
<b>Tourism and hospitality management</b>	Bachelor of Business (Tourism and Hospitality Management)	n/a	Advanced Diploma of Hospitality Management or equivalent	H	1.5F 3P	D or V
	Bachelor of Business (Tourism Management)	n/a	30 in English (ESL) or 25 in English (any other)	H, OL	3F 6P	D or V
<b>Scholarships</b>	Dean's Commerce Scholars' Program	–	Minimum ATAR of 85.00	H	Varies	D or V
	Dean's Scholarship – Faculty of Higher Education	–	Minimum ATAR of 89.00	H	Varies	D or V
	Vice-Chancellor's Scholarship – Business and Commerce	–	Minimum ATAR of 95.00	H	Varies	D or V
<b>DIPLOMAS AND CERTIFICATES</b>						
<b>Accounting</b>	Advanced Diploma of Accounting incorporating Diploma of Accounting and Certificate IV in Accounting	RC	VCE or mature age	H, OL	1.5F 3P	D or V
<b>Bookkeeping</b>	Certificate IV in Bookkeeping	RC	VCE or mature age	H, W, OL	6mF 1P	D
<b>Business administration</b>	Diploma of Business Administration incorporating Certificate IV/III in Business Administration	RC	VCE or mature age	H, W, OL	1.5F 3P	D or V
<b>Event management</b>	Advanced Diploma of Events incorporating Diploma of Events and Certificate III in Events	RC	VCE or mature age	P*	2F	D or V
<b>Human resources</b>	Diploma of Human Resources Management	RC	Relevant experience or qualification	H, OL	6mF 1P	D or V
	Certificate IV in Human Resources	RC	VCE or mature age	H, OL	6mF 1P	D or V
<b>International business</b>	Advanced Diploma of International Business incorporating Diploma of International Business and Certificate IV in International Trade	RC	VCE or mature age	H	1.5F	D or V
	Diploma of International Business	RC	Relevant experience	H	8mP	D
<b>Legal practice</b>	Advanced Diploma of Legal Practice	RC	VCE or mature age	H	2F	D or V
<b>Management</b>	Diploma of Management	RC	VCE or mature age	H, OL	1F 2P	D or V
	Certificate IV in Frontline Management	RC	VCE or mature age	H, OL	6mF 1P	D or V
<b>Marketing</b>	Advanced Diploma of Marketing incorporating Diploma of Marketing and Certificate IV in Marketing	RC	VCE or mature age	H	1.5F	D or V
	Diploma of Marketing	RC	Relevant experience	H	8mP	D
<b>Medical administration</b>	Certificate III in Business Administration (Medical)	RC	None	W	6mF 1P	D
<b>Project management</b>	Diploma of Project Management	RC	Mature age with relevant experience	H, OL	1P	D
	Certificate IV in Project Management	RC	Mature age working in industry	OL	6mP	D
<b>Public relations</b>	Advanced Diploma of Business (Public Relations) incorporating Diploma of Business (Public Relations)	RC	VCE or mature age	P*	2F 4P	D or V
<b>Real estate</b>	Certificate IV in Property Services (Real Estate)	RC	Course in Real Estate Agents' Representative	P*, W, OL	5mP	D
<b>Retail management</b>	Diploma of Retail Management incorporating Certificate IV in Retail Management and Certificate III in Retail	RC	VCE or mature age	P* and WP	2F 4P	D or V

\*After 2013, teaching of this course will continue at the Hawthorn campus.

# Design

Swinburne's prestigious design courses let you combine imagination and innovation with smart business sense. You'll learn how to harness your natural creativity and apply it in industry.

Industry Placement is open to students studying a three-year bachelor degree in design or film. The program is a paid 24- or 48-week placement in a design firm, a creative industries enterprise, a business setting, or the design or media department of a public service organisation. Acceptance into the placement includes acceptance into the honours program. Visit [www.swinburne.edu.au/design/ip](http://www.swinburne.edu.au/design/ip) for more information.

STUDY AREA	COURSE	ATAR	PREREQUISITES	CAMPUS	DURATION	APPLY
<b>DEGREES</b>						
<b>Communication design</b>	Bachelor of Design (Communication Design)	70.15	30 in English (ESL) or 25 in English (any other), and 20 in one of Visual Communication and Design, Studio Arts or Product Design and Technology	P*	3F 6P	D or V
	Bachelor of Design (Communication Design)/Bachelor of Business	65.25	30 in English (ESL) or 25 in English (any other), and 20 in one of Visual Communication and Design, Studio Arts or Product Design and Technology	P and H*	4F 8P	D or V
<b>Digital media design</b>	Bachelor of Design (Digital Media Design)	66.55	30 in English (ESL) or 25 in English (any other), and 20 in one of Visual Communication and Design, Studio Arts or Product Design and Technology	P*	3F 6P	D or V
	Bachelor of Design (Digital Media Design)/Bachelor of Business	65.25	30 in English (ESL) or 25 in English (any other), and 20 in one of Visual Communication and Design, Studio Arts or Product Design and Technology	P and H*	4F 8P	D or V
<b>Graphic design</b>	Associate Degree of Applied Graphic Design	New	30 in English (ESL) or 20 in English (any)	P*, W	2F	D or V
<b>Industrial design</b>	Bachelor of Design (Industrial Design)	65.15	30 in English (ESL) or 25 in English (any other), and 20 in one of Visual Communication and Design, Studio Arts or Product Design and Technology	P*	3F 6P	D or V
	Bachelor of Design (Industrial Design)/Bachelor of Business	65.25	30 in English (ESL) or 25 in English (any other), and 20 in one of Visual Communication and Design, Studio Arts or Product Design and Technology	P and H*	4F 8P	D or V
<b>Interior design</b>	Bachelor of Design (Interior Design)	65.10	30 in English (ESL) or 25 in English (any other), and 20 in one of Visual Communication and Design, Studio Arts or Product Design and Technology	P*	3F 6P	D or V
	Bachelor of Design (Interior Design)/Bachelor of Business	65.25	30 in English (ESL) or 25 in English (any other), and 20 in one of Visual Communication and Design, Studio Arts or Product Design and Technology	P and H*	4F 8P	D or V
<b>Scholarships</b>	Vice-Chancellor's Scholarship – Design	–	Minimum ATAR of 95.00	P*	Varies	D or V
<b>DIPLOMAS AND CERTIFICATES</b>						
<b>Design</b>	Certificate IV in Design	RC	VCE or mature age plus folio and interview	P*, W	1F	D or V
<b>Graphic design</b>	Diploma of Graphic Design	RC	VCE or mature age plus folio and interview	P*, W	1F	D or V
<b>Interior design</b>	Diploma of Interior Design and Decoration	RC	VCE or mature age plus folio and interview	P*	1.5F	D or V
<b>Visual merchandising</b>	Diploma of Visual Merchandising	RC	VCE plus folio and interview	P*, W	2F	D or V

\*After 2013, teaching of this course will continue at the Hawthorn campus.

# Digital Media

The all-embracing move towards more sophisticated communication techniques is opening doors for emerging new-media experts.

STUDY AREA	COURSE	ATAR	PREREQUISITES	CAMPUS	DURATION	APPLY
<b>DEGREES</b>						
<b>Digital media and marketing</b>	Bachelor of Arts (Digital Media and Marketing)	67.50	30 in English (ESL) or 25 in English (any other)	H	3F 6P	D or V
<b>Games and interactivity</b>	Bachelor of Arts (Games and Interactivity)	65.80	30 in English (ESL) or 25 in English (any other)	H	3F 6P	D or V
	Bachelor of Arts (Games and Interactivity)/Bachelor of Science (Computer Science and Software Engineering)	75.35	30 in English (ESL) or 25 in English (any other), and 25 in MATH METH or SPEC MATH	H	4F 8P	D or V
<b>Interactive digital media</b>	Associate Degree of Interactive Digital Media	New	30 in English (ESL) or 20 in English (any other)	H, P*	2F 4P	D or V
<b>Scholarships</b>	Dean's Scholarship – Faculty of Life and Social Sciences	–	Minimum ATAR of 95.00	H	Varies	D or V
	Vice-Chancellor's Scholarship – Design	–	Minimum ATAR of 95.00	P*	Varies	D or V
<b>DIPLOMAS AND CERTIFICATES</b>						
<b>Digital and interactive games</b>	Diploma of Digital and Interactive Games	RC	Relevant experience or qualification	H	1F	D or V
	Certificate IV in Digital and Interactive Games	RC	None	H	1F	D
<b>Digital media technology</b>	Diploma of Digital Media Technologies	RC	Relevant experience or qualification	H, W	1F	D or V
	Certificate IV in Digital Media Technologies	RC	None	H, W	1F	D or V
<b>Interactive digital media</b>	Diploma of Interactive Digital Media	RC	VCE or mature age plus folio and interview	P*, W	1F	D and V

\*After 2013, teaching of this course will continue at the Hawthorn campus.

# Engineering

Across Australia and the world, businesses are seeking employees with the knowledge and skills to design, build and maintain innovative products. Next-generation computers and tablets, smartphones, low-emission cars, biomechanical limbs and industrial robots are just some of the products created by engineers. As an engineering graduate, you'll be recognised for your ability to turn today's problems into tomorrow's solutions.

In 2010, our students placed second in the Formula SAE competition, which involved designing, building and racing a formula race car against other university teams. Travelling to Japan in 2011, team Swinburne placed fourth overall and were named the best rookie team.

In 2011, six of our students developed the world's fastest two-handed Rubik's Cube-solving robot. Named Ruby, the robot can solve the scrambled puzzle in just 10.69 seconds.

STUDY AREA	COURSE	ATAR	PREREQUISITES	CAMPUS	DURATION	APPLY
<b>DEGREES</b>						
<b>Biomedical</b>	Bachelor of Engineering (Biomedical Engineering)	74.25	30 in English (ESL) or 25 in English (any other), and 20 in MATH METH	H	4F 8P	D or V
	Bachelor of Engineering (Electronics and Computer Systems)/ Bachelor of Science (Biomedical Sciences)	n/a	30 in English (ESL) or 25 in English (any other), and 20 in MATH METH	H	5F 10P	D or V
<b>Civil engineering</b>	Bachelor of Engineering (Civil Engineering)	77.10	30 in English (ESL) or 25 in English (any other), and 20 in MATH METH	H	4F 8P	D or V
	Bachelor of Engineering (Civil Engineering)/Bachelor of Commerce	77.10	30 in English (ESL) or 25 in English (any other), and 20 in MATH METH	H	5F 10P	D or V
<b>Electrical and electronic engineering</b>	Bachelor of Engineering (Electrical and Electronic Engineering)	74.90	30 in English (ESL) or 25 in English (any other), and 20 in MATH METH	H	4F 8P	D or V
	Bachelor of Engineering (Electrical and Electronic Engineering)/Bachelor of Commerce	74.90	30 in English (ESL) or 25 in English (any other), and 20 in MATH METH	H	5F 10P	D or V
<b>Electronics and computer systems</b>	Bachelor of Engineering (Electronics and Computer Systems)	74.90	30 in English (ESL) or 25 in English (any other), and 20 in MATH METH	H	4F 8P	D or V
	Bachelor of Engineering (Electronics and Computer Systems)/ Bachelor of Commerce	74.90	30 in English (ESL) or 25 in English (any other), and 20 in MATH METH	H	5F 10P	D or V
	Bachelor of Engineering (Electronics and Computer Systems)/ Bachelor of Science (Computer Science and Software Engineering)	74.90	30 in English (ESL) or 25 in English (any other), and 20 in MATH METH	H	5F 10P	D or V
<b>Engineering</b>	Associate Degree in Engineering	60.75	30 in English (ESL) or 20 in English (any other), and 20 in MATH (any)	H	2F	D or V
<b>Mechanical engineering</b>	Bachelor of Engineering (Mechanical Engineering)	73.00	30 in English (ESL) or 25 in English (any other), and 20 in MATH METH	H	4F 8P	D or V
	Bachelor of Engineering (Mechanical Engineering)/Bachelor of Commerce	73.00	30 in English (ESL) or 25 in English (any other), and 20 in MATH METH	H	5F 10P	D or V
<b>Product design engineering</b>	Bachelor of Engineering (Product Design Engineering)	RC	30 in English (ESL) or 25 in English (any other), and 20 in MATH METH	H	4F 8P	D and V
<b>Robotics and mechatronics</b>	Bachelor of Engineering (Robotics and Mechatronics)	73.85	30 in English (ESL) or 25 in English (any other), and 20 in MATH METH	H	4F 8P	D or V
	Bachelor of Engineering (Robotics and Mechatronics)/ Bachelor of Commerce	73.85	30 in English (ESL) or 25 in English (any other), and 20 in MATH METH	H	5F 10P	D or V
	Bachelor of Engineering (Robotics and Mechatronics)/Bachelor of Science (Computer Science and Software Engineering)	79.45	30 in English (ESL) or 25 in English (any other), and 20 in MATH METH	H	5F 10P	D or V

STUDY AREA	COURSE	ATAR	PREREQUISITES	CAMPUS	DURATION	APPLY
<b>DEGREES (CONTINUED)</b>						
<b>Software engineering</b>	Bachelor of Engineering (Software Engineering)	75.10	30 in English (ESL) or 25 in English (any other), and 20 in MATH METH or SPEC MATH	H	4F 8P	D or V
<b>Telecommunication and network engineering</b>	Bachelor of Engineering (Telecommunication and Network Engineering)	74.90	30 in English (ESL) or 25 in English (any other), and 20 in MATH METH	H	4F 8P	D or V
	Bachelor of Engineering (Telecommunication and Network Engineering)/Bachelor of Commerce	74.90	30 in English (ESL) or 25 in English (any other), and 20 in MATH METH	H	5F 10P	D or V
	Bachelor of Engineering (Telecommunication and Network Engineering)/Bachelor of Science (Computer Science and Software Engineering)	74.90	30 in English (ESL) or 25 in English (any other), and 20 in MATH METH	H	5F 10P	D or V
<b>Scholarships</b>	Vice-Chancellor's Scholarship – Engineering	–	Minimum ATAR of 95.00	H	Varies	D or V
<b>DIPLOMAS AND CERTIFICATES</b>						
<b>Building</b>	Advanced Diploma of Building Design (Architectural)	RC	VCE or mature age, or qualified tradesperson	C	2.5F	D or V
	Diploma of Building and Construction (Building)	RC	VCE or mature age, or industry experience and interview	C	1.5–2F	D or V
	Certificate IV in Building and Construction (Building)	RC	Apprentice or mature age	C	9mF 2P	D or V
<b>Electrical</b>	Advanced Diploma of Engineering Technology – Electrical specialising in Industrial Automation and Control, or Renewable Energy Power Supply	RC	VCE or mature age	W	2F	D or V
	Certificate IV in Electrical (post-trade)	RC	Relevant experience or qualification	W	2P	D
<b>Electronics and communications engineering</b>	Advanced Diploma of Electronics and Communications Engineering	RC	Units 1 and 2 or Units 3 and 4 MATH (any)	H	2F 4P	D or V
	Certificate III in Electronics and Communications	RC	Year 11 or mature age	H	1F	D
<b>Engineering (Post-trade)</b>	Certificate IV in Engineering with streams in CNC Machining, Maintenance Fluid Power and Press Toolmaking	RC	Apprenticeship or relevant certificate	W	2P	D
<b>Engineering technology</b>	Advanced Diploma of Engineering Technology with streams in Mechanical Engineering, Robotics and Mechatronics, and Civil Engineering	RC	Units 1 and 2 MATH (any), or relevant certificate or mature age	H	2F 4P	D or V
<b>Gas industries</b>	Certificate IV in Gas Industry Operations	RC	Employed in industry	WP	1P	D
<b>Renewable energy technology</b>	Certificate IV in Renewable Energy	RC	VCE or mature age	W	1F 2P	D or V

# Environment and Land Management

If the great outdoors is where you want to work, an environment and land management course is the perfect choice. As an environment and land management graduate you can be lucky enough to do what you love and love what you do – a chance not offered to many.

STUDY AREA	COURSE	ATAR	PREREQUISITES	CAMPUS	DURATION	APPLY
<b>DIPLOMAS AND CERTIFICATES</b>						
<b>Carbon management</b>	Diploma of Carbon Management	RC	Basic computer skills	OL	1P	D
	Course in Carbon Accounting	RC	Basic computer skills	OL	16wP	D
<b>Conservation and land management</b>	Diploma of Conservation and Land Management	RC	VCE or mature age	H, P*	2F 4P	D or V
	Certificate IV in Conservation and Land Management	RC	None	W	2P	D
<b>Horticulture</b>	Diploma of Horticulture	RC	VCE or mature age	W	1.5–2F 4P	D or V
<b>Landscape design</b>	Diploma of Sustainable Landscape Design	RC	Basic computer skills	H, P*	1F 2P	D
<b>Sustainability</b>	Diploma of Sustainability	RC	Degree or diploma	OL	1P	D

\*After 2013, teaching of this course will continue at the Hawthorn campus.

# Film and Television

A Swinburne course in film and television can help you master production skills, develop your scriptwriting talents and begin your career in cinematography, animation, special effects and more. You'll learn how to harness your natural creativity and apply it in industry.

Industry Placement is open to students studying a three-year bachelor degree in film or design. The program is a paid 24- or 48-week placement in a design firm, a creative industries enterprise, a business setting, or the design or media department of a public service organisation. Acceptance into the placement includes acceptance into the honours program. Visit [www.swinburne.edu.au/design/ip](http://www.swinburne.edu.au/design/ip) for more information.

STUDY AREA	COURSE	ATAR	PREREQUISITES	CAMPUS	DURATION	APPLY
<b>DEGREES</b>						
<b>Film and television</b>	Bachelor of Film and Television	85.80	30 in English (ESL) or 25 in English (any other)	P*	3F 6P	D or V
<b>Scholarships</b>	Vice-Chancellor's Scholarship – Design	–	Minimum ATAR of 95.00	P*	Varies	D or V
<b>DIPLOMAS AND CERTIFICATES</b>						
<b>Film and television</b>	Advanced Diploma of Screen and Media – Digital Film and Television stream incorporating Diploma of Screen and Media	RC	Post-VCE art, design or media course plus folio and interview	P*	2F	D or V

\*After 2013, teaching of this course will continue at the Hawthorn campus.

# Health Sciences

The health and community services sector is growing exponentially. The ageing population – and the ever-increasing importance placed on areas such as mental health, aged care, Indigenous health, obesity, bullying, gambling addiction and children's services – means new job opportunities are emerging rapidly.

STUDY AREA	COURSE	ATAR	PREREQUISITES	CAMPUS	DURATION	APPLY
<b>DEGREES</b>						
<b>Community health</b>	Bachelor of Community Health	n/a	30 in English (ESL) or 25 in English (any other)	H, P*	3F 6P	D or V
	Bachelor of Social Science (Community Health)	60.45	30 in English (ESL) or 25 in English (any other)	H	3F 6P	D or V
	Associate Degree of Health and Community Care	New	30 in English (ESL) or 20 in English (any other)	H	2F 4P	D or V
<b>Health science</b>	Bachelor of Health Science	New	30 in English (ESL) or 25 in English (any other)	H	3F 6P	D or V
<b>Public and environmental health</b>	Bachelor of Health Science (Public and Environmental Health)	RC	30 in English (ESL) or 25 in English (any other)	H	3F 6P	D or V
<b>Scholarships</b>	Dean's Scholarship – Faculty of Life and Social Sciences	–	Minimum ATAR of 95.00	H	Varies	D or V
<b>DIPLOMAS AND CERTIFICATES</b>						
<b>Children's services</b>	Diploma of Children's Services (Early Childhood Education and Care)	RC	Certificate III in Children's Services	W	1.5F 2P	D or V
	Certificate III in Children's Services	RC	Interest in and suitability for the field	W	6mF 1P	D or V
<b>Community services work</b>	Diploma of Community Services Work	RC	Relevant experience or qualification	W	2F	D
	Certificate IV in Community Services Work	RC	None	P*, W, WP	6mF	D
<b>Emergency medical service</b>	Certificate II in Emergency Medical Service First Response	RC	None	H	6mF	D
<b>Nursing</b>	Advanced Diploma of Nursing (Enrolled/Division 2 Nursing)	RC	Relevant qualification	W	6mP	D
	Diploma of Nursing (Enrolled/Division 2 Nursing)	RC	Police and working with children check	W	1.5F	D
<b>Occupational health and safety</b>	Advanced Diploma of Occupational Health and Safety	RC	Diploma of Occupational Health and Safety	H, OL	10mF	D
	Diploma of Occupational Health and Safety	RC	Certificate IV in Occupational Health and Safety or relevant experience	H, OL	6–10mF	D
	Certificate IV in Occupational Health and Safety	RC	None	H, OL	6–10mF	D
<b>Quality auditing</b>	Diploma of Quality Auditing	RC	None	H, OL	6–10mF	D

\*After 2013, teaching of this course will continue at the Hawthorn campus.



# Information and Communication Technologies

Dynamic and constantly evolving, the field of information and communication technologies provides exciting and challenging career opportunities. ICT is the backbone of many industries – health, transport, finance, media, manufacturing and automotive – so the skills you'll learn will be highly valued by employers.

Swinburne's ICT courses are developed in close consultation with key industry representatives. Most of our undergraduate ICT courses are accredited at the professional level with the Australian Computer Society (IT degrees) or Engineers Australia (telecommunication engineering degrees).

STUDY AREA	COURSE	ATAR	PREREQUISITES	CAMPUS	DURATION	APPLY
<b>DEGREES</b>						
<b>Business information systems</b>	Bachelor of Business Information Systems	65.15	30 in English (ESL) or 25 in English (any other)	H	3F 6P	D or V
	Bachelor of Business Information Systems/Bachelor of Commerce	65.90	30 in English (ESL) or 25 in English (any other)	H	4F 8P	D or V
<b>Computer science</b>	Bachelor of Science (Computer Science)	70.30	30 in English (ESL) or 25 in English (any other), and 20 in MATH METH	H	3F 6P	D or V
<b>Games development</b>	Bachelor of Science (Games Development)	70.25	30 in English (ESL) or 25 in English (any other), and Units 1 and 2 MATH (any)	H	3F 6P	D or V
<b>Information and communication technology – general</b>	Bachelor of Information and Communication Technology	65.15	30 in English (ESL), or 25 in English (any other), and Units 1 and 2 MATH (any)	H	3F 6P	D or V
<b>Information systems</b>	Bachelor of Technology (Information Systems)	New	30 in English (ESL) or 25 in English (any other)	OL	3F 6P	D or V
<b>Information technology – scholarship program</b>	Bachelor of Information Technology	80.35	30 in English (ESL) or 25 in English (any other), and 20 in MATH (any)	H	3F 6P	D or V
<b>Network design and security</b>	Bachelor of Information and Communication Technology (Network Design and Security)	70.05	30 in English (ESL) or 25 in English (any other), and Units 1 and 2 MATH (any)	H	3F 6P	D or V
<b>Software development</b>	Bachelor of Applied Information and Communication Technology	50.95	30 in English (ESL) or 25 in English (any other)	H and W	3F 6P	D or V
	Bachelor of Science (Professional Software Development)	70.55	30 in English (ESL) or 25 in English (any other), and Units 1 and 2 MATH (any)	H	3F	D or V
	Associate Degree of Applied Information and Communication Technology	51.20	30 in English (ESL) or 20 in English (any other)	H, W	2F	D or V
<b>Scholarships</b>	Vice-Chancellor's Scholarship – Information Technology/Science	–	Minimum ATAR of 95.00	H	Varies	D or V
<b>DIPLOMAS AND CERTIFICATES</b>						
<b>Computer systems technology</b>	Advanced Diploma of Computer Systems Technology	RC	Relevant experience or qualification	H	1F	D
	Certificate IV in Computer Systems Technology	RC	None	H	1F	D
<b>Information technology</b>	Certificate III in Information, Digital Media and Technology	RC	None	W	0.5–1P	D
<b>Networking</b>	Diploma of Information Technology Networking	RC	Relevant experience or qualification	H, W	2F 4P	D or V
	Certificate IV in Information Technology Networking	RC	None	H, W	1F 2P	D or V
<b>Software development</b>	Diploma of Software Development	RC	Relevant experience or qualification	H, W	1F	D
<b>Systems administration</b>	Diploma of Information Technology Systems Administration	RC	Relevant experience or qualification	H, W	1F	D
<b>Web-based technology</b>	Certificate IV in Web-Based Technologies	RC	None	H, W	1F 2P	D
<b>Website development</b>	Diploma of Website Development	RC	Relevant experience or qualification	H, W	1F	D

# Media and Communications

A media and communications qualification could be your entry point into a wide range of exciting career opportunities. You can discover how to develop innovative communications campaigns, learn about the way media is evolving and explore the connections between media, public relations and design.

STUDY AREA	COURSE	ATAR	PREREQUISITES	CAMPUS	DURATION	APPLY
<b>DEGREES</b>						
<b>Advertising</b>	Bachelor of Communication (Advertising)	50.60	30 in English (ESL) or 25 in English (any other)	H	3F 6P	D or V
<b>Communication</b>	Bachelor of Communication	55.95	30 in English (ESL) or 25 in English (any other)	H	3F 6P	D or V
	Bachelor of Communication/Bachelor of Social Science	71.75	30 in English (ESL) or 25 in English (any other)	H	4F 8P	D or V
	Bachelor of Professional Communication	n/a	30 in English (ESL) or 25 in English (any other)	H	3F 6P	D or V
<b>Journalism</b>	Bachelor of Arts (Journalism)	68.00	30 in English (ESL) or 25 in English (any other)	H	3F 6P	D or V
<b>Media and communications</b>	Bachelor of Arts (Media and Communications)	65.30	30 in English (ESL) or 25 in English (any other)	H	3F 6P	D or V
<b>Media studies</b>	Bachelor of Communication (Media Studies)	n/a	30 in English (ESL) or 25 in English (any other)	H and P*	3F 6P	D or V
	Bachelor of Communication (Media Studies)	New	30 in English (ESL) or 25 in English (any other)	OL	3F 6P	D or V
	Bachelor of Social Science (Media Studies)	n/a	30 in English (ESL) or 25 in English (any other)	H	3F 6P	D or V
	Bachelor of Social Science (Media Studies)	New	30 in English (ESL) or 25 in English (any other)	OL	3F 6P	D or V
<b>Public relations</b>	Bachelor of Communication (Public Relations)	51.85	30 in English (ESL) or 25 in English (any other)	H and P*	3F 6P	D or V
	Bachelor of Communication (Public Relations)	New	30 in English (ESL) or 25 in English (any other)	OL	3F 6P	D or V
	Bachelor of Social Science (Public Relations)	n/a	30 in English (ESL) or 25 in English (any other)	H	3F 6P	D or V
	Bachelor of Social Science (Public Relations)	New	30 in English (ESL) or 25 in English (any other)	OL	3F 6P	D or V
<b>Scholarships</b>	Dean's Scholarship – Faculty of Higher Education	–	Minimum ATAR of 89.00	H	Varies	D or V
	Dean's Scholarship – Faculty of Life and Social Sciences	–	Minimum ATAR of 95.00	H	Varies	D or V
	Vice-Chancellor's Arts and Social Sciences Scholarship	–	Minimum ATAR of 95.00	H	Varies	D or V
<b>DIPLOMAS AND CERTIFICATES</b>						
<b>Journalism</b>	Diploma of Screen and Media – Integrated Journalism stream	RC	VCE or mature age plus folio and interview	P*	1F	D and V
<b>Professional writing and editing</b>	Diploma of Professional Writing and Editing	RC	VCE or mature age plus relevant qualification or industry experience	P*	1F	D
	Certificate IV in Professional Writing and Editing	RC	VCE or mature age	P*	1F	D

\*After 2013, teaching of this course will continue at the Hawthorn campus.



“ Studying at the Hawthorn campus is great because it’s a friendly, supportive learning environment and is centrally located. This course appealed to me because it offers a broad range of subjects; I’m able to learn about issues that relate not just to the media industry, but also to everyday life. ”

**Marlee**  
Bachelor of Arts (Media and Communications)

# Performing and Creative Arts

Whether you aspire to be an artist, a performer or a vision-maker behind the scenes, a creative arts course can help you to do what many only dream of – transform your passion from a pastime into a profession.

STUDY AREA	COURSE	ATAR	PREREQUISITES	CAMPUS	DURATION	APPLY
<b>DIPLOMAS AND CERTIFICATES</b>						
<b>Costume</b>	Diploma of Costume for Performance	RC	VCE or mature age plus folio and interview	P*	1F	D or V
<b>Make-up</b>	Diploma of Specialist Make-Up Services	RC	VCE or mature age plus folio and interview	P*	1F	D or V
<b>Technical theatre</b>	Diploma of Live Production, Theatre and Events (Technical Production)	RC	VCE or mature age plus folio and interview	P*	1F	D or V
<b>Theatre arts</b>	Diploma of Theatre Arts	RC	VCE or mature age plus one-day workshop	P*	1F	D or V
<b>Visual arts</b>	Diploma of Visual Art	RC	VCE or mature age plus folio and interview	P*	1F	D or V

\*After 2013, teaching of this course will continue at the Hawthorn campus.

# Psychology

If being able to understand and explain human behaviour and relationships interests you, a course in psychology could be the right choice. Psychology graduates are sought by a wide range of organisations, and not just in counselling roles. A degree in psychology could help you work in areas such as human resources, marketing, journalism or policy development.

STUDY AREA	COURSE	ATAR	PREREQUISITES	CAMPUS	DURATION	APPLY
<b>DEGREES</b>						
<b>Psychology</b>	Bachelor of Arts (Psychology)	70.50	30 in English (ESL) or 25 in English (any other)	H	3F 6P	D or V
	Bachelor of Science (Psychology)	70.30	30 in English (ESL) or 25 in English (any other), and 20 in MATH (any)	H	3F 6P	D or V
	Bachelor of Social Science (Psychology)	70.05	30 in English (ESL) or 25 in English (any other)	H	3F 6P	D or V
	Bachelor of Social Science (Psychology) (ex-Lilydale)	50.60	30 in English (ESL) or 25 in English (any other)	H	3F6P	D or V
	Bachelor of Social Science (Psychology)	New	30 in English (ESL) or 25 in English (any other)	OL	3F 6P	D or V
<b>Psychology and forensic science</b>	Bachelor of Arts (Psychology and Forensic Science)	72.10	30 in English (ESL) or 25 in English (any other)	H	3F 6P	D or V
	Bachelor of Social Science (Psychology and Forensic Science)	72.30	30 in English (ESL) or 25 in English (any other)	H	3F 6P	D or V
<b>Psychology and psychophysiology</b>	Bachelor of Arts (Psychology and Psychophysiology)	72.00	30 in English (ESL) or 25 in English (any other), and 20 in MATH (any)	H	3F 6P	D or V
	Bachelor of Science (Psychology and Psychophysiology)	72.15	30 in English (ESL) or 25 in English (any other), and 20 in MATH (any)	H	3F 6P	D or V
<b>Psychology and sport science</b>	Bachelor of Arts (Psychology and Sport Science)	72.40	30 in English (ESL) or 25 in English (any other)	H	3F 6P	D or V
	Bachelor of Social Science (Psychology and Sport Science)	72.40	30 in English (ESL) or 25 in English (any other)	H	3F 6P	D or V
<b>Psychophysiology</b>	Bachelor of Arts (Psychophysiology)	New	30 in English (ESL) or 25 in English (any other), and 20 in MATH (any)	H	3F 6P	D or V
<b>Scholarships</b>	Dean's Scholarship – Faculty of Higher Education	–	Minimum ATAR of 89.00	H	Varies	D or V
	Dean's Scholarship – Faculty of Life and Social Sciences	–	Minimum ATAR of 95.00	H	Varies	D or V
	Vice-Chancellor's Arts and Social Sciences Scholarship	–	Minimum ATAR of 95.00	H	Varies	D or V

# Science

Scientific and technological knowledge is advancing at an unprecedented rate. By encouraging you to put your natural curiosity to practical use, Swinburne's science qualifications put you on a career path of inquiry and discovery.

Our commitment to excellence in science teaching and research was reflected in our inclusion again in the 2011 Academic Ranking of World Universities (ARWU), which named Swinburne a top 100 research university in the field of physics.

STUDY AREA	COURSE	ATAR	PREREQUISITES	CAMPUS	DURATION	APPLY
<b>DEGREES</b>						
<b>Biochemistry and chemistry</b>	Bachelor of Science (Biochemistry and Chemistry)	72.10	30 in English (ESL) or 25 in English (any other), and 20 in MATH (any)	H	3F 6P	D or V
<b>Biomedical</b>	Bachelor of Science (Biomedical Sciences)	70.05	30 in English (ESL) or 25 in English (any other), and 20 in MATH (any)	H	3F 6P	D or V
<b>Biosciences</b>	Bachelor of Science (Biosciences)	70.05	30 in English (ESL) or 25 in English (any other), and 20 in MATH (any)	H	3F 6P	D or V
<b>Biotechnology</b>	Bachelor of Science (Biotechnology)	72.10	30 in English (ESL) or 25 in English (any other), and 20 in MATH (any)	H	3F 6P	D or V
	Bachelor of Science (Biotechnology)/Bachelor of Commerce	72.10	30 in English (ESL) or 25 in English (any other), and 20 in MATH (any)	H	4F 8P	D or V
<b>Chemistry</b>	Bachelor of Science (Chemistry)	72.10	30 in English (ESL) or 25 in English (any other), and 20 in MATH (any)	H	3F 6P	D or V
<b>Environmental sustainability</b>	Bachelor of Science (Environmental Sustainability)	n/a	30 in English (ESL) or 25 in English (any other), and 20 in MATH (any)	H	3F 6P	D or V
<b>Medical biophysics</b>	Bachelor of Science (Medical Biophysics)	70.05	30 in English (ESL) or 25 in English (any other), and 20 in MATH (any)	H	3F 6P	D or V
<b>Medical technology</b>	Bachelor of Science (Medical Technology)	70.05	30 in English (ESL) or 25 in English (any other), and 20 in MATH (any)	H	3F 6P	D or V
<b>Science</b>	Bachelor of Science	67.40	30 in English (ESL) or 25 in English (any other), and 20 in MATH (any)	H	3F 6P	D or V
<b>Scholarships</b>	Dean's Scholarship – Faculty of Life and Social Sciences	–	Minimum ATAR of 95.00	H	Varies	D or V
	Vice-Chancellor's Scholarship – Information Technology/ Science	–	Minimum ATAR of 95.00	H	Varies	D or V
<b>DIPLOMAS AND CERTIFICATES</b>						
<b>Laboratory technology</b>	Diploma of Laboratory Technology	RC	VCE or mature age	H	2F 4P	D or V

# Apprenticeships and Traineeships

If you're wanting to take that first step towards a successful career or get ahead in your career, an apprenticeship or traineeship could be the right choice for you. Apprenticeships and traineeships, officially known as 'Australian Apprenticeships', combine paid work with training towards a nationally recognised qualification.

STUDY AREA	COURSE	ATAR	PREREQUISITES	CAMPUS	DURATION	APPLY
<b>PRE-APPRENTICESHIPS</b>						
<b>Building and construction</b>	Certificate II in Building and Construction (Bricklaying) Certificate II in Building and Construction (Carpentry) Certificate II in Building and Construction (Painting and Decorating)	RC	Year 10 or mature age	C	16wF	D
<b>Electrical</b>	Certificate II in Electrotechnology Studies (Pre-vocational)	RC	Year 10 or mature age	C, W	10wF 20wP	D
<b>Engineering</b>	Certificate II in Engineering Studies	RC	Year 10	W	2P	D
<b>Horticulture and conservation</b>	Certificate II in Conservation and Land Management	RC	Year 10	W, WP	6mF	D
	Certificate II in Horticulture	RC	Year 10	W	6mF	D
<b>Plumbing</b>	Certificate II in Plumbing (Pre-apprenticeship)	RC	Year 10 or mature age	C	14wF	D
<b>APPRENTICESHIPS</b>						
<b>Electrical</b>	Certificate III in Electrotechnology Electrician	RC	At least 15 years plus employed as an apprentice	C, W	4P	D
<b>Electronics and communications</b>	Certificate III in Electronics and Communications	RC	Employed in industry	H	2F	D
<b>Engineering</b>	Certificate III in Engineering – Fabrication Trade	RC	At least 15 years plus employed as an apprentice	W	3P	D
	Certificate III in Engineering – Mechanical Trade	RC	At least 15 years plus employed as an apprentice	W	3P	D
<b>General construction</b>	Certificate III in Bricklaying and Blocklaying Certificate III in Carpentry	RC	At least 15 years plus employed as an apprentice	C	3P	D
<b>Horticulture</b>	Certificate III in Horticulture (Parks and Gardens) Certificate III in Horticulture (Wholesale Nursery)	RC	At least 15 years plus employed as an apprentice	W, WP	3P	D
<b>Plumbing</b>	Certificate III in Plumbing	RC	Year 10 plus employed as an apprentice	C	3P	D
<b>TRAINEESHIPS</b>						
<b>Business</b>	Diploma of Business	RC	Employed as a trainee	WP	1-1.5F 3P	D
<b>Business administration</b>	Certificate III/IV in Business Administration	RC	Employed as a trainee	WP	2F 4P	D
<b>Business sales</b>	Certificate IV in Business Sales	RC	Employed as a trainee	WP	6mF 1P	D
<b>Children's services</b>	Diploma of Children's Services (Early Childhood Education and Care)	RC	Employed as a trainee	P*, W	2P	D
	Certificate III in Children's Services	RC	Employed as a trainee	P*, W	1P	D
<b>Digital and interactive games</b>	Certificate IV in Digital and Interactive Games	RC	None	H	1-3P	D
<b>Digital media technology</b>	Certificate IV/Diploma of Digital Media Technologies	RC	None	H, W	3-6P	D
<b>Disability work</b>	Certificate IV in Disability	RC	Employed as a trainee	WP	1F	D
<b>Health assistance</b>	Certificate III in Health Services Assistance	RC	Employed as a trainee	C, WP	6mP	D
<b>Horticulture</b>	Certificate II in Horticulture	RC	At least 15 years plus employed as a trainee	W	1-1.5P	D
<b>Human resources</b>	Diploma of Human Resources Management	RC	Employed in industry	H, OL	1.5P	D or V
	Certificate IV in Human Resources	RC	Employed in industry	H, OL	1.5P	D or V
<b>Laboratory operations</b>	Certificate IV in Laboratory Techniques	RC	Employed as a trainee	WP	1.5-3P	D
	Certificate III in Laboratory Skills	RC	Employed as a trainee	WP	1-2P	D
<b>Library/Information services</b>	Diploma of Library/Information Services	RC	Employed as a trainee	P*, OL	1F	D
	Certificate IV in Library/Information Services	RC	Employed as a trainee	P*, OL	1F	D
	Certificate III in Library/Information Services	RC	Employed as a trainee	P*, OL	1-3P	D

\*After 2013, teaching of this course will continue at the Hawthorn campus.

STUDY AREA	COURSE	ATAR	PREREQUISITES	CAMPUS	DURATION	APPLY
<b>TRAINEESHIPS (CONTINUED)</b>						
<b>Management</b>	Diploma of Management	RC	Employed in industry	H, OL	1.5P	D
	Diploma of Project Management	RC	Employed in industry	H, OL	1.5P	D
	Certificate IV in Frontline Management	RC	Employed in industry	H, OL	1.5P	D
	Certificate IV in Project Management	RC	Employed in industry	OL	1.5P	D
<b>Marketing</b>	Diploma of Marketing	RC	Relevant experience	H	1P	D
<b>Programming</b>	Certificate IV in Programming	RC	Employed as a trainee	WP	3–6P	D
<b>Real estate</b>	Certificate IV in Property Services (Real Estate)	RC	Employed as a trainee	P*, W, OL	6mP	D
<b>Retail operations</b>	Certificate IV in Retail Management	RC	Relevant experience or qualification	WP	9m–2F	D
	Certificate III in Retail	RC	Relevant experience or qualification	WP	9m–2F	D
	Certificate II in Retail	RC	None	WP	9m–2F	D
<b>Web-based technology</b>	Certificate IV in Web-Based Technologies	RC	None	H, W	1F 2P	D

\*After 2013, teaching of this course will continue at the Hawthorn campus.



# English Language and Study Skills

English language and study skills programs are for students who have had little formal education. They are also helpful for anyone from a non-English speaking background.

STUDY AREA	COURSE	ATAR	PREREQUISITES	CAMPUS	DURATION	APPLY
<b>DIPLOMAS AND CERTIFICATES</b>						
<b>Bridging science</b>	Certificate IV in Science	RC	None	H, WP	1F 2P	D or V
<b>English as a second language</b>	Certificate IV in ESL (Further Study)	RC	English is not first language	H, P*	20wF	D
	Certificate III in ESL (Access)	RC	English is not first language	W	20wF	D
	Certificate I/II/III in Spoken and Written English	RC	English is not first language	C, H, P*, W	20wF	D
<b>General education for adults</b>	Certificate I/II/III in General Education for Adults	RC	Must speak English	C, P*, W	20wF 40wP	D
	Certificate I in General Education for Adults (Introductory)	RC	Must speak English	C, W	20wF 40wP	D
<b>Study skills</b>	Course in Tertiary Transition Skills	RC	None	H, W, OL	2wF 10wP	D
<b>Transition education</b>	Certificate I in Transition Education	RC	At least 16 years	W	1F	D
<b>VCAL</b>	Victorian Certificate of Applied Learning – Intermediate and Senior Levels	RC	Year 10 and 16–19 years	C, W	1–2F	D

\*After 2013, teaching of this course will continue at the Hawthorn campus.

# Vocational Education and Training Practice

Vocational education and training practice courses are designed to prepare you for a teaching role across a range of settings.

STUDY AREA	COURSE	ATAR	PREREQUISITES	CAMPUS	DURATION	APPLY
<b>DIPLOMAS AND CERTIFICATES</b>						
<b>Training and assessment</b>	Certificate IV in Training and Assessment	RC	None	H, W, WP	5-7mP	D
<b>VET practice</b>	Diploma of Vocational Education and Training Practice	RC	Certificate IV in Training and Assessment	W	1-1.5P	D



# The new home of design and innovation

Currently under construction in the site next to the Advanced Technologies Centre is our state-of-the-art \$100 million centre dedicated to design and innovation. The facility is partially funded by the federal government, which pledged \$40 million to the project in 2010.

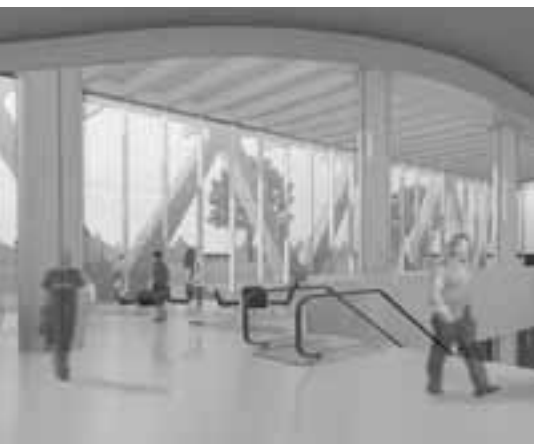
The centre is designed to be a hub for researchers and industry to carry out world-leading research, education and training. Leading multinational companies Boeing and Suntech Power Holdings are foundation partners in the centre.

The facility will also house a 'Factory of the Future', where students will be trained in the latest manufacturing techniques, transforming engineering education at Swinburne.

The Faculty of Design will also be located in this new building, bringing design students closer to engineering and business students and allowing for more collaborative learning.

Sinclair Knight Merz and London-based WilkinsonEyre Architects were commissioned to design the centre. The design comprises a six-storey block 'floating' above a retained Victorian facade at street level. Sculpted vertical fins, inspired by engine turbine blades, are modelled for optimum solar shading while also achieving transparency and giving a three-dimensional shape to the outer skin of the building.

Construction is due to be completed in 2014.



*Artist's impressions of our new home of design and innovation.*

## ■ KEY DATES

Throughout 2012

One-on-one course adviser appointments

12 September 2012

Parents Information Evening

19 December 2012

Change of Preference Expo

## ■ FURTHER INFORMATION

1300 275 794

[study@swinburne.edu.au](mailto:study@swinburne.edu.au)

[swinburne.edu.au/future](http://swinburne.edu.au/future)



[swinburne.edu.au/facebook](http://swinburne.edu.au/facebook)



[swinburne.edu.au/twitter](http://swinburne.edu.au/twitter)



[swinburne.edu.au/youtube](http://swinburne.edu.au/youtube)



CRICOS Provider Code: 00111D

The information contained in this course guide was correct at the time of publication, August 2012.

The university reserves the right to alter or amend the material contained in this guide. The information in this guide does not apply to international students. For information about courses for international students please go to [www.swinburne.edu.au/international](http://www.swinburne.edu.au/international)

Production information:

Printed with vegetable-based inks on paper manufactured under the ISO14001 environmental management systems standard.