

# Swinburne Postgraduate Programs 2017







# WORLD CLASS, WORLD RANKED



Enhance your career opportunities, benefit from valuable industry connections and enjoy flexible learning options with a postgraduate program at Swinburne.

## World-ranked university

Swinburne is an internationally recognised research-intensive university. Our rankings – top 100 universities in the world under 50 years old by the 2015 QS World University Rankings and the 2016 Times Higher Education Rankings – prove the success of our focus on and investment in high-quality teaching and research. It is why we are leaders in science, technology, innovation, business and design.

## Quality teaching

With a reputation for quality education and focused research, Swinburne attracts highly qualified academics and educational leaders who have industry experience in the areas they teach.

## Valued graduates

Swinburne is known for its links with successful business and industry, and for developing international partnerships and collaborations. In recognition of our commitment to career-ready graduates Swinburne was named among the top 200 universities in the world for graduate employability by the 2015 QS World University Rankings.

## Research excellence

Swinburne has an international reputation for research that connects science and technology with business and the community. Our research has produced numerous innovative breakthroughs and is recognised internationally.

## Modern and safe campus

Our main campus at Hawthorn is a vibrant community in a top inner-urban location. We offer a supportive, secure and peaceful environment with modern facilities. Our new Advanced Manufacturing and Design Centre is a symbol of the study opportunities, innovative thinking and dynamic campus life at Swinburne.

I look forward to seeing you at Swinburne.

**Professor Linda Kristjanson**  
Vice-Chancellor and President  
Swinburne University of Technology

# SWINBURNE

at a glance

No. **74**

**IN THE WORLD  
UNDER 50 YEARS OLD**

Times Higher Education  
150 Under 50, 2016

**TOP  
100**

**PHYSICS**

2015 Academic Ranking  
of World Universities

**TOP  
200**

**Media and Communications**

2016 QS World University  
Rankings by Subject

**5 STARS**

**OVERALL GRADUATE SATISFACTION**

*The Good Universities Guide, 2016*

**8500**

**INTERNATIONAL STUDENTS**

**53,000**

**STUDENTS**

**TOP  
100**

**MOST INTERNATIONAL UNIVERSITIES  
IN THE WORLD**

Times Higher Education Top 200 most  
international universities, 2016

**WORLD RANKED**

No. **32**

**ART AND DESIGN**

2016 QS World University  
Rankings by Subject

**TOP  
200**

**Civil and Structural Engineering**

2016 QS World University  
Rankings by Subject





**A\$100 million** | ADVANCED  
MANUFACTURING AND  
DESIGN CENTRE



**MELBOURNE**

**WORLD'S MOST LIVEABLE CITY**

*The Economist Intelligence Unit's  
2015 Global Liveability Ranking*



GLENFERRIE TRAIN STATION  
ON CAMPUS

Our Hawthorn campus is just  
10 minutes by train from the city centre



**WORLD-CLASS  
RESEARCH**

Ranked **WELL ABOVE** world standard  
in nine fields of research in the  
Excellence in Research  
Australia 2015 ratings



WORLD RANKED  
**TOP 200**  
**GRADUATE  
EMPLOYABILITY**

QS Graduate Employability  
Rankings, 2016

# STUDYING at Swinburne

## About Melbourne

Smart, captivating, multicultural, unique, fun, trend-setting, individual and welcoming, Melbourne is the capital city of Victoria and home to four million people.

In 2015 Melbourne was again named the world's most liveable city by the Economist Intelligence Unit's Global Liveability Survey and is known as Australia's cultural, culinary and sporting capital.

## Hawthorn campus

**Student population:** 22,000

**Distance from Melbourne city centre:**  
10 km (10 minutes by train)

Hawthorn is the main campus for international students. The campus is set directly behind Glenferrie Road. This vibrant shopping hub includes laneways and arcades where you can get a great coffee and find a quiet place to read.

There is a diverse choice of restaurants and cafés plus dozens of shops and boutiques, and a bookshop. Two supermarkets and a number of international grocers mean you'll never have to go far for the essentials.

You can also take a break from study to visit the Central Gardens, go to the gym at the newly renovated Hawthorn Aquatic and Leisure Centre, or visit Hawthorn's newest movie theatre, Lido Cinemas.

## Multimillion-dollar facilities

Major refurbishments and new infrastructure are a feature at our Hawthorn campus. The development of new buildings, renovation of existing buildings and landscaping enhance the study environment and education experience we offer our students.







Swinburne's Advanced Technologies Centre



Swinburne's Advanced Manufacturing and Design Centre

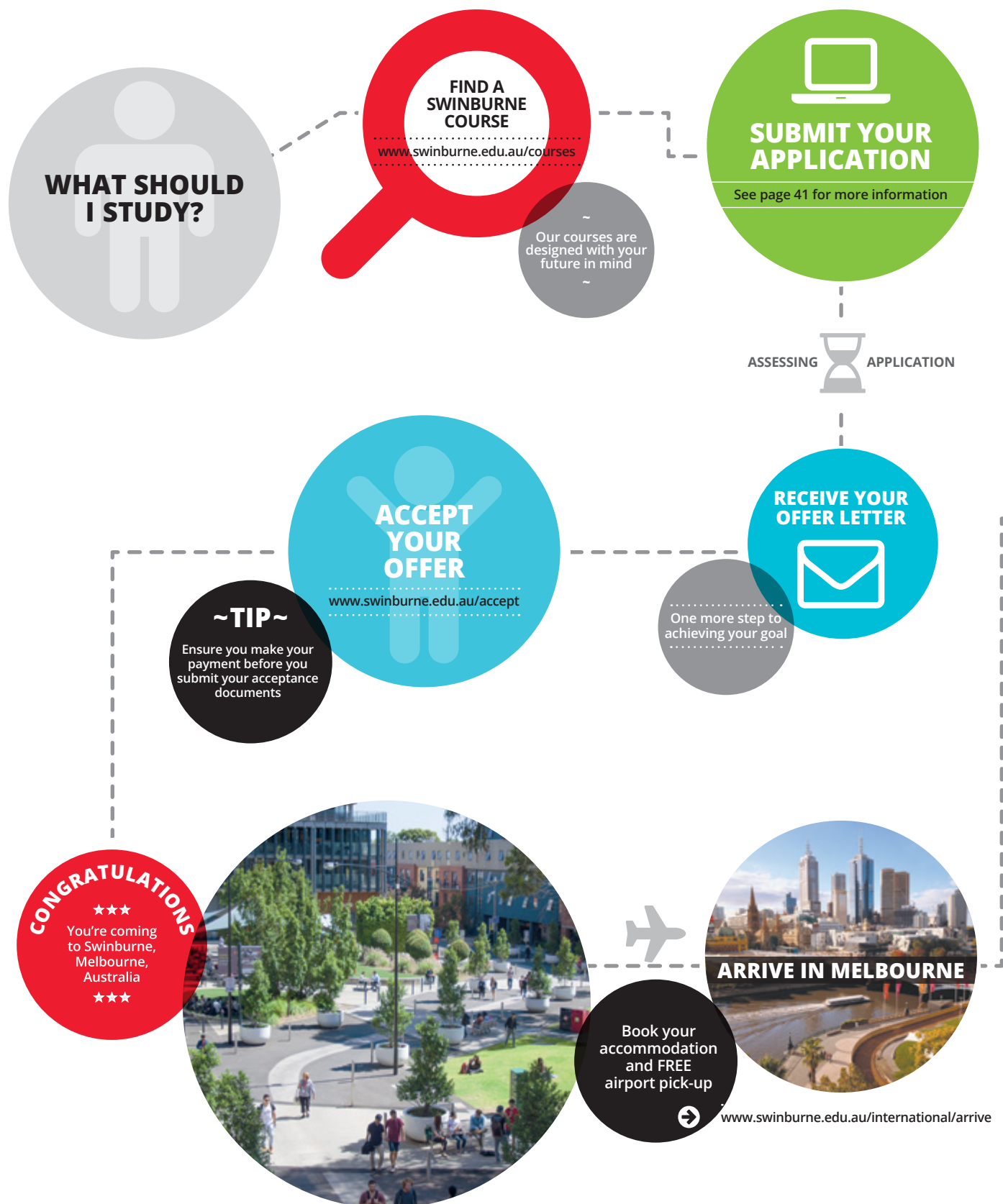


Swinburne's Factory of the Future

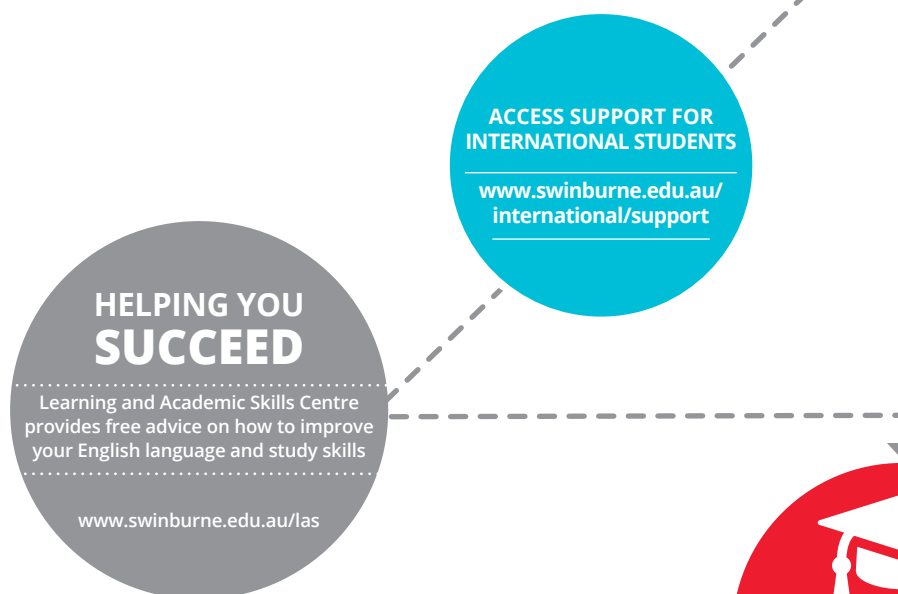


Glenferrie Road, Hawthorn

# Your Swinburne JOURNEY











Centre of Hawthorn campus



Melbourne's city centre



Campus activities



On-campus accommodation



On-campus accommodation



# LIVING IN Melbourne

Melbourne is known for its restaurant scene, meandering laneways, exciting cafes and boutique shopping.

In the city centre you can explore grand, tree-lined streets and discover hidden laneways while experiencing first-class shopping, dining, theatre and entertainment options. A wide range of festivals are held throughout the year in the CBD, and you'll also find a number of cultural and arts venues such as the National Gallery of Victoria and the Australian Centre for the Moving Image.

Melbourne's inner-urban suburbs are also popular destinations: St Kilda offers beaches, clubs, bars and restaurants; Carlton has an Italian feel with coffee shops, pizzerias, bookshops and an arthouse cinema; Prahran is filled with trendy fashion boutiques; and Fitzroy has a bohemian vibe with unique shopping and dining options.

## Accommodation

There is a range of housing options available. Visit [www.swinburne.edu.au/accommodation](http://www.swinburne.edu.au/accommodation)

	Private rental accommodation	Share accommodation	Homestay	On-campus accommodation
<b>Description</b>	Renting your own unfurnished apartment or house	Sharing a rental house or apartment with other students	Living in a furnished bedroom as a guest in a local family's home	Living in a single furnished room in an apartment or college, usually sharing the apartment with other students
<b>Cost</b>	<b>Hawthorn and inner-city suburbs</b> <ul style="list-style-type: none"> <li>• A\$200–A\$350 per week (1BR)</li> <li>• A\$300–A\$450 per week (2BR) plus bills (A\$20–A\$30 per week)</li> </ul> <b>Outer suburbs</b> <ul style="list-style-type: none"> <li>• A\$180–A\$250 per week (1BR)</li> <li>• A\$200–A\$350 per week (2BR)</li> </ul>	<b>Hawthorn and inner-city suburbs</b> <ul style="list-style-type: none"> <li>• A\$130–A\$170 per week plus bills</li> </ul> <b>Outer suburbs</b> <ul style="list-style-type: none"> <li>• A\$100–A\$150 per week plus bills</li> </ul>	A\$280 per week, including two to three meals per day and bills (except telephone and internet)	<b>Swinburne Residential College</b> <ul style="list-style-type: none"> <li>• A\$250–A\$369 per week</li> </ul> <b>Swinburne Place Apartments</b> <ul style="list-style-type: none"> <li>• A\$250–A\$369 per week</li> </ul>
<b>Contract</b>	Minimum 12 months	Varies	Minimum four weeks	Varies
<b>Advantages</b>	<ul style="list-style-type: none"> <li>• Independent</li> <li>• Can choose what you want</li> </ul>	<ul style="list-style-type: none"> <li>• Cheaper than other options</li> <li>• Independent</li> <li>• Meet new friends</li> </ul>	<ul style="list-style-type: none"> <li>• Learn about the Australian lifestyle</li> <li>• Family orientated environment</li> </ul>	<ul style="list-style-type: none"> <li>• Close to university facilities</li> <li>• Meet friends</li> <li>• Shops, restaurants and public transport nearby</li> </ul>
<b>Disadvantages</b>	<ul style="list-style-type: none"> <li>• Must buy furniture</li> <li>• May have to find share mate</li> <li>• Very difficult to break lease</li> </ul>	<ul style="list-style-type: none"> <li>• Living with people who you don't know and may have a different lifestyle from you</li> </ul>	<ul style="list-style-type: none"> <li>• Limited privacy</li> <li>• Have to fit in with the family's lifestyle</li> </ul>	<ul style="list-style-type: none"> <li>• More expensive than other options</li> </ul>
<b>Procedure</b>	<ol style="list-style-type: none"> <li>1. Locate property</li> <li>2. Inspect property</li> <li>3. Lodge application</li> <li>4. Sign the lease contract</li> <li>5. Connect utilities</li> <li>6. Move in</li> </ol>	<ol style="list-style-type: none"> <li>1. Locate property</li> <li>2. Inspect property</li> <li>3. Sign the lease contract</li> <li>4. Move in</li> </ol>	<ol style="list-style-type: none"> <li>1. Apply online</li> <li>2. Inspect property</li> <li>3. Pay fees</li> <li>4. Move in</li> </ol>	<ol style="list-style-type: none"> <li>1. Apply directly to the provider</li> <li>2. Receive an offer</li> <li>3. Move in</li> </ol>
<b>Contact</b>	<a href="http://www.swinburne.edu.au/stuserv/accommodation/off-campus/renting">www.swinburne.edu.au/stuserv/accommodation/off-campus/renting</a>	<a href="http://www.swinburne.edu.au/stuserv/accommodation/off-campus/sharing">www.swinburne.edu.au/stuserv/accommodation/off-campus/sharing</a>	<a href="http://www.swinburne.edu.au/international/homestay">www.swinburne.edu.au/international/homestay</a> <a href="http://www.homestaynetwork.org/public/students">www.homestaynetwork.org/public/students</a>	<a href="http://www.swinburne.edu.au/stuserv/accommodation/on-campus/">www.swinburne.edu.au/stuserv/accommodation/on-campus/</a>

## Living costs

Living costs will depend on the accommodation you choose and the lifestyle you lead, and as such all costs in this section are indicative only.

Students who are living and studying in Melbourne will require approximately A\$23,000 to A\$30,000 per year for ongoing living costs (not including tuition fees or airfares). Add to this a budget of approximately A\$2300 to A\$5000 for the initial costs of establishing yourself in Melbourne and approximately A\$1000 to A\$2000 if you need to purchase a computer.

Visit [www.swinburne.edu.au/international/living-expenses](http://www.swinburne.edu.au/international/living-expenses)

The Australian Government requires prospective student visa applicants and any family members accompanying them to have access to minimum funds to meet the living costs requirements.

Visit [www.border.gov.au/students](http://www.border.gov.au/students) for more information.

# STUDENT LIFE at Swinburne

## Swinburne International

Staff at Swinburne International are responsible for the admission, orientation and support of all international students. They are your first point of contact when you arrive at Swinburne and provide ongoing support with your application, health insurance, accommodation, visas, course information and referrals to other services both on and off campus.

International student advisers provide advice and support to help international students adjust to life and study in Australia. They provide a comprehensive advisory and referral service to the many specialist services on and off campus covering both academic and pastoral care.

Visit [www.swinburne.edu.au/international](http://www.swinburne.edu.au/international) to find out more about the services available.

### After-hours information hotline

Swinburne's after-hours hotline provides information to international students with medical, safety, environmental, mental health, accommodation, transport and other enquiries.

The service is available between 5pm and 9am on weekdays and is open 24 hours on weekends. The number is 1800 022 168.

For enquiries during business hours (9am to 5pm), contact Swinburne International.

### Support for sponsored students

Swinburne International assists scholarship recipients and sponsoring agencies (such as governments, employers or other organisations) with administrative, reporting and financial arrangements, as well as a range of support services and programs.

## Academic life

Our Hawthorn campus offers:

- wi-fi access
- 24-hour computer lab
- state-of-the-art library.

### Modes of study

You will have the opportunity to participate in a variety of types of study depending on your chosen course. These may include lectures, workshops, tutorials, laboratory and studio sessions, group work, cross-discipline projects, case studies, practical sessions, discussion groups, online learning and research projects.

### Assessment methods

At Swinburne, assessment takes various forms. You could be assessed through a combination of assignments, reports, examinations, class presentations, practicals, class participation and group projects.

Assessment methods for research students include being assessed on the quality of their research and their ability to appropriately convey their findings.

### Language and study skills services

Swinburne's language and academic skills advisers can help you to improve your English and study skills so you can achieve better results. You can attend free workshops, join a conversation group or make an individual appointment with an adviser.

## Campus life

Swinburne offers a range of services to international students, including:

- prayer room
- counselling services
- health clinic, including appointments with registered nurses and doctors
- disability support services
- financial services
- legal advice.

### Clubs and societies

There is a variety of Swinburne clubs and societies in which to get involved. Covering every social, religious, sporting, regional, political and cultural interest you can think of, there's bound to be something for you.

### Events and activities

A full calendar of events and cultural activities – including trips to popular tourist destinations around Australia, free on-campus activities and social events – allows you to enjoy a balance between study and life, make new friends and experience the sights of Australia.

### Sport and recreation

Gym facilities are available at the newly renovated Hawthorn Aquatic and Leisure Centre, a short walk from the Hawthorn campus. There are also several sporting clubs you can join.



# Improving your **JOB PROSPECTS**

Swinburne offers a range of services and programs that extend beyond what you learn in the classroom to enhance your qualification and help prepare you for your career.

## **Professional master degrees**

Our professional master degrees were developed to help you transition smoothly from the classroom to the workforce. A key feature of these degrees is the opportunity to apply the knowledge and skills learned in the classroom to a project for an industry client. You may be able to undertake part of the project at an industry site.

All of the professional master degrees include the Career Success Program, which is delivered over two years, and includes individualised career planning and one-on-one career coaching sessions. The Career Success Program also includes professional training designed to increase your employability and workplace communication, negotiation and conflict management skills.

The professional master degrees offer valuable access to industry contacts, which may enhance employability.

## **Student Leadership and Volunteer Program**

The Student Leadership and Volunteer Program provides you with opportunities to contribute to the Swinburne community through leadership and volunteering roles. Volunteers develop practical experience and have opportunities to undertake training and obtain certifications in a range of fields.

Opportunities may include mentoring, events and activities hosted by the university or its faculties, or participation in academic panels and hearings.

Visit [www.myssaa.com.au/SLVP](http://www.myssaa.com.au/SLVP)

## **Studying abroad**

The cultural experience of international study offers you a personal growth opportunity: to develop insight, communication skills and a depth of understanding. There are several international study opportunities for students, and your international study experience is usually credited towards your course.

Visit [www.swinburne.edu.au/abroad](http://www.swinburne.edu.au/abroad)

## **Careers and employment services**

The Centre for Career Development has experienced careers counsellors who provide a range of free career services for current students and recent graduates. The centre also offers a range of additional services to assist students with employment, including:

- résumé-checking
- interview practice sessions
- on-campus employment fairs
- job workshops.

Visit [www.swinburne.edu.au/careers](http://www.swinburne.edu.au/careers)

## **SwinEmploy**

SwinEmploy is an online job database that advertises professional, part-time and casual jobs. Once registered, students receive regular emails about jobs relevant to their study areas.

# OUR DEGREE structure

## Our degrees

### Coursework degrees

Swinburne has an international reputation for offering postgraduate programs with a career-focused curriculum. Our courses are taught by academics who are engaged with industry in the areas they teach. We offer courses designed to equip you with the skills and knowledge required to succeed in your chosen field.

### Double degrees

Double degrees are a great way to broaden your study experience and are highly respected by employers. They combine two areas of study, and on completion you'll be awarded two degrees.

### Professional degrees

Professional degrees are designed to allow you to transition smoothly from the classroom to the workplace. They offer a unique opportunity to actively engage with an Australian industry client and receive personalised career-coaching that is focused on enabling you to achieve your career goals. Students interested in making Australian industry contacts should consider these programs.

### Advanced degrees

Advanced degrees are designed to help you develop specialised knowledge and research skills. Students interested in exploring research techniques or pursuing a PhD or research career should consider these programs.

### Research degrees

Swinburne's research degrees allow you to plan, conduct and manage a substantial research project. As part of your course, you will engage in critical thinking and develop knowledge of ethical practice, intellectual property and commercialisation. Our research degrees give you access to specialist facilities, world-class researchers, training and support.

## Degree examples

Following are some examples of how our master degrees may be structured.

### Sample degree structure: Master of Commerce (Human Resource Management)

Year 1	Semester 1	Core	Core	Core	Core
	Semester 2	Core	Core	Elective	Elective
Year 2	Semester 1	Core	Core	Elective	Elective
	Semester 2	Core	Core	Elective	Elective

### Sample degree structure: Master of Commerce (Human Resource Management) (Professional)

Year 1	Semester 1	Core	Core	Core	Core
	Semester 2	Core	Core	Elective	Elective
Year 2	Semester 1	Core	Core	Elective	Elective
	Semester 2	Core	Core	Industry Project	Industry Project

### Sample degree structure: Master of Commerce (Human Resource Management) (Advanced)

Year 1	Semester 1	Core	Core	Core	Core
	Semester 2	Core	Core	Elective	Elective
Year 2	Semester 1	Core	Core	Elective	Elective
	Semester 2	Research methodology	Research methodology	Research Project	Research Project





Swinburne's Advanced  
Manufacturing and Design Centre

# Research **EXCELLENCE**

Swinburne has an international reputation for quality research that connects science and technology with business and the community. Our researchers foster national and international academic networks and connections with industry, providing excellent opportunities for students.

In 2015 Swinburne was ranked as one of the world's top 400 research-intensive universities by the Academic Ranking of World Universities (ARWU). The ARWU also named Swinburne a top 100 research university in the field of physics.

Our commitment to high-quality teaching and research was reflected in our ratings in the Australian Government's latest Excellence in Research for Australia report. Swinburne received the highest possible rating of 'well above world standard' for:

- astronomical and space sciences
- maritime engineering
- physical sciences.

Swinburne was also rated 'above world standard' for:

- communication and media studies
- computer software
- materials engineering
- optical physics
- physical chemistry
- psychology.

## Research centres

Swinburne has a number of designated research centres that bring together leading researchers and provide valuable opportunities for research students.

- Brain and Psychological Sciences Research Centre
- Centre for Advanced Internet Architectures
- Centre for Astrophysics and Supercomputing
- Centre for Design Innovation
- Centre for Forensic Behavioural Science
- Centre for Human Psychopharmacology
- Centre for Micro-Photonics
- Centre for Ocean Engineering Science and Technology
- Centre for Quantum and Optical Science
- Centre for Social Impact Swinburne
- Centre for Sustainable Infrastructure
- Centre for Transformative Innovation
- Industrial Research Institute Swinburne
- Swinburne Institute for Social Research
- Swinburne Sarawak Research Centre for Sustainable Technologies
- Swinburne University Centre for Computing and Engineering Software Systems.

## Research focus

Our research is carried out across a range of multidisciplinary fields. Swinburne has particular research strengths in:

- astrophysics and physics
- aviation
- biomedical and health sciences
- brain and psychological sciences
- business
- civil and construction engineering
- computer science and software engineering
- design
- humanities and social sciences
- maritime engineering
- mathematics
- mechanical, materials and manufacturing engineering
- methodology and statistics
- telecommunications, electrical and robotics engineering.

As part of our vision to become Australia's leading university in the areas of science, technology and innovation by 2020, we are committed to producing outstanding research that is relevant and internationally recognised.

Our research focus will extend to five outcome areas:

- future manufacturing
- sustainable futures
- digital frontiers
- personal and societal wellbeing
- inspirational science and technology.

## Research achievements

Our research has produced numerous science, technology and innovation breakthroughs. To see our greatest achievements visit [www.swinburne.edu.au/research/strengths-achievements/achievements-recognition](http://www.swinburne.edu.au/research/strengths-achievements/achievements-recognition)

## Higher degree by research programs

Swinburne offers three types of higher degree by research programs:

Masters by Research, Doctor of Philosophy and Professional Doctorate:

- Master by Research
- Doctor of Philosophy (PhD)
  - PhD by Thesis
  - PhD by Artefact and Exegesis
  - PhD by Including Associated Papers
  - PhD by Practice Based Research
  - PhD by Clinical Psychology
  - PhD by Technology Innovation
- Professional Doctorates.

## Partnered PhD program

Our Partnered PhD program allows approved PhD students to complete their research degree jointly at Swinburne and at an international or Australian partner university. Students will be supervised jointly by academics from Swinburne and academics from the partner university to undertake a single joint doctoral degree.

Graduates are awarded a testamur that clearly reflects the collaborative nature of the program by bearing the crests of both universities.

Our partnered PhD programs allow students to:

- enhance their research by collaborating with national and international experts while building professional networks
- gain valuable national and international exposure and experience in the management of global research projects
- broaden their future employment opportunities
- learn how to navigate different research and educational systems
- access facilities and skills training from two research-intensive universities.

Visit [www.swinburne.edu.au/research/research-degrees/degrees-programs/partnered-phd-programs](http://www.swinburne.edu.au/research/research-degrees/degrees-programs/partnered-phd-programs)

## Scholarships

Swinburne offers research scholarships each year, so if you are highly qualified and thinking about a higher degree by research, we encourage you to apply for a research scholarship at Swinburne.

There are also a number of external scholarships available to research students.

Visit [www.swinburne.edu.au/research/research-degrees/scholarships](http://www.swinburne.edu.au/research/research-degrees/scholarships)

## How to apply

Follow these steps to apply for a master by research or PhD program at Swinburne.

- 1 Make sure you are eligible to undertake a research program
- 2 Determine your research area of interest
- 3 Find a supervisor
- 4 Complete the application form
- 5 Attach supporting documentation
- 6 Submit your application

Visit [www.swinburne.edu.au/research/research-degrees/application-process](http://www.swinburne.edu.au/research/research-degrees/application-process)



# English LANGUAGE COURSES

English Language Intensive Courses for Overseas Students (ELICOS) give you the opportunity to learn from qualified teachers, interact in English in a multicultural environment and prepare for entry to other Swinburne programs.

Courses range from elementary to advanced levels. A new intake commences every five weeks, so you can start when it suits you.

Course duration is between five and 50 weeks. The length of your course will depend on your current level of English and whether you want to continue with further study.

All English language courses are delivered at the Hawthorn campus.

## General English

### Elementary, Pre-intermediate and Intermediate

These courses will help you to improve your everyday English. They cover reading, writing, listening and speaking, punctuation and grammar.

Classes include:

- listening and oral communication skills
- grammar and vocabulary development
- supervised independent learning
- excursions and social activities.

## English for Academic Purposes

### Intermediate, Upper-intermediate and Advanced

These courses will prepare you for direct entry to Swinburne. They focus on the language, critical thinking and academic skills required in your further studies. Advanced-level classes focus on the language skills specific to your study area, including business, design, engineering and information technology.

You will develop skills in:

- academic writing
- academic reading, listening and note-taking
- communication and interaction in the academic environment
- oral presentations and seminar discussions
- research and library techniques.

## Intensive English

### Advanced

If you have already achieved the English language requirements for your course, we recommend that you undertake this optional five-week intensive program. It is designed to refresh your English language skills and prepare you for academic transition in Australia before you begin your course.

## English Placement Test

You will need to take an English Placement Test before starting your ELICOS program. The test enables Swinburne College to assess your English language skills and place you at the appropriate level.

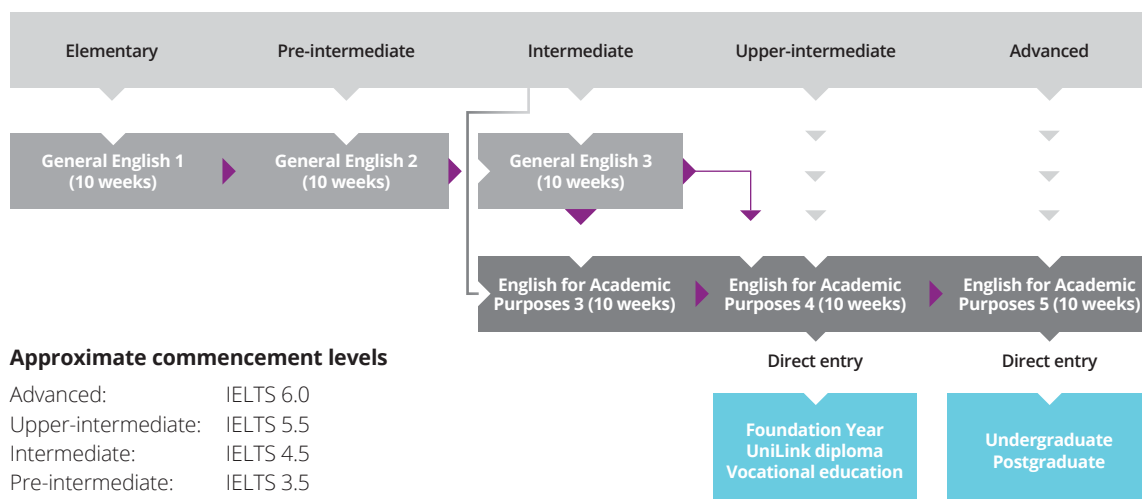
## Direct entry to Swinburne

Students who successfully complete English for Academic Purposes to the required level can progress directly to their Swinburne course. Entry is subject to achieving the required results and all other conditions. English language requirements and other prerequisites for individual courses can vary.

Visit [www.swinburne.edu.au/study/options/find](http://www.swinburne.edu.au/study/options/find) for specific course prerequisites.

## English language course structure

- Course entry  
► Pathway opportunity



### Approximate commencement levels

Advanced:	IELTS 6.0
Upper-intermediate:	IELTS 5.5
Intermediate:	IELTS 4.5
Pre-intermediate:	IELTS 3.5
Elementary:	IELTS 3.0

For equivalent IELTS scores (e.g. TOEFL) visit [www.swinburne.edu.au/international/english](http://www.swinburne.edu.au/international/english)



# OUR COURSES

Business and Management	18
Design	22
Engineering	23
Health	25
Information and Communication Technologies	26
Media and Communications	28
Psychology	29
Science	30
Swinburne courses overseas	39

# Business and Management

[swinburne.edu.au/business](http://swinburne.edu.au/business)

Course	Duration	Topics covered	Accreditation and industry engagement
<b>ACCOUNTING</b>			
<b>Master of Practising Accounting</b> Specialise in accounting for professional recognition. Learn skills relevant to many areas of professional interest, including marketing, economic forecasting, finance and engineering. Gain an understanding of how to use resources (money) to the best advantage.	2 years	<ul style="list-style-type: none"> <li>Financial management and reporting</li> <li>Accounting and taxation principles</li> <li>Corporate finance and economics</li> </ul>	
<b>Master of Professional Accounting</b> <b>Graduate Diploma of Professional Accounting</b> <b>Graduate Certificate of Professional Accounting</b> Specialise in accounting for professional recognition. Gain the technical, practical, analytical and creative skills required to deal with accounting and finance issues in planning and decision-making.	1.5 years 1 year 6 months	<ul style="list-style-type: none"> <li>Financial management and reporting</li> <li>Accounting and taxation principles</li> <li>Corporate finance and economics</li> </ul>	
<b>Master of Professional Accounting Global Leadership Program</b> Gain two professionally recognised master degrees in two years from two high-ranking institutions: Swinburne and Northeastern University in Boston, USA. Learn the skills and knowledge needed to meet the challenges of a continually diversifying workforce where tasks are becoming increasingly complex.	2 years	<ul style="list-style-type: none"> <li>Financial management and reporting</li> <li>Accounting and taxation principles</li> <li>Corporate finance and economics</li> <li>Leadership skills and theory</li> </ul>	The program is delivered in Melbourne via a combination of face-to-face and online delivery modes. Students also have the opportunity to undertake part of the program at Northeastern, subject to application and visa requirements.
<b>BUSINESS ADMINISTRATION</b>			
<b>Master of Business Administration (Advanced)</b> <b>Master of Business Administration</b> <b>Graduate Certificate of Business Administration</b> Designed for experienced managers, gain skills in leadership, strategic thinking, innovation and social responsibility. The focus of this course is on the development of solutions to current and emerging business scenarios.	2 years 1.5 year 6 months	<ul style="list-style-type: none"> <li>Leadership and management</li> <li>Accounting and finance</li> <li>Entrepreneurship and innovation</li> </ul>	<b>Research:</b> The Master of Business Administration (Advanced) includes a specialised research project.
<b>Master of Business Administration (International)</b> <b>Graduate Diploma of Business Administration (International)</b> <b>Graduate Certificate of Business Administration (International)</b> Designed for new and future managers intending to pursue a global career. Gain skills across key managerial functions including financing, marketing, business development and corporate governance.	2 years 1 year 6 months	<ul style="list-style-type: none"> <li>Leadership and management</li> <li>Accounting and finance</li> <li>Entrepreneurship and innovation</li> </ul>	



Course	Duration	Topics covered	Accreditation and industry engagement
<b>Master of Business Administration/Master of Entrepreneurship and Innovation</b> Develop capabilities in engaging and dealing with uncertainty, change and turbulence in the environments in which organisations operate. Gain skills in strategy, leadership, innovation, and ethical and social responsibility. Acquire an understanding of the hurdles, opportunities and fundamental requirements that must be in place in order to realise your vision for a new, or renewed, organisation.	2 years	<ul style="list-style-type: none"> <li>Leadership and management</li> <li>Accounting and finance</li> <li>Entrepreneurship and innovation across a range of settings</li> </ul>	
<b>Master of Business Administration/Master of Strategic Foresight</b> Develop your capability to engage and deal with uncertainty, change and turbulence in the environments in which organisations operate. Gain skills in strategy, leadership, innovation and ethical and social responsibility. Acquire knowledge in futures studies and foresight work, and learn about a range of applied implementation options.	2 years	<ul style="list-style-type: none"> <li>Leadership and management</li> <li>Accounting and finance</li> <li>Entrepreneurship and innovation</li> <li>Foresight methodology</li> </ul>	Graduates may be eligible for membership of the Association of Professional Futurists and World Futures Studies Federation.
<b>BUSINESS MANAGEMENT</b>			
<b>Master of Business Management (Professional)</b> <b>Master of Business Management (Advanced)</b> <b>Master of Business Management</b> <b>Graduate Diploma of Business Management</b> <b>Graduate Certificate of Business Management</b> Gain an understanding of global, national and local pressures on business and learn how to respond effectively to those pressures. Learn how to develop dynamic and strategic responses to the complex internal and external challenges in organisations.	2 years 2 years 1.5 years 1 year 6 months	<ul style="list-style-type: none"> <li>Leadership and management</li> <li>Strategy across a range of settings</li> <li>Stakeholder management</li> </ul>	<b>Industry project:</b> The Master of Business Management (Professional) includes an industry-linked project. <b>Research:</b> The Master of Business Management (Advanced) includes a specialised research project.
<b>Graduate Certificate of Business Management (Executive Administration)</b> Develop high-level knowledge and skills in the professional area of executive administration.	6 months	<ul style="list-style-type: none"> <li>Administration skills</li> <li>Project management skills</li> <li>Stakeholder communication</li> </ul>	Graduates may be eligible for membership of the Australian Institute of Office Professionals.
<b>Graduate Certificate of Management Studies</b> Gain a grounding in business and management. Learn about the integrated nature of business management. Develop skills in research, analysis, critical thinking and presentation.	6 months	<ul style="list-style-type: none"> <li>Management</li> <li>Leadership</li> <li>Innovation in business</li> </ul>	
<b>ENTREPRENEURSHIP AND INNOVATION</b>			
<b>Master of Entrepreneurship and Innovation (Professional)</b> <b>Master of Entrepreneurship and Innovation (Advanced)</b> <b>Master of Entrepreneurship and Innovation</b> <b>Graduate Certificate of Entrepreneurship and Innovation</b> Gain an understanding of the hurdles, opportunities and fundamental requirements that must be in place in order to realise your vision for a new, or renewed, organisation. Discover the specific needs of entrepreneurs seeking to successfully commercialise an idea. Work on projects that have direct relevance to your work.	2 years 2 years 1.5 years 6 months	<ul style="list-style-type: none"> <li>Entrepreneurship and innovation across a range of settings</li> <li>Critical thinking and problem solving</li> <li>Business strategy</li> <li>Finance</li> </ul>	<b>Industry project:</b> The Master of Entrepreneurship and Innovation (Professional) includes an industry-linked project. <b>Research:</b> The Master of Entrepreneurship and Innovation (Advanced) includes a specialised research project.
<b>FINANCE AND BANKING</b>			
<b>Master of Finance and Banking (Professional)</b> <b>Master of Finance and Banking (Advanced)</b> <b>Master of Finance and Banking</b> <b>Graduate Certificate of Finance and Banking</b> Gain specialised knowledge in modern finance. Learn about the latest developments in the fields of finance and banking, with particular emphasis on international trends in the financial sector.	2 years 2 years 1.5 years 6 months	<ul style="list-style-type: none"> <li>Accounting</li> <li>Financial planning and management</li> <li>International finance</li> <li>Economics</li> </ul>	<b>Industry project:</b> The Master of Finance and Banking (Professional) includes an industry-linked project. <b>Research:</b> The Master of Finance and Banking (Advanced) includes a specialised research project.

# Business and Management

Course	Duration	Topics covered	Accreditation and industry engagement
<b>Master of Finance and Banking <i>Global Leadership Program</i></b> Gain two professionally recognised master degrees in two years from two high-ranking institutions: Swinburne and Northeastern University in Boston, USA. Learn the skills and knowledge needed to meet the challenges of a continually diversifying workforce where tasks are becoming increasingly complex.	2 years	<ul style="list-style-type: none"> <li>Accounting</li> <li>Financial planning and management</li> <li>International finance</li> <li>Leadership skills and theory</li> </ul>	The program is delivered in Melbourne via a combination of face-to-face and online delivery modes. Students also have the opportunity to undertake part of the program at Northeastern, subject to application and visa requirements.
<b>HUMAN RESOURCE MANAGEMENT</b>			
<b>Master of Commerce (Human Resource Management) (Professional)</b>	2 years	<ul style="list-style-type: none"> <li>Human resource management strategy</li> </ul>	<b>Industry project:</b> The Master of Commerce (Human Resource Management) (Professional) includes an industry-linked project.  <b>Research:</b> The Master of Commerce (Human Resource Management) (Advanced) includes a specialised research project.
<b>Master of Commerce (Human Resource Management) (Advanced)</b>	2 years	<ul style="list-style-type: none"> <li>Professional communication</li> <li>Ethics</li> </ul>	
<b>Master of Commerce (Human Resource Management)</b>	1.5 years	<ul style="list-style-type: none"> <li>Change management</li> </ul>	
<b>Graduate Diploma of Commerce (Human Resource Management)</b>	1 year		
<b>Graduate Certificate of Commerce (Human Resource Management)</b>	6 months		
Gain specialised human resource management and business knowledge. Develop skills in organisation behaviour, business strategy and entrepreneurial thinking. Gain the skills and knowledge to become a strategically astute, outcome-focused, innovative and entrepreneurial HR practitioner.			
<b>INTERNATIONAL BUSINESS</b>			
<b>Master of International Business (Professional)</b>	2 years	<ul style="list-style-type: none"> <li>International business culture, operations and practice</li> <li>International trade theory and practice</li> <li>Business strategy</li> </ul>	<b>Industry project:</b> The Master of International Business (Professional) includes an industry-linked project.  <b>Research:</b> The Master of International Business (Advanced) includes a specialised research project.
<b>Master of International Business (Advanced)</b>	2 years		
<b>Master of International Business</b>	1.5 years		
<b>Graduate Diploma of International Business</b>	1 year		
<b>Graduate Certificate of International Business</b>	6 months		
Gain specialised knowledge in international business. Learn how to recognise and take advantage of the opportunities – and to deal with the challenges – inherent in international business environments.			
<b>Master of International Business <i>Global Leadership Program</i></b>	2 years	<ul style="list-style-type: none"> <li>International business culture, operations and practice</li> <li>International trade theory and practice</li> <li>Business strategy</li> <li>Leadership skills and theory</li> </ul>	The program is delivered in Melbourne via a combination of face-to-face and online delivery modes. Students also have the opportunity to undertake part of the program at Northeastern, subject to application and visa requirements.
<b>Graduate Diploma of International Business <i>Global Leadership Program</i></b>	1 year		
Gain two professionally recognised master degrees in two years from two high-ranking institutions: Swinburne and Northeastern University in Boston, USA. Learn the skills and knowledge needed to meet the challenges of a continually diversifying workforce where tasks are becoming increasingly complex.			
<b>MARKETING</b>			
<b>Master of Marketing (Professional)</b>	2 years	<ul style="list-style-type: none"> <li>Marketing strategy</li> <li>Market research and analysis</li> <li>Digital marketing</li> <li>Branding</li> </ul>	<b>Industry project:</b> The Master of Marketing (Professional) includes an industry-linked project.  <b>Research:</b> The Master of Marketing (Advanced) includes a specialised research project.
<b>Master of Marketing (Advanced)</b>	2 years		
<b>Master of Marketing</b>	1.5 years		
<b>Graduate Diploma of Marketing</b>	1 year		
<b>Graduate Certificate of Marketing</b>	6 months		
Gain specialist knowledge in all aspects of marketing. Learn how marketing is relevant to all areas of business life. Gain an understanding of how to use available resources to their advantage in a changing environment.			
<b>Master of Marketing <i>Global Leadership Program</i></b>	2 years	<ul style="list-style-type: none"> <li>Marketing strategy</li> <li>Market research and analysis</li> <li>Digital marketing</li> <li>Branding</li> <li>Leadership skills and theory</li> </ul>	The program is delivered in Melbourne via a combination of face-to-face and online delivery modes. Students also have the opportunity to undertake part of the program at Northeastern, subject to application and visa requirements.
Gain two professionally recognised master degrees in two years from two high-ranking institutions: Swinburne and Northeastern University in Boston, USA. Learn the skills and knowledge needed to meet the challenges of a continually diversifying workforce where tasks are becoming increasingly complex.			

Course	Duration	Topics covered	Accreditation and industry engagement
SOCIAL INVESTMENT AND PHILANTHROPY			
Master of Social Investment and Philanthropy (Professional)	2 years	<ul style="list-style-type: none"><li>• Corporate philanthropy</li><li>• Entrepreneurial philanthropy</li><li>• Fundraising</li><li>• Leadership</li></ul>	
Master of Social Investment and Philanthropy	1.5 years		
Gain a sound theoretical and practical foundation for the successful practice of social investment within social enterprise. Develop skills in policy and applied research, conceptual development and technical management to provide and manage grants and/or raise funds for the wellbeing of citizens.			
STRATEGIC FORESIGHT			
Master of Strategic Foresight	1.5 years	<ul style="list-style-type: none"><li>• Foresight methodology</li><li>• Leadership</li><li>• Management</li><li>• Innovation in business</li></ul>	Graduates may be eligible for membership of the Association of Professional Futurists and World Futures Studies Federation.
Develop a sound foundation for the successful practice of strategic foresight in a range of fields. Gain knowledge in futures studies and foresight work, and learn about a range of applied implementation options.			



*My dream is to work in the Indian Ministry of External Affairs and assist in raising my country's profile and rebranding it as a strong leader in international affairs. When I heard that I could do a degree in leadership along with marketing, I immediately knew that this was the program that I wanted to do.*

**Arijeet**

Studying marketing and global leadership



# Design

[swinburne.edu.au/design](http://swinburne.edu.au/design)

Course	Duration	Topics covered	Accreditation and industry engagement
DESIGN			
Master of Design	2 years	<ul style="list-style-type: none"><li>• Design strategy</li><li>• Design research</li><li>• Digital design</li><li>• Entrepreneurship</li></ul>	Students have the option to participate in study tours and projects with the Swinburne Design Factory. Graduates may be eligible for membership of the Design Institute of Australia, Australian Graphic Design Association and Design Management Institute.
Graduate Diploma of Design	1 year		
Graduate Certificate of Design	6 months		
Enhance your expertise within a chosen design field, including visual communication design, industrial design, interior architecture and digital media design. Broaden your skills and knowledge in design practice, 3D printing, interaction design, design management, computer-aided design and visualisation tools. Work in a project-based, studio environment.			
DESIGN STRATEGY AND INNOVATION			
Master of Design Strategy and Innovation	1.5 years	<ul style="list-style-type: none"><li>• Design strategy</li><li>• Design management</li><li>• Sustainability in design</li></ul>	Students have the option to participate in study tours and projects with the Swinburne Design Factory. Graduates may be eligible for membership of the Design Institute of Australia, Australian Graphic Design Association and Design Management Institute.
Graduate Diploma of Design Strategy and Innovation	1 year		
Graduate Certificate of Design Strategy and Innovation	6 months		
Combine study in design thinking, design management and strategy, systems and complexity thinking, innovation processes, futures forecasting, leadership and advanced sustainability practice. Learn how to create, lead and manage new products, systems and services that have a sustainable impact on the economy, society and the environment.			

# Engineering

[swinburne.edu.au/engineering](http://swinburne.edu.au/engineering)

Course	Duration	Topics covered	Rankings, accreditation and industry engagement
ADVANCED MANUFACTURING TECHNOLOGY			
Master of Engineering Science (Advanced Manufacturing Technology)	2 years	<ul style="list-style-type: none"><li>• Manufacturing processes</li><li>• Sustainability</li><li>• Management</li><li>• Mechatronics and nanofabrication</li></ul>	
Master of Engineering (Advanced Manufacturing Technology)	1.5 years		
Graduate Diploma of Engineering (Advanced Manufacturing Technology)	1 year		
Graduate Certificate of Engineering (Advanced Manufacturing Technology)	6 months		
Gain an understanding of advanced and emerging manufacturing technologies. Learn the skills needed to direct the design, development and implementation of specific technologies and/or processes in modern global and local industries.			
Master of Engineering (Advanced Manufacturing Technology)/Master of Entrepreneurship and Innovation	2 years	<ul style="list-style-type: none"><li>• Manufacturing processes</li><li>• Sustainability</li><li>• Management</li><li>• Entrepreneurship and innovation across a range of settings</li></ul>	
Gain an understanding of advanced and emerging manufacturing technologies. Learn the skills needed to direct the design, development and implementation of specific technologies and/or processes in modern global and local industries.			
Gain an understanding of the hurdles, opportunities and fundamental requirements that must be in place in order to realise your vision for a new, or renewed, organisation.			
CIVIL ENGINEERING			
Master of Engineering Science (Civil)	2 years	<ul style="list-style-type: none"><li>• Planning and management</li><li>• Sustainability</li><li>• Project management</li></ul>	Top 200 – Civil and Structural Engineering, 2016 QS World University Rankings by Subject.  “Above world standard” – Civil Engineering, Excellence in Research for Australia 2015.
Master of Engineering (Civil)	1.5 years		
Graduate Diploma of Engineering (Civil)	1 year		
Graduate Certificate of Engineering (Civil)	6 months		
Gain advanced theoretical and practical knowledge about the design, procurement and asset management aspects of civil infrastructure projects. Develop a comprehensive understanding of the issues and challenges associated with the civil engineering industry, including codes of practice; sustainability issues; environmental impacts; and financial, legal, project-management and risk considerations.			
Master of Engineering (Civil)/Master of Construction Management	2 years	<ul style="list-style-type: none"><li>• Planning and management</li><li>• Sustainability</li><li>• Project management</li><li>• Operations</li></ul>	Top 200 – Civil and Structural Engineering, 2016 QS World University Rankings by Subject.  “Above world standard” – Civil Engineering, Excellence in Research for Australia 2015.
Gain advanced theoretical and practical knowledge about the design, procurement and asset management aspects of civil infrastructure projects. Develop a comprehensive understanding of the issues and challenges associated with the civil engineering industry. Learn management and engineering techniques in the fields of construction, building and maintenance.			

# Engineering

Course	Duration	Topics covered	Rankings, accreditation and industry engagement
CIVIL ENGINEERING (CONTINUED)			
<b>Master of Engineering (Civil)/Master of Entrepreneurship and Innovation</b> Gain advanced theoretical and practical knowledge about the design, procurement and asset management aspects of civil infrastructure projects. Develop a comprehensive understanding of the issues and challenges associated with the civil engineering industry. Gain an understanding of the hurdles, opportunities and fundamental requirements that must be in place in order to realise your vision for a new, or renewed, organisation.	2 years	<ul style="list-style-type: none"><li>• Planning and management</li><li>• Sustainability</li><li>• Project management</li><li>• Entrepreneurship and innovation across a range of settings</li></ul>	Top 200 – Civil and Structural Engineering, 2016 QS World University Rankings by Subject. “Above world standard” – Civil Engineering, Excellence in Research for Australia 2015.
CONSTRUCTION MANAGEMENT			
<b>Master of Construction and Infrastructure Management</b>	2 years	<ul style="list-style-type: none"><li>• Project management</li><li>• Operations</li><li>• Sustainability</li><li>• Planning and management</li></ul>	
<b>Master of Construction Management</b>	1.5 years		
<b>Graduate Diploma of Construction Management</b>	1 year		
<b>Graduate Certificate in Construction Management</b>	6 months		
Learn management and engineering techniques in the fields of construction, building and maintenance. Gain knowledge and skills in procurement and project delivery, resource planning and management, project costing, health and safety, and risk management. Learn about the environmental, financial, legal and contractual considerations associated with project-based industries.			
ELECTRICAL AND ELECTRONIC ENGINEERING			
<b>Master of Engineering Science (Electrical and Electronic)</b>	2 years	<ul style="list-style-type: none"><li>• Power systems design and analysis</li><li>• Problem solving</li><li>• Planning and management</li></ul>	“Above world standard” – Electrical and Electronic Engineering, Excellence in Research for Australia 2015.
<b>Master of Engineering (Electrical and Electronic)</b>	1.5 years		
<b>Graduate Diploma of Engineering (Electrical and Electronic)</b>	1 year		
<b>Graduate Certificate in Engineering (Electrical and Electronic)</b>	6 months		
Study four major areas of electrical and electronic engineering: power systems design, safety and control; signal processing; microelectronics; and control systems. Develop entrepreneurial thinking to foster innovation in your business, workplace or community.			
<b>Master of Engineering (Electrical and Electronic)/Master of Entrepreneurship and Innovation</b> Study four major areas of electrical and electronic engineering: power systems design, safety and control; signal processing; microelectronics; and control systems. Develop entrepreneurial thinking to foster innovation in your business, workplace or community. Gain an understanding of the hurdles, opportunities and fundamental requirements that must be in place in order to realise your vision for a new, or renewed, organisation.	2 years	<ul style="list-style-type: none"><li>• Power systems design and analysis</li><li>• Problem solving</li><li>• Planning and management</li><li>• Entrepreneurship and innovation across a range of settings</li></ul>	“Above world standard” – Electrical and Electronic Engineering, Excellence in Research for Australia 2015.
PROFESSIONAL ENGINEERING			
<b>Master of Professional Engineering</b> Develop skills in professional management, communication, and research methods and principles in the engineering discipline. Undertake research and project work. Apply your knowledge and skills to industry problems through a professional industry project. Enhance your awareness of industry and gain valuable networking opportunities.	2 years	<ul style="list-style-type: none"><li>• Project management</li><li>• Sustainability</li><li>• Risk management</li><li>• Research methodology</li></ul>	Undertake an industry project and attend employer networking events.
STRUCTURAL ENGINEERING			
<b>Master of Engineering Science (Civil Structures)</b>	2 years	<ul style="list-style-type: none"><li>• Building and civil structure maintenance</li><li>• Sustainability</li><li>• Infrastructure modelling</li><li>• Building design</li></ul>	Top 200 – Civil and Structural Engineering, 2016 QS World University Rankings by Subject.
<b>Master of Engineering (Civil Structures)</b>	1.5 years		
<b>Graduate Diploma of Engineering (Civil Structures)</b>	1 year		
<b>Graduate Certificate of Engineering (Civil Structures)</b>	6 months		
Gain advanced discipline-specific knowledge and skills for the design and analysis of building and civil structures, as well as the advanced uses of both ordinary and new construction materials. Learn skills relevant to professional practice in all sizes of organisations, including public sector, private sector and non-profit.			



# Health

[swinburne.edu.au/health](http://swinburne.edu.au/health)

Course	Duration	Topics covered	Accreditation and industry engagement
<b>OCCUPATIONAL THERAPY</b>			
<b>Master of Occupational Therapy</b> Gain skills and knowledge in treating clients who may have neurological, musculoskeletal or mental health issues. Undertake problem-based learning: a case scenario is presented that allows for self-directed learning in teams.	2 years	Enabling participation: <ul style="list-style-type: none"><li>• mental health</li><li>• musculoskeletal and neurological</li><li>• children</li><li>• youth.</li></ul>	Complete three work placements in community- or hospital-focused agencies that offer short- and long-term therapy. Complete a project-based unit in the Swinburne Design Factory and gain industry experience by developing innovative solutions to problems provided by disability service partners.

# Information and Communication Technologies

[swinburne.edu.au/ict](http://swinburne.edu.au/ict)

Course	Duration	Topics covered	Accreditation and industry engagement
INFORMATION TECHNOLOGY			
Master of Information Technology	2 years	<ul style="list-style-type: none"><li>• Business information systems</li><li>• Working with data</li><li>• Programming and applications</li><li>• Project management</li></ul>	This program is professionally accredited by the Australian Computer Society.
Graduate Diploma of Information Technology	1.5 years		
Graduate Certificate of Information Technology	1 year		
Gain the knowledge and skills required to design, develop and maintain complex systems using state-of-the-art technologies and methodologies. Develop advanced specialist skills in areas such as networks, software development, and information systems analysis and management. Apply your skills through industry-related project work, including industry-linked projects for real clients.			
INFORMATION TECHNOLOGY BUSINESS ANALYSIS			
Master of Information Technology Business Analysis	2 years	<ul style="list-style-type: none"><li>• Business information systems</li><li>• Working with data</li><li>• Project management</li><li>• Business analysis</li></ul>	
Graduate Diploma of Information Technology Business Analysis	1.5 years		
Graduate Certificate in Information Technology Business Analysis	1 year		
Discover a broad and balanced set of information systems and business disciplines. Gain the skills to effectively deal with and deliver value to multiple areas of technology and business. Undertake studies in data and information modelling, process redesign and modelling, and requirements elicitation and analysis.			
INFORMATION TECHNOLOGY PROJECT MANAGEMENT			
Master of Information Technology Project Management	2 years	<ul style="list-style-type: none"><li>• Strategy</li><li>• Stakeholder management</li><li>• Business information systems</li><li>• Project management</li></ul>	This program is professionally accredited by the Australian Computer Society.
Graduate Diploma of Information Technology Project Management	1.5 years		
Graduate Certificate of Information Technology Project Management	1 year		
Develop the relevant knowledge, skills and capabilities to effectively manage information systems and information technology projects. Learn about project portfolios, strategy and alignment, managing change, relationship/alliance building, management of multiple vendors, managing information systems risk and complexity, and understanding the value of information systems and information technology investments in organisations. Apply information technology project management skills and knowledge in a range of contexts.			

Course	Duration	Topics covered	Accreditation and industry engagement
INFORMATION SYSTEMS MANAGEMENT			
Master of Information Systems Management	2 years	<ul style="list-style-type: none"><li>• Business information systems</li><li>• Working with data</li><li>• Project management</li><li>• Delivering value in information systems</li></ul>	This program is professionally accredited by the Australian Computer Society.
Graduate Diploma of Information Systems Management	1.5 years		
Graduate Certificate of Information Systems Management	1 year		
Develop knowledge, skills and capabilities in information systems and information technology management. Learn how to optimise business value through the management of information systems and its related risks. Discover current approaches to technology management in and between contemporary organisations.			
Master of Information Systems Management/ Master of Business Administration	2 years	<ul style="list-style-type: none"><li>• Business information systems</li><li>• Working with data</li><li>• Delivering value in information systems</li><li>• Leadership and management</li></ul>	This program is professionally accredited by the Australian Computer Society.
Develop knowledge, skills and capabilities in information systems and information technology management. Learn how to optimise business value through the management of information systems and its related risks. Discover current approaches to technology management in and between contemporary organisations. Gain skills in strategy, leadership, innovation and ethical and social responsibility.			
NETWORKS			
Master of Engineering Science (Network Systems and Telecommunications)	2 years	<ul style="list-style-type: none"><li>• Network administration and programming</li><li>• Network design and management</li><li>• Wireless and mobile networks</li><li>• Digital security</li></ul>	This program is professionally accredited by the Australian Computer Society.
Master of Science (Network Systems)	2 years		The program prepares students for the Cisco Certified Network Associate and the Microsoft Certified Professional certification exams. Preparation for the Cisco Certified Network Professional programs is also available.
Undertake advanced studies in telecommunication systems and the management of networks. Develop theoretical knowledge and practical skills related to network design, the management and service provision of private and public network systems, wireless and broadband technologies, and the security and protection of networked and computer systems.			
PROFESSIONAL COMPUTING			
Master of Information Technology (Professional Computing)	2 years	<ul style="list-style-type: none"><li>• Software development</li><li>• Information systems analysis and management</li><li>• Network management</li><li>• Project management</li></ul>	This program is professionally accredited by the Australian Computer Society.
Gain theoretical knowledge and practical skills related to the design, construction, operation, support and maintenance of information technology solutions. Learn state-of-the-art techniques used in the design and construction of IT solutions, as well as the research skills needed to assess the effectiveness of a solution or technology.			



*I recently completed a three-month internship at the Melbourne office of a leading provider of IT services to educational institutions. This internship was extremely rewarding because it not only enabled me to apply the knowledge that I had gained from my course but it also boosted my confidence in a professional setting. It was a valuable learning experience that has already helped me to land a job in my chosen field.*

**Emad**

Studying network systems



# Media and Communications

[swinburne.edu.au/media](http://swinburne.edu.au/media)

Course	Duration	Topics covered	Rankings, accreditation and industry engagement
MEDIA AND COMMUNICATIONS			
Master of Arts (Media and Communications)	2 years	<ul style="list-style-type: none"><li>• New media</li><li>• Media production and practice</li><li>• Global media</li><li>• Media policy</li></ul>	Top 200 – Communication and Media Studies, 2016 QS World University Rankings by Subject.  “Above world standard” – Communication and Media Studies, Excellence in Research for Australia 2015.
Graduate Diploma of Arts (Media and Communications)	1 year		
Graduate Certificate of Arts (Media and Communications)	6 months		
Develop skills applicable to a range of media activities. Undertake practical learning and gain workplace experience by developing projects for real clients. Choose to focus on studies in journalism, digital content production or media studies.			
MULTIMEDIA			
Master of Multimedia	2 years	<ul style="list-style-type: none"><li>• Multimedia technology</li><li>• Digital editing and production</li><li>• User experience design</li><li>• Professional communication</li></ul>	
Graduate Diploma of Multimedia	1 year		
Graduate Certificate of Multimedia	6 months		
Learn specialised technical and creative skills as well as critical reflective skills. Gain knowledge in theories and methodologies relevant to current industry professional practice and research.			

# Psychology

[swinburne.edu.au/psychology](http://swinburne.edu.au/psychology)

Course	Duration	Topics covered	Rankings, accreditation and industry engagement
<b>Doctor of Philosophy (Clinical Psychology)</b> Combine intensive high-level research training with training in the professional skills of clinical psychology. Develop advanced knowledge, skills and experience in psychopathology, assessment and therapeutic interventions for adults and children suffering from clinical disorders.	4 years	<ul style="list-style-type: none"> <li>• Counselling theory and practice</li> <li>• Psychological assessment</li> <li>• Psychopathology</li> <li>• Research methodology</li> </ul>	Graduates may be eligible for membership of the Australian Psychological Society (APS) and for general registration as a psychologist with the Psychology Board of Australia (PBA). After an additional 18 months of appropriate supervised practice, graduates may also be eligible for membership of the APS College of Clinical Psychologists and for clinical psychology area of practice endorsement with PBA.  "Above world standard" – Psychology, Excellence in Research for Australia 2015.
<b>Doctor of Psychology (Clinical and Forensic Psychology)</b> Combine intensive high-level research training in clinical psychology and training in forensic psychology through coursework, clinical placements and a research thesis concerned with clinical forensic psychology. Gain training to become a highly qualified researcher and clinician to prepare for work in clinical and forensic psychology domains.	4 years	<ul style="list-style-type: none"> <li>• Counselling theory and practice</li> <li>• Psychological assessment</li> <li>• Forensic psychology</li> <li>• Research methodology</li> </ul>	Graduates may be eligible for registration as a psychologist with the Australian Practitioners Regulation Agency and for practice endorsements in the areas of clinical and forensic psychology. Graduates may also be eligible for membership of the Australian Psychological Society Colleges of Clinical and Forensic Psychologists.  "Above world standard" – Psychology, Excellence in Research for Australia 2015.

# Science

[swinburne.edu.au/science](http://swinburne.edu.au/science)

Course	Duration	Topics covered	Accreditation and industry engagement
<b>BIOTECHNOLOGY</b>			
<b>Master of Science (Biotechnology)</b>	2 years	<ul style="list-style-type: none"><li>• Environmental biotechnology</li><li>• Genes and molecular biology</li><li>• Scientific problem solving</li><li>• Research methodology</li></ul>	Graduates may be eligible for membership of AusBiotech Ltd, Genetics Society of Australia, Australian Society of Biochemistry and Molecular Biology, and Australian Society for Microbiology.
<b>Graduate Diploma of Science (Biotechnology)</b> Gain an in-depth understanding of the fundamental principles of biotechnology, including molecular biology; biochemistry; microbiology; and medical, industrial, forensic, agricultural and environmental biotechnology. Study to your desired level and choose to focus on your field of interest.	1 year		



# Postgraduate programs

## AT A GLANCE

All programs are delivered at the Hawthorn campus.

All programs require IELTS overall band of 6.5 (Academic Module) with no individual band below 6.0, or equivalent, unless otherwise stated; see page 40 for details.

Programs and entry requirements	Duration	Intake	2017 Indicative course fee*	Page
<b>BUSINESS AND MANAGEMENT</b>				
<b>Master of Business Administration</b> A recognised bachelor degree in business plus at least three years' work experience in a management role, or successful completion of Graduate Certificate of Business Administration.	1.5 years	Feb, Sep	A\$28,800 annual	18
<b>Master of Business Administration (Advanced)</b> A recognised bachelor degree in business plus at least three years' work experience in a management role, or successful completion of Graduate Certificate of Business Administration.	2 years	Feb, Sep	A\$28,800 annual	18
<b>Master of Business Administration (International)</b> A recognised bachelor degree with a credit average.	2 years	Feb, Jul	A\$28,800 annual	18
<b>Master of Business Administration/Master of Entrepreneurship and Innovation</b> A recognised bachelor degree in business plus at least three years' work experience in a management role, or successful completion of Graduate Certificate of Business Administration or Graduate Certificate of Entrepreneurship and Innovation.	2 years	Feb, Jul, Sep	A\$28,800 annual	19
<b>Master of Business Administration/Master of Strategic Foresight</b> A recognised bachelor degree in business plus at least three years' work experience in a management role, or successful completion of Graduate Certificate of Business Administration or Graduate Certificate of Management Studies.	2 years	Feb, Sep	A\$28,800 annual	19
<b>Master of Business Management</b> A recognised bachelor degree in business plus at least 12 months' relevant work experience, or at least four years' relevant work experience, or successful completion of Graduate Certificate of Business Management.	1.5 years	Feb, Jul	A\$26,480 annual	19
<b>Master of Business Management (Advanced)</b> A recognised bachelor degree in business plus at least 12 months' relevant work experience, or successful completion of Graduate Certificate of Business Management.	2 years	Feb, Jul	A\$26,480 annual	19
<b>Master of Business Management (Professional)</b> A recognised bachelor degree in business plus at least 12 months' relevant work experience, or successful completion of Graduate Certificate of Business Management.	2 years	Feb, Jul	A\$29,900 annual	19
<b>Master of Commerce (Human Resource Management)</b> A recognised bachelor degree in business, or at least five years' relevant work experience, or successful completion of Graduate Certificate of Commerce (Human Resource Management).	2 years	Feb, Jul	A\$26,480 annual	20
<b>Master of Commerce (Human Resource Management) (Advanced)</b> A recognised bachelor degree in business, or at least five years' relevant work experience, or successful completion of Graduate Certificate of Commerce (Human Resource Management).	1.5 years	Feb, Jul	A\$26,480 annual	20
<b>Master of Commerce (Human Resource Management) (Professional)</b> A recognised bachelor degree in business, or at least five years' relevant work experience, or successful completion of Graduate Certificate of Commerce (Human Resource Management).	2 years	Feb, Jul	A\$29,900 annual	20
<b>Master of Entrepreneurship and Innovation</b> A recognised bachelor degree in business plus at least three years' relevant work experience, or a recognised Bachelor of Engineering (Honours) plus at least three years' relevant work experience, or successful completion of Graduate Certificate of Entrepreneurship and Innovation.	1.5 years	Feb, Jul	A\$27,700 annual	19
<b>Master of Entrepreneurship and Innovation (Advanced)</b> A recognised bachelor degree in business plus at least three years' relevant work experience, or a recognised Bachelor of Engineering (Honours) plus at least two years' relevant work experience, or successful completion of Graduate Certificate of Entrepreneurship and Innovation.	2 years	Feb, Jul	A\$27,700 annual	19

# Postgraduate programs

## AT A GLANCE (CONTINUED)

Programs and entry requirements	Duration	Intake	2017 Indicative course fee*	Page
<b>BUSINESS AND MANAGEMENT (CONTINUED)</b>				
<b>Master of Entrepreneurship and Innovation (Professional)</b> A recognised bachelor degree in business plus at least three years' relevant work experience, or a recognised Bachelor of Engineering (Honours) plus at least three years' relevant work experience, or successful completion of Graduate Certificate of Entrepreneurship and Innovation.	2 years	Feb, Jul	A\$29,900 annual	19
<b>Master of Finance and Banking</b> A recognised bachelor degree in business, or successful completion of Graduate Certificate of Finance and Banking.	1.5 years	Feb, Jul	A\$26,480 annual	19
<b>Master of Finance and Banking (Advanced)</b> A recognised bachelor degree in business, or successful completion of Graduate Certificate of Finance and Banking.	2 years	Feb, Jul	A\$26,480 annual	19
<b>Master of Finance and Banking (Professional)</b> A recognised bachelor degree in business, or successful completion of Graduate Certificate of Finance and Banking.	2 years	Feb, Jul	A\$29,900 annual	19
<b>Master of Finance and Banking <i>Global Leadership Program</i></b> A recognised bachelor degree.	2 years	Feb, Jul	A\$29,200 annual	20
<b>Master of International Business</b> A recognised bachelor degree in business, or successful completion of Graduate Certificate of International Business.	1.5 years	Feb, Jul	A\$26,480 annual	20
<b>Master of International Business (Advanced)</b> A recognised bachelor degree in business, or successful completion of Graduate Certificate of International Business.	2 years	Feb, Jul	A\$26,480 annual	20
<b>Master of International Business (Professional)</b> A recognised bachelor degree in business, or successful completion of Graduate Certificate of International Business.	2 years	Feb, Jul	A\$29,900 annual	20
<b>Master of International Business <i>Global Leadership Program</i></b> A recognised bachelor degree.	2 years	Feb, Jul	A\$29,200 annual	20
<b>Master of Marketing</b> A recognised bachelor degree in business, or successful completion of Graduate Certificate of Marketing.	1.5 years	Feb, Jul	A\$26,480 annual	20
<b>Master of Marketing (Advanced)</b> A recognised bachelor degree in business, or successful completion of Graduate Certificate of Marketing.	2 years	Feb, Jul	A\$26,480 annual	20
<b>Master of Marketing (Professional)</b> A recognised bachelor degree in business, or successful completion of Graduate Certificate of Marketing.	2 years	Feb, Jul	A\$29,900 annual	20
<b>Master of Marketing <i>Global Leadership Program</i></b> A recognised bachelor degree in business.	2 years	Feb, Jul	A\$29,200 annual	20
<b>Master of Practising Accounting</b> Relevant work experience, preferably in an accounting-related role; applicants who have a recognised bachelor degree who wish to complete a two-year master qualification are also encouraged to apply.	2 years	Feb, Jul	A\$26,480 annual	18
<b>Master of Professional Accounting</b> A recognised bachelor degree in business, or successful completion of Graduate Certificate of Professional Accounting.	1.5 years	Feb, Jul	A\$26,480 annual	18
<b>Master of Professional Accounting <i>Global Leadership Program</i><sup>†</sup></b> A recognised bachelor degree in business.	2 years	Feb, Jul	A\$32,850 annual	18
<b>Master of Social Investment and Philanthropy</b> A recognised bachelor degree in business plus at least three years' relevant work experience, or successful completion of Graduate Certificate of Social Impact.	1.5 years	Feb, Jul	A\$26,480 annual	21

Programs and entry requirements	Duration	Intake	2017 Indicative course fee*	Page
<b>Master of Social Investment and Philanthropy (Professional)</b> A recognised bachelor degree in business plus at least three years' relevant work experience, or successful completion of Graduate Certificate of Social Impact.	2 years	Feb, Jul	A\$29,900 annual	21
<b>Master of Strategic Foresight</b> A recognised bachelor degree in business plus at least three years' relevant work experience, or successful completion of Graduate Certificate of Management Studies.	1.5 years	Feb, Jul	A\$27,700 annual	21
<b>Graduate Diploma of Business Management</b> A recognised bachelor degree in business plus at least 12 months' relevant work experience, or at least four years' relevant work experience, or successful completion of Graduate Certificate of Business Management.	1 year	Feb, Jul	A\$26,480 total	19
<b>Graduate Diploma of Business Administration (International)</b> A recognised bachelor degree with a credit average.	1 year	Feb, Jul	A\$28,800 total	18
<b>Graduate Diploma of Commerce (Human Resource Management)</b> A recognised bachelor degree in business, or successful completion of Graduate Certificate of Commerce (Human Resource Management).	1 year	Feb, Jul	A\$26,480 total	20
<b>Graduate Diploma of International Business</b> A recognised bachelor degree in business, or successful completion of Graduate Certificate of International Business.	1 year	Feb, Jul	A\$26,480 total	20
<b>Graduate Diploma of International Business <i>Global Leadership Program</i><sup>†</sup></b> A recognised bachelor degree in business.	1 year	Feb, Jul	A\$32,850 total	20
<b>Graduate Diploma of Marketing</b> A recognised bachelor degree in business, or successful completion of Graduate Certificate of Marketing.	1 year	Feb, Jul	A\$26,480 total	20
<b>Graduate Diploma of Professional Accounting</b> A recognised bachelor degree in business, or successful completion of Graduate Certificate of Professional Accounting.	1 year	Feb, Jul	A\$26,480 total	18
<b>Graduate Certificate of Business Administration</b> A recognised bachelor degree in business plus at least three years' work experience in a management role, or at least five years' work experience in a management role.	6 months	Feb, Sep	A\$14,400 total	18
<b>Graduate Certificate of Business Administration (International)</b> A recognised bachelor degree with a credit average.	6 months	Feb, Jul	A\$14,400 annual	18
<b>Graduate Certificate of Business Management</b> A recognised bachelor degree plus at least 12 months' relevant work experience, or at least three years' relevant work experience.	6 months	Feb, Jul	A\$13,240 total	19
<b>Graduate Certificate of Business Management (Executive Administration)</b> A recognised bachelor degree plus at least 12 months' relevant work experience, or at least three years' relevant work experience.	6 months	Feb, Jul	A\$13,240 total	19
<b>Graduate Certificate of Commerce (Human Resource Management)</b> A recognised bachelor degree, or at least five years' relevant work experience.	6 months	Feb, Jul	A\$13,240 total	20
<b>Graduate Certificate of Entrepreneurship and Innovation</b> A recognised bachelor degree plus at least three years' of relevant work experience, or at least five years' relevant work experience.	6 months	Feb, Jul	A\$13,850 total	19
<b>Graduate Certificate of Finance and Banking</b> A recognised bachelor degree with a minimum 65 per cent overall average, or five years' relevant work experience.	6 months	Feb, Jul	A\$13,240 total	19
<b>Graduate Certificate of International Business</b> A recognised bachelor degree, or at least five years' relevant work experience.	6 months	Feb, Jul	A\$13,240 total	20
<b>Graduate Certificate of Marketing</b> A recognised bachelor degree, or at least five years' relevant work experience.	6 months	Feb, Jul	A\$13,240 total	20

# Postgraduate programs

## AT A GLANCE (CONTINUED)

Programs and entry requirements	Duration	Intake	2017 Indicative course fee*	Page
<b>Graduate Certificate of Management Studies</b> A recognised bachelor degree plus at least three years' relevant work experience, or at least five years' relevant work experience.	6 months	Feb, Jul	A\$13,850 total	19
<b>Graduate Certificate of Professional Accounting</b> A recognised bachelor degree.	6 months	Feb, Jul	A\$13,240 total	18
<b>DESIGN</b>				
<b>Master of Design</b> A recognised bachelor degree in design or equivalent, or a related qualification plus relevant work experience and presentation of a portfolio, or successful completion of Graduate Certificate of Design.	2 years	Feb, Jul	A\$27,080 annual	22
<b>Master of Design Strategy and Innovation</b> A recognised bachelor degree in design or equivalent, or successful completion of Graduate Certificate of Design Strategy and Innovation.	1.5 years	Feb	A\$27,080 annual	22
<b>Graduate Diploma of Design</b> A recognised bachelor degree in design or equivalent, or a related qualification plus relevant work experience and presentation of a portfolio, or successful completion of Graduate Certificate of Design.	1 year	Feb, Jul	A\$27,080 annual	22
<b>Graduate Diploma of Design Strategy and Innovation</b> A recognised bachelor degree in design or equivalent, or successful completion of Graduate Certificate of Design Strategy and Innovation.	1 year	Feb	A\$27,080 annual	22
<b>Graduate Certificate of Design</b> A recognised bachelor degree in design or equivalent, or a related qualification plus relevant work experience and presentation of a portfolio.	6 months	Feb, Jul	A\$13,540 total	22
<b>Graduate Certificate of Design Strategy and Innovation</b> A recognised bachelor degree.	6 months	Feb	A\$13,540 total	22
<b>ENGINEERING</b>				
<b>Master of Construction Management</b> A recognised bachelor degree in civil engineering, building, architecture, quality surveying, construction management, property, real estate, or a related discipline, or equivalent.	1.5 years	Feb, Jul	A\$31,200 annual	24
<b>Master of Construction and Infrastructure Management</b> A recognised bachelor degree in civil engineering, construction engineering, building, architecture, quality surveying, construction management, property, real estate, or a related discipline, or equivalent.	2 years	Feb, Jul	A\$31,200 annual	24
<b>Master of Engineering Science (Advanced Manufacturing Technology)</b> A recognised bachelor degree or honours-year degree in mechanical engineering, manufacturing, electrical engineering or electronic engineering with a minimum 60 per cent overall average, or a recognised graduate certificate or graduate diploma in engineering.	2 years	Feb, Jul	A\$31,200 annual	23
<b>Master of Engineering Science (Civil)</b> A recognised bachelor degree or honours-year degree or graduate certificate or graduate diploma in civil engineering with a minimum 60 overall average, or equivalent.	2 years	Feb, Jul	A\$31,200 annual	23
<b>Master of Engineering Science (Civil Structures)</b> A recognised bachelor degree or honours-year degree or graduate certificate or graduate diploma in civil engineering with a minimum 60 overall average, or equivalent.	2 years	Feb, Jul	A\$31,200 annual	24
<b>Master of Engineering Science (Electrical and Electronic)</b> A recognised bachelor degree in electronic engineering, computer engineering or communication/telecommunication engineering with a minimum 60 overall average, or a recognised honours-year degree in science with a minimum 60 overall average, or equivalent.	2 years	Feb, Jul	A\$31,200 annual	24



Programs and entry requirements	Duration	Intake	2017 Indicative course fee*	Page
<b>Master of Engineering (Advanced Manufacturing Technology)</b> A recognised bachelor degree in mechanical engineering, manufacturing, electrical engineering or electronic engineering with a minimum 60 per cent overall average.	1.5 years	Feb, Jul	A\$31,200 annual	23
<b>Master of Engineering (Advanced Manufacturing Technology)/ Master of Entrepreneurship and Innovation</b> A recognised honours-year degree or graduate certificate or graduate diploma in mechanical engineering, electrical engineering or electronic engineering, or equivalent, plus at least two years' relevant work experience. All applications must submit a 500- to 750-word statement demonstrating their suitability for the Master of Entrepreneurship and Innovation.	2 years	Feb, Jul	A\$31,200 annual	23
<b>Master of Engineering (Civil)</b> A recognised bachelor degree or honours-year degree or graduate certificate or graduate diploma in civil engineering with a minimum 60 per cent overall average, or equivalent.	1.5 years	Feb, Jul	A\$31,200 annual	23
<b>Master of Engineering (Civil)/Master of Construction Management</b> A recognised honours-year degree or graduate certificate or graduate diploma in civil engineering with a minimum 60 per cent overall average, or equivalent.	2 years	Feb, Jul	A\$31,200 annual	23
<b>Master of Engineering (Civil)/Master of Entrepreneurship and Innovation</b> A recognised honours-year degree in civil engineering with a minimum 60 per cent overall average, or a recognised graduate certificate or graduate diploma in civil engineering, or equivalent, plus at least two years' relevant work experience. All applications must submit a 500 to 750 word statement demonstrating their suitability for the Master of Entrepreneurship and Innovation.	2 years	Feb, Jul	A\$31,200 annual	24
<b>Master of Engineering (Civil Structures)</b> A recognised bachelor degree or honours-year degree or graduate certificate or graduate diploma in civil or infrastructure or construction engineering, or equivalent.	1.5 years	Feb, Jul	A\$31,200 annual	24
<b>Master of Engineering (Electrical and Electronic)</b> A recognised bachelor degree in electronic engineering, computer engineering or communication/telecommunication engineering with a minimum 60 per cent overall average, or a recognised honour-year degree in science with a minimum 60 per cent overall average, or equivalent.	1.5 years	Feb, Jul	A\$31,200 annual	24
<b>Master of Engineering (Electrical and Electronic)/Master of Entrepreneurship and Innovation</b> A recognised honours-year degree in electrical and electronic engineering with a minimum 60 per cent overall average, or a recognised graduate certificate or graduate diploma in electrical and electronic engineering, or equivalent, plus at least two years' relevant work experience. All applications must submit a 500 to 750 word statement demonstrating their suitability for the Master of Entrepreneurship and Innovation.	2 years	Feb, Jul	A\$31,200 annual	24
<b>Master of Professional Engineering</b> A recognised bachelor degree or honours-year degree or graduate certificate or graduate diploma in engineering, or equivalent.	2 years	Feb, Jul	A\$34,900 annual	24
<b>Graduate Diploma of Construction Management</b> A recognised bachelor degree in engineering, building or architecture with a minimum 60 per cent overall average.	1 year	Feb, Jul	A\$31,200 total	24
<b>Graduate Diploma of Engineering (Advanced Manufacturing Technology)</b> A recognised bachelor degree or honours-year degree in mechanical engineering, manufacturing, electrical engineering or electronic engineering with a minimum 60 per cent overall average.	1 year	Feb, Jul	A\$31,200 total	23
<b>Graduate Diploma of Engineering (Civil)</b> A recognised bachelor degree in civil engineering with a minimum 60 per cent overall average, or equivalent.	1 year	Feb, Jul	A\$31,200 total	23
<b>Graduate Diploma of Engineering (Civil Structures)</b> A recognised bachelor degree or honours-year degree in civil or infrastructure or construction engineering, or equivalent.	1 year	Feb, Jul	A\$31,200 total	23
<b>Graduate Diploma of Engineering (Electrical and Electronic)</b> A recognised bachelor degree or honours-year degree in electronic engineering, computer engineering or communication/telecommunication engineering with a minimum 60 per cent overall average, or a recognised honour-year degree in science in a related discipline, or equivalent.	1 year	Feb, Jul	A\$31,200 total	24

# Postgraduate programs

## AT A GLANCE (CONTINUED)

Programs and entry requirements	Duration	Intake	2017 Indicative course fee*	Page
<b>ENGINEERING (CONTINUED)</b>				
<b>Graduate Certificate in Construction Management</b> A recognised bachelor degree in engineering, building or architecture with a minimum 60 per cent overall average.	6 months	Feb, Jul	A\$15,600 total	24
<b>Graduate Certificate of Engineering (Advanced Manufacturing Technology)</b> A recognised bachelor degree in mechanical engineering, manufacturing, electrical engineering or electronic engineering with a minimum 60 per cent overall average, or a recognised bachelor degree in another discipline plus at least three years' relevant work experience.	6 months	Feb, Jul	A\$15,600 total	23
<b>Graduate Certificate of Engineering (Civil)</b> A recognised bachelor degree in civil engineering with a minimum 60 per cent overall average, or equivalent.	6 months	Feb, Jul	A\$15,600 total	23
<b>Graduate Certificate of Engineering (Civil Structures)</b> A recognised bachelor degree in civil or infrastructure or construction engineering, or equivalent.	6 months	Feb, Jul	A\$15,600 total	24
<b>Graduate Certificate in Engineering (Electrical and Electronic)</b> A recognised bachelor degree or honours-year degree in electronic engineering, computer engineering or communication/telecommunication engineering, or a recognised honour-year degree in science in a related discipline, or equivalent.	6 months	Feb, Jul	A\$15,600 total	24
<b>HEALTH</b>				
<b>Master of Occupational Therapy</b> The formal entry requirements for this program are: <ul style="list-style-type: none"> <li>• a recognised bachelor degree completed in the last 10 years, or a recognised bachelor degree with subsequent postgraduate studies or relevant work experience</li> <li>• a minimum 65 per cent GPA obtained in the last year of study</li> <li>• academic transcript</li> <li>• personal statement outlining the reason for applying</li> <li>• curriculum vitae</li> <li>• one-page report on knowledge of work of occupational therapists (sources to be correctly referenced using APA 6th style)</li> <li>• one-page report on problem based learning approaches in higher education (sources to be correctly referenced using APA 6th style).</li> </ul>	2 years	Jul	A\$29,900 annual	25
<b>INFORMATION AND COMMUNICATION TECHNOLOGIES</b>				
<b>Master of Engineering Science (Network Systems and Telecommunications)</b> A recognised bachelor degree in engineering, science or information technology.	2 years	Feb, Jul	A\$29,360 annual	27
<b>Master of Information Systems Management</b> A recognised bachelor degree plus at least three years' relevant work experience, or successful completion of Graduate Certificate of Information Systems Management.	2 years	Feb, Jul	A\$28,500 annual	27
<b>Master of Information Systems Management/Master of Business Administration</b> A recognised bachelor degree with a minimum 60 per cent overall average plus a least three years' work experience in a management role, or at least five year's work experience in a management role.	2 years	Feb, Jul	A\$28,500 annual	27
<b>Master of Information Technology</b> A recognised bachelor degree.	2 years	Feb, Jul	A\$29,360 annual	26
<b>Master of Information Technology Business Analysis</b> A recognised bachelor degree, or successful completion of Graduate Certificate in Information Technology Business Analysis.	2 years	Feb, Jul	A\$28,500 annual	26
<b>Master of Information Technology (Professional Computing)</b> A recognised bachelor degree in information technology.	2 years	Feb, Jul	A\$24,670 annual	27
<b>Master of Information Technology Project Management</b> A recognised bachelor degree, or at least five years' relevant work experience, or successful completion of Graduate Certificate of Information Technology Project Management.	2 years	Feb, Jul	A\$28,500 annual	26

Programs and entry requirements	Duration	Intake	2017 Indicative course fee*	Page
<b>Master of Science (Network Systems)</b> A recognised bachelor degree in engineering, science or information technology.	2 years	Feb, Jul	A\$22,020 annual	27
<b>Graduate Diploma of Information Systems Management</b> A recognised bachelor degree plus at least three years' relevant work experience, or successful completion of Graduate Certificate of Information Systems Management.	1.5 years	Feb, Jul	A\$28,500 annual	27
<b>Graduate Diploma of Information Technology</b> A recognised bachelor degree in a discipline other than information technology.	1.5 years	Feb, Jul	A\$29,360 annual	26
<b>Graduate Diploma of Information Technology Business Analysis</b> A recognised bachelor degree, or successful completion of Graduate Certificate in Information Technology Business Analysis.	1.5 years	Feb, Jul	A\$28,500 annual	26
<b>Graduate Diploma of Information Technology Project Management</b> A recognised bachelor degree, or at least five years' relevant work experience, or successful completion of Graduate Certificate of Information Technology Project Management.	1.5 years	Feb, Jul	A\$28,500 annual	26
<b>Graduate Certificate of Information Systems Management</b> A recognised bachelor degree plus at least three years' relevant work experience, or at least five years' relevant work experience.	1 years	Feb, Jul	A\$28,500 annual	27
<b>Graduate Certificate of Information Technology</b> A recognised bachelor degree in a discipline other than information technology.	1 year	Feb, Jul	A\$29,360 total	26
<b>Graduate Certificate in Information Technology Business Analysis</b> A recognised bachelor degree, or at least five years' relevant work experience.	1 year	Feb, Jul	A\$14,250 total	26
<b>Graduate Certificate of Information Technology Project Management</b> A recognised bachelor degree, or at least five years' relevant work experience.	1 year	Feb, Jul	A\$14,250 total	26

## MEDIA AND COMMUNICATIONS

<b>Master of Arts (Media and Communications)</b> A recognised bachelor degree with a minimum credit overall average, or a recognised bachelor degree with less than a credit average plus at least five years' work experience in media or communications, or a recognised honours-year degree or graduate certificate or graduate diploma in a related discipline, or successful completion of Graduate Certificate of Arts (Media and Communication).	2 years	Feb, Jul	A\$24,480 annual	28
<b>Master of Multimedia</b> A recognised bachelor degree, or a recognised honours-year degree or graduate certificate or graduate diploma in a related discipline, or successful completion of Graduate Certificate of Multimedia.	2 years	Feb, Jul	A\$27,080 annual	28
<b>Graduate Diploma of Arts (Media and Communications)</b> A recognised bachelor degree with a minimum credit overall average, or a recognised bachelor degree with less than a credit average plus at least five years' work experience in media or communications, or a recognised honours-year degree or graduate certificate or graduate diploma in a related discipline, or successful completion of Graduate Certificate of Arts (Media and Communication).	1 year	Feb, Jul	A\$24,480 total	28
<b>Graduate Diploma of Multimedia</b> A recognised bachelor degree in digital media or multimedia or media studies, or successful completion of Graduate Certificate of Multimedia with a minimum credit overall average.	1 year	Feb, Jul	A\$27,080 total	28
<b>Graduate Certificate of Arts (Media and Communications)</b> A recognised bachelor degree with a minimum credit overall average, or a recognised bachelor degree with less than a credit average plus at least five years' work experience in media or communications.	6 months	Feb, Jul	A\$12,240 total	28
<b>Graduate Certificate of Multimedia</b> A recognised bachelor degree in digital media or multimedia or media studies, or a recognised bachelor degree in another discipline plus at least five years' relevant work experience.	6 months	Feb, Jul	A\$13,540 total	28

Programs and entry requirements	Duration	Intake	2017 Indicative course fee*	Page
<b>PSYCHOLOGY</b>				
<b>Doctor of Philosophy (Clinical Psychology)</b> The formal entry requirements for this program are: <ul style="list-style-type: none"> <li>• completion of a four-year sequence of studies in psychology at first or upper-second class level in a course or courses accredited by the Australian Psychological Accreditation Council (APAC), or equivalent overseas qualifications recognised by APAC, or a master degree in psychology recognised by APAC</li> <li>• experience in face-to-face counselling or significant training in counselling skills (for example, through Lifeline), counselling skills in tertiary programs or other appropriate work experience</li> <li>• demonstrated possession of an appropriate level of knowledge and skills related to research.</li> </ul> Visit <a href="http://www.swinburne.edu.au/study">www.swinburne.edu.au/study</a> for more information about the application process.	4 years	Feb	A\$29,376 annual	29
<b>Doctor of Psychology (Clinical and Forensic Psychology)</b> The formal entry requirements for this program are: <ul style="list-style-type: none"> <li>• completion of a four-year sequence of studies in psychology at first or upper-second class level in a course or courses accredited by the Australian Psychological Society (APS), or equivalent overseas qualifications recognised by APS, or a master degree in psychology recognised by the APS</li> <li>• experience in face-to-face counselling or significant training in counselling skills (for example, through Lifeline), counselling skills in tertiary programs or other appropriate work experience</li> <li>• demonstrated possession of an appropriate level of knowledge and skill related to research.</li> </ul> Visit <a href="http://www.swinburne.edu.au/study">www.swinburne.edu.au/study</a> for more information about the application process.	4 years	Feb	A\$29,376 annual	29
<b>SCIENCE</b>				
<b>Master of Science (Biotechnology)</b> A recognised bachelor degree in a biological or chemical science.	2 years	Feb, Jul	A\$29,460 annual	30
<b>Graduate Diploma of Science (Biotechnology)</b> A recognised bachelor degree in a biological or chemical science.	1 year	Feb, Jul	A\$29,460 total	30

\* The indicative course fees detailed in this publication relate to 2017 only. They are based on a standard study load per year. Note that fees are assessed according to a student's study load in each semester. Variation to study load will result in an adjustment to tuition fees. All fees are subject to annual review and may be adjusted.

† The fee for this program is based on a study load of 112.5 credit points per year.



# Swinburne courses overseas

## Study online in your home country

Swinburne offers a range of online courses that are available to international students studying outside Australia.

For more information, visit [www.swinburne.edu.au/study/options/other-programs/offshore](http://www.swinburne.edu.au/study/options/other-programs/offshore)

### Online courses

Master of Business Administration

Graduate Certificate of Business Administration

Master of Aviation (Human Factors)

Graduate Diploma of Aviation (Human Factors)

Graduate Certificate of Aviation (Human Factors)

Master of Aviation (Management)

Graduate Diploma of Aviation (Management)

Graduate Certificate of Aviation (Management)

Master of Commerce

Graduate Diploma of Commerce

Graduate Certificate of Commerce

Master of Professional Accounting

Graduate Certificate of Professional Accounting

Master of Science (Applied Statistics)

Graduate Diploma of Science (Applied Statistics)

Graduate Certificate of Science (Applied Statistics)

Master of Science (Astronomy)

Graduate Diploma of Science (Astronomy)

Graduate Certificate of Science (Astronomy)

Master of Arts (Writing)

Graduate Diploma of Arts (Writing)

Graduate Certificate of Arts (Writing)

Master of Technology (Business Systems)

Graduate Diploma of Technology (Business Systems)

Graduate Certificate of Technology (Business Systems)

Graduate Certificate in Learning and Teaching (Higher Education)

Graduate Certificate in Risk Management

Master in Forensic Behavioural Science

Graduate Diploma in Forensic Behavioural Science

Graduate Certificate in Forensic Behavioural Science

Graduate Diploma in Forensic Mental Health Nursing

Graduate Certificate in Forensic Mental Health Nursing

Graduate Certification in Violence Risk Assessment and Management

## Study in Malaysia

Swinburne's Sarawak campus is located in Kuching, the capital city of Sarawak, East Malaysia. The campus operates in partnership with the Sarawak Foundation and the Sarawak Higher Education Foundation.

Courses offered at our Sarawak campus are almost identical to those offered at our Australian campuses.

Visit [www.swinburne.edu.my](http://www.swinburne.edu.my) for information about Sarawak courses, fees and entry requirements.

# ENTRY requirements

## English language requirements

You may be required to sit one of the English language tests prescribed by the Australian Government, regardless of whether you meet the Swinburne entry requirements by other means.

The following table shows the minimum requirements for entry into postgraduate study at Swinburne.

Visit [www.swinburne.edu.au/study/options/find](http://www.swinburne.edu.au/study/options/find) for details about English language requirements for specific courses.

## Academic requirements

You must meet the minimum academic entry requirements to be accepted into your chosen course.

Visit pages 31–38 or [www.swinburne.edu.au/study/options/find](http://www.swinburne.edu.au/study/options/find) for details of academic entry requirements.

## English requirements for postgraduate study

	IELTS (ACADEMIC MODULE)	TOEFL INTERNET BASED	ENGLISH FOR ACADEMIC PURPOSES
Postgraduate (Level depends on individual course)	Overall 6.5 (with no individual band below 6.0)	79 (with no individual band below 18)	EAP level 5 (Advanced): Overall 70% (all skills 65% or above)
	Overall 7.0 (with no individual band below 6.5)	95 (with no individual band below 20)	EAP level 5 (Advanced): Overall 75% (all skills 70% or above)

Note: Results should be no more than two years old at the time of application

Visit [www.swinburne.edu.au/international/english](http://www.swinburne.edu.au/international/english) for more information about English language requirements and alternative English language tests.

# How to **APPLY**

Follow these steps carefully to ensure your application is processed properly.

Visit [www.swinburne.edu.au/study/international/apply](http://www.swinburne.edu.au/study/international/apply) for detailed application instructions

If you need help with your application, email our application adviser at [international@swinburne.edu.au](mailto:international@swinburne.edu.au)

You can also speak with a registered Swinburne representative in your home country.

Visit [www.swinburne.edu.au/study/international/connect/representatives](http://www.swinburne.edu.au/study/international/connect/representatives) to view a list of Swinburne representatives.

---

# 1

## Choose the course that suits your interests and career goals

- See pages 17–30 for course descriptions.
- Collect any documents you may require to apply to receive credit for previous study and/or experience.
- Visit [www.swinburne.edu.au/study/options/find](http://www.swinburne.edu.au/study/options/find) to check application closing dates.

---

# 2

## Complete the application form

- Visit [www.swinburne.edu.au/international/apply](http://www.swinburne.edu.au/international/apply) to download a copy of the application form.
- Read the application form carefully, complete all relevant fields and provide all of the required documents so we can assess your application.
- Complete the credit transfer section on the form if you wish to apply for credit.
- Sign the declaration.

---

# 3

## Attach additional required documents (if applicable) to your application form

These documents include:

- certified academic transcripts with grading system
- English translations where applicable
- certified English proficiency test results
- referee reports (if applicable)
- portfolio (for some design programs)
- course or unit syllabus if you are applying for exemptions (e.g. credit transfer or Recognition of Prior Learning)
- copy of passport (photo page and relevant visa page, if applicable).

---

# 4

## Submit your application form and required documents

You can send your completed application form along with relevant documents to your registered Swinburne representative or send it directly to Swinburne at:

Swinburne International  
PO Box 218  
HAWTHORN VIC 3122  
AUSTRALIA  
Email: [international@swinburne.edu.au](mailto:international@swinburne.edu.au)

---

# 5

## Receive your offer via email

Swinburne will assess your application. If you are successful you will receive a letter of offer via email.

The offer letter will indicate:

- |                                    |  |   |
|------------------------------------|--|---|
| • the course you have been offered | • the deposit to be paid                                     | • any additional information relevant to your course. |
| • the annual tuition fee           | • the fee for your visa-length overseas student health cover |   |
| • the course commencement date     | • any conditions to the offer                                |   |
| • the duration of the course       |  |   |

---

Visit [www.swinburne.edu.au/international/accept](http://www.swinburne.edu.au/international/accept) to find out how to accept your offer.

Note: If you receive a conditional offer, you will be required to meet the condition(s) outlined in your offer letter.

# Other INFORMATION

## Applying for credit transfer

### What is credit transfer?

Credit transfer is exemption from certain course requirements in recognition for previous study and/or experience. The term 'credit' is used interchangeably with 'Recognition of Prior Learning', 'advanced standing' and/or 'status' in Australian universities.

### How to apply for credit transfer

You can apply for credit transfer by submitting a course or unit (subject) syllabus or other evidence of your skills with your application. You must also indicate on your application form that you are applying for credit transfer.

If you are applying for credit transfer for a design course you may need to submit a portfolio.

If your application for credit transfer is successful, your letter of offer will state the updated course duration and the amount of credit for which you have been assessed. If you do not apply for credit transfer when you submit your application, you can do so within the first week of commencing your course. Applications for credit transfer made after this time may not be approved.

## Applying for your student visa

You will need to obtain an Overseas Student Confirmation of Enrolment (CoE) from Swinburne to complete your student visa application. Your CoE must accompany your application.

Visit [www.border.gov.au](http://www.border.gov.au) for more information.

## Students under 18

Postgraduate courses are not available to students who are under 18 years of age.

## Overseas student health cover

All student visa holders must have overseas student health cover (OSHC) for the duration of their study.

Swinburne will arrange your visa-length OSHC membership with our preferred provider, OSHC Worldcare. The OSHC fee will be included with your deposit indicated in your letter of offer.

Visa-length OSHC membership is a once-only payment that provides rate protection for the duration of the visa. This means that even if OSHC fees increase during the duration of your visa, you do not have to pay any increase.

If you need to extend your OSHC (for example, if you fail some units and need to extend your stay in Australia to complete your course), it is your responsibility to do this directly with the OSHC provider.

Exceptions apply to Norwegian students insured under the Norwegian National Insurance Scheme (NIS) and Swedish students with health insurance provided by CSN International (the Swedish National Board of Student Aid). Please include evidence with your application if you are covered under one of these programs.

Visit [www.swinburne.edu.au/international/arrival/health-cover](http://www.swinburne.edu.au/international/arrival/health-cover)

## Students with families

If you plan to bring your family to Australia, check if any restrictions apply by contacting the Department of Immigration and Border Protection or the Australian diplomatic mission in your country. You will also need to obtain OSHC membership for your family.

Visit [www.swinburne.edu.au/study/international/plan-arrival/family](http://www.swinburne.edu.au/study/international/plan-arrival/family)

### Children

If you have children between five and 15 years of age who you plan to bring to Australia, you must enrol them in school. Full fees are payable at both government and non-government schools.

If you will be enrolled as a postgraduate research student at Swinburne, the Victorian Government may provide exemption from tuition fees in Victorian government primary and secondary schools for your children.

Visit [www.education.vic.gov.au](http://www.education.vic.gov.au) to find a complete list of Victorian primary and secondary schools. Information about fees, applications and enrolment for government, primary and secondary schools may be found online at [www.study.vic.gov.au](http://www.study.vic.gov.au)

Applications to non-government schools must be made directly to the school of your choice.

Note: Your student visa assessment criteria may change if your family is accompanying you to Australia.



## Your rights and responsibilities

The Educational Services for Overseas Students (ESOS) Act regulates the education and training sector's involvement with overseas students studying in Australia on student visas.

Visit [www.studyinaustralia.gov.au/global/australian-education/education-system/esos-act](http://www.studyinaustralia.gov.au/global/australian-education/education-system/esos-act) to read a description of the ESOS framework.

Restrictions may apply if you wish to change your enrolment. Visit [www.swinburne.edu.au/international/enrolment-change](http://www.swinburne.edu.au/international/enrolment-change) for more information about deferring, suspending or cancelling your enrolment.

Visit [www.swinburne.edu.au/international/apply/after-you-apply/accept-offer](http://www.swinburne.edu.au/international/apply/after-you-apply/accept-offer) to read Swinburne's refund provisions, which are outlined in the offer acceptance form.



SWIN  
BUR  
NE





## ● FURTHER INFORMATION

1800 897 973 (within Australia)  
+61 3 8676 7002 (worldwide)  
[international@swinburne.edu.au](mailto:international@swinburne.edu.au)  
[swinburne.edu.au/international](http://swinburne.edu.au/international)

Swinburne International  
Ground Floor  
Swinburne Place West  
Wakefield Street  
Hawthorn, Victoria 3122  
Australia



CRICOS Provider Code (Swinburne University of Technology): 00111D  
Training Organisation Identifier: 3059

The information contained in this course guide was correct at the time of publication, May 2016.  
The university reserves the right to alter or amend the material contained in this guide.

For most up-to-date course information please visit our website.