

# Postgraduate Programs

▶ 2014



## ► CONTENTS

Thinking about your future	1
Supporting your career goals	3
Your study experience	4
Flexible study options	6
Research excellence	7
Student support services	8
Campus facilities	9
Financial matters	11
How to apply	12
Course information	
Aviation	15
Business and Management	17
Design	25
Digital Media	27
Engineering	29
Information and Communication Technologies	33
Learning and Teaching	37
Media and Communications	39
Psychology and Community Services	41
Science	45

# Thinking about your future



Students come first at Swinburne. We equip our students with the knowledge and capabilities they need to develop their careers through high-quality teaching and industry-engaged learning.

## Quality teaching

With a reputation for quality education and focused research, Swinburne attracts highly qualified academics and educational leaders who have industry experience in the areas they teach. We have been awarded five-star ratings for teaching quality and graduate satisfaction by *The Good Universities Guide to Postgraduate Courses 2012*.

## Industry-focused courses

Industry advisers are active on our course panels, ensuring that what you learn is relevant to employers. You'll also learn from academic staff who have industry experience and are talented in bringing that experience to their teaching.

## Flexible study options

Swinburne offers flexible study options so you can fit study into your busy life. Students have access to online study, part-time study, distance education or a combination of two or three study modes. Some programs offer extra units of study during our Summer and Winter terms, allowing you to speed up your studies and finish your course sooner.

## World-ranked university

Swinburne is an internationally recognised research-intensive university. Our rankings – top 400 in the world and top three in Melbourne – by the 2012 Academic Ranking of World Universities – prove the success of our focus on and investment in research and research infrastructure. It is why we are leaders in science, innovation, technology, business and design.

A truly international institution, Swinburne has developed partner relationships with more than 90 universities around the world and has been teaching at its Sarawak campus in Malaysia for more than 10 years.

## Modern and convenient campus

Our main campus is located in the vibrant suburb of Hawthorn. We offer a supportive and secure study environment with modern facilities. In 2014 we open the new Advanced Manufacturing and Design Centre, which is a symbol of the study opportunities, innovative thinking and dynamic campus life at Swinburne.



'I decided to complete further study to assist with business case development and commerciality of opportunities. My main reason for choosing Swinburne was flexibility. I travel extensively during the week, so didn't want my studies to interfere with my work or vice versa. Being able to attend classes on a Saturday meant I could travel or work longer hours as required. As with work life, it is the same with academic life – the more you put in the greater the reward.'

**Tanya**  
Master of Professional Accounting



# Supporting your career goals

Postgraduate qualifications through Swinburne can open up all sorts of career opportunities. They can help you reach your goals – whether they may be getting a better job, attracting a higher salary or making a complete career change.

Our postgraduate programs offer industry currency and are designed with your career in mind. Our programs are attuned to the requirements of business; when the needs of business change, our qualifications change. And our academic staff know what skills and knowledge employers are looking for because they have industry experience or currently work in industry.

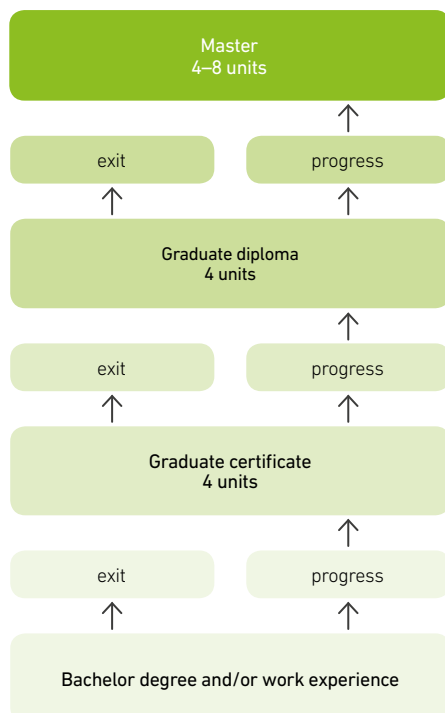
We offer a range of flexible study options to suit your schedule – you can undertake most of our courses on a part-time basis, and we offer many entirely online. This flexibility also extends to timetabling, with numerous courses offering alternative class times such as during evenings and weekends.

# Your study experience

Postgraduate qualifications by coursework require the successful completion of core units and electives. These programs usually involve attendance at lectures, classes, seminars or labs, and the completion of assignments and exams. Depending on the qualification level, some also require a minor thesis.

Most of our coursework programs have a 'nested' qualification structure, providing flexible entry and exit points. You might like to start modestly and build on each qualification as you go – from graduate certificate, to graduate diploma, to master degree.

This means that if you have to withdraw from the course early, to accommodate any of life's unexpected events, you could still exit with a formal qualification that recognises your work done to date.



## Master degree

A master degree by coursework usually takes eighteen months of full-time study, or equivalent part-time (incorporating the graduate diploma and graduate certificate units). Applicants usually require a bachelor degree or substantial industry experience in the field of study.

## Graduate diploma

A graduate diploma is generally one year full-time or two years part-time study (incorporating the graduate certificate units). Applicants usually need a bachelor degree, but not necessarily in the proposed area of study. If you don't have a degree but have substantial related industry experience, you may also be eligible.

## Graduate certificate

This entry-level postgraduate qualification is often suitable if you have several years' work experience but no recent formal academic qualifications.

A graduate certificate generally takes six months full-time or one year part-time to complete. Successful completion of a graduate certificate may allow you to progress to a graduate diploma.

## Single unit of study

If a particular unit of study takes your interest, you can enrol in a single unit. If you decide later on that you would like to undertake additional units or the complete program, you may receive credit for any single units already completed.

Note: Single units are subject to availability and faculty approval.

Visit [www.swinburne.edu.au/postgrad/singleunit](http://www.swinburne.edu.au/postgrad/singleunit)

## Professional recognition

Many of our postgraduate programs are recognised by professional organisations. This means that the qualification you receive will be highly regarded in industry and may enhance your career opportunities.

## Credit transfer

If you have completed a qualification at Swinburne or another institution, you may be eligible to receive credit for your previous studies and enter your postgraduate program with advanced standing.

Visit [www.swinburne.edu.au/postgrad/pathways](http://www.swinburne.edu.au/postgrad/pathways) to find out if your previous study is eligible for credit transfer in the program of your choice.

## Recognition for the skills you already have

If you have previous work experience or education, you might be closer to a qualification than you think. Recognition of Prior Learning (RPL) recognises existing knowledge and experience and measures it against the qualification in which you are enrolled, meaning you may not need to complete all the units in your course.

Visit [www.swinburne.edu.au/rpl](http://www.swinburne.edu.au/rpl)



# WINNING WAYS WITH WASTE

**A solution to a pressing environmental problem is being developed thanks to the skills acquired by graduates of Swinburne's Master of Entrepreneurship and Innovation.**

**H**alf a million tonnes of absorbent hygiene products go into landfill annually. In fact according to Mark Dunn, graduate of Swinburne's Master of Entrepreneurship and Innovation (MEI), Australia generates enough nappy and continence-aid waste to fill the Melbourne Cricket Ground every seven months.

It is a problem that Dunn and fellow MEI graduate Gareth Williamson hope to solve. Dunn and Williamson have formed a company, Relivit, which is planning to build seven plants around Australia to recycle absorbent hygiene material – about 180,000 tonnes per year.

The idea for Relivit came out of a business plan assignment they had been working on. Williamson had been a customer of a company called MyPlanet, which offered a household nappy recycling service but which closed down when the parent company was sold. 'We investigated what happened, examined the business model and identified where it could be restructured. We concluded that the idea was a viable one in the current environment,' explains Williamson.

In Australia there is no alternative to this material going to landfill. As Dunn explains, 'Not only is this a loss of materials, but it also adds immensely to landfill. That alone is becoming a serious problem as new landfills are expensive, invariably located further away from the city and so are more costly to reach.'

## Refining the business model

Dunn and Williamson spent a lot of time researching the market. They put into practice the business theory they were learning to analyse and assess the opportunity. Then they asked the crucial question: Will this actually make money?

In addition to the course content, Dunn and Williamson believe the opportunity to participate in business plan competitions held by Swinburne and other universities have been crucial. According to Dunn, 'They require you to pull it all together and expose it to critical review. That feedback then prompted us to address weaknesses and find answers to important questions.'

Performing in business plan competitions is something that Dunn and Williamson have excelled at. Not only did they take the Swinburne Venture Cup 2010, but they also won the John Heine Challenge in 2010 (an Australian national competition) and the Licensing Executives Society International (LES) Global Award in 2012.

This success has helped them to make valuable contacts. 'We strongly recommend that any student seriously planning to launch their own venture commit to participating in the competitions,' says Dunn.

Seth Jones, acting director of Swinburne Knowledge (Swinburne's commercialisation office) and mentor to Dunn and Williamson agrees. He cites the opportunity Dunn had to meet a representative of Kimberly-Clarke – a global supplier of absorbent hygiene products – when participating in the 2012 LESI Foundation Graduate Student Business Plan Competition in Boston, as a prime example.

Jones believes in the potential of Relivit. 'I think the timing is good. As a society we need to find more effective ways of dealing with our waste. They have a technology that can address a community need. It's also really significant that they have got traction with industry partners.'

## A useful foundation

Dunn and Williamson credit the MEI program with helping them gain the skills to develop their concept and communicate it to key stakeholders, particularly potential investors.

Jones believes the MEI program is a valuable steppingstone for entrepreneurs: 'It brings like-minded people together, which is a great benefit. Mark and Gareth hadn't met before starting the program, and as a result of the program they were able to work on an idea they were passionate about. The MEI program has a history of enabling that kind of connection.'

*This is an edited version of an article by Lisa Starkey published in Swinburne's Venture magazine, issue three, 2012.*

# Flexible study options

We provide a number of options to help you fit study into your schedule and that allow you to progress at your own pace.

## On-campus study

Most of our on-campus postgraduate coursework programs can be taken on a full-time or part-time basis. Classes may be offered during the day, in the evening or on weekends. All of our on-campus programs are delivered at our Hawthorn campus.

## Online learning

Some programs are available entirely online; others have selected online units. Students may study via virtual lectures and e-tutors, and stay in touch through email and group chat rooms. Some online units will be complemented with on-campus workshops.

## Distance education

Distance education means little or no time is required on campus. With this option, you receive a range of comprehensive learning materials, which may include study guides, readings, set exercises, references and online learning.

## Block release

A limited number of programs offer a 'block release' option – an intensive block of classes that allow students to attend several full-day sessions, rather than regular weekly classes. Regional or interstate students and others who need to travel to attend campus find these releases particularly beneficial.

## Winter and Summer terms

If you want to speed up your studies, some programs offer extra units of study in our Summer or Winter terms.

Visit [www.swinburne.edu.au/summer-winter](http://www.swinburne.edu.au/summer-winter)

## Intakes

Our postgraduate courses usually have two key intakes per year: one in early March and another in early August. A number of programs have additional intake dates throughout the year.

Visit [www.swinburne.edu.au/postgrad/key-dates](http://www.swinburne.edu.au/postgrad/key-dates)

## International exchange

Returning to study also opens up the opportunity to participate in an international exchange or short-term international study program. There are a range of options for postgraduate students wanting to combine an overseas experience with their study.

Visit [www.swinburne.edu.au/abroad](http://www.swinburne.edu.au/abroad)



# Research excellence

Swinburne has an international reputation for quality research that connects science and technology with business and the community. Our focus is on achieving significant innovations that address challenges and advance society. Our researchers foster extensive national and international academic networks and connections with industry, providing excellent opportunities for students.

Visit [www.swinburne.edu.au/research](http://www.swinburne.edu.au/research) for more information about our research programs and latest achievements.

## Postgraduate study by research

Swinburne has 14 research centres that bring together leading researchers and provide valuable opportunities for postgraduate research students. Our major research centres offer programs that target industry-specific problems and address the needs and demands of society.

This connection – with local and international industries, research institutions, and government and community services – can be invaluable for your career. Our postgraduate research programs give you access to excellent facilities, ample resources, ongoing support and committed academic supervision.

A number of programs are available:

- Doctor of Design
- Doctor of Philosophy (PhD) – by thesis, exegesis/project or publication
- Doctor of Psychology (Clinical)
- Doctor of Psychology (Counselling)
- Master of Arts
- Master of Commerce
- Master of Design
- Master of Engineering
- Master of Science.

The standard duration of a master degree by research is two years; for a PhD it is three years, but there are some exceptions.

## Research focus

Our research is carried out across a range of multidisciplinary fields. Swinburne has particular research strengths in:

- business and enterprise – entrepreneurship and social enterprise, work and ageing, public sector management and international business
- design – design education and designed learning environments, designing virtual environments, product development and innovation, emotion and design
- engineering – advanced manufacturing, sustainable infrastructure, fluid flow modelling and advanced materials
- information and communication technologies – software engineering, internet infrastructure and applications, intelligent systems and information systems
- life and health sciences – brain science, psychology, biotechnology and biomedical instrumentation
- physical and chemical sciences – laser and optics, astronomy, astrophysics and molecular modelling
- social sciences – media and communications, citizenship and government, cities and housing, technology and society.

As part of our vision to become Australia's leading university in the areas of science, technology and innovation by 2020, we are committed to producing outstanding research that is relevant and internationally recognised.

Our research focus will extend to five outcome areas:

- future manufacturing
- sustainable futures
- digital frontiers
- personal and societal wellbeing
- inspirational science and technology.

## Research achievements

Our commitment to high-quality teaching and research was reflected in our ratings in the Australian Government's *Excellence in Research for Australia 2012* report. Swinburne received the highest possible rating – 'well above world standard' – for Astronomical and Space Sciences, Physical Sciences (the only university in Victoria to receiving this rating for this area) and Maritime Engineering (the only university in Australia to achieve this rating for this area). Swinburne was also rated 'above world standard' for Optical Physics, Computer Software, Materials Engineering, Physical Chemistry, Psychology, and Communication and Media Studies.

Our research has produced numerous innovative breakthroughs, including:

- developing the world's most efficient broadband nanoplasmonic solar cell technology with the potential to double the efficiency and halve the cost of future solar power installations
- using nanoscopic particles to create 5D storage disc capacity equivalent to more than 2000 times current DVDs
- developing an endoscopic two-photon microscope that aids in the diagnosis of cancer
- developing a technique that paves the way for the use of super light-weight magnesium in the manufacture of lighter, more environmentally friendly cars
- developing ground-breaking techniques to change the surface of titanium implants and develop bioactive coatings to reduce the risk of infection and rejection for people with surgical implants
- conducting the most comprehensive global study of its kind, which found that ocean wind speeds and wave heights have increased significantly over the last 25 years
- leading international astronomy research teams in:
  - discovering how supermassive black holes grow
  - discovering a small planet made of diamond in our Milky Way
  - finding a rare, rectangular-shaped galaxy with a resemblance to an emerald-cut diamond
  - observing the oldest supernovae ever seen, reaching back 12 billion years.

# Student support services

Whether you're returning to study after a long absence or you're in the workplace and want to retrain for a promotion or career change, there are a number of services that can make your transition to study easier.

## Orientation and transition

If you've been out of study for a number of years, we understand that you might be feeling a little apprehensive. Swinburne's postgraduate orientation programs can help you prepare.

Orientation programs are generally held in the week preceding class commencement. They provide information on:

- administration systems
- timetabling
- library information
- student services
- academic success
- program overviews
- networking.

## Academic Success Program

Returning to student life can be challenging. Swinburne's Academic Success Program eases the transition into study. The program provides a range of support services, including counselling, workshops and online resources, to give you the skills you need to succeed.

## Advice on career planning

Swinburne has extensive careers and employment support services available to students, including:

- help and advice with career planning
- access to seminars, résumé checking and an online job service
- a range of specially developed online resources, including research and reports
- tips on how to self-market, both in person and in writing
- information on pursuing an academic career.

Visit [www.swinburne.edu.au/careers/postgraduates](http://www.swinburne.edu.au/careers/postgraduates)

## Counselling support

Swinburne students can access free counselling for any study, work, personal or relationship issues they are experiencing.

Visit [www.swinburne.edu.au/counselling](http://www.swinburne.edu.au/counselling)

## Disability support services

Swinburne is committed to increasing and enhancing educational opportunities for people with disabilities. Disability Liaison Officers are available on each campus. They can assist with adaptive technologies, campus parking and access, alternative assessment arrangements and study support, and will formulate an appropriate support strategy with each student individually.

Visit [www.swinburne.edu.au/disability](http://www.swinburne.edu.au/disability)

## Swinburne Alumni

When you enrol in a postgraduate qualification at Swinburne, you automatically become a member of the Swinburne Alumni community.

Swinburne Alumni gives members access to a range of benefits and services, including professional development and networking opportunities. Following graduation, your membership will be your link to your school or faculty, and to the Swinburne Alumni community around the world.

Visit [www.swinburne.edu.au/alumni](http://www.swinburne.edu.au/alumni)

# Campus facilities

Our Hawthorn campus offers a lively and inclusive community. A range of facilities and services are provided to support and help you balance the demands of study with your other interests. Many of these facilities and services are funded in part by the annual student amenities fee.

## Multimillion-dollar facilities

Swinburne has made significant investment in major refurbishments and new infrastructure at all of our campuses. The development of new buildings, renovation of existing buildings and landscaping have enhanced the study environment and education experience we offer to students.

New buildings at Hawthorn include:

- the \$100 million Advanced Manufacturing and Design Centre, opening in 2014. The centre will provide a purpose-built teaching and learning environment for design, business, engineering and information technology students.
- the Advanced Technologies Centre, featuring state-of-the-art laboratories and research and teaching facilities. It includes a 550-seat retractable lecture theatre, 40 high-tech learning spaces and the Smart Structures Laboratory – the only one of its kind in Australia – for leading-edge research in structural engineering.
- the George building, housing student health, careers and employment services, study areas and a games room.

## Wireless networking

Wireless network access at Swinburne means that you can turn on your laptop or mobile telephone at any time, anywhere within the coverage areas, and have access to the internet and university network.

## Computer labs

Swinburne offers a number of PC labs to assist you in completing your assessments. The library at Hawthorn provides a Late Lab, which offers 24-hour, seven-day-a-week access.

## Libraries

As a Swinburne student you will have access to the extensive collection of resource material in our campus library. Resources available for student use include books, journals and electronic resources. Swinburne libraries also have workstations, computers, printers, scanners and photocopiers for student use.

## Childcare facilities

A childcare centre at Hawthorn operates Monday to Friday. Fees apply.

## Health services

Friendly and accessible health services at Hawthorn include free appointments with registered nurses and affordable appointments with doctors.

## Sport and recreation

Hawthorn offers gym facilities and personal training (at student-friendly rates), as well as several sporting clubs for students to join.





# Financial matters

Tuition fees for postgraduate programs are listed with the relevant program information in this publication. You may also need to allow for the purchase of books or equipment.

There is also a student services and amenities fee. In 2013, the fee is \$273 for a full-time student.

The fees for single units are listed under individual program outlines on our fees website.

Note: Fees are reviewed each year and may increase without notice.

Fees are payable at the time of enrolment for each semester. There are three payment options:

- pay the full tuition fee up-front
- pay some of the tuition fee up-front and request a FEE-HELP loan for the remainder of the fee
- request a FEE-HELP loan for the full tuition fee.

Visit [www.swinburne.edu.au/fees](http://www.swinburne.edu.au/fees)

## Commonwealth supported places

Commonwealth supported places are available for a limited number of Swinburne 2014 postgraduate programs:

- Master of Professional Accounting
- Master of Psychology (Clinical Psychology)
- Master of Technology (Information Technology).

Students enrolled in these programs are only required to contribute part of the cost of their course.

For more information, call 1300 275 794.

## FEE-HELP

Financial assistance is available in the form of the Commonwealth Government's FEE-HELP program. It is available to eligible fee-paying students to help pay part or all of their tuition fees, and allows you to defer all or part of the cost of the fee-paying course.

You are entitled to FEE-HELP assistance if you:

- are undertaking study with an approved higher education provider
- meet the citizenship or residency requirements
- are enrolled in eligible unit(s) on or before the census date and remain registered at the end of the census date\*
- do not hold a Commonwealth supported place in relation to that unit(s)
- have a tax file number
- have submitted a valid Request for FEE-HELP Assistance form on or before the census date\*
- have not exceeded the FEE-HELP limit.

For 2013, the FEE-HELP limit is \$93,204 for most courses. This amount is indexed each year.

You will start repaying your FEE-HELP debt via your taxed salary once you begin earning above the compulsory repayment threshold. Payments continue until the loan is repaid.

Visit [www.studyassist.gov.au](http://www.studyassist.gov.au)

\*Visit [www.swinburne.edu.au/calendar](http://www.swinburne.edu.au/calendar) for Swinburne's census dates.

## VET FEE-HELP

Students undertaking a vocational graduate certificate may be eligible for financial assistance via VET FEE-HELP. This is a Commonwealth Government loan scheme through which you can defer the payment of your tuition fees. When your income reaches a certain repayment threshold the debt is repaid through the tax system.

A loan fee of 20 per cent applies to VET FEE-HELP loans, except for those students who are eligible for a funded place. VET FEE-HELP does not cover the loan fee, any amenities or materials fees, accommodation or living expenses.

Visit [www.studyassist.gov.au](http://www.studyassist.gov.au)

## Scholarships

Scholarships are awarded based on a range of criteria, including academic merit, community consciousness and leadership potential.

Visit [www.swinburne.edu.au/scholarships](http://www.swinburne.edu.au/scholarships) for full details and eligibility/selection criteria.

## Employer assistance

Many employers have study support policies that include financial and other support. Speak to your employer to find out if you are eligible to receive such assistance.

# How to apply

Admission to a master degree by coursework generally requires applicants to hold a bachelor degree. However, if you have enough work experience, you may be granted admission at either a graduate certificate or graduate diploma level. On successful completion of these courses you may progress to the master degree.

To apply for a postgraduate program follow this step-by-step process.

## 1 Choose the course that suits your interests and career goals

- See pages 13 to 47 for program descriptions. You can list up to three preferences in the application form.
- You may like to attend a postgraduate information session or make a one-on-one appointment with a course adviser to learn more about your study options.

## 2 Complete the application form

Visit [www.swinburne.edu.au/postgrad/apply](http://www.swinburne.edu.au/postgrad/apply) to apply online or download a copy of the application form.

## 3 Attach supporting documentation

Gather your supporting documentation. This may include a:

- certified copy of your passport or birth certificate for proof of citizenship/residency
- certified copy of your academic award(s)
- certified copy of academic transcripts or results
- statement of purpose explaining what you hope to achieve from your studies
- current résumé.

Supporting documentation must be certified as a true and correct copy of the original by either the issuing body or by a person qualified to witness a statutory declaration (such as a police officer, chemist, doctor or an accountant). Photocopies of previously certified documents are not acceptable.

## 4 Submit your application

Applications, including supporting documentation, can be submitted online, by email, by post or in person.

Some programs have early closing dates. Visit [www.swinburne.edu.au/postgrad](http://www.swinburne.edu.au/postgrad) for all current application closing dates.

You will receive email notification from the university when your application has been received. Once your application has been assessed, you will be notified of the outcome.

## 5 Accepting your offer

If your application is successful, you will receive a letter of offer.

To accept your offer, you will need to confirm your acceptance via email at [enrol@swinburne.edu.au](mailto:enrol@swinburne.edu.au)

## 6 Enrolling in your program

Prior to commencing your program you will be asked to formally enrol in your chosen subjects.

Your enrolling faculty or school will send you instructions on what you need to do to enrol.

## Postgraduate information sessions

Postgraduate events and information sessions are held throughout the year. They provide a great opportunity to meet and talk to staff about your postgraduate study options.

The sessions can help you understand what your chosen postgraduate program entails – what you can learn, what your study options are and where your qualification may take you.

## One-on-one appointments

Swinburne course advisers are also available year-round to discuss which postgraduate program may be right for you and assist with your application.

Visit [www.swinburne.edu.au/postgrad/events](http://www.swinburne.edu.au/postgrad/events) for session dates or to book a one-on-one appointment.


## International students

Swinburne produces a publication specifically for international students wanting to study at postgraduate level. It contains course information, admission advice, entry requirements and information on tuition fees. To obtain a copy, contact:

**Swinburne International**  
Telephone: +61 3 8676 7002 (outside Australia) or 1800 897 973 (within Australia)  
Email: [international@swinburne.edu.au](mailto:international@swinburne.edu.au)  
[www.swinburne.edu.au/international](http://www.swinburne.edu.au/international)

## ► Course information

Aviation	15
Business and Management	17
Design	25
Digital Media	27
Engineering	29
Information and Communication Technologies	33
Learning and Teaching	37
Media and Communications	39
Psychology and Community Services	41
Science	45



'A longing to be part of the Australian aviation industry led me to undertake this course. I chose to study at Swinburne because its aviation courses are second to none, and I'm able to study part-time online and still work full-time. I have a much greater appreciation for and understanding of the challenges of safe aviation operations, and as I head into a career in air traffic control this sort of awareness could not be more valuable.'

**Stephanie**  
Master of Aviation (Human Factors)



# ► Aviation

Swinburne's aviation programs have been developed in consultation with industry to ensure the content reflects the dynamics of this rapidly changing area. Our programs are for those seeking to assume senior management roles in aviation organisations, or to enhance their skills and abilities.

## Industry advisory committee

The Swinburne Aviation Industry Advisory Committee comprises senior executives from the aviation industry, within Australia and overseas. The committee meets with academic staff to review the content of our undergraduate and postgraduate programs and provide advice on the accreditation of new programs.

## Aviation human factors

### ► Master of Aviation (Human Factors) – M096N

Incorporating:

- Graduate Diploma of Aviation (Human Factors) – M095N
- Graduate Certificate of Aviation (Human Factors) – M094N

**Campus:** Distance

**Duration:** *Master* – 1.5 yrs FT or 3 yrs PT  
*Graduate diploma* – 1 yr FT or 2 yrs PT  
*Graduate certificate* – 0.5 yr FT or 1 yr PT

**Total course fees\*:** *Master* – \$31,200  
*Graduate diploma* – \$20,800  
*Graduate certificate* – \$10,400

**Intake:** March, August

#### Entry requirements

A recognised bachelor degree or postgraduate qualification in a relevant discipline, or currently working in the aviation industry. Applicants who have at least two years' operational experience are also encouraged to apply.

#### Course description

This program is designed to enhance students' skills and abilities to design and implement human factors programs within the aviation industry. It also provides insight into management of the air transportation industry. Students gain an understanding of the multiple facets of human factors training and its application.

The Aviation Industry Conference, an annual three-day event held at the Hawthorn campus, forms a free unit of study and attendance is compulsory for all students enrolled in this program. Students only need to complete this unit once, regardless of the duration of their program.

#### Career opportunities

Graduates may find employment in areas such as safety management systems, human factors program development, human factors training or human factors research in airlines and other associated aviation organisations.

---

\*Fees are indicative, reviewed each year and may increase without notice. Fees do not include the student services and amenities fee.

## Aviation management

### ► Master of Aviation (Management) – MF96N

Incorporating:

- Graduate Diploma of Aviation (Management) – MF95N
- Graduate Certificate of Aviation (Management) – MF94N

**Campus:** Distance

**Duration:** *Master* – 1.5 yrs FT or 3 yrs PT  
*Graduate diploma* – 1 yr FT or 2 yrs PT  
*Graduate certificate* – 0.5 yr FT or 1 yr PT

**Total course fees\*:** *Master* – \$31,200  
*Graduate diploma* – \$20,800  
*Graduate certificate* – \$10,400

**Intake:** March, August

#### **Entry requirements**

A recognised bachelor degree or postgraduate qualification in a relevant discipline, or currently working in the aviation industry. Applicants who have at least two years' operational experience are also encouraged to apply.

#### **Course description**

This program is designed to develop students' understanding and approach to the multi-organisational aspects of commercial aircraft operation. It provides students with the necessary skills in the field of air transportation management. The program also provides insight into the multiple facets of management, including organisational, regulatory, technical and business contexts, and their application in the air transportation industry.

The Aviation Industry Conference, an annual three-day event held at the Hawthorn campus, forms a free unit of study and attendance is compulsory for all students enrolled in this program. Students only need to complete this unit once, regardless of the duration of their program.

#### **Career opportunities**

Graduates may find employment in airline or airport planning and operational functions, or in roles in regulator or other aviation organisations.

## Operational safety systems

### ► Professional Certificate of Aviation (Operational Safety Systems) – MF82N

**Campus:** Distance

**Duration:** 0.5 yr FT

**Total course fees\*:** \$2600

**Intake:** March, August

#### **Entry requirements**

A recognised bachelor degree or completion of a specific vocational program in safety, such as the CASA Diploma of Aviation Safety Regulation.

Applicants who have at least two years' experience in an operational environment and those from other industries who satisfy the general admission requirements are also encouraged to apply.

#### **Course description**

This course provides the specific vocational knowledge and skills for aviation professionals seeking or undertaking operational roles in a safety management system.

#### **Career opportunities**

Graduates may wish to pursue further studies in aviation.

#### **Professional recognition**

This course meets the Civil Aviation Safety Authority (CASA) guidelines for Civil Aviation Authority Publications (CAAPs) SMS-1(0), SMS-2(0) and SMS-3(0), and amendments to CAO 82.5.

---

\*Fees are indicative, reviewed each year and may increase without notice. Fees do not include the student services and amenities fee.

---

# ► Business and Management



In today's business environment it is essential that employees are able to demonstrate an increasing contribution to their organisations through postgraduate study. Programs in these disciplines are ideal if you're looking to start your own business, sharpen existing knowledge or upgrade your skill set to move into a more senior position.

## Accounting

### ► Master of Practising Accounting – CMPA740

**Campus:** Hawthorn  
**Duration:** 2 yrs FT or 4 yrs PT  
**Total course fees\*:** \$41,200  
**Intake:** March, August

#### Entry requirements

Applicants should have relevant and significant work experience. This program is a non-graduate entry option for students wanting to specialise in accounting for professional recognition who do not have a recognised bachelor degree. Applicants who have a recognised bachelor degree who wish to undertake a two-year program are also encouraged to apply.

#### Course description

This program offers students the opportunity to specialise in accounting for professional recognition. Accounting is the language of business and the skills taught in this program are relevant to many areas of professional interest, including marketing, economic forecasting, finance and engineering. Knowledge of accounting and finance can help individuals and organisations understand how to use resources (money) to the best advantage.

The program incorporates units from the Master of Professional Accounting, Graduate Diploma of Professional Accounting and Graduate Certificate of Professional Accounting.

#### Career opportunities

Graduates may gain enhanced theoretical and practical knowledge to improve job performance and opportunities for career advancement in the accounting and finance areas.

#### Professional recognition

Graduates may be eligible to apply for associate membership of CPA Australia (CPAA), the Institute of Chartered Accountants in Australia (ICAA), the Institute of Public Accountants (IPA) and the Association of Chartered Certified Accountants (ACCA).

### ► Master of Professional Accounting – CMPA640

**Incorporating:**  
► Graduate Diploma of Professional Accounting – CMPA540  
► Graduate Certificate of Professional Accounting – CMPA440

**Campus:** Hawthorn  
**Duration:** *Master* – 1.5 yrs FT or 3 yrs PT  
*Graduate diploma* – 1 yr FT or 2 yrs PT  
*Graduate certificate* – 0.5 yr FT or 1 yr PT

**Total course fees\*:** *Master* – \$30,900  
*Graduate diploma* – \$20,600  
*Graduate certificate* – \$10,300

Note: Commonwealth supported places are available for this program.

**Intake:** March, August

#### Entry requirements

A recognised bachelor degree.

#### Course description

This program is designed to provide students with the technical, practical, analytical and creative skills required to deal with accounting and finance issues in planning and decision-making.

#### Career opportunities

Many graduates may already be established in a business career. They may gain enhanced theoretical and practical knowledge to improve job performance and opportunities for career advancement in the accounting and finance areas.

#### Professional recognition

Graduates may be eligible to apply for associate membership of CPA Australia (CPAA), the Institute of Chartered Accountants in Australia (ICAA), the Institute of Public Accountants (IPA) and the Association of Chartered Certified Accountants (ACCA).

## Accounting (continued)

### ► Master of Professional Accounting *Global Leadership Program* – CMPA640U

**Campus:** Hawthorn

**Duration:** 2 yrs FT or 4 yrs PT

**Total course fees\*:** \$47,350

**Intake:** March, June, August

#### Entry requirements

A recognised bachelor degree with at least a credit average. Applicants must meet the academic requirements outlined by both Swinburne and Northeastern University. Students who wish to study in the USA must obtain an appropriate visa.

#### Course description

This program offers students two professionally recognised master degrees in two years from two high-ranking institutions: a Master of Professional Accounting from Swinburne and a Master of Science in Leadership from Northeastern University in Boston, USA. The program is delivered in Melbourne via a combination of face-to-face and online delivery modes. Students also have the opportunity to undertake part of the program at Northeastern, subject to application and visa requirements.

The accounting component provides students with the technical, practical, analytical and creative skills required to deal effectively with accounting and finance issues in planning and decision-making.

The leadership component is designed to assist today's leaders and prepare emerging leaders to meet the challenges of an increasingly complex and diverse workforce, and is taught by Northeastern academics.

#### Career opportunities

Graduates will have enhanced theoretical and practical knowledge to improve job performance and opportunities for career advancement in international labour markets.

#### Professional recognition

Graduates may be eligible to apply for associate membership of CPA Australia (CPAA) and the Institute of Public Accountants (IPA).

## Business administration

### ► Master of Business Administration – CMBA640

Incorporating:

► Graduate Diploma of Business Administration – CMBA540

► Graduate Certificate of Business Administration – CMBA440

**Campus:** Hawthorn

**Duration:** *Master* – 1.5 yrs FT or 3 yrs PT

*Graduate diploma* – 1 yr FT or 2 yrs PT

*Graduate certificate* – 0.5 yr FT or 1 yr PT

**Total course fees\*:** *Master* – \$33,600

*Graduate diploma* – \$22,400

*Graduate certificate* – \$11,200

**Intake:** March, September

#### Entry requirements

A recognised bachelor degree with at least a credit average, plus at least three years' relevant work experience. Applicants with a recognised bachelor degree with less than a credit average are also encouraged to apply and should submit a 750-word statement outlining their suitability for the program. Applicants without a relevant qualification who have at least five years' relevant experience are also encouraged to apply.

#### Course description

This program offers students contemporary management knowledge and enhanced leadership skills. Students also have the opportunity to apply that knowledge in innovative, creative and entrepreneurial ways. Students learn how to engage with and deal with uncertainty and change in the environments in which their organisations operate. They also develop skills in strategy, leadership, innovation, and ethical and social responsibility.

The program is designed to:

- develop skilled and competent managers and leaders who are innovative, have a cosmopolitan world view and are socially conscious when engaging with problems or opportunities
- enable students to meet the changing demands of business and industry to achieve and sustain international competitive advantage
- enable students to have more rewarding, satisfying and sustainable career outcomes.

#### Career opportunities

Graduates may have enhanced theoretical and practical knowledge to improve job performance and opportunities for career advancement in leadership and management roles.

### ► Master of Business Administration/ Master of Entrepreneurship and Innovation – CMBE680 **new**

**Campus:** Hawthorn

**Duration:** 2 yrs FT or 4 yrs PT

**Total course fees\*:** \$44,800

**Intake:** March, August, September

#### Entry requirements

A recognised bachelor degree with at least a credit average, plus at least three years' relevant work experience. Applicants with a recognised bachelor degree with less than a credit average are also encouraged to apply and should submit a 750-word statement outlining their suitability for the program. Applicants without a relevant qualification who have at least five years' relevant work experience are also encouraged to apply.

#### Course description

This double degree program aims to provide students with contemporary management knowledge and skills, as well as the ability to apply that knowledge in innovative, creative and entrepreneurial ways. Learning goals and objectives are based around assessing new ventures and opportunities, planning and managing rapid growth, integrating interdisciplinary approaches and applying innovating solutions.

The program is designed to:

- develop skilled and competent managers and leaders who are entrepreneurially oriented, globally focused and socially conscious
- enable students to engage and deal with uncertainty, change and opportunity in the environments in which their organisations operate
- enable students to successfully commercialise an idea.

#### Career opportunities

Graduates may have enhanced leadership and management capabilities to improve job performance and opportunities for career advancement, as well as the skills to operate effectively in a changing, complex and turbulent environment.

\*Fees are indicative, reviewed each year and may increase without notice. Fees do not include the student services and amenities fee.



## ► Master of Business Administration/ Master of Strategic Foresight – CMBF680 new

**Campus:** Hawthorn

**Duration:** 2 yrs FT or 4 yrs PT

**Total course fees\*:** \$44,800

**Intake:** March, September

### Entry requirements

A recognised bachelor degree with at least a credit average, plus at least three years' relevant work experience. Applicants with a recognised bachelor degree with less than a credit average are also encouraged to apply and should submit a 750-word statement outlining their suitability for the program. Applicants without a relevant qualification who have at least five years' relevant work experience are also encouraged to apply.

### Course description

This double degree program aims to provide students with contemporary management knowledge and skills, as well as the ability to apply that knowledge in innovative, creative and entrepreneurial ways. It also offers a sound theoretical and practical foundation for the successful practice of strategic foresight in a range of fields.

The program is designed to:

- develop skilled and competent managers and leaders who are entrepreneurially oriented, globally focused and socially conscious
- enable students to engage and deal with uncertainty, change and opportunity in the environments in which their organisations operate
- enable students to generate creative solutions to issues arising from the processes involved in applying strategic foresight methodologies.

### Career opportunities

Graduates may have enhanced leadership and management capabilities to improve job performance and opportunities for career advancement, as well as the skills to operate effectively in a changing, complex and turbulent environment. They may find employment in government policy areas and niche consulting firms that have a focus on strategy and sustainability.

### Professional recognition

Graduates are eligible for membership of the Association of Professional Futurists and the World Futures Studies Federation (WFSF).

## Business management

### ► Master of Business Management – L7801

**Incorporating:**

► Graduate Diploma of Business Management – L6801

► Graduate Certificate of Business Management – L5801

**Campus:** Hawthorn/online

**Duration:** *Master* – 1.5 yrs FT or 3 yrs PT

*Graduate diploma* – 1 yr FT or 2 yrs PT

*Graduate certificate* – 0.5 yr FT or 1 yr PT

**Total course fees\*:** *Master* – \$27,600

*Graduate diploma* – \$18,400

*Graduate certificate* – \$9200

**Intake:** March, August

### Entry requirements

A recognised bachelor degree or advanced diploma with at least 12 months' relevant industry experience, or at least four years' relevant work experience.

### Course description

This program is suitable for students from a range of disciplines. Students acquire an understanding of global, national and local pressures on business and a capacity to respond effectively to those pressures. They also learn how to develop dynamic and strategic responses to the complex internal and external challenges in organisations.

At the graduate certificate level, students choose to study general business management units or one of the following specialisations:

- executive administration
- organisational leadership
- project management
- public relations
- risk management
- supply chain management.

### Career opportunities

Graduates may have enhanced theoretical and practical knowledge to improve job performance and opportunities for career advancement into middle- or senior-management roles.

## Business systems

### ► Master of Technology (Business Systems) – L7601B

**Incorporating:**

► Graduate Diploma of Technology  
(Business Systems) – L6601B

► Graduate Certificate of Technology  
(Business Systems) – L5601B

**Campus:** Online

**Duration:** *Master* – 1.5 yrs FT or 3 yrs PT

*Graduate diploma* – 1 yr FT or 2 yrs PT

*Graduate certificate* – 0.5 yr FT or 1 yr PT

**Total course fees\*:** *Master* – \$27,600

*Graduate diploma* – \$18,400

*Graduate certificate* – \$9200

**Intake:** March, June, August, November

### Entry requirements

A recognised bachelor degree or advanced diploma or approved equivalent, plus relevant industry experience (preferably at least 12 months). Applicants without a relevant qualification who have at least four years' relevant business experience are also encouraged to apply.

### Course description

This program is designed to meet the needs of students with a range of industry backgrounds. It extends their knowledge, skills and strategic approach to the practice and development of information technology resources to meet the relevant industry requirements.

### Career opportunities

Graduates may be equipped for roles in IT management, general business management, operations management, customer relationship management, logistics and supply chain management, resource management, change management, business systems planning or IT industry analysis. They may also progress to the role of chief information officer.

## Commerce

### ► Master of Commerce – L7201

Incorporating:

- Graduate Diploma of Commerce – L6201
- Graduate Certificate of Commerce – L5201

**Campus:** Online

**Duration:** *Master* – 1.5 yrs FT or 3 yrs PT

*Graduate diploma* – 1 yr FT or 2 yrs PT

*Graduate certificate* – 0.5 yr FT or 1 yr PT

**Total course fees\*:** *Master* – \$27,600

*Graduate diploma* – \$18,400

*Graduate certificate* – \$9200

**Intake:** March, June, September, December

#### Entry requirements

A recognised bachelor degree or advanced diploma or approved equivalent. Applicants without a relevant qualification who have at least four years' relevant business experience are also encouraged to apply.

#### Course description

This program provides students with concepts, frameworks and research methods to support analytical and decision-making skills in an increasingly complex global environment. It highlights contemporary issues and themes requiring innovative and flexible commercial and managerial responses.

#### Career opportunities

Graduates may operate confidently and effectively in a global business environment in the private, public and not-for-profit sectors.

## Entrepreneurship and innovation

### ► Master of Entrepreneurship and Innovation – CMEI640M

Incorporating:

- Graduate Diploma of Entrepreneurship and Innovation – CMEI540M
- Graduate Certificate of Management Studies – CMMS440†

**Campus:** Hawthorn

**Duration:** *Master* – 1.5 yrs FT or 3 yrs PT

*Graduate diploma* – 1 yr FT or 2 yrs PT

*Graduate certificate* – 0.5 yr FT or 1 yr PT

**Total course fees\*:** *Master* – \$33,600

*Graduate diploma* – \$22,400

*Graduate certificate* – \$11,200

**Intake:** March, August

#### Entry requirements

A recognised bachelor degree with at least a credit average. Applicants without a relevant qualification who have at least three years' relevant work experience are also encouraged to apply. Applicants who do not have sufficient work experience can make a submission to the program coordinator outlining their suitability for the program.

#### Course description

This program is designed to help students understand the hurdles, opportunities and fundamental requirements that must be in place in order to realise their vision for a new, or renewed, organisation. It focuses on the specific needs of entrepreneurs seeking to successfully commercialise an idea.

The program has been comprehensively developed to include a broad range of relevant case studies and knowledge areas. Students have many opportunities to work on projects that have direct relevance to their work.

#### Career opportunities

Graduates may be equipped with skills to introduce new businesses, new products or new processes to a range of business environments, including corporate, small business, charitable organisations or government agencies.

## Executive administration

### ► Graduate Certificate of Business Management (Executive Administration) – L5801EA

**Campus:** Hawthorn/online

**Duration:** 0.5 yr FT or 1 yr PT

**Total course fees\*:** \$9200

**Intake:** March, August

#### Entry requirements

A recognised bachelor degree or advanced diploma or approved equivalent, plus relevant industry experience (preferably at least 12 months). Applicants without a relevant qualification who have at least four years' relevant business experience are also encouraged to apply.

#### Course description

This program has been specifically designed to meet the needs of administration professionals who want to develop high-level knowledge and skills in the professional area of executive administration.

#### Career opportunities

Graduates may have enhanced theoretical and practical knowledge to improve job performance and opportunities for career advancement in a broad business and international business environment. They may also progress to the Graduate Diploma of Business Management and Master of Business Management.

#### Professional recognition

Graduates may be eligible for membership of the Australian Institute of Office Professionals (AIOP).

## Finance and banking

### ► Master of Finance and Banking – CMFB640

Incorporating:

- Graduate Diploma of Finance and Banking – CMFB540†
- Graduate Certificate of Finance and Banking – CMFB440

**Campus:** Hawthorn

**Duration:** *Master* – 1.5 yrs FT or 3 yrs PT

*Graduate diploma* – 1 yr FT or 2 yrs PT

*Graduate certificate* – 0.5 yr FT or 1 yr PT

**Total course fees\*:** *Master* – \$30,900

*Graduate diploma* – \$20,600

*Graduate certificate* – \$10,300

#### Entry requirements

Applicants should have a recognised bachelor degree. Relevant work experience is preferred but not essential. Applicants without a relevant qualification who have at least three years' relevant work experience are also encouraged to apply.

#### Course description

This program offers students specialised knowledge in modern finance. Students learn about the latest developments in the fields of finance and banking.

#### Career opportunities

Graduates may have enhanced theoretical and practical knowledge to improve job performance and opportunities for career advancement.

---

\*Fees are indicative, reviewed each year and may increase without notice. Fees do not include the student services and amenities fee.

†This course is currently under review.

‡Students cannot enrol directly in this course – they must enrol in the master and may exit the program following completion of the graduate diploma.

## Human resource management

### ► Master of Commerce (Integrated Human Resource Management) – CMHR640I

Incorporating:

- Master of Commerce (Human Resource Management) – CMHR640
- Graduate Diploma of Commerce (Human Resource Management) – CMHR540
- Graduate Certificate of Commerce (Human Resource Management) – BHR440

**Campus:** Hawthorn

**Duration:** *Master (IHRM)* – 2 yrs FT or 4 yrs PT

*Master (HRM)* – 1.5 yrs FT or 3 yrs PT

*Graduate diploma* – 1 yr FT or 2 yrs PT

*Graduate certificate* – 0.5 yr FT or 1 yr PT

**Total course fees\*:** *Master (IHRM)* – \$41,200

*Master (HRM)* – \$30,900

*Graduate diploma* – \$20,600

*Graduate certificate* – \$10,300

**Intake:** March, August

#### Entry requirements

A recognised bachelor degree with at least a credit average. Applicants with a recognised bachelor degree with less than a credit average are also encouraged to apply. Relevant work experience is preferred but not essential. Applicants without a relevant qualification who have at least five years' relevant work experience are also encouraged to apply.

#### Course description

This program is ideal for human resources practitioners or those who wish to enter the profession. It provides a unique opportunity for students to gain specialised human resource management and business knowledge.

#### Career opportunities

Many graduates may already be established in a business career. They will have enhanced theoretical and practical knowledge to improve job performance and opportunities for career advancement.

#### Professional recognition

Graduates may be eligible to apply for full membership of the Australian Human Resources Institute (AHRI).

## International business

### ► Master of Commerce (International Business) – CMIB640

Incorporating:

- Graduate Diploma of Commerce (International Business) – CMIB540
- Graduate Certificate of Commerce (International Business) – CMIB440

**Campus:** Hawthorn

**Duration:** *Master* – 1.5 yrs FT or 3 yrs PT

*Graduate diploma* – 1 yr FT or 2 yrs PT

*Graduate certificate* – 0.5 yr FT or 1 yr PT

**Total course fees\*:** *Master* – \$30,900

*Graduate diploma* – \$20,600

*Graduate certificate* – \$10,300

**Intake:** March, August

#### Entry requirements

A recognised bachelor degree with at least a credit average. Applicants with a recognised bachelor degree with less than a credit average are also encouraged to apply and should submit a 500-word statement outlining their suitability for the program. Relevant business experience is preferred but not essential. Applicants without a relevant qualification who have at least five years' relevant work experience are also encouraged to apply.

#### Course description

This program provides students with specialised knowledge in international business. Students learn how to recognise and take advantage of the opportunities – and to deal with the challenges – inherent in international business environments.

#### Career opportunities

Graduates may have enhanced theoretical and practical knowledge to improve job performance and opportunities for career advancement in international business.

### ► Master of Commerce (International Business) *Global Financial Management Stream* – CMIB640G

**Campus:** Hawthorn

**Duration:** 2 yrs FT or 4 yrs PT

**Total course fees\*:** \$36,800

**Intake:** March, August

#### Entry requirements

A recognised bachelor degree with at least a credit average. Applicants with a recognised bachelor degree with less than a credit average are also encouraged to apply and should submit a 500-word statement outlining their suitability for the program. Relevant business experience is preferred but not essential. Applicants without a relevant qualification who have at least five years' relevant work experience are also encouraged to apply. Students who wish to study in the UK must obtain an appropriate visa.

#### Course description

This program offers students two professionally recognised master degrees in two years from two high-ranking institutions: a Master of Commerce (International Business) from Swinburne and a Master of Science (Global Financial Management) from Northumbria University in Newcastle upon Tyne, UK. The program is designed to prepare today's managers and emerging leaders to meet the challenges of a turbulent global financial environment, where tasks are becoming increasingly complex.

The first year of the program is delivered in Melbourne; the second and final year is offered at Northumbria's Newcastle Business School and delivered in Newcastle upon Tyne.

#### Career opportunities

Graduates may have enhanced theoretical and practical knowledge to improve job performance and opportunities for career advancement in international business. They will be well positioned for roles across multiple international labour markets.

## International business (continued)

### ► Master of Commerce (International Business) *Global Leadership Program* – CMIB640U

Incorporating:

► Graduate Diploma of Commerce  
(International Business) *Global Leadership Program* – CMIB540U

**Campus:** Hawthorn

**Duration:** *Master* – 2 yrs FT or 4 yrs PT  
*Graduate diploma* – 1 yr FT or 2 yrs PT

**Total course fees\*:** *Master* – \$42,200  
*Graduate diploma* – \$23,675

**Intake:** March, June, August

#### Entry requirements

A recognised bachelor degree with at least a credit average. Applicants with a recognised bachelor degree with less than a credit average are also encouraged to apply and should submit a 500-word statement outlining their suitability for the program. Students who wish to study in the USA must obtain an appropriate visa.

#### Course description

This program offers students two professionally recognised master degrees in two years from two high-ranking institutions: a Master of Commerce (International Business) from Swinburne and a Master of Science in Leadership from Northeastern University in Boston, USA.

The program is designed to assist today's leaders and prepare emerging leaders to meet the challenges of a continually diversifying workforce where tasks are becoming increasingly complex.

The program is delivered in Melbourne via a combination of face-to-face and online delivery modes. Students also have the opportunity to undertake part of the program at Northeastern, subject to application and visa requirements.

#### Career opportunities

Graduates may have enhanced theoretical and practical knowledge to improve job performance and opportunities for career advancement in international business. They will be well positioned for roles across multiple international labour markets.

### ► Master of International Business – CMIB640M

Incorporating:

► Graduate Diploma of International Business – CMIB540M  
► Graduate Certificate of Management Studies – CMMS440

**Campus:** Hawthorn

**Duration:** *Master* – 1.5 yrs FT or 3 yrs PT  
*Graduate diploma* – 1 yr FT or 2 yrs PT  
*Graduate certificate* – 0.5 yr FT or 1 yr PT

**Total course fees\*:** *Master* – \$30,900  
*Graduate diploma* – \$20,600  
*Graduate certificate* – \$10,300

**Intake:** March, August

#### Entry requirements

A recognised bachelor degree with at least a credit average. Applicants with a recognised bachelor degree with less than a credit average are also encouraged to apply and should submit a 500-word statement outlining their suitability for the program. Relevant business experience is preferred but not essential. Applicants without a relevant qualification who have at least three years' relevant work experience are also encouraged to apply.

#### Course description

This program combines specialised knowledge in international business with studies in management. Students gain an understanding of the principal areas of business, including accounting principles, marketing fundamentals, human resource management, supply chain management and logistics, and the economics of supply and demand.

#### Career opportunities

Graduates may gain enhanced theoretical and practical knowledge to improve job performance and opportunities for career advancement in international business.

## Marketing

### ► Master of Integrated Marketing – CMKT640I

Incorporating:

► Master of Marketing – CMKT640  
► Graduate Diploma of Marketing – CMKT540  
► Graduate Certificate of Marketing – CMKT440

**Campus:** Hawthorn

**Duration:** *Master of Integrated Marketing* – 2 yrs FT or 4 yrs PT

*Master of Marketing* – 1.5 yrs FT or 3 yrs PT  
*Graduate diploma* – 1 yr FT or 2 yrs PT  
*Graduate certificate* – 0.5 yr FT or 1 yr PT

**Total course fees\*:** *Master of Integrated Marketing* – \$41,200

*Master of Marketing* – \$30,900

*Graduate diploma* – \$20,600

*Graduate certificate* – \$10,300

**Intake:** March, August

#### Entry requirements

A recognised bachelor degree with at least a credit average. Applicants with a recognised bachelor degree with less than a credit average are also encouraged to apply and should submit a 500-word statement outlining their suitability for the program. Relevant business experience is preferred but not essential. Applicants without a relevant qualification who have at least five years' relevant work experience are also encouraged to apply.

#### Course description

This program offers students specialist knowledge in all aspects of marketing. The study of marketing is relevant to all areas of business life. Students gain an understanding of how to use available resources to their advantage in a changing environment.

#### Career opportunities

Graduates may gain enhanced theoretical and practical knowledge to improve job performance and opportunities for career advancement in marketing.

---

\*Fees are indicative, reviewed each year and may increase without notice. Fees do not include the student services and amenities fee.

## ► Master of Marketing *Global Leadership Program* – CMKT640U

**Campus:** Hawthorn

**Duration:** 2 yrs FT or 4 yrs PT

**Total course fees\*:** \$42,200

**Intake:** March, June, August

### **Entry requirements**

A recognised bachelor degree with at least a credit average. Applicants with a recognised bachelor degree with less than a credit average may be considered, but must submit a 500-word statement demonstrating their suitability for the program. Students who wish to study in the USA must obtain an appropriate visa.

### **Course description**

This program offers students two professionally recognised master degrees in two years from two high-ranking institutions: a Master of Marketing from Swinburne and a Master of Science in Leadership from Northeastern University in Boston, USA.

The program is designed to assist today's leaders and prepare emerging leaders to meet the challenges of a continually diversifying workforce where tasks are becoming increasingly complex.

The program is delivered in Melbourne via a combination of face-to-face and online delivery modes. Students also have the opportunity to undertake part of the program at Northeastern, subject to application and visa requirements.

### **Career opportunities**

Graduates may gain enhanced theoretical and practical knowledge to improve job performance and opportunities for career advancement in marketing. They will be well positioned for roles across multiple international labour markets.

## Organisational leadership Public relations

### ► Graduate Certificate of Business Management (Organisational Leadership) – L5801OL

**Campus:** Hawthorn/online

**Duration:** 1 yr PT

**Total course fees\*:** \$9200

**Intake:** March, August

### **Entry requirements**

A recognised bachelor degree or advanced diploma or approved equivalent, plus relevant industry experience (preferably at least 12 months). Applicants without a relevant qualification who have at least four years' relevant business experience are also encouraged to apply.

### **Course description**

This program provides an understanding of leadership across an organisation and the role of influence. Students will investigate emerging leadership models and behaviour, and apply an understanding of group and team dynamics to work team design. Students also explore the impact of leadership on the change process and its effect on human resources management and organisational culture.

### **Career opportunities**

Successful completion of this program can improve employment prospects, enhance current job performance, aid promotion and increase graduates' ability to meet new opportunities in a global business environment. Graduates will be equipped to pursue careers in the leadership and management of organisations across all industry sectors.

## Project management

### ► Graduate Certificate of Business Management (Project Management) – L5801PM

**Campus:** Hawthorn/online

**Duration:** 1 yr PT

**Total course fees\*:** \$9200

**Intake:** March, August

### **Entry requirements**

A recognised bachelor degree or advanced diploma or approved equivalent, plus relevant industry experience (preferably at least 12 months). Applicants without a relevant qualification who have at least four years' relevant business experience are also encouraged to apply.

### **Course description**

This program has been designed to meet the needs of practising project officers and managers who want to pursue specialist study and develop skills at a managerial level.

### **Career opportunities**

Graduates may be equipped for project management roles and to take on more senior responsibilities, or to work in the coordination and integration of a number of projects. Graduates may also progress to the Graduate Diploma of Business Management and Master of Business Management.

### **Professional recognition**

Graduates may be eligible for membership of the Australian Institute of Project Management (AIPM) and the Project Management Institute (PMI), depending on work experience.

### ► Graduate Certificate of Business Management (Public Relations) – L5801PR

**Campus:** Hawthorn

**Duration:** 1 yr PT

**Total course fees\*:** \$9200

**Intake:** March, August

### **Entry requirements**

A relevant bachelor degree or advanced diploma or approved equivalent, plus relevant industry experience (preferably at least 12 months). Applicants without a relevant qualification who have at least four years' relevant business experience are also encouraged to apply.

### **Course description**

This program provides an understanding of the theory and practices involved in operating as a PR practitioner, with a focus on ethical practices, social responsibilities, the dominance of social media and operating in the global market.

### **Career opportunities**

Graduates may be equipped for public relations management roles and to take responsibility for the preparation of internal and external communications. Graduates may also progress to the Graduate Diploma of Business Management and Master of Business Management.

### **Professional recognition**

Graduates may be eligible for membership of the Public Relations Institute of Australia (PRIA).



## Risk management

### ► Graduate Certificate of Business Management (Risk Management) – L5801RISK

**Campus:** Hawthorn/online

**Duration:** 1 yr PT

**Total course fees\*:** \$9200

**Intake:** March, August

#### Entry requirements

A recognised bachelor degree or advanced diploma or approved equivalent, plus relevant industry experience (preferably at least 12 months). Applicants without a relevant qualification who have at least four years' relevant business experience are also encouraged to apply.

#### Course description

This program is designed to meet the demand from business for managers with a greater awareness of factors posing a risk to the financial position and reputation of an organisation. Students will acquire an understanding of the types of risk present across an organisation and how to manage those risks. They will also explore the concepts of corporate governance, compliance, control and reporting within the context of managing risk.

#### Career opportunities

Successful completion of this program can improve employment prospects, enhance current job performance, aid promotion and increase graduates' ability to meet new opportunities in a global business environment. Graduates will be equipped to pursue careers in the management of risk, compliance, finance and governance.

## Social impact

### ► Graduate Certificate in Social Impact – CMSI440

**Campus:** Hawthorn

**Duration:** 1 yr PT

**Total course fees\*:** \$12,000

**Intake:** March, August

#### Entry requirements

A recognised bachelor degree with at least a credit average. Applicants without a relevant qualification who have at least five years' relevant work experience are also encouraged to apply.

#### Course description

This program focuses on building the professional capacity of managers and entrepreneurs, across the corporate, government and not-for-profit sectors. The program is delivered by Swinburne and the Melbourne Business School.

#### Career opportunities

Graduates may find employment in leadership positions in the developing fields of social impact, social innovation, social investment and social entrepreneurship.

---

\*Fees are indicative, reviewed each year and may increase without notice. Fees do not include the student services and amenities fee.

†Students cannot enrol directly in this course – they must enrol in the master and may exit the program following completion of the graduate diploma.

## Social investment and philanthropy

### ► Master of Social Investment and Philanthropy – CMSP640

Incorporating:

► Graduate Diploma of Social Investment and Philanthropy – CMSP540<sup>†</sup>

► Graduate Certificate of Management Studies – CMMS440

**Campus:** Hawthorn

**Duration:** *Master* – 1.5 yrs FT or 3 yrs PT

*Graduate diploma* – 1 yr FT or 2 yrs PT

*Graduate certificate* – 0.5 yr FT or 1 yr PT

**Total course fees\*:** *Master* – \$30,900

*Graduate diploma* – \$20,600

*Graduate certificate* – \$10,300

**Intake:** March, August

#### Entry requirements

A recognised bachelor degree with at least a credit average. Applicants without a relevant qualification who have at least three years' relevant work experience are also encouraged to apply.

#### Course description

This program is designed for those involved, or who wish to become involved, in personal giving, whether as donors, trustees or advisers. It provides graduates with policy and applied research skills, conceptual development and technical management skills, and new technology skills.

#### Career opportunities

Graduates may find management, administration, trustee and program officer roles in private and corporate trusts and foundations, public and community affairs, funds management, financial advising, sponsorship and marketing, and consulting.

## Strategic foresight

### ► Master of Strategic Foresight – CMSF640

Incorporating:

► Graduate Diploma of Strategic Foresight – CMSF540

► Graduate Certificate of Management Studies – CMMS440

**Campus:** Hawthorn

**Duration:** *Master* – 1.5 yrs FT or 3 yrs PT

*Graduate diploma* – 1 yr FT or 2 yrs PT

*Graduate certificate* – 0.5 yr FT or 1 yr PT

**Total course fees\*:** *Master* – \$33,600

*Graduate diploma* – \$22,400

*Graduate certificate* – \$11,200

**Intake:** March, August

#### Entry requirements

A recognised bachelor degree with at least a credit average and three years' relevant work experience. Applicants without a relevant qualification who have at least three years' relevant work experience are also encouraged to apply.

#### Course description

This program provides a sound foundation for the successful practice of strategic foresight in many fields. Students gain knowledge in futures studies and foresight work, and learn about a range of applied implementation options.

#### Career opportunities

Graduates will be equipped for roles in foresight and strategy in a range of organisations, including government policy areas and niche consulting firms with a focus on strategy and sustainability.

#### Professional recognition

Graduates may be eligible for membership of the Association of Professional Futurists and the World Futures Studies Federation (WFSF).

## Supply chain management

### ► Graduate Certificate of Business Management (Supply Chain Management) – L5801SCM

**Campus:** Hawthorn/online

**Duration:** 1 yr PT

**Total course fees\*:** \$9200

**Intake:** March, August

#### Entry requirements

A recognised bachelor degree or advanced diploma or approved equivalent, plus relevant industry experience (preferably at least 12 months). Applicants without a relevant qualification who have at least four years' relevant business experience are also encouraged to apply.

#### Course description

This program introduces students to the complex principles and practices associated with the duties of managing and guiding industry and organisations in supply chain management.

#### Career opportunities

Graduates may find roles in purchasing, supply, logistics, distribution and warehousing. They may also progress to the Graduate Diploma of Business Management and Master of Business Management.

# ► Design



Swinburne's postgraduate programs in design aim to develop design leaders of the future. The programs provide advanced study for designers who want to re-focus their career or achieve a higher specialisation to meet the challenges of today's design industry.

## Communication design

### ► Master of Design (Communication Design) – DMCD60

Incorporating:

#### ► Graduate Diploma of Design (Communication Design) – DMCD61

**Campus:** Hawthorn; some units may be available online

**Duration:** *Master* – 1.5 yrs FT or 3 yrs PT  
*Graduate diploma* – 1 yr FT or 2 yrs PT

**Total course fees\*:** *Master* – \$30,900  
*Graduate diploma* – \$20,600

**Intake:** March

#### Entry requirements

A recognised bachelor degree in design or a design-related area, or a relevant diploma plus at least five years' industry experience. All applicants must submit a portfolio of work; visit [www.swinburne.edu.au/design/postgrad](http://www.swinburne.edu.au/design/postgrad) for submission guidelines.

#### Course description

This program provides advanced study for designers wishing to achieve higher specialisation in communication design, preparing them to meet the increasing demands of the design industry. The program offers an advanced understanding of how communication design projects, including branding programs and information design, are developed and executed in contemporary design practice.

This program offers an advanced understanding of how communication design projects are developed and executed in contemporary design practice. It provides insight into strategic planning from the client's perspective and develop an awareness of client needs in relation to design services.

Students approach design from a range of theoretical frameworks to determine the needs of the user, project parameters and purpose of design. Students also specialise in cross-cultural brand identity design.

#### Career opportunities

Graduates may find work in design consultancies, advertising, publishing, packaging, merchandising, design research or design management.

#### Professional recognition

Graduates may be eligible for membership of the Design Institute of Australia and the Australian Graphic Design Association.

## Design anthropology

### ► Master of Design (Design Anthropology) – DMDA30

Incorporating:

► Graduate Diploma of Design (Design Anthropology) – DMDA31

**Campus:** *Master* – Hawthorn; some units may be available online

*Graduate diploma* – Hawthorn and online

**Duration:** *Master* – 1.5 yrs FT or 3 yrs PT

*Graduate diploma* – 1 yr FT or 2 yrs PT

**Total course fees\*:** *Master* – \$30,900

*Graduate diploma* – \$20,600

**Intake:** March

#### Entry requirements

A recognised bachelor degree in design, social science (especially anthropology), humanities, information science or a human–computer interaction discipline. Applicants with other tertiary qualifications and relevant industry experience are also encouraged to apply. All applicants must submit an entrance essay and a design or design strategy portfolio; visit [www.swinburne.edu.au/design/postgrad](http://www.swinburne.edu.au/design/postgrad) for submission guidelines.

#### Course description

Design anthropology combines academic anthropology with the professional practice of design. It seeks to understand how design processes and objects help define what it means to be human – how design translates human values into tangible experiences.

This program provides students with the skills to understand diverse human values and to translate these values into desirable design outcomes that enhance human experiences. The program also prepares students for leadership in a global, culturally interconnected world.

Specialisation allows additional flexibility to suit students' own career aspirations and interests. Students can specialise in one of:

- cross-cultural brand identity design
- indigenous knowledge
- sustainable design.

#### Career opportunities

Professionals with qualifications in design anthropology are increasingly sought by a wide variety of industries from advertising to urban development – anywhere an understanding of human values can be used to improve human experiences through design outcomes. As a design anthropologist, anthrodesigner or ethnographer graduates may choose to explore a career as a user experience (UX) designer/researcher, interaction designer/researcher, branding insights specialist, consumer insights specialist or social and product innovation consultant.

#### Professional recognition

Graduates may be eligible for membership of the Design Institute of Australia.

## Interior design

### ► Master of Design (Interior Design) – DMINTD60

Incorporating:

► Graduate Diploma of Design (Interior Design) – DMINTD61

**Campus:** Hawthorn; some units may be available online

**Duration:** *Master* – 1.5 yrs FT or 3 yrs PT

*Graduate diploma* – 1 yr FT or 2 yrs PT

**Total course fees\*:** *Master* – \$30,900

*Graduate diploma* – \$20,600

**Intake:** March

#### Entry requirements

A recognised bachelor degree in design or a design-related area, or a relevant diploma plus at least five years' industry experience. All applicants must submit a portfolio of work; visit [www.swinburne.edu.au/design/postgrad](http://www.swinburne.edu.au/design/postgrad) for submission guidelines.

#### Course description

This program is suitable for designers who wish to achieve higher specialisation in interior design. Students explore design projects with a focus on public environments (government agencies and institutions, theatres, cinemas, sporting venues and interpretation centres), commercial spaces (restaurants, offices, hotels, shopping areas and airports) and domestic environments.

Issues of demographic and technological change, new materials and manufacturing techniques, social and environmental sustainability, design innovation and entrepreneurial activity are also explored with a view to creating interior environments for the future. Design projects cover the construction of 3D space, surface treatments, materials, lighting, acoustics, fittings and furniture design.

Specialisation allows additional flexibility to suit students' own career aspirations and interests. Students can specialise in one of:

- innovative spatial design
- sustainable design.

#### Career opportunities

Graduates may find work in architectural and interior design practices; design management; or design of residential, commercial and government spaces, temporary spaces such as trade shows or museum displays, or public spaces and environments.

#### Professional recognition

Graduates may be eligible for membership of the Design Institute of Australia.

---

\*Fees are indicative, reviewed each year and may increase without notice. Fees do not include the student services and amenities fee.

# ► Digital Media



Swinburne's digital media program is for graduates seeking to use multimedia to enhance existing professional skills (especially those in the teaching, training or media professions), or those wishing to pursue a career in the dynamic multimedia industry.

You can tailor a significant portion of your course to your own interests, choosing from a range of elective units from associated areas, such as business, information and communication technologies, media and design, as well as units presenting core multimedia content. Units provide hands-on experience with current industry software and applications.

## Multimedia

### ► Master of Multimedia Technology – J106

Incorporating:

- Master of Multimedia – J096
- Graduate Diploma of Multimedia – J086
- Graduate Certificate of Multimedia – J076

**Campus:** Hawthorn

**Duration:** *Master of Multimedia Technology* – 2 yrs FT or 4 yrs PT

*Master of Multimedia* – 1.5 yrs FT or 3 yrs PT

*Graduate diploma* – 1 yr FT or 2 yrs PT

*Graduate certificate* – 0.5 yr FT or 1 yr PT

**Total course fees\*:** *Master of Multimedia Technology* – \$36,000

*Master of Multimedia* – \$27,000

*Graduate diploma* – \$18,000

*Graduate certificate* – \$9,000

**Intake:** March, August

#### Entry requirements

A recognised bachelor degree or postgraduate qualification, or approved equivalent. Applicants without a tertiary qualification who have substantial relevant multimedia industry experience are also encouraged to apply.

#### Course description

This program is suitable for students in the teaching, training or media professions, or those wishing to pursue a career in the exciting and dynamic multimedia industry. It offers a comprehensive and highly focused approach to multimedia with a strong emphasis on practical skills.

#### Career opportunities

Graduates may pursue employment opportunities in roles such as multimedia producer, developer or programmer; network administrator; website developer; project manager; interactive content creator; 2D/3D modeller/ animator; or database developer. They may also explore roles in multimedia advertising and digital media production.





'I chose to study at Swinburne because I was impressed by the history and gravitas of the university, and the amazing engineering facilities. What I like most about the course is the combination of subjects offered, and the supportive lecturers and study environment.'

**Nirajan**  
Master of Technology (Civil)



# ► Engineering

Swinburne's engineering programs aim to maximise career opportunities and provide a comprehensive practical and theoretical understanding of key issues and technologies. All of our programs are industry-focused, aiming to produce leaders and professionals with advanced skills and knowledge who excel in operational, tactical and strategic management roles.

## Advanced manufacturing technology

### ► Master of Engineering Science (Advanced Manufacturing Technology) – IRAMT4A

Incorporating:

- Master of Engineering (Advanced Manufacturing Technology) – IRAMT3
- Master of Technology (Advanced Manufacturing Technology) – IRAMT2A
- Graduate Certificate of Engineering (Advanced Manufacturing Technology) – IRAMT1

**Campus:** Hawthorn

**Duration:** *Master of Engineering Science* – 2 yrs FT or 4 yrs PT

*Master of Engineering* – 1.5 yrs FT or 3 yrs PT

*Master of Technology* – 1 yr FT or 2 yrs PT

*Graduate certificate* – 0.5 yr FT or 1 yr PT

**Total course fees\*:** *Master of Engineering Science* – \$44,800

*Master of Engineering* – \$33,600

*Master of Technology* – \$22,400

*Graduate certificate* – \$11,200

**Intake:** March, August

#### Entry requirements

A recognised four-year bachelor degree in engineering with a minimum 60 per cent average. Applicants with other tertiary qualifications and relevant industry experience are also encouraged to apply.

#### Course description

This program provides students with an understanding of advanced and emerging manufacturing technologies. Students also learn the skills needed to implement these technologies in modern global and local industries.

#### Career opportunities

Graduates may find employment as design, manufacturing, production or systems engineers; engineering managers; or research and development engineers in the automotive, appliance manufacturing and other manufacturing industries.

## Civil engineering

### ► Master of Engineering Science (Civil) – C104A

Incorporating:

- Master of Engineering (Civil) – C103
- Master of Technology (Civil) – C102
- Graduate Certificate of Engineering (Civil) – C101

**Campus:** Hawthorn

**Duration:** *Master of Engineering Science* – 2 yrs FT or 4 yrs PT

*Master of Engineering* – 1.5 yrs FT or 3 yrs PT

*Master of Technology* – 1 yr FT or 2 yrs PT

*Graduate certificate* – 0.5 yr FT or 1 yr PT

**Total course fees\*:** *Master of Engineering Science* – \$44,800

*Master of Engineering* – \$33,600

*Master of Technology* – \$22,400

*Graduate certificate* – \$11,200

**Intake:** March, August

#### Entry requirements

A Bachelor of Engineering (Civil) or equivalent with a minimum 60 per cent average.

#### Course description

This program provides students with advanced theoretical and practical knowledge about the design, procurement and asset management aspects of civil infrastructure projects. Students gain a comprehensive understanding of the issues and challenges associated with the civil engineering industry, including codes of practice; sustainability issues; environmental impacts; and financial, legal, project-management and risk considerations. The program has an applied industry focus and includes units relevant to professional practice and contemporary research in this field.

#### Career opportunities

Graduates may pursue a career as a civil or design engineer, construction manager, project engineer or manager, geotechnical engineer, water engineer or asset management engineer in a range of industries including engineering consultancy, construction, research organisations, the private sector and government authorities.

\*Fees are indicative, reviewed each year and may increase without notice. Fees do not include the student services and amenities fee.

## Civil engineering (continued)

### ▶ Master of Technology (Civil)/Master of Construction Management – C200

**Campus:** Hawthorn

**Duration:** 2 yrs FT or 4 yrs PT

**Total course fees\*:** \$44,800

**Intake:** March, August

#### Entry requirements

A Bachelor of Engineering (Civil) or equivalent plus a Graduate Certificate of Engineering (Civil) or honours, or at least two years' relevant industry experience.

#### Course description

This double degree program is for students who wish to enhance their knowledge and extend their professional development in the civil engineering and construction management fields. The program has an applied industry focus and includes units relevant to professional practice and contemporary research in these fields.

#### Career opportunities

Graduates will be prepared for roles where they lead and apply advanced technical and management skills to the design, procurement and management of building and infrastructure projects.

## Construction management

### ▶ Master of Construction Management – C092R

Incorporating:

▶ Graduate Diploma of Construction Management – C082R

▶ Graduate Certificate in Construction Management – C062R

**Campus:** Hawthorn/distance

**Duration:** *Master* – 1.5 yrs FT or 3 yrs PT

*Graduate diploma* – 1 yr FT or 2 yrs PT

*Graduate certificate* – 0.5 yr FT or 1 yr PT

**Total course fees\*:** *Master* – \$33,600

*Graduate diploma* – \$22,400

*Graduate certificate* – \$11,200

**Intake:** March, August

#### Entry requirements

A recognised bachelor degree in civil engineering, building, surveying, architecture or equivalent, with a minimum 60 per cent average.

#### Course description

This program aims to prepare students for roles managing people, equipment, materials, built environment and assets, as well as roles overseeing technological processes and with managerial aspects related to the design, construction and maintenance of buildings and civil infrastructure. It provides a structured study of advanced management theories, techniques and practices in the planning and management of building and infrastructure projects.

Students gain significant knowledge and skills in procurement and project delivery, resource planning and management, project costing, health and safety, and risk management. They also learn about the environmental, financial, legal and contractual considerations associated with project-based industries.

#### Career opportunities

Graduates may pursue careers as a construction manager, project engineer/manager, asset and facilities manager, and procurement and project delivery professional in a range of industries, including engineering and project management consultancy, construction, and oil and gas, as well as in research organisations, the private sector and government.

## Electrical and electronic engineering

### ▶ Master of Engineering Science (Electrical and Electronic) – EE103

Incorporating:

▶ Master of Engineering (Electrical and Electronic) – EE102

▶ Master of Technology (Electrical and Electronic) – EE101

▶ Graduate Certificate of Engineering (Electrical and Electronic) – EE100

**Campus:** Hawthorn

**Duration:** *Master of Engineering Science* – 2 yrs FT or 4 yrs PT

*Master of Engineering* – 1.5 yrs FT or 3 yrs PT

*Master of Technology* – 1 yr FT or 2 yrs PT

*Graduate certificate* – 0.5 yr FT or 1 yr PT

**Total course fees\*:** *Master of Engineering Science* – \$44,800

*Master of Engineering* – \$33,600

*Master of Technology* – \$22,400

*Graduate certificate* – \$11,200

**Intake:** March, August

#### Entry requirements

A recognised four-year bachelor degree in electronic, computer or communication/telecommunication engineering with a minimum 60 per cent average, or a recognised four-year bachelor degree in science in a relevant field.

#### Course description

This program focuses on four major areas of electrical and electronic engineering: power systems design safety and control, signal processing, micro-electronics and control systems. It encourages entrepreneurial thinking to foster innovation in each student's business, workplace or community. The program is designed to prepare students for future roles as an engineer with the practical experience and research skills to further progress their career in the electrical and electronics industries.

#### Career opportunities

Graduates may find employment in a range of industries, including electric and renewable energy, telecommunications, manufacturing, defence, automotive, medical imaging and testing companies, and research organisations.

---

\*Fees are indicative, reviewed each year and may increase without notice. Fees do not include the student services and amenities fee.

## Port and harbour

### ► Graduate Certificate in Engineering (Port and Harbour) – C110

**Campus:** Hawthorn

**Duration:** 1–2 yrs PT

**Total course fees\*:** \$11,200

**Intake:** March, August

#### **Entry requirements**

A Bachelor of Engineering or equivalent, or relevant qualifications and experience.

#### **Course description**

Developed in conjunction with Ports Australia, this program has been designed for students already working in the port industry. Units form a specialised subset of those offered via the civil engineering program.

#### **Career opportunities**

Graduates gain enhanced theoretical and practical knowledge to improve job performance and opportunities for career advancement in the maritime and port and harbour industry.

## Risk management

### ► Graduate Certificate in Risk Management – M077R

**Campus:** Distance

**Duration:** 0.5 yr FT or 1 yr PT

**Total course fees\*:** \$11,200

**Intake:** March, August

#### **Entry requirements**

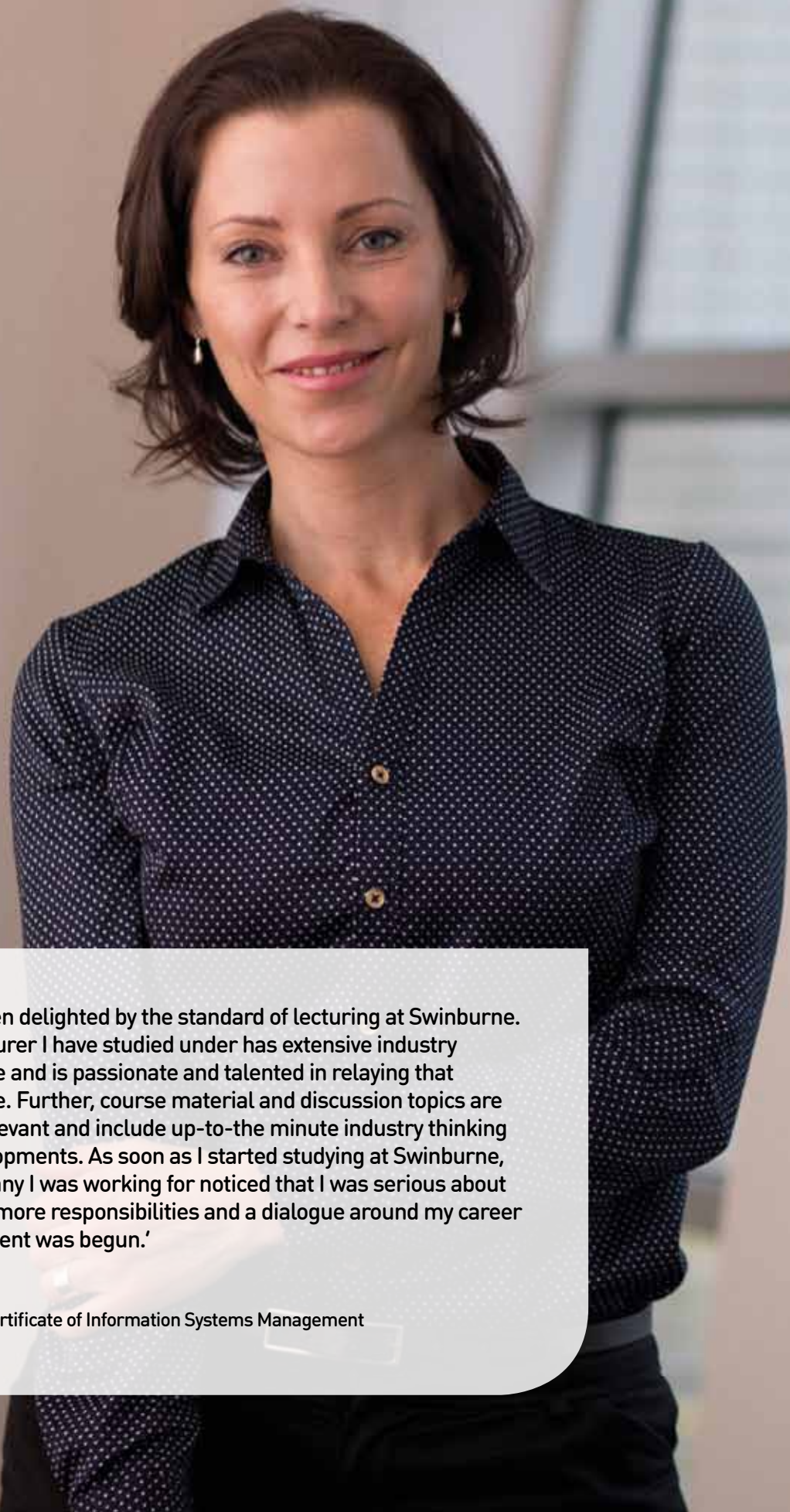
A recognised bachelor degree in engineering or equivalent. Applicants with other tertiary qualifications in related disciplines and relevant industry experience are also encouraged to apply.

#### **Course description**

This program is suitable for professionals working, or seeking to work, in risk management-related roles and responsibilities in the engineering industry. It is also designed to have considerable application for personnel in a wide range of technologically based industries, including transport (aviation, rail and shipping), heavy industry, process industries (chemical and pharmaceutical), oil and gas, mining and energy production. This course covers risk management in the areas of health, safety, plant, project, production, property, finance and environment.

#### **Career opportunities**

Graduates gain enhanced theoretical and practical knowledge to improve job performance and opportunities for career advancement in roles requiring risk management skills across a range of industries.



'I have been delighted by the standard of lecturing at Swinburne. Every lecturer I have studied under has extensive industry experience and is passionate and talented in relaying that experience. Further, course material and discussion topics are always relevant and include up-to-the minute industry thinking and developments. As soon as I started studying at Swinburne, the company I was working for noticed that I was serious about taking on more responsibilities and a dialogue around my career advancement was begun.'

**Tracey**

Graduate Certificate of Information Systems Management

# ► Information and Communication Technologies

Dynamic and constantly evolving, the field of information and communication technologies (ICT) provides exciting and challenging career opportunities. Our courses are developed in close consultation with key industry representatives and are up-to-date with the latest changes in enterprise programming, mobile application development, Oracle, MCSA, Cisco, security and eforensics, and business analysis.

## eForensics

### ► Graduate Certificate in eForensics – I077

**Campus:** Hawthorn

**Duration:** 1 yr PT

**Total course fees\*:** \$9600

**Intake:** March

#### **Entry requirements**

A recognised bachelor degree or equivalent, or relevant professional experience.

#### **Course description**

This program delivers the knowledge and skills needed to identify the occurrence of a cybercrime and to undertake the necessary action to handle evidence. Units cover sequence of acquisition, analysis, preservation, presentation and documentation suitable to an Australian court of law. Students also learn techniques to recognise and reduce the incidence of potential vulnerabilities in industry for cybercrime activity.

#### **Career opportunities**

Graduates may find employment in occupations such as law enforcement official (state, federal and Interpol), first responder, mobile computing device developer, software developer, telecommunication, network and internet security designer, consultant and administrator, systems analyst or private investigator. They may also find roles with the Department of Defence.

## Information and communication technology

### ► Professional Certificate (Information and Communication Technology) – I020

**Campus:** Hawthorn

**Duration:** 0.5 yr FT or 1 yr PT

**Total course fees\*:** \$4800

**Intake:** March, August

#### **Entry requirements**

A recognised bachelor degree in an information and communication technology (ICT) discipline, or at least three years' relevant experience.

#### **Course description**

This course is specifically designed for current IT professionals who may lack the time to complete a full postgraduate qualification. It is made up of higher education division postgraduate-level units that are tailored to the needs of students or industry groups. Specialised outcomes include software testing, web applications, networking concepts, network security, business process analysis, business intelligence and knowledge management, and information systems governance and management.

#### **Career opportunities**

Graduates will have enhanced theoretical and practical knowledge to improve job prospects and opportunities for career advancement in ICT.

---

\*Fees are indicative, reviewed each year and may increase without notice. Fees do not include the student services and amenities fee.

---



## Information systems management

### ► Master of Information Systems Management – I098

Incorporating:

- Graduate Diploma of Information Systems Management – I088
- Graduate Certificate of Information Systems Management – I078

**Campus:** Hawthorn

**Duration:** *Master* – 1.5 yrs FT or 3 yrs PT  
*Graduate diploma* – 1 yr FT or 2 yrs PT  
*Graduate certificate* – 0.5 yr FT or 1 yr PT

**Total course fees\*:** Total tuition fee depends on the combination of units selected.

Visit [www.swinburne.edu.au/fees](http://www.swinburne.edu.au/fees)

**Intake:** March, August

#### Entry requirements

A recognised bachelor degree plus at least three years' relevant professional experience.

Applicants without a relevant qualification who have at least five years' relevant work experience are also encouraged to apply.

#### Course description

This program is a comprehensive and contemporary study of management issues associated with the successful deployment of information systems (IS) and technology in organisations. It focuses on optimising business value through the management of IS and its related risks. Students are introduced to current approaches to technology management in and between contemporary organisations.

#### Career opportunities

Graduates will be prepared for roles in systems analysis, business development and project management, or as a data architect, data warehouse consultant, business intelligence analyst, statistical modeller, application integration specialist, e-business consultant, chief information officer or IT director.

#### Professional recognition

This program is accredited at the professional level by the Australian Computer Society (ACS), ensuring it meets the highest standard of the profession and the industry.

### ► Master of Information Systems Management/Master of Business Administration – A098

Incorporating:

- Graduate Diploma of Information Systems Management – I088
- Graduate Certificate of Information Systems Management – I078

**Campus:** Hawthorn

**Duration:** 2.5 yrs FT or 5 yrs PT

**Total course fees\*:** Total tuition fees depend on elective units selected.

Visit [www.swinburne.edu.au/fees](http://www.swinburne.edu.au/fees)

**Intake:** March, August

#### Entry requirements

A recognised bachelor degree plus at least three years' relevant professional experience.

#### Course description

This double degree program provides professionals with advanced skills and knowledge across the complex areas of business and information systems (IS) in organisations. It offers contemporary management knowledge and skills, and provides students with the ability to apply that knowledge in an innovative, creative and entrepreneurial way.

#### Career opportunities

Graduates may pursue senior IS and business roles, including systems analyst, business development manager, project manager, chief information officer and IT director.

#### Professional recognition

The information systems management program is accredited at the professional level by the Australian Computer Society (ACS), ensuring it meets the highest standard of the profession and the industry.

## Information technology

### ► Master of Information Technology – I091

**Campus:** Hawthorn

**Duration:** 2 yrs FT or 4 yrs PT

**Total course fees\*:** \$38,400

**Intake:** March, August

#### Entry requirements

A recognised bachelor degree. Students with a recognised bachelor degree in information and communications technology (ICT) or a graduate diploma in computer science, information systems or ICT may be eligible for advanced standing.

#### Course description

This program provides the knowledge and skills required to design, develop and maintain complex systems using state-of-the-art technologies and methodologies. It includes a general introduction to ICT and provides the opportunity for students to gain advanced specialist skills in areas such as networks, software development, and information systems analysis and management.

Students also have the opportunity to apply their skills through industry-related project work, including industry-linked projects for real clients. This project work can demonstrate students' skills and knowledge to potential future employers.

The program incorporates units from the Master of Technology (Information Technology), Graduate Diploma of Information Technology and Graduate Certificate of Information Technology.

#### Career opportunities

Graduates may find employment in roles such as enterprise systems application developer, quality assurance analyst, network designer, network administrator, network architect, web developer, project manager, multimedia developer, systems architect, business requirements analyst, systems analyst, technical writer, application integration specialist, user interface analyst, contract manager, data warehouse architect, data mining specialist or helpdesk manager.

#### Professional recognition

This program is accredited at the professional level by the Australian Computer Society (ACS), ensuring it meets the highest standard of the profession and the industry.

---

\*Fees are indicative, reviewed each year and may increase without notice. Fees do not include the student services and amenities fee.

## ► Master of Technology (Information Technology) – I061

Incorporating:

- Graduate Diploma of Information Technology – I080
- Graduate Certificate of Information Technology – I071

**Campus:** Hawthorn

**Duration:** *Master of Technology* – 1.5 yrs FT or 3 yrs PT  
*Graduate diploma* – 1 yr FT or 2 yrs PT  
*Graduate certificate* – 0.5 yr FT or 1 yr PT

**Total course fees\*:** *Master* – \$28,800  
*Graduate diploma* – \$19,200  
*Graduate certificate* – \$9,600

Note: Commonwealth supported places are available for the Master of Technology (Information Technology).

**Intake:** March, August

### Entry requirements

A recognised bachelor degree in a field other than computer science or information and communications technology (ICT). Applicants with substantial, relevant professional experience may be eligible for advanced standing.

### Course description

This program provides a general introduction to ICT as well as the opportunity to gain specialist skills in areas such as software development and business information systems.

Students also have the opportunity to apply their skills through industry-related project work, including industry-linked projects for real clients. This project work can demonstrate students' skills and knowledge to potential future employers.

### Career opportunities

Graduates may find employment in roles such as enterprise systems application developer, quality assurance analyst, network designer, network administrator, network architect, web developer, project manager, multimedia developer, systems architect, business requirements analyst, systems analyst, technical writer, application integration specialist, user interface analyst, contract manager, data warehouse architect, data mining specialist or helpdesk manager.

### Professional recognition

This program is accredited at the professional level by the Australian Computer Society (ACS), ensuring it meets the highest standard of the profession and the industry.

## Information technology business analysis

### ► Master of Information Technology Business Analysis – I197

Incorporating:

- Graduate Diploma of Information Technology Business Analysis – I187
- Graduate Certificate of Information Technology Business Analysis – I177

**Campus:** Hawthorn

**Duration:** *Master* – 2 yr FT or 4 yr PT  
*Graduate diploma* – 1 yr FT or 2 yr PT  
*Graduate certificate* – 0.5 yr FT or 1 yr PT

**Total course fees\*:** Total tuition fee depends on the combination of units selected.

Visit [www.swinburne.edu.au/fees](http://www.swinburne.edu.au/fees)

**Intake:** March, August

### Entry requirements

A recognised bachelor degree.

Applicants without a relevant qualification who have at least five years' relevant work experience are also encouraged to apply.

### Course description

The modern business analyst engages stakeholders from a broad range of business and technology disciplines. In this program students gain exposure to a broad and balanced set of information systems and business disciplines that complement this role. It aims to provide students with the skills to effectively deal with and deliver value to multiple areas of technology and business. Units cover the core disciplinary areas of the profession, including data and information modelling, process redesign and modelling, and requirements elicitation and analysis.

### Career opportunities

Graduates will be equipped to pursue a career as a business analyst. With experience, they may seek to advance to roles as senior business analysts, practice managers and business relationship managers, as well as a range of project management and enterprise architecture roles.

## Information technology project management

### ► Master of Information Technology Project Management – I198

Incorporating:

- Graduate Diploma of Information Technology Project Management – I188
- Graduate Certificate of Information Technology Project Management – I178

**Campus:** Hawthorn

**Duration:** *Master* – 1.5 yr FT or 3 yrs PT  
*Graduate diploma* – 1 yr FT or 2 yrs PT  
*Graduate certificate* – 0.5 yr FT or 1 yr PT

**Total course fees\*:** Total tuition fee depends on the combination of units selected.

Visit [www.swinburne.edu.au/fees](http://www.swinburne.edu.au/fees)

**Intake:** March, August

### Entry requirements

A recognised bachelor degree.

Applicants without a relevant qualification who have at least five years' relevant work experience are also encouraged to apply.

### Course description

This program develops students' expertise in the major domains of information and communication technology (ICT) project management. It helps students develop the skills and conceptual understanding required to manage all aspects of ICT projects. The program also explores the factors and risks under consideration to achieve successful project outcomes.

### Career opportunities

Graduates may find employment in roles such as ICT project manager, business analyst, business intelligence developer, applications manager, project resource officer, enterprise solutions architect, enterprise risk specialist, ICT risk manager or PMO manager.

### Professional recognition

This program is accredited at the professional level by the Australian Computer Society (ACS), ensuring it meets the highest standard of the profession and the industry.

## Network systems

### ► Master of Engineering Science (Network Systems and Telecommunications) – S099

Incorporating:

- Master of Science (Network Systems) – S069
- Graduate Diploma of Science (Network Systems) – S059
- Graduate Certificate of Science (Network Systems) – S049

**Campus:** Hawthorn

**Duration:** *Master of Engineering Science* – 2 yrs FT or 4 yrs PT

*Master of Science* – 1.5 yrs FT or 3 yrs PT

*Graduate diploma* – 1 yr FT or 2 yrs PT

*Graduate certificate* – 0.5 yr FT or 1 yr PT

**Total course fees\*:** *Master of Engineering Science* – \$38,400

*Master of Science* – \$28,800

*Graduate diploma* – \$19,200

*Graduate certificate* – \$9600

**Intake:** March, August

#### Entry requirements

A recognised bachelor degree in engineering, science, computing or IT. Applicants with a recognised bachelor degree in business with an information and communicate technology (ICT) emphasis are also encouraged to apply.

#### Course description

This program is designed for students who have a background in ICT, science or engineering and wish to become professional network specialists. Students gain proficiency in all aspects of wired or wireless networks and become conversant with new kinds of networking technology based on internet protocol networks and multimedia applications.

The program provides specialised knowledge in data communication networking and covers specific competencies of industry certification material such as Cisco CCNA and CCNP, and Microsoft MCSA (Solutions Associate).

#### Career opportunities

Graduates may find careers in the telecommunications or ICT industries as a network engineer, field service technician, support engineer, systems administrator, network planner, IT security firewall administrator, network architect, network designer, project implementation specialist, IT support technician, internet applications engineer, manager of internal corporate networks or security engineer.

#### Professional recognition

The Master of Science (Network Systems) is accredited at the professional level by the Australian Computer Society (ACS), ensuring it meets the highest standard of the profession and the industry. It also provides preparation towards the CCNA and CCNP certification examination as well as the MCSA (Solutions Associate) title.

---

\*Fees are indicative, reviewed each year and may increase without notice. Fees do not include the student services and amenities fee.

---

## ► Learning and Teaching

Learning and teaching courses are designed to prepare you for a teaching role across a range of settings.

### Career counselling and coaching

#### ► Graduate Diploma in Career Development – N0818

Incorporating:

#### ► Graduate Certificate in Career Development – N0718

**Campus:** Online

**Duration:** *Graduate diploma* – 1 yr FT or 2 yrs PT  
*Graduate certificate* – 0.5 yr FT or 1 yr PT

**Total course fees\*:** *Graduate diploma* – \$11,200  
*Graduate certificate* – \$5600

**Intake:** March, August

#### Entry requirements

A recognised bachelor degree in a relevant discipline plus relevant work experience. Applicants without a relevant qualification who have relevant experience are also encouraged to apply.

#### Course description

This program provides students with a comprehensive understanding of career development theory, as well as practical skills in career counselling and coaching. It is designed to help students put into practice the latest career development theory and approaches.

Students also gain the relevant accreditation to use a range of career-related assessments and best practice approaches to developing job applications, résumés and job action plans.

Students choose one specialisation from educational career practice, private practice, career development within organisations, third-age career coaching or career development in government programs.

#### Career opportunities

Graduates will be able to work in careers management roles in schools, private practice and organisations.

#### Professional recognition

The Career Industry Council of Australia (CICA) has endorsed the Graduate Certificate in Career Development and the Graduate Diploma in Career Development delivered by Swinburne University of Technology as meeting the Professional Standards for Australian Career Development Practitioners for a period of five years from July 2012 to July 2017.



## Literacy and numeracy

### ► Vocational Graduate Certificate in Adult Language, Literacy and Numeracy Practice – YTAE70110

**Campus:** Online

**Duration:** 1.5 yrs PT

**Total course fees\*:** \$4010 (government subsidised places may be available to eligible students)

**Intake:** March, August (other intakes may be available)

#### **Entry requirements**

There are no formal entry requirements. It is recommended that applicants complete Certificate IV in Training and Assessment before commencing this course.

#### **Course description**

This course is designed for those who work as language, literacy and numeracy (LLN) practitioners, or who have completed some studies in this field. It develops skills in analysis, planning, delivery, evaluation and leadership relevant to adult LLN training.

#### **Career opportunities**

Graduates may explore roles as a training practitioner, teacher, concurrent assistance teacher, adult literacy and numeracy teacher, workplace English language trainer and assessor, program coordinator or educational manager.

## Teaching

### ► Master of Teaching (Primary) – SL7E12

Incorporating:

► Graduate Diploma of Teaching (Primary) – SL6E12

**Campus:** Online

**Duration:** Master – 2 yrs FT

Graduate diploma – 1.5 yrs FT

**Total course fees\*:** *Master* – \$33,600

*Graduate diploma* – \$24,000

**Intake:** March, July, November

#### **Entry requirements**

A recognised bachelor degree. Applicants are also required to obtain a police check and working with children check.

#### **Course description**

This program provides students with the educational theories and practical skills needed to teach at any level of primary education. The program also offers understanding of the latest technology used in the classroom. Students gain professional experience through supervised placements in a primary school.

#### **Career opportunities**

Graduates may find employment in teaching positions in primary schools.

---

\*Fees are indicative, reviewed each year and may increase without notice. Fees do not include the student services and amenities fee.

---



# ▶ Media and Communications



Swinburne's media and communications program can create opportunities that give you a competitive edge in the workplace. It can help you to develop skills to enable entry into the media industry, or if you're currently in the industry, enhance your expertise.

## Media and communications

### ▶ Master of Arts (Media and Communications) – N0917

Incorporating:

- ▶ Graduate Diploma of Arts (Media and Communications) – N0817
- ▶ Graduate Certificate of Arts (Media and Communications) – N0717

**Campus:** Hawthorn

**Duration:** *Master* – 1.5 yrs FT or 3 yrs PT  
*Graduate diploma* – 1 yr FT 2 yrs PT  
*Graduate certificate* – 0.5 yr FT or 1 yr PT

**Total course fees\*:** *Master* – \$22,800  
*Graduate diploma* – \$15,200  
*Graduate certificate* – \$7600

**Intake:** March, August

#### Entry requirements

A recognised bachelor degree. Applicants without a tertiary qualification who have substantial relevant experience may be eligible to enrol at the graduate certificate level.

#### Course description

This program is designed to provide a theoretical base as well as a portfolio of skills applicable to a range of media activities. It focuses on practical learning and provides workplace experience through both placements and developing projects for real clients. The program is suitable for students interested in working in media-related industries, or students already working in the media who wish to enhance their expertise. Students can choose to focus on studies in journalism, digital content production or media studies.

#### Career opportunities

Graduates will possess writing and production skills valued in many sectors of the print, broadcasting and electronic media, such as radio production, journalism and web content creation. Graduates will be equipped with digital production skills and may find employment in the digital content industries. They may also have skills in project management and media production that may help them to find employment in the ever-changing media industries.

## Writing

### ▶ Master of Arts (Writing) – L084

Incorporating:

- ▶ Graduate Diploma of Arts (Writing) – L079
- ▶ Graduate Certificate of Arts (Writing) – L071

**Campus:** Online

**Duration:** *Master* – 1.5 yrs FT or 3 yrs PT  
*Graduate diploma* – 1 yr FT or 2 yrs PT  
*Graduate certificate* – 0.5 yr FT or 1 yr PT

**Total course fees\*:** *Master* – \$22,800  
*Graduate diploma* – \$15,200  
*Graduate certificate* – \$7600

**Intake:** March, June, August, November

#### Entry requirements

A recognised bachelor degree or postgraduate qualification, or equivalent, and/or relevant experience.

#### Course description

The program allows students to acquire the skills needed to improve their creative and professional writing. Students gain an understanding of the underlying principles and concepts of their craft and apply this through the creation of a range of writing portfolios of their choice. Students will be supported by online tutors, industry professionals and through online workshops.

#### Career opportunities

Graduates may find employment as a journalist, copywriter, digital content creator, editor or writer in jobs involving communication and publishing.



'While the degree has been challenging at times, I've been given some wonderful opportunities to work with academics whom I admire, and I have always felt as though I was part of a team of people committed to helping me bring out the best in myself. The course covers a range of topics that are relevant to my line of work, and I can honestly say that I've taken away something useful from each subject and have been able to apply it to my work with clients.'

**Kerry**  
Master of Psychology (Counselling Psychology)

# ► Psychology and Community Services

By undertaking a psychology course at Swinburne you will benefit from our blend of coursework and practice, committed teaching and state-of-the-art facilities.

## Swinburne Psychology Clinic

If you are undertaking a master or doctorate qualification, you will also have the opportunity to train in the Swinburne Psychology Clinic, the largest university psychology clinic in Australia. The clinic provides you with the experience, training and clinical skill you need to work independently.

## Clinical psychology

### ► Master of Psychology (Clinical Psychology) – N0912

**Campus:** Hawthorn

**Duration:** 4 yrs PT

**Total course fees\*:** \$40,000

Note: There are Commonwealth supported places available for this course.

**Intake:** March

Note: This course has an early application closing date of 31 October 2013 for 2014 intake.

#### Entry requirements

A recognised bachelor degree from an Australian university, or overseas qualifications recognised as equivalent by the Australian Psychological Society (APS), plus completion of a four-year sequence of study in psychology at second-class level or above in a course or courses accredited by the Australian Psychological Accreditation Council (APAC). Applicants should also have experience in face-to-face counselling or have completed significant training in counselling skills. Short-listed applicants will be required to participate in a selection interview.

#### Course description

This program provides high-level training in psychopathology, assessment and therapeutic interventions for adults and children suffering from clinical disorders such as anxiety disorder, clinical depression, schizophrenia, eating disorders, personality disorders, trauma, alcohol dependence, childhood disorders and psychogeriatric conditions.

#### Career opportunities

Graduates may gain employment in community mental health centres, psychiatric hospital settings, specialist services for particular clinical groups, schools, post-secondary education, clinical rehabilitation services and private practice.

#### Professional recognition

Graduates will be eligible for membership of the APS and for registration as a psychologist.

### ► Graduate Diploma of Science (Clinical Psychology) – N0816

**Campus:** Hawthorn

**Duration:** 2 yrs PT

**Total course fees\*:** \$20,000

**Intake:** March

Note: This course has an early application closing date of 31 October 2013 for 2014 intake.

#### Entry requirements

A master or doctoral degree in professional psychology (other than clinical psychology) from an Australian university in the past five years.

Applicants need to demonstrate academic aptitude and clinical experience equivalent to that outlined for entry into the Master of Psychology (Clinical Psychology). Preference will be given to applicants currently working in a mental health setting.

All applicants are required to participate in a selection and interview process.

#### Course description

This program is designed to meet the need for professional psychologists to re-specialise in clinical psychology. Students will be trained to assess, formulate and deliver interventions for people suffering high-prevalence mental disorders and serious mental illness. They also learn how to formulate interventions for individuals and families.

#### Career opportunities

Graduates may gain employment in community mental health centres, psychiatric hospital settings, specialist services for particular clinical groups, schools, post-secondary education, clinical rehabilitation services and private practice.

---

\*Fees are indicative, reviewed each year and may increase without notice. Fees do not include the student services and amenities fee.

---

## Counselling psychology

### ► Master of Psychology (Counselling Psychology) – N0904

**Campus:** Hawthorn

**Duration:** 4 yrs PT

**Total course fees\*:** \$40,000

**Intake:** March

Note: This course has an early application closing date of 31 October 2013 for 2014 intake.

#### Entry requirements

A recognised bachelor degree from an Australian university, or overseas qualifications recognised as equivalent by the Australian Psychological Society (APS), plus completion of a four-year sequence of study in psychology in a course approved by the Australian Psychological Accreditation Council (APAC).

Applicants with excellent results in their fourth-year undergraduate studies and relevant human services work experience may be shortlisted and interviewed by a selection panel. An order of merit for entry will be prepared, taking into account academic record; previous relevant work experience and training; and academic and professional referees' reports.

#### Course description

This program provides high-level training in counselling and assessment for professionals who provide specialist services in the areas of relationships, family, work and education.

#### Career opportunities

Graduates will be trained to work in a range of human services settings, including relationship and family counselling; community-oriented general counselling services; community health institutions; secondary and post-secondary education counselling services; rehabilitation counselling services; private practice; human services training; and research and evaluation.

#### Professional recognition

This program meets the requirements of the APS College of Counselling Psychologists for academic training. It also provides a direct means of professional registration by the Psychology Board of Australia (PBA).

Graduates are also eligible for membership of the APS and for general registration as a psychologist with the PBA.

After an additional two years of appropriate supervised practice, graduates may also be eligible for membership of the APS College of Counselling Psychologists and for counselling psychology area of practice endorsement with the PBA.

## Couple counselling

### ► Master of Social Science (Couple Counselling) – N0925

Incorporating:

► Graduate Diploma of Social Science  
(Couple Counselling) – N0825

► Graduate Certificate of Social Science  
(Couple Counselling) – N0725

**Campus:** Hawthorn and external venue (Relationships Australia Victoria, Kew)

**Duration:** *Master* – 3 yrs PT

*Graduate diploma* – 2 yrs PT

*Graduate certificate* – 1 yr PT

**Total course fees\*:** *Master* – \$22,200

*Graduate diploma* – \$14,800

*Graduate certificate* – \$7400

**Intake:** March

#### Entry requirements

A recognised bachelor degree in a cognate area such as psychology, social work, nursing, youth work, education or public health, or equivalent. Applicants with a degree in another discipline are also encouraged to apply. Preference may be given to applicants with an equivalent minimum credit average. Selection is based on an interview and the applicant's suitability for the program as determined by academic merit, work experience, referee reports and a statement outlining the applicant's reasons for applying to the program.

#### Course description

This program is run in collaboration with Relationships Australia Victoria (RAV), which has a longstanding reputation for providing evidence-based training to students and professionally qualified counsellors wanting to specialise in couple therapy. Students will be prepared for professional careers in the counselling sector with specialist knowledge and training in couple counselling. The program is both theoretical and practical, and deals with key ethical, interpersonal and familial factors that have an impact on working with human relationships. Students undertake an internship that is completed at an RAV branch in metropolitan or regional Victoria.

#### Career opportunities

Graduates will be prepared for roles in community and mental health, private practice, social work, grief counselling, pastoral care and mediation where there are shortages of suitably trained professionals who specialise in couple therapy.

#### Professional recognition

Master and graduate diploma graduates are eligible to apply for membership of the Australian Association of Relationship Counsellors (AARC).

## Family therapy

### ► Master of Social Science (Family Therapy) – N0911

Incorporating:

► Graduate Diploma of Social Science  
(Family Therapy) – N0811

► Graduate Certificate of Social Science  
(Family Therapy) – N0711

**Campus:** Hawthorn and external venue (Williams Road Family Therapy Centre)

**Duration:** *Master* – 3 yrs PT

*Graduate diploma* – 2 yrs PT

*Graduate certificate* – 1 yr PT

**Total course fees\*:** *Master* – \$22,200

*Graduate diploma* – \$14,800

*Graduate certificate* – \$7400

**Intake:** March

Note: This course has an early application closing date of 1 November 2013 for 2014 intake.

#### Entry requirements

A recognised bachelor degree in health or social sciences, or equivalent. Applicants should also have experience in family therapy and be employed in a setting where they take case responsibility for families and/or individuals. Selection is based on an interview and the applicant's suitability for the program as determined by academic merit, work experience, referee reports and completion of a four-day intensive program at Williams Road Family Therapy Centre.

#### Course description

This program builds on students' existing counselling experience and training to provide them with advanced training in family therapy skills and theoretical knowledge of family systems. Competency in systemic thinking and practices allows students to contribute to and facilitate change processes in social contexts and has direct applications across a range of workplaces and client populations.

#### Career opportunities

Graduates will be eligible for roles in family support, child protection, family counselling and mediation, Family Court counselling, marriage guidance and dispute resolution centres. They will also be equipped to work in school counselling, trauma debriefing and centres against sexual assault.

#### Professional recognition

Graduates may be eligible for clinical membership of the Australian Association of Family Therapists. This program seeks to meet the minimum training standards of the Psychotherapy and Counselling Federation of Australia (PACFA) with the exception of the requirement of 200 hours of client contact.

\*Fees are indicative, reviewed each year and may increase without notice. Fees do not include the student services and amenities fee.

## Housing management and policy

### ► Graduate Diploma of Social Science (Housing Management and Policy) – N0807

Incorporating:

- Graduate Certificate of Social Science (Housing Management and Policy) – N079

**Campus:** Distance

**Duration:** *Graduate diploma* – 3 yrs PT

*Graduate certificate* – 2 yrs PT

**Total course fees\*:** *Graduate diploma* – \$14,800

*Graduate certificate* – \$7400

**Intake:** March, August

#### **Entry requirements**

At least five years' experience in the social housing, human services, planning, property management or real estate industries, and/or a relevant recognised bachelor degree or equivalent with appropriate research skills.

#### **Course description**

This program provides knowledge and skills in research, policy development and systems of housing management. It is designed for housing managers (public, not-for-profit and private real estate), coordinators, team leaders, research and policy workers, and administrators in the public and community sectors who wish to improve their knowledge of, and skills in, housing management.

#### **Career opportunities**

Graduates will be equipped for management roles in the social housing sector, policy formulation and related fields.

## Human services – counselling

### ► Master of Social Science (Human Services – Counselling) – N0915

Incorporating:

- Graduate Diploma of Social Science (Human Services – Counselling) – N0805
- Graduate Certificate of Social Science (Human Services – Counselling) – N0705

**Campus:** Hawthorn

**Duration:** *Master* – 3 yrs PT

*Graduate diploma* – 2 yrs PT

*Graduate certificate* – 1 yr PT

**Total course fees\*:** *Master* – \$22,200

*Graduate diploma* – \$14,800

*Graduate certificate* – \$7400

**Intake:** March

#### **Entry requirements**

A recognised three-year bachelor degree or equivalent. Preference may be given to applicants with experience in human services. Selection is based on an interview and the applicant's suitability for the program as determined by academic merit, work experience, referee reports and a statement outlining the applicant's reasons for applying to the program.

#### **Course description**

This program is designed to meet the needs of those currently employed, or who wish to find employment, in human service organisations, including school welfare and education, mental health, public service, law and mediation, grief counselling, and drug and alcohol counselling. Students are taught a range of counselling skills across different therapeutic modalities that can be applied across work settings and client types.

#### **Career opportunities**

Graduates will possess the counselling skills needed to gain employment in the human services industry.

#### **Professional recognition**

This program seeks to meet the minimum training standards of the Psychotherapy and Counselling Federation of Australia (PACFA).

## Psychology

### ► Postgraduate Diploma of Psychology – N0812

**Campus:** Hawthorn

**Duration:** 1 yr FT or 2 yrs PT

**Total course fees\*:** \$20,000

**Intake:** March

Note: This course has an early application closing date of 1 November 2013 for 2014 intake.

#### **Entry requirements**

A recognised bachelor degree in psychology approved by the Australian Psychological Society (APS).

Selection is based on academic merit. Applicants may also be required to attend an interview.

#### **Course description**

This program prepares students to enter the psychology profession. It develops basic competencies in research design, analysis and psychological assessment. Students also gain an understanding of the ethical, moral, legal and social responsibilities of psychologists engaged in social and applied research, and professional practice.

#### **Career opportunities**

Graduates will be prepared for roles across a range of areas, including community health; clinical, counselling, forensic or health psychology; research and training; and human resource management.

#### **Professional recognition**

This program is recognised and accredited by the Australian Psychology Accreditation Council (APAC) as a fourth year of study in psychology. Graduates are eligible for registration as a provisional psychologist with the Psychology Board of Australia and for associate membership of the APS.



## Psychology (continued)

### ► Graduate Diploma of Psychology – N0815

**Campus:** Hawthorn

**Duration:** 3 yrs PT

**Total course fees\*:** \$27,500

**Intake:** March, August

#### **Entry requirements**

A recognised three-year bachelor degree or equivalent.

#### **Course description**

This program provides students with the theoretical grounding to undertake Australian Psychological Accreditation Council (APAC)-accredited fourth-year and higher degrees in psychology. Students are introduced to a range of topics in psychology and research design, including developmental psychology, cognition and human performance, design and measurement, as well as personality, social and abnormal psychology.

#### **Career opportunities**

Graduates will be prepared for further studies in psychology, leading to a career in professional psychology or psychological research.

#### **Professional recognition**

This program comprises an APAC-accredited major sequence in psychology.

## Statistics

### ► Master of Science (Applied Statistics) – Z193

Incorporating:

► Graduate Diploma of Science (Applied Statistics) – Z192

► Graduate Certificate of Science (Applied Statistics) – Z191

**Campus:** Hawthorn and online (graduate certificate only)

**Duration:** *Master* – 1.5 yr FT or 3 yrs PT

*Graduate diploma* – 1 yr FT or 2 yrs PT

*Graduate certificate* – 0.5 yr FT or 1 yr PT

**Total course fees\*:** *Master* – \$25,200

*Graduate diploma* – \$16,800

*Graduate certificate* – \$8400

**Intake:** February, August

#### **Entry requirements**

A recognised bachelor degree or equivalent, or relevant experience.

#### **Course description**

This program is designed for humanities and social sciences graduates who have a professional interest in the use of statistics. Graduates of other disciplines who use statistics in their work but do not have sufficient or current training in the area will also benefit from the program. Students learn practical skills as well as broad theoretical and practical knowledge in important areas of applied statistics.

#### **Career opportunities**

Graduates may find employment as a research officer in a range of areas, including government agencies, market research, education, medical and biological sciences, town planning and social research.

#### **Professional recognition**

Graduates with appropriate experience and a distinction average are eligible to apply for the award of Accredited Statistician. Graduates who have SAS experience may wish to undertake the SAS Certificated BASE Programmer exam or complete work experience with companies that use SAS.

---

\*Fees are indicative, reviewed each year and may increase without notice. Fees do not include the student services and amenities fee.

---

## ► Science



Scientific and technological knowledge is advancing at an unprecedented rate. Our postgraduate science programs have been designed in consultation with industry, providing you with theoretical principles and practical knowledge to help you move into more senior roles.

### World-ranked in physics

Our commitment to excellence in science teaching and research was reflected in our inclusion again in the 2012 Academic Ranking of World Universities (ARWU). In addition to ranking Swinburne as one of the world's top 400 research-intensive universities, the ARWU named Swinburne a top 100 research university in the field of physics.

## Astronomy

### ► Master of Science (Astronomy) – S068

Incorporating:

- Graduate Diploma of Science (Astronomy)  
– S058
- Graduate Certificate of Science (Astronomy)  
– S048

**Campus:** Online

**Duration:** *Master* – 1.5 yrs FT or 3 yrs PT

*Graduate diploma* – 1 yr FT or 2 yrs PT

*Graduate certificate* – 0.5 yr FT or 1 yr PT

**Total course fees\*:** *Master* – \$21,600

*Graduate diploma* – \$14,400

*Graduate certificate* – \$7200

**Intake:** March, August

### Entry requirements

A recognised bachelor degree or postgraduate qualification. Applicants without a relevant qualification who have substantial relevant experience may be eligible to enrol at the graduate certificate level.

### Course description

This program covers the fundamental concepts and 'big questions' of modern astronomy. It equips students with an overall understanding of modern astronomy, rather than training as a professional astronomer.

### Career opportunities

Graduates may have enhanced career opportunities in astronomy and science-related fields.

## Biotechnology

### ► Master of Science (Biotechnology) – Z012

Incorporating:

► Graduate Diploma of Science (Biotechnology) – Z011

**Campus:** Hawthorn

**Duration:** *Master* – 2 yrs FT or 4 yrs PT  
*Graduate diploma* – 1 yr FT or 2 yrs PT

**Total course fees\*:** *Master* – \$41,600  
*Graduate diploma* – \$20,800

**Intake:** March, August

#### Entry requirements

A three-year bachelor degree in a biological or chemical science such as biology, botany, zoology, agriculture, forestry, health sciences, veterinary science or chemistry with a minimum 60 per cent average.

#### Course description

This program provides an in-depth understanding of the fundamental principles of biotechnology, including molecular biology, biochemistry, microbiology, and medical, industrial, forensic, agricultural and environmental biotechnology. It allows students to study to their desired level and focus on their particular field of interest.

#### Career opportunities

Graduates may find employment as a medical laboratory scientist, scientific officer or research and development scientist in diverse fields such as biochemistry, microbiology, molecular biology, diagnostic and pathology services, pharmaceutical industries, forensic science laboratories, veterinary science, racing industry, agribusiness, wine industry and breweries, or biotechnology business. Work may also be found as a food technologist, quality assurance officer, occupational health and safety officer, scientific sales representative/executive, associate to a patent attorney, newspaper writer or in a publishing role in the field, or PhD student.

#### Professional recognition

Graduates will be eligible to apply for membership of professional associations and societies, including AusBiotech, Genetics Society of AustralAsia (GSA), Australian Society for Biochemistry and Molecular Biology (ASBMB), the Australian Society for Microbiology (ASM) and Royal Australian Chemical Institute (RACI).

### ► Master of Science (Biotechnology) Global Leadership Program – Z012L

**Campus:** Hawthorn

**Duration:** 2 yrs FT or 4 yrs PT

**Total course fees\*:** \$47,600

**Intake:** March, June, August

#### Entry requirements

A recognised bachelor degree in a biological or chemical science discipline such as biology, botany, zoology, agriculture, forestry, health sciences, veterinary science or chemistry, with a minimum 60 per cent average. Students who wish to study in the USA must obtain an appropriate visa.

#### Course description

This program offers students two professionally recognised master degrees in two years from two high-ranking institutions: a Master of Science (Biotechnology) from Swinburne and a Master of Science in Leadership from Northeastern University in Boston, USA. The program is delivered in Melbourne via a combination of face-to-face and online delivery modes. Students also have the opportunity to undertake part of the program at Northeastern, subject to application and visa requirements.

The biotechnology program comprises selected studies in molecular biology, biochemistry, microbiology, and medical, industrial, forensic, agricultural and environmental biotechnology.

The leadership program incorporates an action-learning approach to build leadership competencies and add valuable managerial skills.

#### Career opportunities

Graduates may find employment in entrepreneurial roles in biotechnology-related fields, including medicine and health, agriculture, pharmaceutical and environmental businesses, and the education sector. The program also provides the opportunity for graduates to position themselves for employment in multiple international labour markets.

## Good manufacturing practices

### ► Graduate Certificate of Science (Good Manufacturing Practices) – Z0851

**Campus:** Hawthorn

**Duration:** 0.5 yr FT or 1 yr PT

**Total course fees\*:** \$10,920

**Intake:** March, August

#### Entry requirements

A recognised four-year bachelor degree in engineering or science with a minimum 60 per cent average, or equivalent, or a recognised bachelor degree in science and relevant work experience.

#### Course description

This program provides students with the necessary skills in quality assurance and compliance to enable safe and efficacious manufacturing practices in pharmaceuticals, biotechnology, biomedical devices and other industries.

Staff from Seer Pharma Pty Ltd teach units in this program.

#### Career opportunities

The program is designed to enhance employment prospects for laboratory staff, managers and practitioners in industries where good manufacturing practices are required.

---

\*Fees are indicative, reviewed each year and may increase without notice. Fees do not include the student services and amenities fee.

## Statistics

See Master of Science (Applied Statistics) on page 44.

## Sustainability

### ► Vocational Graduate Certificate in Sustainability – H22066VIC

**Campus:** Online

**Duration:** 1–2 yrs PT

**Total course fees\*:** \$8800 (government subsidised places may be available to eligible students)

**Intake:** March, August (other intakes may be available)

#### **Entry requirements**

A recognised bachelor degree or advanced diploma, or relevant equivalent. Applicants with industry experience in a relevant field are also encouraged to apply.

#### **Course description**

This course is designed for those seeking to extend their knowledge of sustainability, including middle managers wishing to develop the sustainability profile of their company and those wanting to play an educational or advisory role in the field of sustainability. It will also suit professionals working in an environmental/sustainable development team in a corporate environment.

#### **Career opportunities**

Graduates will be sought by local, state and federal governments, and by organisations operating in areas such as land and water management, energy, design (building, manufacturing and engineering), sustainable production, plastics and chemicals, change management, environmental sustainability and social sustainability.









## ► FURTHER INFORMATION

1300 275 794  
postgrad@swinburne.edu.au  
swinburne.edu.au/postgrad

 [swinburne.edu.au/facebook](https://www.facebook.com/swinburne.edu.au)

 [swinburne.edu.au/twitter](https://twitter.com/swinburne.edu.au)

 [swinburne.edu.au/youtube](https://www.youtube.com/swinburne.edu.au)

 [swinburne.edu.au/linkedin](https://www.linkedin.com/swinburne.edu.au)

CRICOS Provider Code: 00111D

The information contained in this course guide was correct at the time of publication, July 2013. The university reserves the right to alter or amend the material contained in this guide. The information in this guide does not apply to international students. Visit [www.swinburne.edu.au/international](http://www.swinburne.edu.au/international) for information about courses for international students.