

SWIN
BUR
NE

SWINBURNE
UNIVERSITY OF
TECHNOLOGY

P2P and Grid Service Workflows

Professor Yun Yang

Workflow Technology Program

CITR – Centre for IT Research

Swinburne University of Technology

Melbourne, Australia



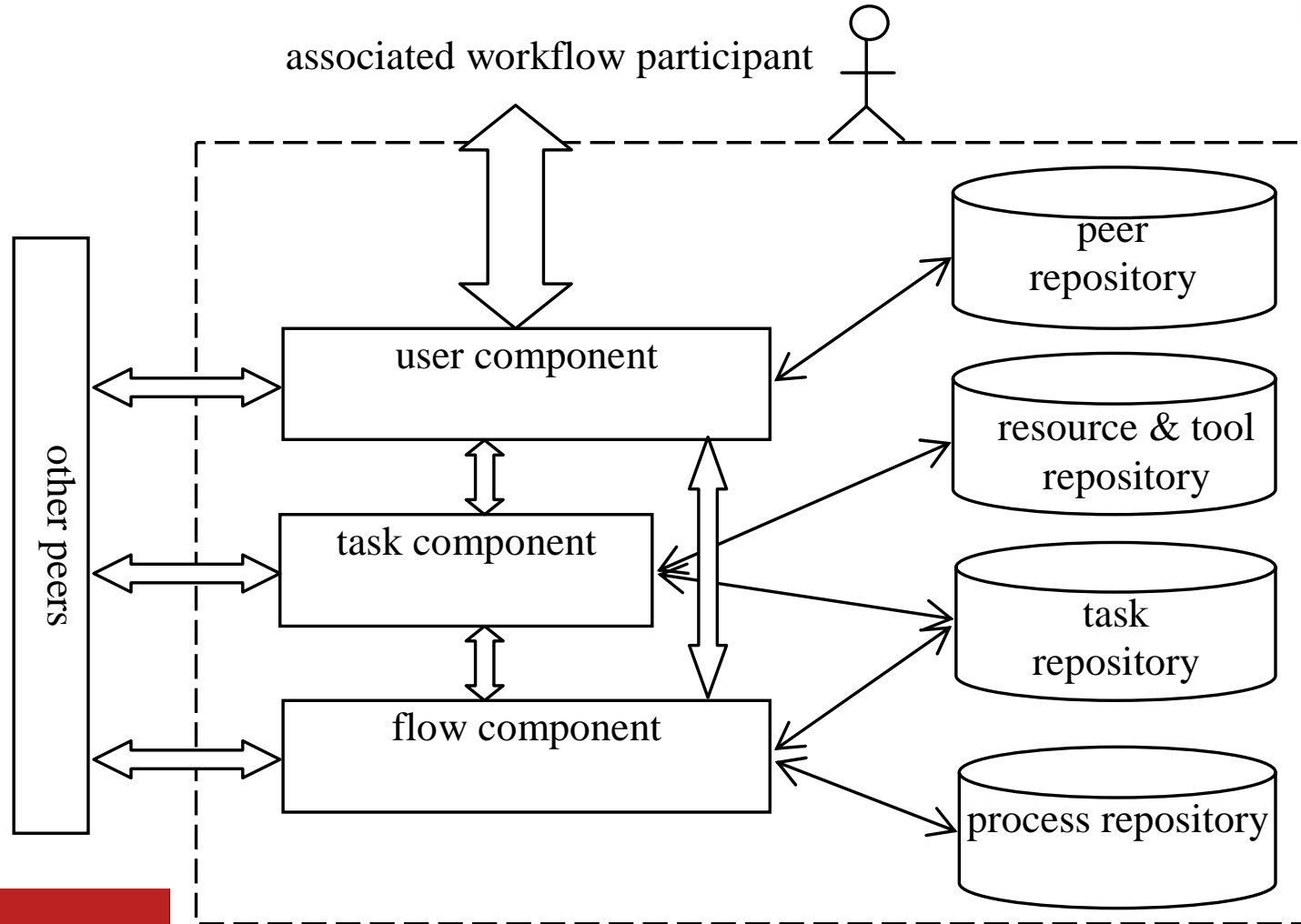
SwinDeW Workflow Series



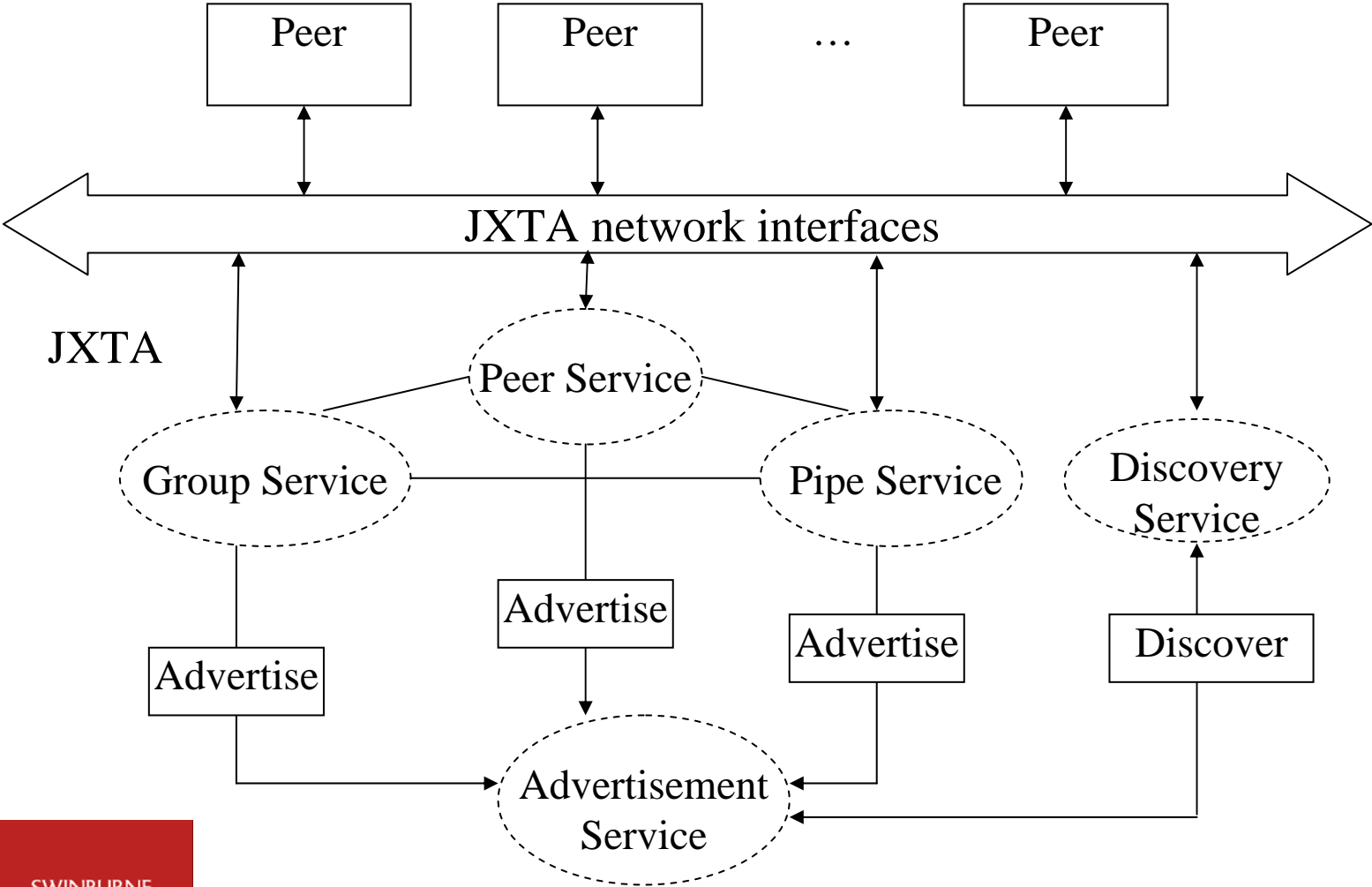
SwinDeW – *Swinburne Decentralised Workflow System*
- foundation prototype based on p2p

- SwinDeW – past
- SwinDeW-S (for Services) – past
- SwinDeW-B (for BSEL4WS) – past
- SwinDeW-A (for Agents) – current ARC DP
- SwinDeW-G (for Grid services) – current
- SwinDeW-V (for Verification) – current (pending ARC DP)

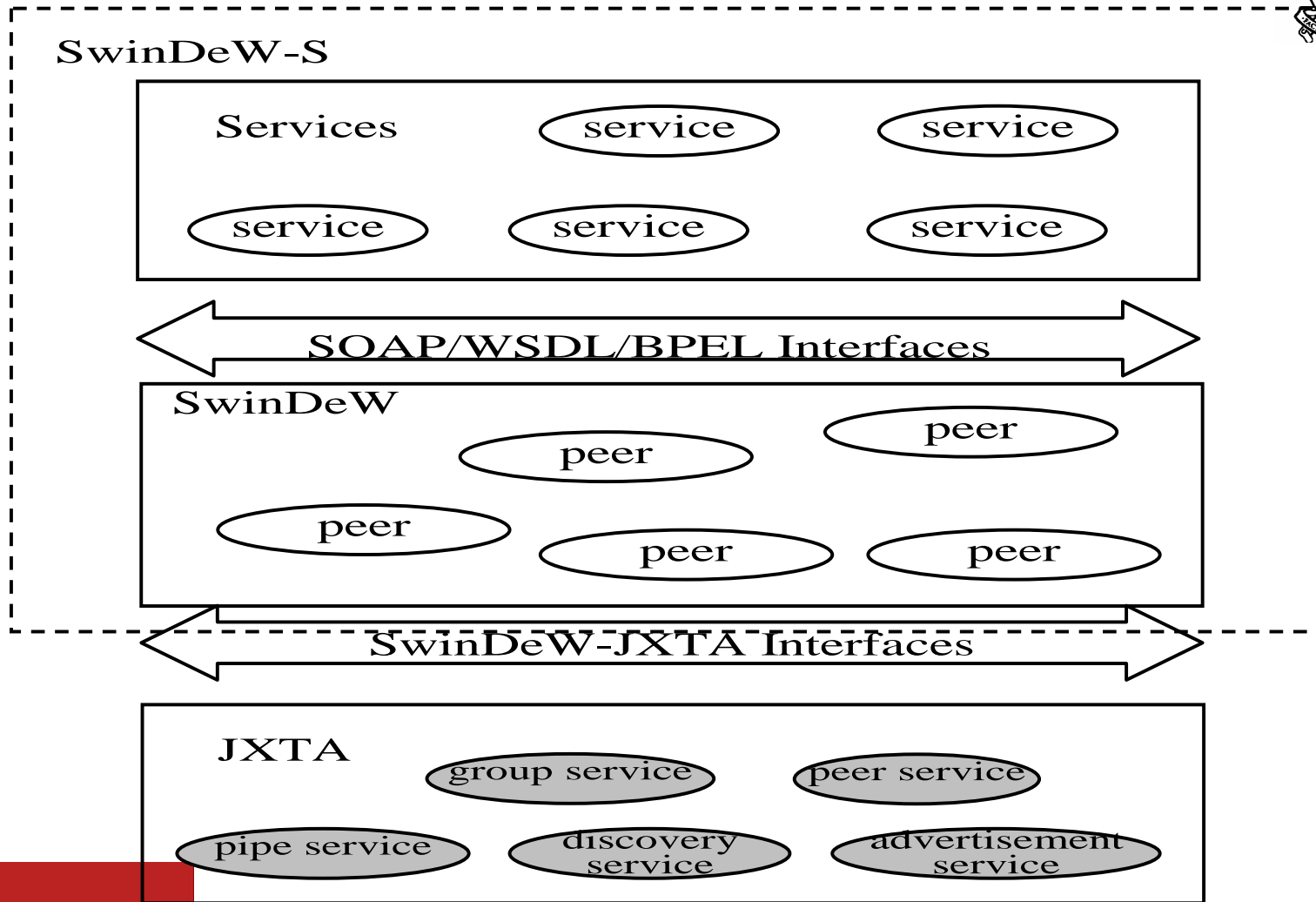
SwinDeW Peer Structure



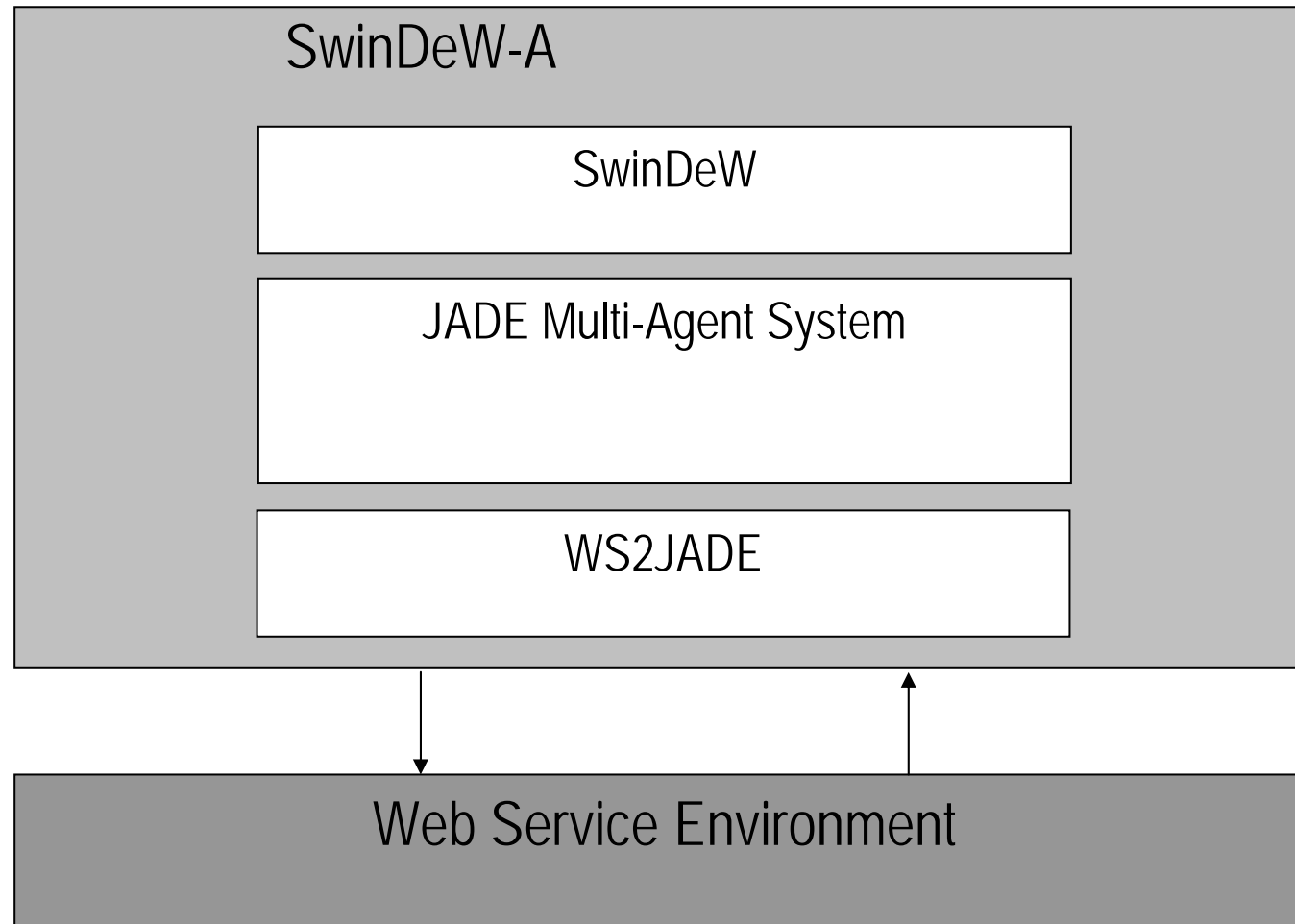
SwinDeW Architecture



SwinDeW-S (also SwinDeW-B) Architecture



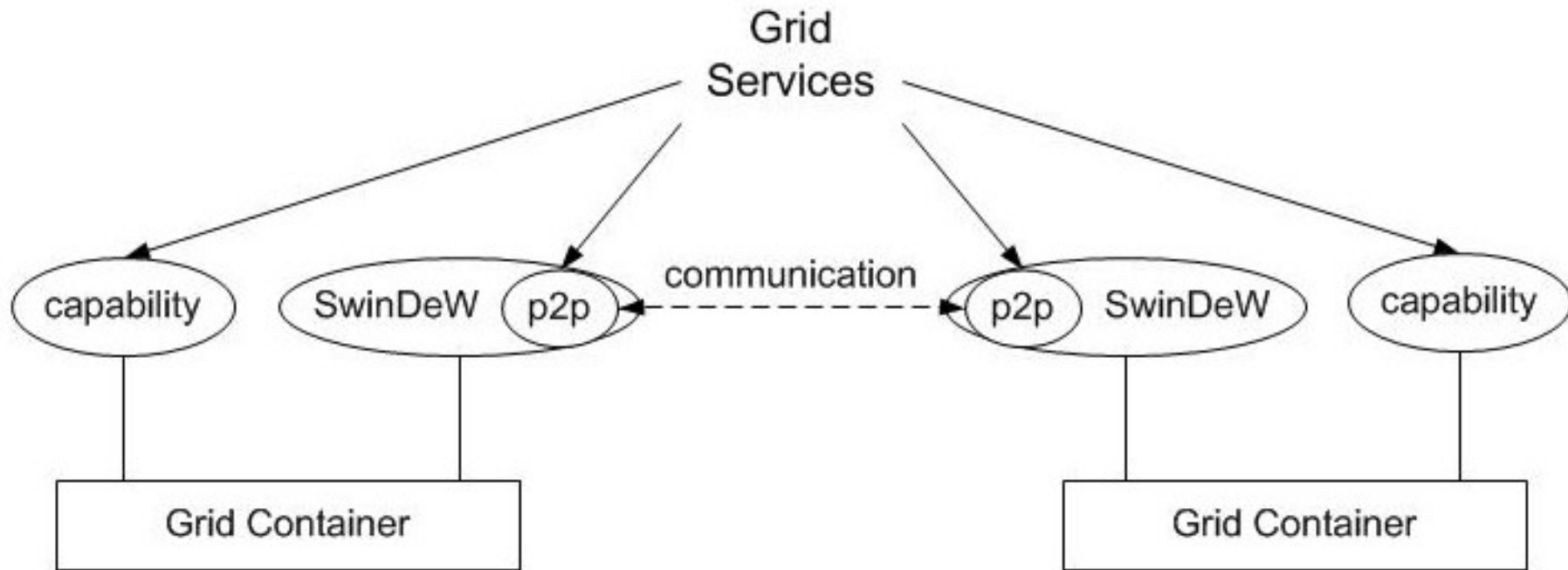
SwinDeW-A Architecture



SwinDeW-G Architecture



SwinDeW-G



SwinDeW-V Research



- Temporal constraint assignment and adjustment
 - automatic and dynamic
- Checkpoint selection for verification
 - necessary and sufficient
- Dynamic verification
 - temporal dependency
- Inconsistency removal
 - SC/WC/WI/SI vs CC/CI

Note: Will integrate with SwinDeW-G