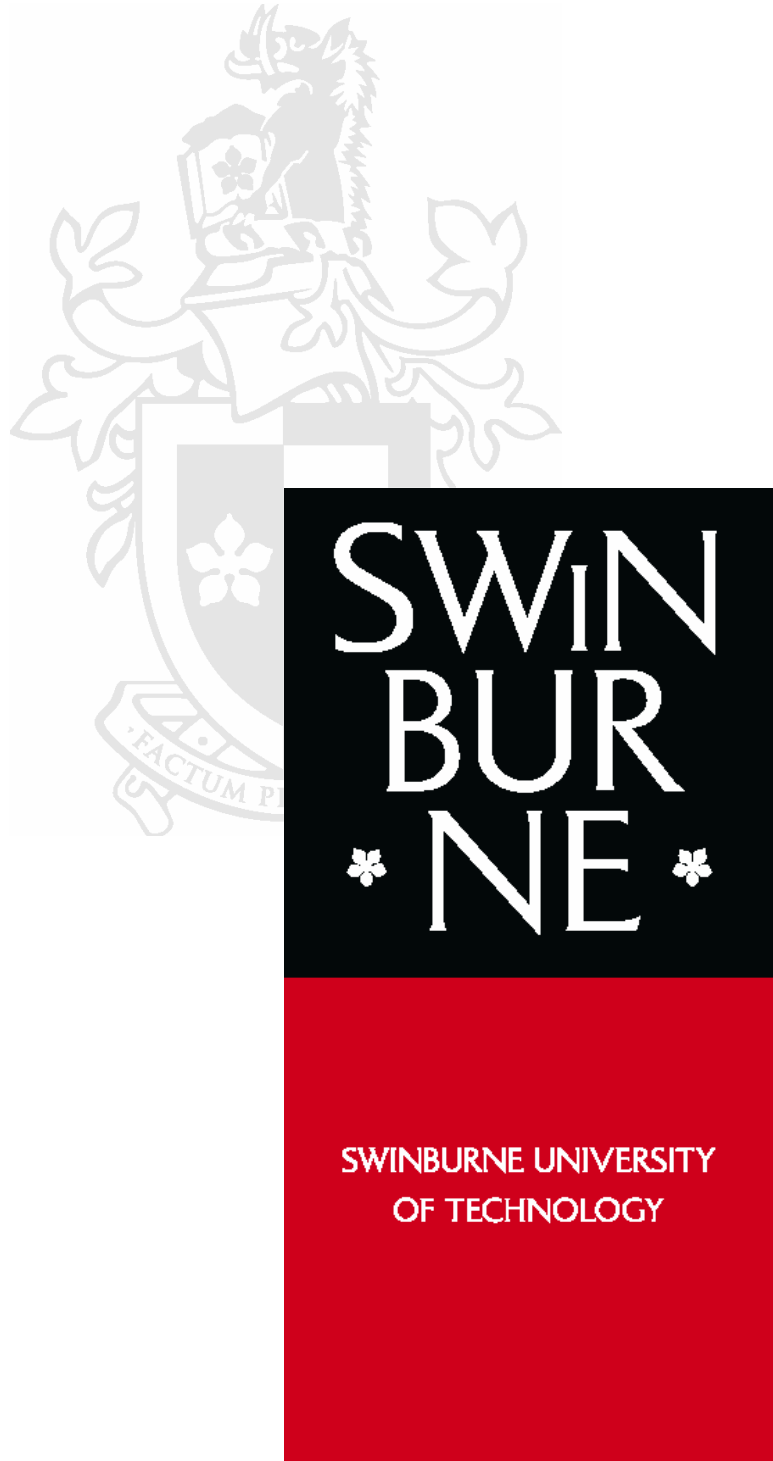


Evaluation Services
Strategic Planning & Quality Unit

Student Feedback on Subjects Survey

Higher Education Division Report

July 2007



Contents

Higher Education Division Report	5
Introduction.....	5
Higher Education Division Report	7
Subject Delivery and Assessment.....	7
Subject Delivery and Assessment.....	8
1. This subject is well organised	8
2. Information and concepts are clearly explained	9
3. This subject stimulates my curiosity to learn more about this field	10
4. I am given opportunities to apply my learning	11
5. The assessment requirements were clear	12
6. The assessment tasks align well with the subject content.....	13
7. The assessment tasks assisted my learning	14
Facilities, Resources and Materials.....	15
10. I am satisfied with the teaching spaces, facilities and equipment.....	15
11. The learning materials and resources for this subject meet my learning needs	16
Delivery Style and Feedback.....	17
12. The way that this subject is delivered suits my needs	17
13. I have received helpful feedback	18
Overall Teaching Satisfaction.....	19
14. Overall, I am satisfied with the quality of teaching in this subject	19
Overall Subject Satisfaction	20
15. Overall, I am satisfied with this subject (other than teaching).....	20
Student Commitment and Subject Difficulty	21
8. How would you describe your level of commitment to this subject?	21
9. I found the level of difficulty of this subject	22
Respondent Demographics.....	23
Gender	23
Age Range.....	24
Funding source	25
Citizenship	26
Basis of Admission	27

Higher Education Division Report

Introduction

This report summarises overall performance across the entire Division against all items in the TP1&3, 2007 Student Feedback on Subjects Survey. The aim is to provide a snapshot of the Division's performance, and also to identify areas for which improvement activities should be undertaken. Individual faculty reports have also been completed, and summary frequency reports and full reports including student comments and some demographics have been distributed to subject convenors.

A version of the updated Student Feedback on Subjects Survey, which was successfully administered in paper format during Semester 2, 2006 was launched electronically for the first time this year. For most students, the online surveys were available from May 14 through their 'My Swinburne' portal, and closed on June 25 prior to results being issued.

Subject convenors have been advised that improvement is indicated for any item which falls below 75% broad agreement. Currently, the lowest 10% of subjects in each broad field of education, (as calculated by aggregate mean of items 1-7 and 11-15) require a formal improvement plan which is tabled at the next available Academic Programs Quality Committee (APQC) meeting. This listing will be provided to faculties separately.

Please note that work is also continuing on the trial and development of a Student Feedback on Teaching survey in the second half of 2007, which will be administered as a paper survey.

An Excel spreadsheet including mean results for all Faculty subjects for each survey item is being distributed with this report and copies of all subject reports sent to the Dean.

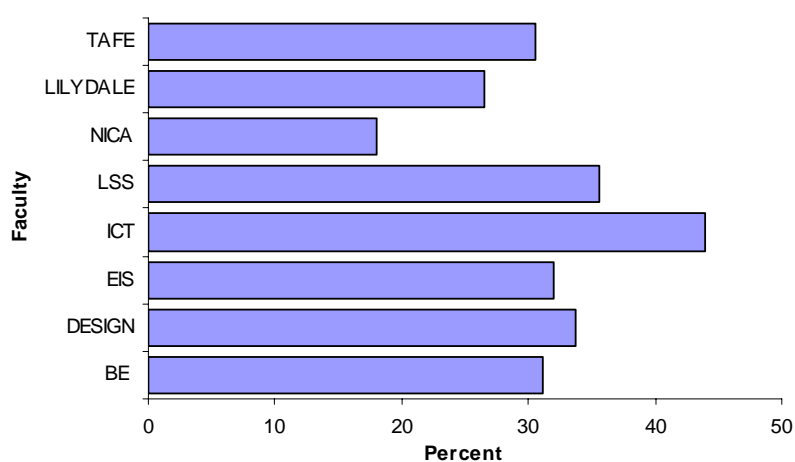
Please direct any comments or suggestions on the content of this report to Lisa Bolton on 9214 5331, or e-mail (lbolton@swin.edu.au), or to Adele Drago on 9214 5416, email (adrago@swin.edu.au).

Higher Education Division Report

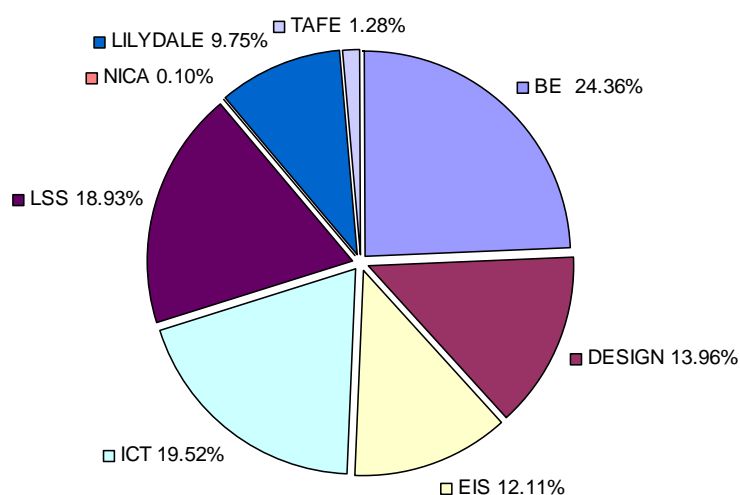
Response Rates

	Frequency	Percent	Valid Percent
Valid Business & Enterprise	3360	24.4	24.4
Design	1925	14.0	14.0
Engineering & Industrial Sciences	1670	12.1	12.1
Information & Communication Technologies	2692	19.5	19.5
Life & Social Sciences	2612	18.9	18.9
NICA	14	.1	.1
Swinburne at Lilydale	1345	9.8	9.8
TAFE	176	1.3	1.3
Total	13794	100.0	100.0

Reponse Rates by Faculty



Proportion of Total Responses

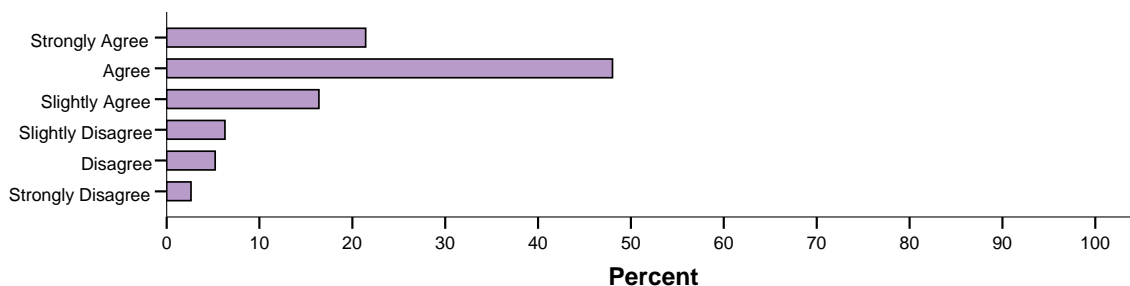


Subject Delivery and Assessment

1. This subject is well organised

		Frequency	Percent	Valid Percent
Valid	Not applicable	19	.1	.1
	Broadly Disagree	1949	14.1	14.1
	Broadly Agree	11826	85.7	85.7
Total		13794	100.0	100.0

This subject is well organised



Faculty	Not applicable		Broadly Disagree		Broadly Agree	
	Count	%	Count	%	Count	%
Business & Enterprise	1	.0%	470	14.0%	2889	86.0%
Design	5	.3%	319	16.6%	1601	83.2%
Engineering & Industrial Sciences	1	.1%	258	15.4%	1411	84.5%
Information & Communication Technologies	10	.4%	361	13.4%	2321	86.2%
Life & Social Sciences			316	12.1%	2296	87.9%
NICA			4	28.6%	10	71.4%
Swinburne at Lilydale	2	.1%	206	15.3%	1137	84.5%
TAFE			15	8.5%	161	91.5%

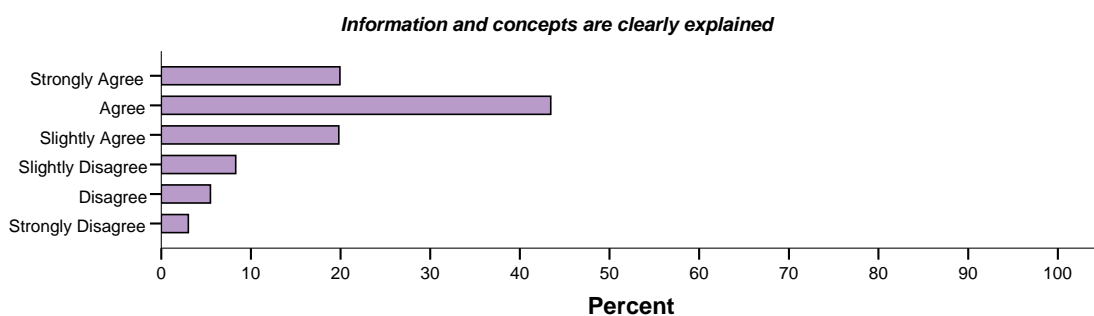
Descriptive Statistics

This subject is well organised

Faculty	Mean	N	Std. Deviation
Business & Enterprise	4.65	3359	1.162
Design	4.58	1920	1.222
Engineering & Industrial Sciences	4.60	1669	1.191
Information & Communication Technologies	4.65	2682	1.160
Life & Social Sciences	4.81	2612	1.168
NICA	4.21	14	1.762
Swinburne at Lilydale	4.61	1343	1.262
TAFE	4.91	176	1.041
Total	4.66	13775	1.187

2. Information and concepts are clearly explained

		Frequency	Percent	Valid Percent
Valid	Not applicable	15	.1	.1
	Broadly Disagree	2317	16.8	16.8
	Broadly Agree	11462	83.1	83.1
	Total	13794	100.0	100.0



Faculty	Not applicable		Broadly Disagree		Broadly Agree	
	Count	%	Count	%	Count	%
Business & Enterprise	1	.0%	579	17.2%	2780	82.7%
Design	4	.2%	378	19.6%	1543	80.2%
Engineering & Industrial Sciences	2	.1%	328	19.6%	1340	80.2%
Information & Communication Technologies	6	.2%	413	15.3%	2273	84.4%
Life & Social Sciences	2	.1%	363	13.9%	2247	86.0%
NICA			4	28.6%	10	71.4%
Swinburne at Lilydale			235	17.5%	1110	82.5%
TAFE			17	9.7%	159	90.3%

Descriptive Statistics

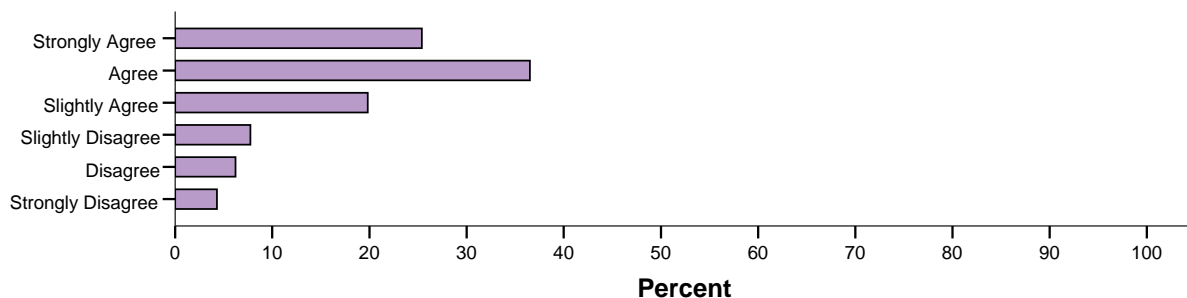
Information and concepts are clearly explained

Faculty	Mean	N	Std. Deviation
Business & Enterprise	4.53	3359	1.230
Design	4.45	1921	1.255
Engineering & Industrial Sciences	4.42	1668	1.252
Information & Communication Technologies	4.61	2686	1.188
Life & Social Sciences	4.68	2610	1.202
NICA	4.36	14	1.737
Swinburne at Lilydale	4.49	1345	1.248
TAFE	4.93	176	1.045
Total	4.55	13779	1.227

3. This subject stimulates my curiosity to learn more about this field

		Frequency	Percent	Valid Percent
Valid	Not applicable	48	.3	.3
	Broadly Disagree	2512	18.2	18.2
	Broadly Agree	11232	81.4	81.4
	Total	13792	100.0	100.0
Missing	System	2	.0	
Total		13794	100.0	

This subject stimulates my curiosity to learn more about this field



Faculty	Not applicable		Broadly Disagree		Broadly Agree	
	Count	%	Count	%	Count	%
Business & Enterprise	9	.3%	646	19.2%	2705	80.5%
Design	6	.3%	303	15.7%	1616	83.9%
Engineering & Industrial Sciences	4	.2%	396	23.7%	1270	76.0%
Information & Communication Technologies	18	.7%	392	14.6%	2280	84.8%
Life & Social Sciences	8	.3%	426	16.3%	2178	83.4%
NICA			3	21.4%	11	78.6%
Swinburne at Lilydale	1	.1%	328	24.4%	1016	75.5%
TAFE	2	1.1%	18	10.2%	156	88.6%

Descriptive Statistics

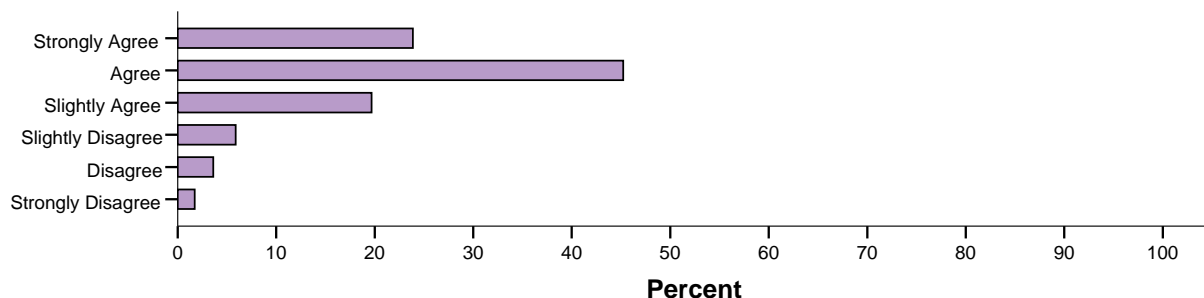
This subject stimulates my curiosity to learn more about this field

Faculty	Mean	N	Std. Deviation
Business & Enterprise	4.49	3351	1.319
Design	4.69	1919	1.313
Engineering & Industrial Sciences	4.33	1666	1.409
Information & Communication Technologies	4.64	2672	1.241
Life & Social Sciences	4.66	2604	1.350
NICA	4.64	14	1.646
Swinburne at Lilydale	4.27	1344	1.466
TAFE	5.01	174	1.099
Total	4.54	13744	1.342

4. I am given opportunities to apply my learning

		Frequency	Percent	Valid Percent
Valid	Not applicable	57	.4	.4
	Broadly Disagree	1543	11.2	11.2
	Broadly Agree	12193	88.4	88.4
	Total	13793	100.0	100.0
Missing	System	1	.0	
Total		13794	100.0	

I am given opportunities to apply my learning



Faculty	Not applicable		Broadly Disagree		Broadly Agree	
	Count	%	Count	%	Count	%
Business & Enterprise	14	.4%	406	12.1%	2940	87.5%
Design	9	.5%	180	9.4%	1736	90.2%
Engineering & Industrial Sciences	5	.3%	264	15.8%	1401	83.9%
Information & Communication Technologies	17	.6%	246	9.1%	2428	90.2%
Life & Social Sciences	8	.3%	267	10.2%	2337	89.5%
NICA			2	14.3%	12	85.7%
Swinburne at Lilydale	2	.1%	168	12.5%	1175	87.4%
TAFE	2	1.1%	10	5.7%	164	93.2%

Descriptive Statistics

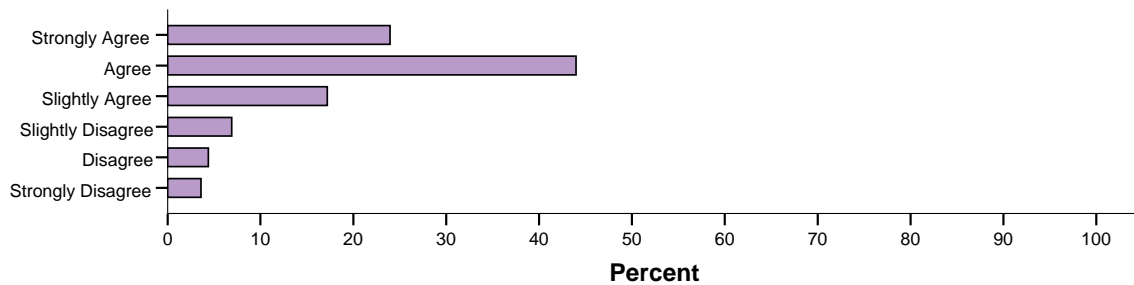
I am given opportunities to apply my learning

Faculty	Mean	N	Std. Deviation
Business & Enterprise	4.66	3346	1.097
Design	4.91	1916	1.061
Engineering & Industrial Sciences	4.57	1665	1.195
Information & Communication Technologies	4.80	2674	1.021
Life & Social Sciences	4.82	2604	1.097
NICA	4.71	14	1.541
Swinburne at Lilydale	4.67	1343	1.144
TAFE	5.09	174	.973
Total	4.75	13736	1.100

5. The assessment requirements were clear

		Frequency	Percent	Valid Percent
Valid	Not applicable	31	.2	.2
	Broadly Disagree	2048	14.8	14.8
	Broadly Agree	11714	84.9	84.9
	Total	13793	100.0	100.0
Missing	System	1	.0	
Total		13794	100.0	

The assessment requirements were clear



Faculty	Not applicable		Broadly Disagree		Broadly Agree	
	Count	%	Count	%	Count	%
Business & Enterprise	9	.3%	519	15.4%	2832	84.3%
Design	4	.2%	343	17.8%	1578	82.0%
Engineering & Industrial Sciences	6	.4%	243	14.6%	1421	85.1%
Information & Communication Technologies	6	.2%	348	12.9%	2337	86.8%
Life & Social Sciences	4	.2%	377	14.4%	2231	85.4%
NICA			4	28.6%	10	71.4%
Swinburne at Lilydale	2	.1%	199	14.8%	1144	85.1%
TAFE			15	8.5%	161	91.5%

Descriptive Statistics

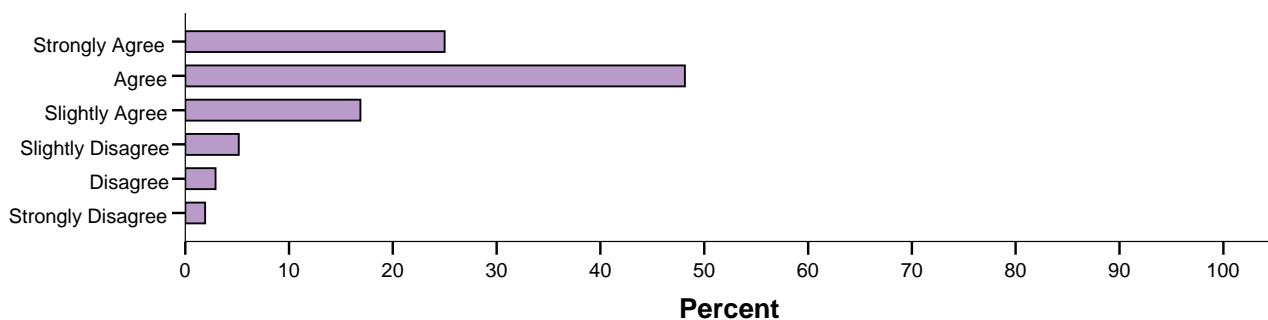
The assessment requirements were clear

Faculty	Mean	N	Std. Deviation
Business & Enterprise	4.62	3351	1.246
Design	4.54	1921	1.259
Engineering & Industrial Sciences	4.68	1664	1.246
Information & Communication Technologies	4.68	2685	1.203
Life & Social Sciences	4.74	2608	1.247
NICA	4.21	14	1.968
Swinburne at Lilydale	4.62	1343	1.247
TAFE	4.91	176	1.058
Total	4.65	13762	1.240

6. The assessment tasks align well with the subject content

		Frequency	Percent	Valid Percent
Valid	Not applicable	68	.5	.5
	Broadly Disagree	1373	10.0	10.0
	Broadly Agree	12353	89.6	89.6
	Total	13794	100.0	100.0

The assessment tasks align well with the subject content



Faculty	Not applicable		Broadly Disagree		Broadly Agree	
	Count	%	Count	%	Count	%
Business & Enterprise	13	.4%	357	10.6%	2990	89.0%
Design	16	.8%	181	9.4%	1728	89.8%
Engineering & Industrial Sciences	9	.5%	170	10.2%	1491	89.3%
Information & Communication Technologies	17	.6%	266	9.9%	2409	89.5%
Life & Social Sciences	10	.4%	236	9.0%	2366	90.6%
NICA			4	28.6%	10	71.4%
Swinburne at Lilydale	3	.2%	150	11.2%	1192	88.6%
TAFE			9	5.1%	167	94.9%

Descriptive Statistics

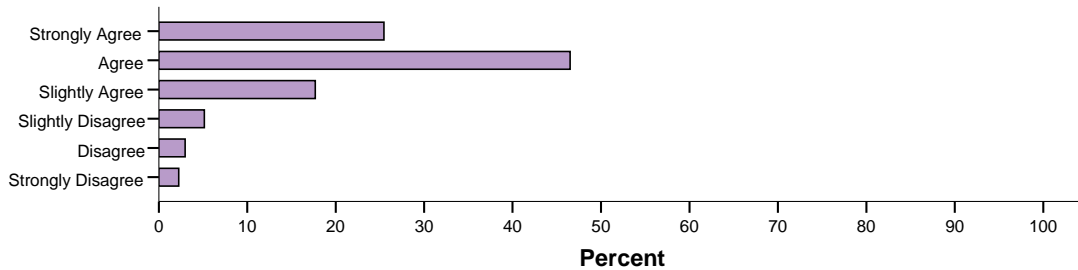
The assessment tasks align well with the subject content

Faculty	Mean	N	Std. Deviation
Business & Enterprise	4.75	3347	1.061
Design	4.85	1909	1.054
Engineering & Industrial Sciences	4.82	1661	1.092
Information & Communication Technologies	4.79	2675	1.061
Life & Social Sciences	4.89	2602	1.099
NICA	4.21	14	1.929
Swinburne at Lilydale	4.75	1342	1.112
TAFE	5.12	176	.896
Total	4.81	13726	1.077

7. The assessment tasks assisted my learning

		Frequency	Percent	Valid Percent
Valid	Not applicable	66	.5	.5
	Broadly Disagree	1423	10.3	10.3
	Broadly Agree	12304	89.2	89.2
	Total	13793	100.0	100.0
Missing	System	1	.0	
Total		13794	100.0	

The assessment tasks assisted my learning



Faculty	Not applicable		Broadly Disagree		Broadly Agree	
	Count	%	Count	%	Count	%
Business & Enterprise	13	.4%	380	11.3%	2967	88.3%
Design	12	.6%	224	11.6%	1689	87.7%
Engineering & Industrial Sciences	13	.8%	173	10.4%	1484	88.9%
Information & Communication Technologies	19	.7%	229	8.5%	2443	90.8%
Life & Social Sciences	6	.2%	234	9.0%	2372	90.8%
NICA			3	21.4%	11	78.6%
Swinburne at Lilydale	3	.2%	170	12.6%	1172	87.1%
TAFE			10	5.7%	166	94.3%

Descriptive Statistics

The assessment tasks assisted my learning

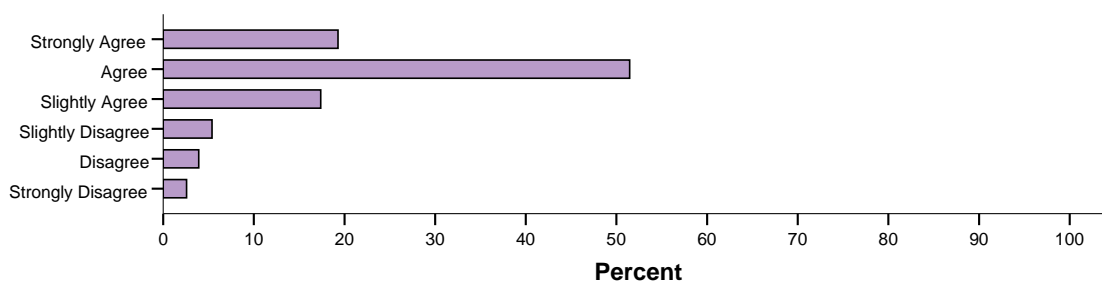
Faculty	Mean	N	Std. Deviation
Business & Enterprise	4.72	3347	1.093
Design	4.82	1913	1.153
Engineering & Industrial Sciences	4.77	1657	1.124
Information & Communication Technologies	4.86	2672	1.052
Life & Social Sciences	4.86	2606	1.090
NICA	4.43	14	1.910
Swinburne at Lilydale	4.68	1342	1.162
TAFE	5.14	176	.982
Total	4.80	13727	1.106

Facilities, Resources and Materials

10. I am satisfied with the teaching spaces, facilities and equipment

		Frequency	Percent	Valid Percent
Valid	Not applicable	91	.7	.7
	Broadly Disagree	1628	11.8	11.8
	Broadly Agree	12075	87.5	87.5
	Total	13794	100.0	100.0

I am satisfied with the teaching spaces, facilities and equipment



Faculty	Not applicable		Broadly Disagree		Broadly Agree	
	Count	%	Count	%	Count	%
Business & Enterprise	9	.3%	402	12.0%	2949	87.8%
Design	21	1.1%	268	13.9%	1636	85.0%
Engineering & Industrial Sciences	15	.9%	214	12.8%	1441	86.3%
Information & Communication Technologies	10	.4%	301	11.2%	2381	88.4%
Life & Social Sciences	24	.9%	278	10.6%	2310	88.4%
NICA					14	100.0%
Swinburne at Lilydale	5	.4%	151	11.2%	1189	88.4%
TAFE	7	4.0%	14	8.0%	155	88.1%

Descriptive Statistics

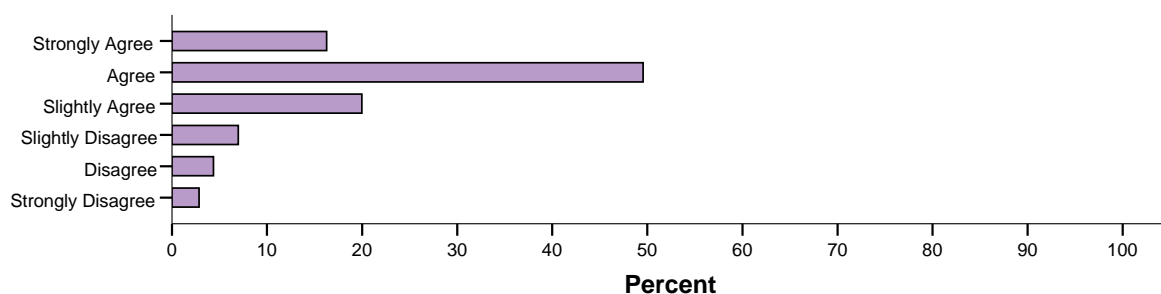
I am satisfied with the teaching spaces, facilities and equipment

Faculty	Mean	N	Std. Deviation
Business & Enterprise	4.65	3351	1.098
Design	4.62	1904	1.148
Engineering & Industrial Sciences	4.65	1655	1.160
Information & Communication Technologies	4.68	2682	1.104
Life & Social Sciences	4.80	2588	1.110
NICA	5.07	14	.616
Swinburne at Lilydale	4.72	1340	1.123
TAFE	5.00	169	.957
Total	4.69	13703	1.119

11. The learning materials and resources for this subject meet my learning needs

		Frequency	Percent	Valid Percent
Valid	Not applicable	87	.6	.6
	Broadly Disagree	1945	14.1	14.1
	Broadly Agree	11761	85.3	85.3
Total		13793	100.0	100.0
Missing	System	1	.0	
Total		13794	100.0	

The learning materials and resources for this subject meet my learning needs



Faculty	Not applicable		Broadly Disagree		Broadly Agree	
	Count	%	Count	%	Count	%
Business & Enterprise	6	.2%	489	14.6%	2865	85.3%
Design	26	1.4%	289	15.0%	1610	83.6%
Engineering & Industrial Sciences	13	.8%	280	16.8%	1377	82.5%
Information & Communication Technologies	19	.7%	357	13.3%	2315	86.0%
Life & Social Sciences	15	.6%	308	11.8%	2289	87.6%
NICA	2	14.3%	2	14.3%	10	71.4%
Swinburne at Lilydale	5	.4%	208	15.5%	1132	84.2%
TAFE	1	.6%	12	6.8%	163	92.6%

Descriptive Statistics

The learning materials and resources for this subject meet my learning needs

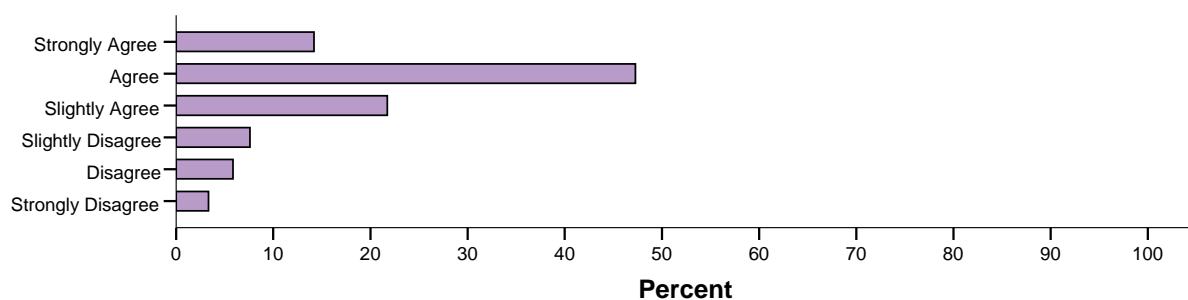
Faculty	Mean	N	Std. Deviation
Business & Enterprise	4.54	3354	1.139
Design	4.54	1899	1.134
Engineering & Industrial Sciences	4.48	1657	1.207
Information & Communication Technologies	4.60	2672	1.120
Life & Social Sciences	4.69	2597	1.126
NICA	4.67	12	1.371
Swinburne at Lilydale	4.56	1340	1.192
TAFE	4.98	175	.940
Total	4.58	13706	1.146

Delivery Style and Feedback

12. The way that this subject is delivered suits my needs

		Frequency	Percent	Valid Percent
Valid	Not applicable	54	.4	.4
	Broadly Disagree	2307	16.7	16.7
	Broadly Agree	11433	82.9	82.9
	Total	13794	100.0	100.0

The way that this subject is delivered suits my needs



Faculty	Not applicable		Broadly Disagree		Broadly Agree	
	Count	%	Count	%	Count	%
Business & Enterprise	7	.2%	604	18.0%	2749	81.8%
Design	10	.5%	353	18.3%	1562	81.1%
Engineering & Industrial Sciences	9	.5%	335	20.1%	1326	79.4%
Information & Communication Technologies	15	.6%	367	13.6%	2310	85.8%
Life & Social Sciences	10	.4%	384	14.7%	2218	84.9%
NICA			2	14.3%	12	85.7%
Swinburne at Lilydale	3	.2%	247	18.4%	1095	81.4%
TAFE			15	8.5%	161	91.5%

Descriptive Statistics

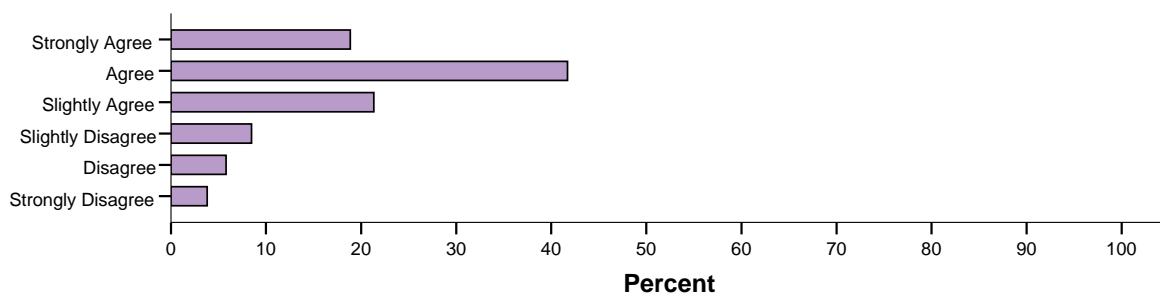
The way that this subject is delivered suits my needs

Faculty	Mean	N	Std. Deviation
Business & Enterprise	4.39	3353	1.205
Design	4.43	1915	1.242
Engineering & Industrial Sciences	4.34	1661	1.248
Information & Communication Technologies	4.53	2677	1.109
Life & Social Sciences	4.59	2602	1.175
NICA	4.50	14	1.454
Swinburne at Lilydale	4.42	1342	1.251
TAFE	4.90	176	1.009
Total	4.46	13740	1.198

13. I have received helpful feedback

		Frequency	Percent	Valid Percent
Valid	Not applicable	271	2.0	2.0
	Broadly Disagree	2446	17.7	17.7
	Broadly Agree	11077	80.3	80.3
	Total	13794	100.0	100.0

I have received helpful feedback



Faculty	Not applicable		Broadly Disagree		Broadly Agree	
	Count	%	Count	%	Count	%
Business & Enterprise	66	2.0%	617	18.4%	2677	79.7%
Design	13	.7%	322	16.7%	1590	82.6%
Engineering & Industrial Sciences	38	2.3%	405	24.3%	1227	73.5%
Information & Communication Technologies	45	1.7%	396	14.7%	2251	83.6%
Life & Social Sciences	91	3.5%	422	16.2%	2099	80.4%
NICA			3	21.4%	11	78.6%
Swinburne at Lilydale	14	1.0%	267	19.9%	1064	79.1%
TAFE	4	2.3%	14	8.0%	158	89.8%

Report

I have received helpful feedback

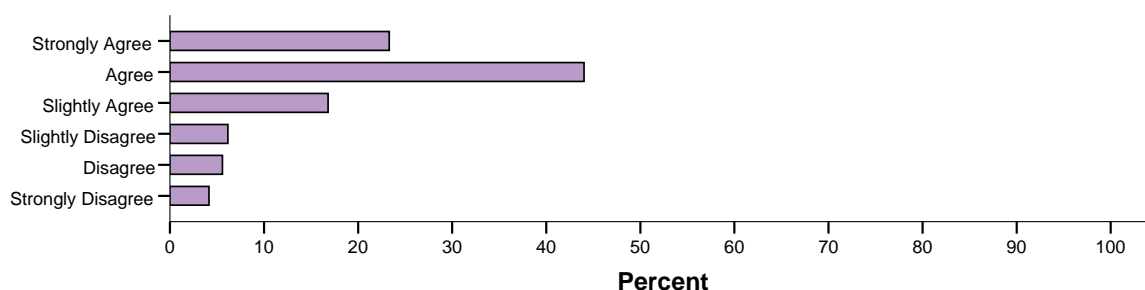
Faculty	Mean	N	Std. Deviation
Business & Enterprise	4.42	3294	1.244
Design	4.58	1912	1.264
Engineering & Industrial Sciences	4.25	1632	1.334
Information & Communication Technologies	4.53	2647	1.179
Life & Social Sciences	4.56	2521	1.291
NICA	4.64	14	1.393
Swinburne at Lilydale	4.45	1331	1.331
TAFE	4.92	172	1.015
Total	4.48	13523	1.266

Overall Teaching Satisfaction

14. Overall, I am satisfied with the quality of teaching in this subject

		Frequency	Percent	Valid Percent
Valid	Not applicable	44	.3	.3
	Broadly Disagree	2183	15.8	15.8
	Broadly Agree	11567	83.9	83.9
	Total	13794	100.0	100.0

Overall, I am satisfied with the quality of teaching in this subject



Faculty	Not applicable		Broadly Disagree		Broadly Agree	
	Count	%	Count	%	Count	%
Business & Enterprise	8	.2%	585	17.4%	2767	82.4%
Design	8	.4%	306	15.9%	1611	83.7%
Engineering & Industrial Sciences	3	.2%	312	18.7%	1355	81.1%
Information & Communication Technologies	10	.4%	383	14.2%	2299	85.4%
Life & Social Sciences	9	.3%	338	12.9%	2265	86.7%
NICA			1	7.1%	13	92.9%
Swinburne at Lilydale	3	.2%	243	18.1%	1099	81.7%
TAFE	3	1.7%	15	8.5%	158	89.8%

Descriptive Statistics

Overall, I am satisfied with the quality of teaching in this subject

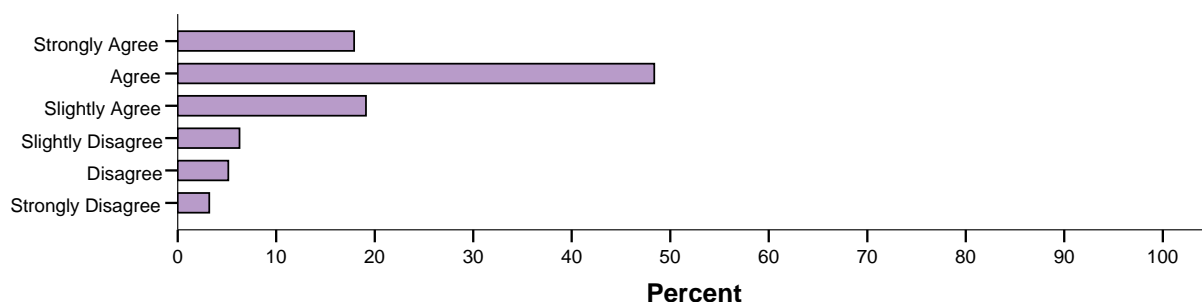
Faculty	Mean	N	Std. Deviation
Business & Enterprise	4.52	3352	1.323
Design	4.67	1917	1.287
Engineering & Industrial Sciences	4.44	1667	1.311
Information & Communication Technologies	4.61	2682	1.233
Life & Social Sciences	4.77	2603	1.233
NICA	5.00	14	1.414
Swinburne at Lilydale	4.58	1342	1.360
TAFE	5.06	173	1.088
Total	4.61	13750	1.289

Overall Subject Satisfaction

15. Overall, I am satisfied with this subject (other than teaching)

		Frequency	Percent	Valid Percent
Valid	Not applicable	73	.5	.5
	Broadly Disagree	2005	14.5	14.5
	Broadly Agree	11716	84.9	84.9
	Total	13794	100.0	100.0

Overall, I am satisfied with this subject (other than teaching)



Faculty	Not applicable		Broadly Disagree		Broadly Agree	
	Count	%	Count	%	Count	%
Business & Enterprise	24	.7%	491	14.6%	2845	84.7%
Design	15	.8%	318	16.5%	1592	82.7%
Engineering & Industrial Sciences	7	.4%	287	17.2%	1376	82.4%
Information & Communication Technologies	15	.6%	336	12.5%	2341	87.0%
Life & Social Sciences	6	.2%	345	13.2%	2261	86.6%
NICA			2	14.3%	12	85.7%
Swinburne at Lilydale	5	.4%	216	16.1%	1124	83.6%
TAFE	1	.6%	10	5.7%	165	93.8%

Descriptive Statistics

Overall, I am satisfied with this subject (other than teaching)

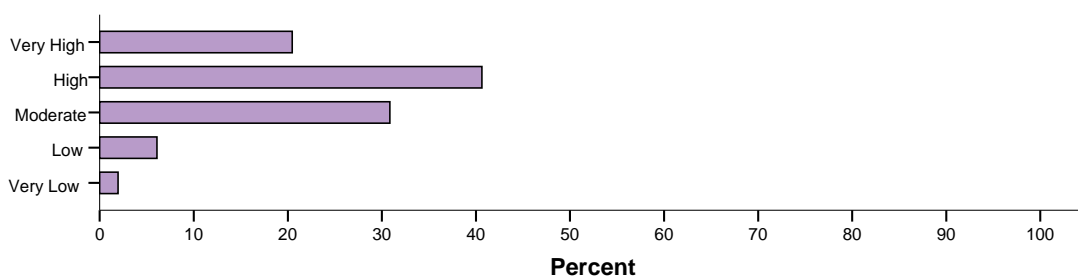
Faculty	Mean	N	Std. Deviation
Business & Enterprise	4.54	3336	1.162
Design	4.51	1910	1.284
Engineering & Industrial Sciences	4.45	1663	1.232
Information & Communication Technologies	4.63	2677	1.123
Life & Social Sciences	4.69	2606	1.183
NICA	4.71	14	1.490
Swinburne at Lilydale	4.54	1340	1.219
TAFE	5.14	175	.835
Total	4.58	13721	1.191

Student Commitment and Subject Difficulty

8. How would you describe your level of commitment to this subject?

		Frequency	Percent	Valid Percent
Valid	Low or Very Low	1110	8.0	8.0
	Moderate	4256	30.9	30.9
	High or Very High	8428	61.1	61.1
	Total	13794	100.0	100.0

How would you describe your level of commitment to this subject?



Faculty	Low or Very Low		Moderate		High or Very High	
	Count	%	Count	%	Count	%
Business & Enterprise	271	8.1%	1143	34.0%	1946	57.9%
Design	164	8.5%	471	24.5%	1290	67.0%
Engineering & Industrial Sciences	146	8.7%	546	32.7%	978	58.6%
Information & Communication Technologies	190	7.1%	846	31.4%	1656	61.5%
Life & Social Sciences	202	7.7%	749	28.7%	1661	63.6%
NICA	2	14.3%	3	21.4%	9	64.3%
Swinburne at Lilydale	132	9.8%	468	34.8%	745	55.4%
TAFE	3	1.7%	30	17.0%	143	81.3%

Descriptive Statistics

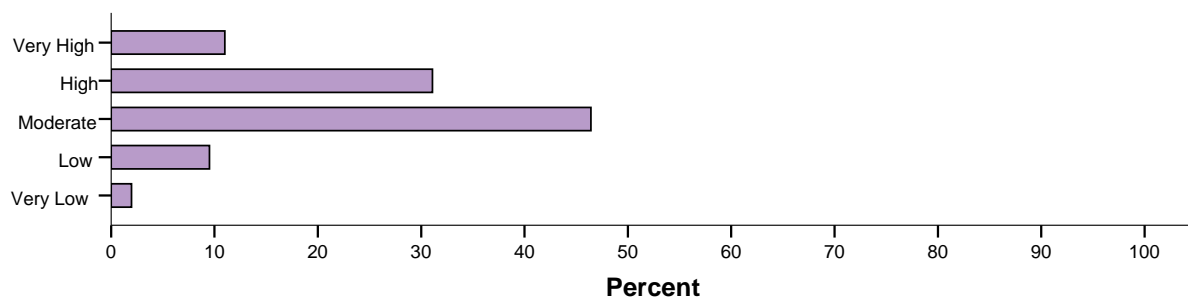
How would you describe your level of commitment to this subject?

Faculty	Mean	N	Std. Deviation
Business & Enterprise	3.66	3360	.911
Design	3.84	1925	.960
Engineering & Industrial Sciences	3.66	1670	.895
Information & Communication Technologies	3.73	2692	.899
Life & Social Sciences	3.76	2612	.928
NICA	3.86	14	1.292
Swinburne at Lilydale	3.58	1345	.940
TAFE	4.19	176	.776
Total	3.72	13794	.923

9. I found the level of difficulty of this subject ...

		Frequency	Percent	Valid Percent
Valid	Low or Very Low	1584	11.5	11.5
	Moderate	6404	46.4	46.4
	High or Very High	5805	42.1	42.1
	Total	13793	100.0	100.0
Missing	System	1	.0	
Total		13794	100.0	

I found the level of difficulty of this subject ...



Faculty	Low or Very Low		Moderate		High or Very High	
	Count	%	Count	%	Count	%
Business & Enterprise	366	10.9%	1564	46.5%	1430	42.6%
Design	244	12.7%	872	45.3%	809	42.0%
Engineering & Industrial Sciences	155	9.3%	685	41.0%	830	49.7%
Information & Communication Technologies	349	13.0%	1251	46.5%	1092	40.6%
Life & Social Sciences	257	9.8%	1255	48.0%	1100	42.1%
NICA			9	64.3%	5	35.7%
Swinburne at Lilydale	182	13.5%	670	49.8%	493	36.7%
TAFE	31	17.7%	98	56.0%	46	26.3%

Descriptive Statistics

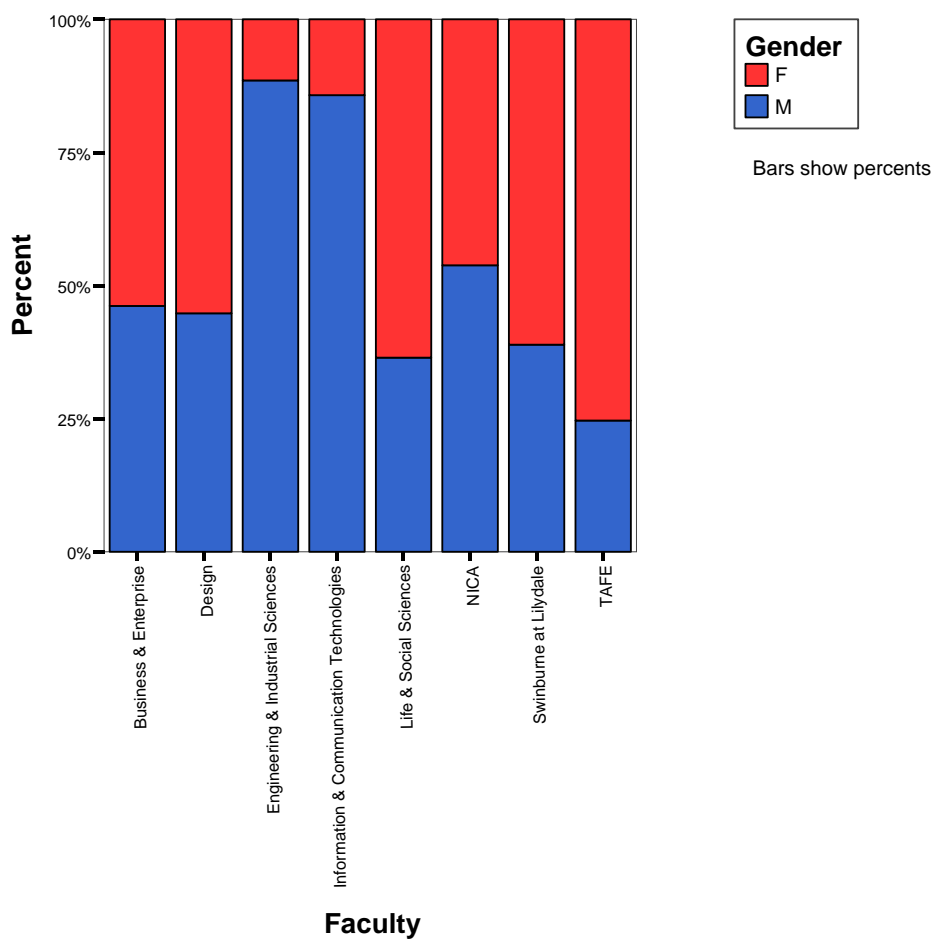
I found the level of difficulty of this subject ...

Faculty	Mean	N	Std. Deviation
Business & Enterprise	3.41	3360	.872
Design	3.38	1925	.887
Engineering & Industrial Sciences	3.54	1670	.888
Information & Communication Technologies	3.35	2692	.891
Life & Social Sciences	3.42	2612	.847
NICA	3.36	14	.497
Swinburne at Lilydale	3.30	1345	.868
TAFE	3.07	175	.781
Total	3.40	13793	.876

Respondent Demographics

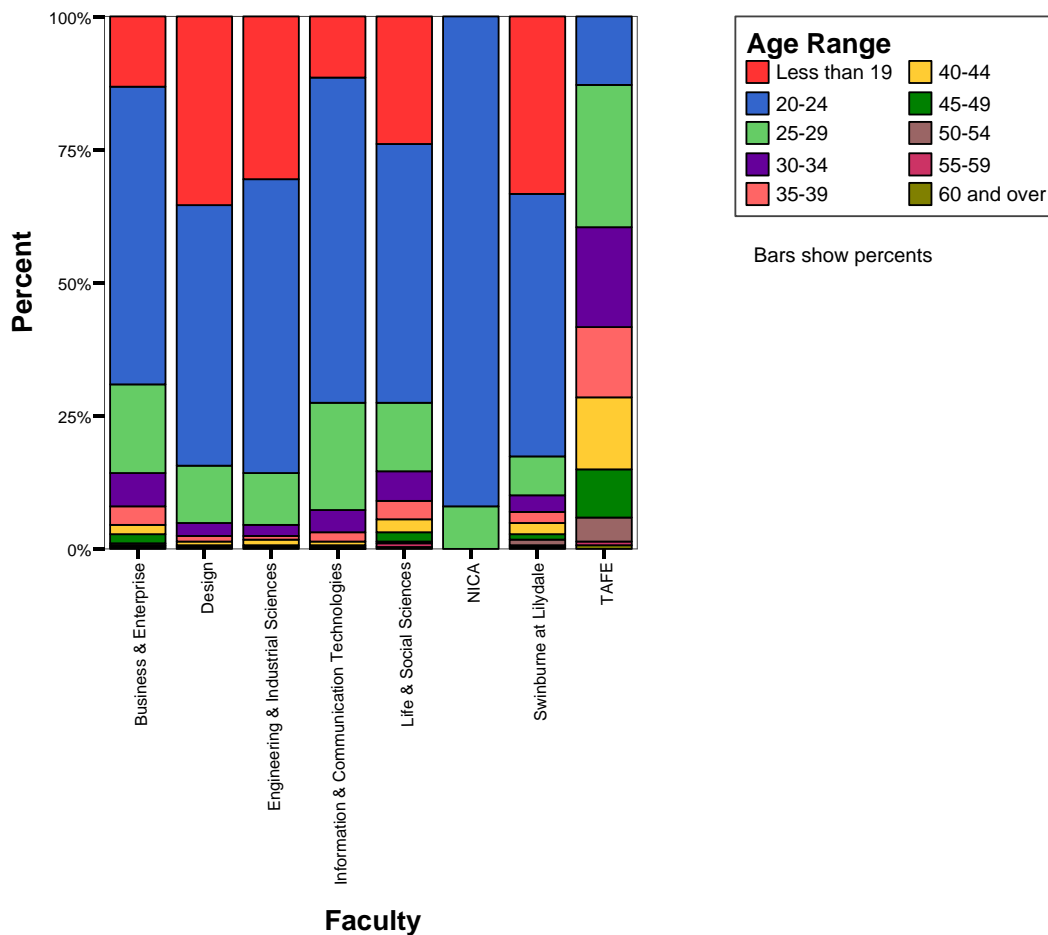
Gender

		Frequency	Percent	Valid Percent
Valid	F	5984	43.4	44.0
	M	7607	55.1	56.0
Total		13591	98.5	100.0
Missing	1	203	1.5	
Total		13794	100.0	



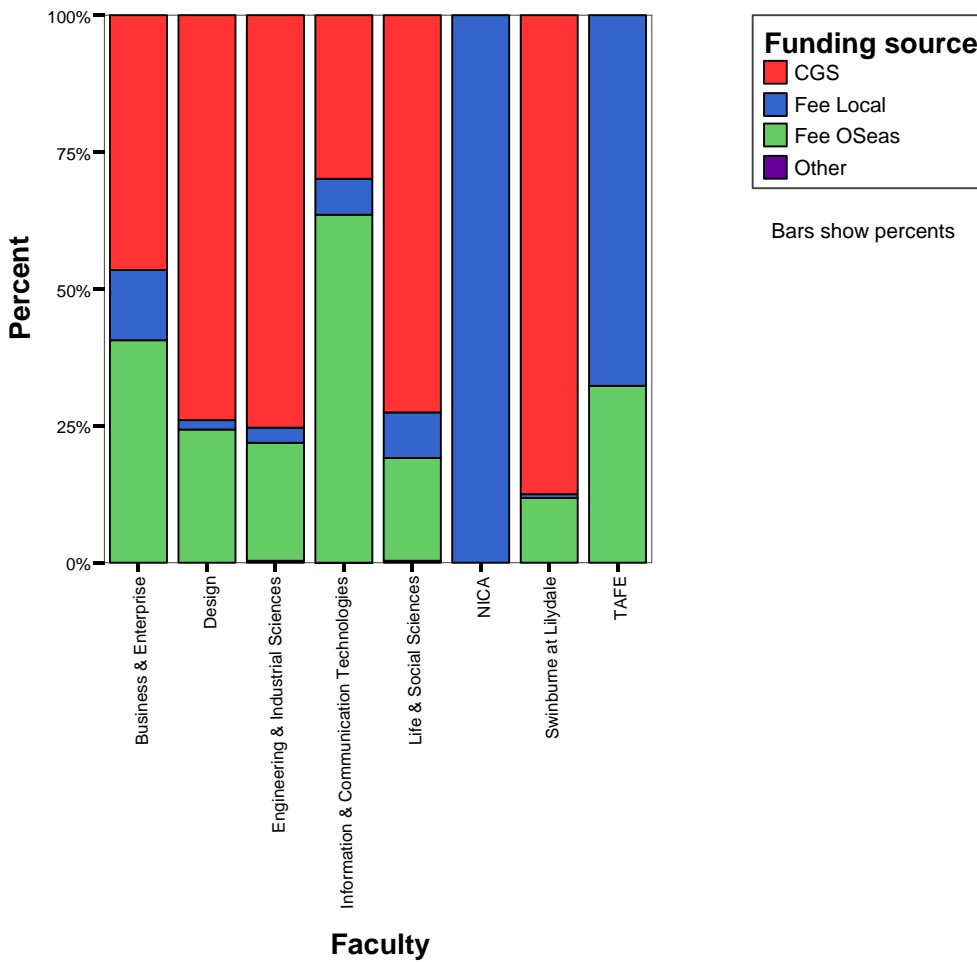
Age Range

		Frequency	Percent	Valid Percent
Valid	Less than 19	2996	21.7	22.0
	20-24	7260	52.6	53.4
	25-29	1928	14.0	14.2
	30-34	611	4.4	4.5
	35-39	331	2.4	2.4
	40-44	223	1.6	1.6
	45-49	154	1.1	1.1
	50-54	59	.4	.4
	55-59	31	.2	.2
	60 and over	12	.1	.1
	Total	13605	98.6	100.0
Missing	System	189	1.4	
Total		13794	100.0	



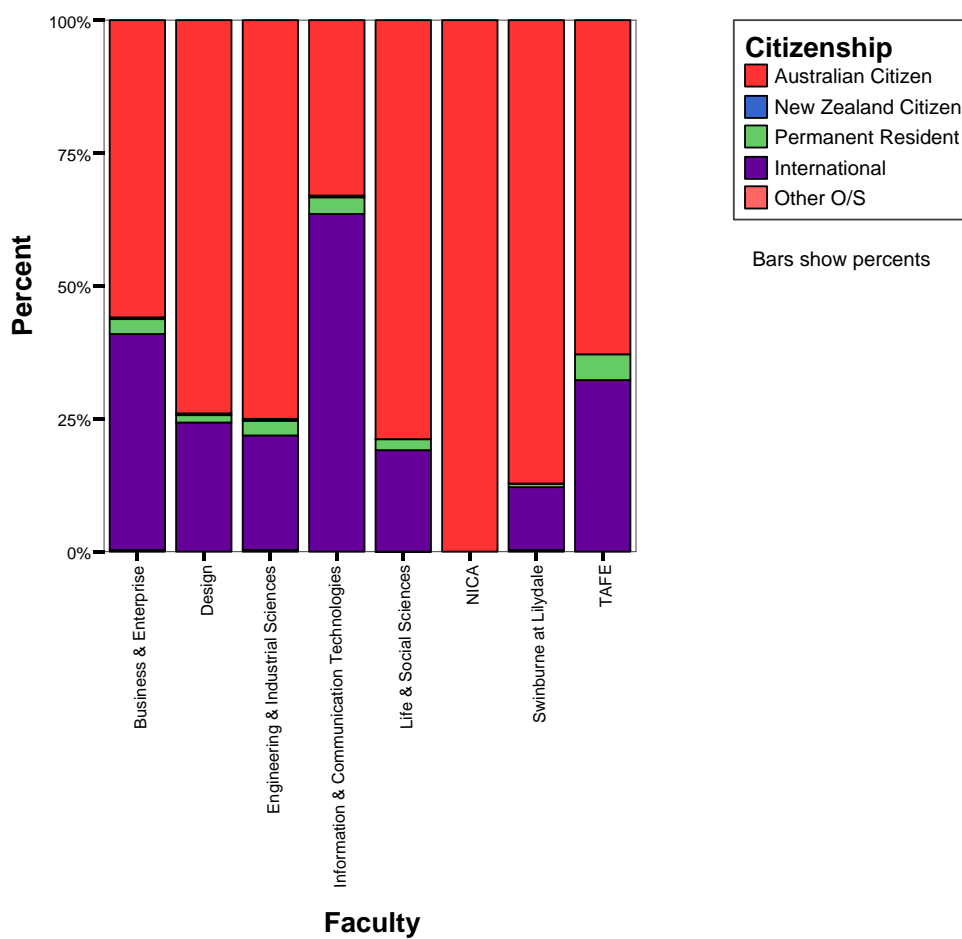
Funding source

		Frequency	Percent	Valid Percent
Valid	CGS	8101	58.7	59.6
	Fee Local	960	7.0	7.1
	Fee OSeas	4526	32.8	33.3
	Other	4	.0	.0
	Total	13591	98.5	100.0
Missing	1	203	1.5	
Total		13794	100.0	



Citizenship

		Frequency	Percent	Valid Percent
Valid	Australian Citizen	8701	63.1	64.0
	New Zealand Citizen	33	.2	.2
	Permanent Resident	317	2.3	2.3
	International	4526	32.8	33.3
	Other O/S	14	.1	.1
	Total	13591	98.5	100.0
Missing	1	203	1.5	
Total		13794	100.0	



Basis of Admission

		Frequency	Percent	Valid Percent
Valid	HEd Comp/Incomp	1533	11.1	11.3
	Mature Age	3	.0	.0
	not commencing	9618	69.7	70.8
	other	139	1.0	1.0
	Prof. qual.	15	.1	.1
	Sec.edec	1704	12.4	12.5
	TAFE	579	4.2	4.3
	Total	13591	98.5	100.0
Missing	1	203	1.5	
Total		13794	100.0	

