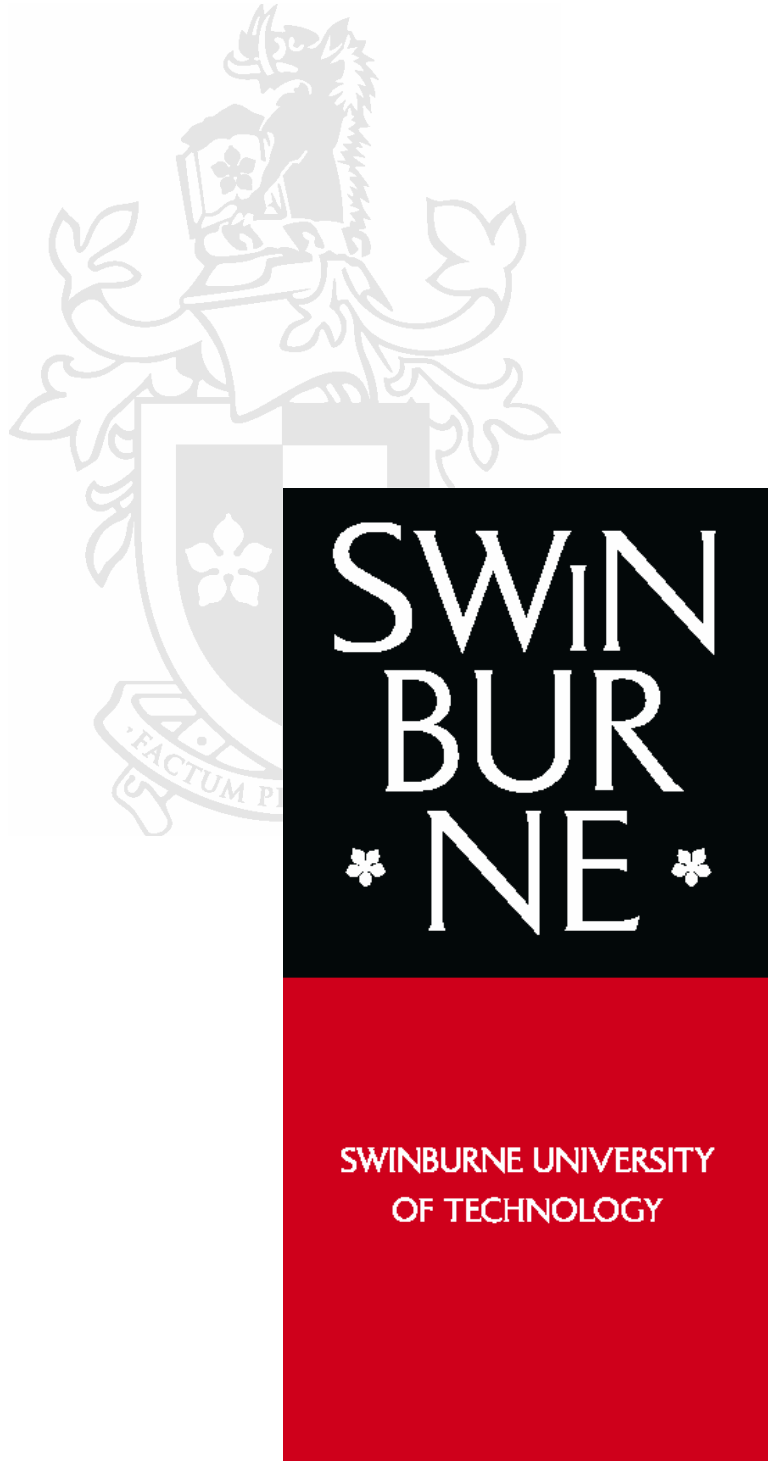


Evaluation Services
Strategic Planning & Quality Unit

Student Feedback on Subjects Survey

Higher Education

January 2007



Contents

Higher Education Report	5
Introduction.....	5
Response Rates (Division)	6
1. The subject is well organised.....	7
2. Information and concepts are clearly explained.....	8
3. The subject stimulates my curiosity to learn more about this field.....	9
4. I am given opportunities to apply my learning.....	10
5. The assessment requirements are clear.....	11
6. The assessment tasks align well with the subject content.....	12
7. The assessment tasks assist my learning	13
10. I am satisfied with the teaching spaces, facilities and equipment.....	14
11. The learning materials and resources for this subject meet my learning needs	15
12. The way this subject is delivered suits my needs	16
13. I have received helpful feedback	17
14. Overall, I am satisfied with the quality of teaching in this subject.	18
15. Overall, I am satisfied with this subject (other than teaching).....	19
8. How would you describe your level of commitment to this subject?	20
9. I found the level of difficulty of this subject.....	21
Mean Scores - Division.....	22
Respondent Demographics	23
Respondent course level	23
Basis of Admission.....	23
Gender.....	24
ENTER Score (Commencing respondents only)	24
Funding Type.....	25
Aggregate Age.....	26
Citizenship Status	27

Higher Education Report

Introduction

This report summarises overall performance across the Division against all items in the TP4&5, 2006 Student Feedback on Subjects Survey. The aim is to provide a snapshot of the Division performance, and also to identify subjects for which improvement activities should be undertaken. A report has also been completed for each faculty, and new summary frequency reports and full reports including student comments and some demographics have been distributed to subject convenors.

A version of the updated Student Feedback on Subjects Survey, which was previously piloted in the TP2 & 3, was distributed to subject convenors in each faculty and administered in October 2006. Most surveys were distributed and returned in the last two weeks of classes, with a nominated student responsible for the return of completed surveys to a central location.

At this stage, the policy relating to the benchmark below which faculties are required to develop formal improvement plans overseen by the APQC (Academic Programs Quality Committee) is under review. Information relating to this will be sent to faculties as soon as it becomes available.

Please note that work is also continuing on the trial and development of a Student Feedback on Teaching instrument.

An Excel spreadsheet including mean results for all Faculty subjects for each survey item, is being distributed with this report and copies of all subject reports will be made available to the Divisional Office on CD.

Please direct any comments or suggestions on the content of this report to Lisa Bolton on 9214 5331 or by e-mail (lbolton@swin.edu.au).

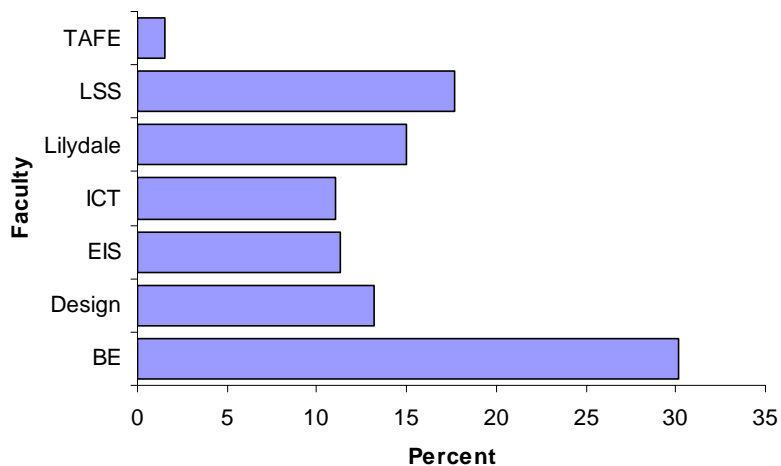
Response Rates (Division)

Responses by faculty

(For subjects where surveys were returned)

		Responses	Enrolled	% Response Rate	% of Division Responses
Valid	Business & Enterprise	10462	5814	55.57	30.17
	Design	4710	2543	53.99	13.20
	Engineering & Industrial Sciences	4744	2187	46.10	11.35
	Information & Communication Technologies*	5027	2127	42.31	11.04
	Lilydale	5667	2894	51.07	15.02
	Life & Social Sciences	6284	3401	54.12	17.65
	TAFE	560.00	302.00	53.93	1.57
	Total	37446	19268	51.44	100.0

% Division Response



Faculty Return Rates (All Planned Subjects)

	Planned Subjects	Returned Subjects	% Subjects returned
Business & Enterprise	166	140	84.3
Design	106	88	83.0
Engineering & Industrial Sciences	106	71	67.0
Information & Communication Technologies*	100	89	89.0
Lilydale	168	137	81.5
Life & Social Sciences	87	49	56.3
TAFE	31	15	48.4
Total	764	589	77.1

*Not including Astrophysics (online)

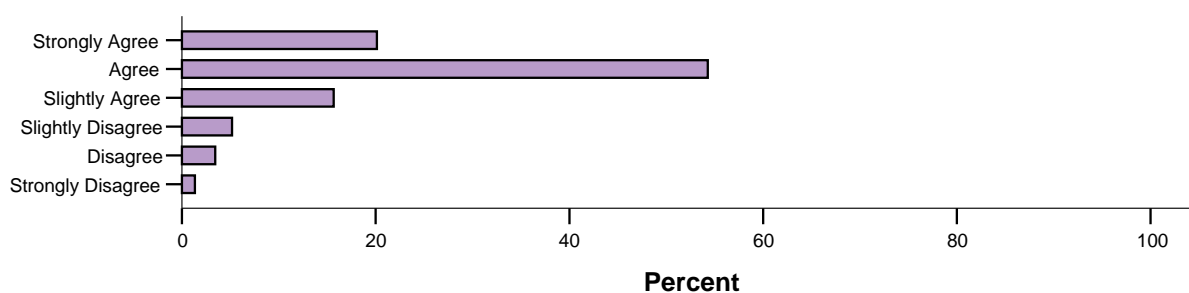
** Some surveys for were received very late or on previously issued forms and are not included in the above figures.

Subject Delivery and Assessment

1. The subject is well organised

		Frequency	Percent	Valid Percent
Valid	Broadly Agree	17294	89.8	90.1
	Broadly Disagree	1908	9.9	9.9
	Total	19202	99.7	100.0
Missing	0	16	.1	
	System	50	.3	
	Total	66	.3	
Total		19268	100.0	

1. The subject is well organised.



Subject Outcomes

The table below includes the frequency and percentage of broadly agree and disagree responses for the item, and table beneath also details the mean of the total responses for each subject, the number of responses (N), the standard deviation (indicating the spread of responses – the higher the standard deviation the wider the spread of responses).

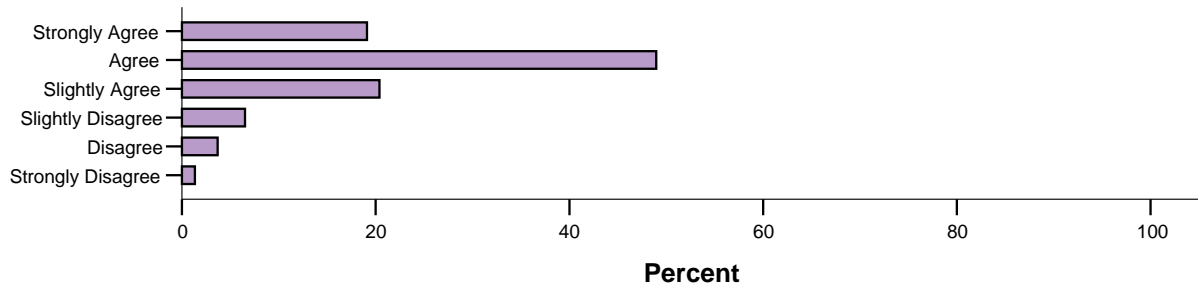
		Broadly Agree		Broadly Disagree	
		Count	%	Count	%
Faculty	Business & Enterprise	5267	91.0%	521	9.0%
	Design	2209	87.2%	324	12.8%
	Engineering & Industrial Sciences	1904	87.5%	272	12.5%
	Information & Communication Technologies	1883	88.6%	242	11.4%
	Life & Social Sciences	2596	90.1%	286	9.9%
	Lilydale	3153	92.7%	247	7.3%
	TAFE	282	94.6%	16	5.4%

Faculty	Mean	N	Std. Deviation
Business & Enterprise	4.79	5788	.994
Design	4.65	2533	1.085
Engineering & Industrial Sciences	4.70	2176	1.073
Information & Communication Technologies	4.71	2125	1.033
Life & Social Sciences	4.76	2882	.994
Lilydale	4.96	3400	.976
TAFE	5.14	298	.890
Total	4.78	19202	1.021

2. Information and concepts are clearly explained

		Frequency	Percent	Valid Percent
Valid	Broadly Agree	16958	88.0	88.5
	Broadly Disagree	2213	11.5	11.5
	Total	19171	99.5	100.0
Missing	0	24	.1	
	System	73	.4	
	Total	97	.5	
Total		19268	100.0	

2. Information and concepts are clearly explained.



Subject Outcomes

The table below includes the frequency and percentage of broadly agree and disagree responses for the item, and table beneath also details the mean of the total responses for each subject, the number of responses (N), the standard deviation (indicating the spread of responses – the higher the standard deviation the wider the spread of responses).

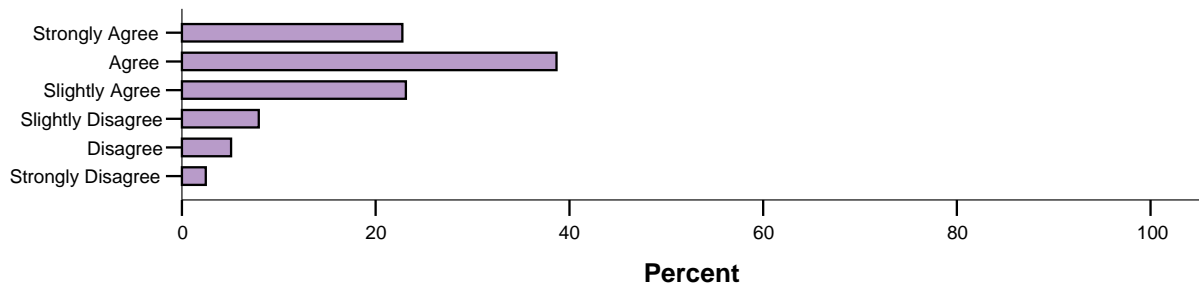
		Broadly Agree		Broadly Disagree	
		Count	%	Count	%
Faculty	Business & Enterprise	5130	88.6%	660	11.4%
	Design	2206	87.2%	323	12.8%
	Engineering & Industrial Sciences	1866	85.9%	307	14.1%
	Information & Communication Technologies	1861	88.1%	251	11.9%
	Life & Social Sciences	2497	86.8%	379	13.2%
	Lilydale	3113	91.8%	278	8.2%
	TAFE	285	95.0%	15	5.0%

Faculty	Mean	N	Std. Deviation
Business & Enterprise	4.70	5790	1.036
Design	4.65	2529	1.066
Engineering & Industrial Sciences	4.55	2173	1.086
Information & Communication Technologies	4.65	2112	1.054
Life & Social Sciences	4.61	2876	1.090
Lilydale	4.88	3391	.991
TAFE	5.05	300	.937
Total	4.69	19171	1.052

3. The subject stimulates my curiosity to learn more about this field

		Frequency	Percent	Valid Percent
Valid	Broadly Agree	16181	84.0	84.5
	Broadly Disagree	2960	15.4	15.5
	Total	19141	99.3	100.0
Missing	0	49	.3	
	System	78	.4	
	Total	127	.7	
Total		19268	100.0	

3. This subject stimulates my curiosity to learn more about this field.



Subject Outcomes

The table below includes the frequency and percentage of broadly agree and disagree responses for the item, and table beneath also details the mean of the total responses for each subject, the number of responses (N), the standard deviation (indicating the spread of responses – the higher the standard deviation the wider the spread of responses).

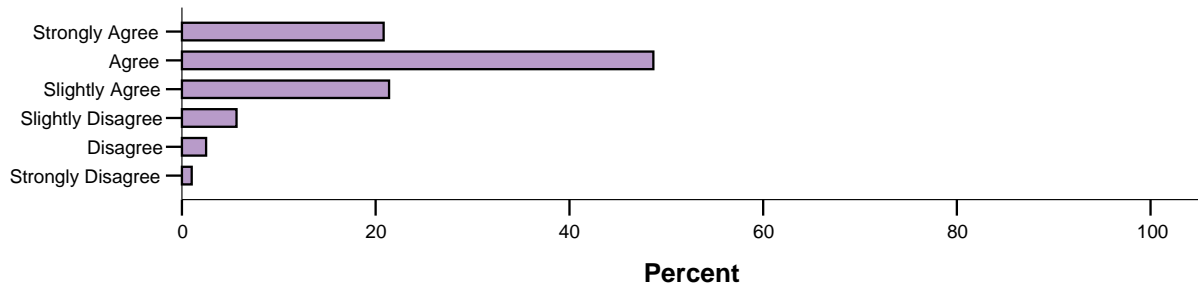
		Broadly Agree		Broadly Disagree	
		Count	%	Count	%
Faculty	Business & Enterprise	4942	85.6%	829	14.4%
	Design	2231	88.1%	300	11.9%
	Engineering & Industrial Sciences	1747	80.8%	415	19.2%
	Information & Communication Technologies	1765	83.4%	352	16.6%
	Life & Social Sciences	2315	80.4%	565	19.6%
	Lilydale	2905	86.0%	474	14.0%
	TAFE	276	91.7%	25	8.3%

Faculty	Mean	N	Std. Deviation
Business & Enterprise	4.61	5771	1.166
Design	4.72	2531	1.106
Engineering & Industrial Sciences	4.38	2162	1.230
Information & Communication Technologies	4.54	2117	1.258
Life & Social Sciences	4.39	2880	1.252
Lilydale	4.73	3379	1.226
TAFE	5.00	301	1.049
Total	4.59	19141	1.207

4. I am given opportunities to apply my learning

		Frequency	Percent	Valid Percent
Valid	Broadly Agree	17359	90.1	90.9
	Broadly Disagree	1745	9.1	9.1
	Total	19104	99.1	100.0
Missing	0	53	.3	
	System	111	.6	
	Total	164	.9	
Total		19268	100.0	

4. I am given opportunities to apply my learning.



Subject Outcomes

The table below includes the frequency and percentage of broadly agree and disagree responses for the item, and table beneath also details the mean of the total responses for each subject, the number of responses (N), the standard deviation (indicating the spread of responses – the higher the standard deviation the wider the spread of responses).

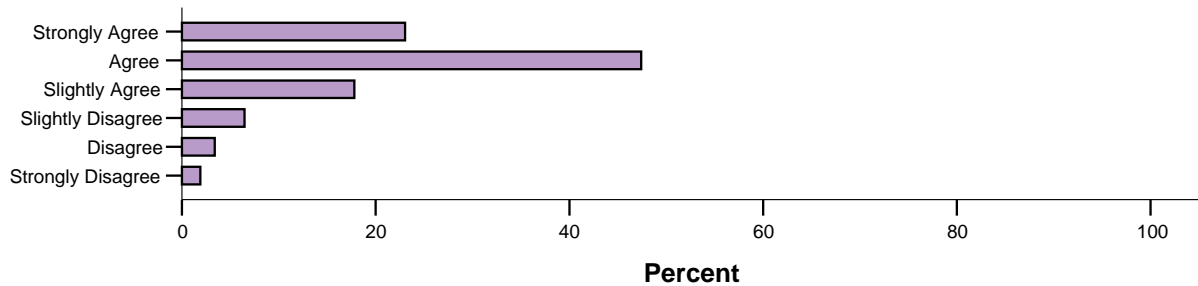
		Broadly Agree		Broadly Disagree	
		Count	%	Count	%
Faculty	Business & Enterprise	5230	90.8%	531	9.2%
	Design	2344	93.0%	176	7.0%
	Engineering & Industrial Sciences	1880	87.2%	276	12.8%
	Information & Communication Technologies	1926	91.5%	180	8.5%
	Life & Social Sciences	2616	90.8%	264	9.2%
	Lilydale	3088	91.3%	293	8.7%
	TAFE	275	91.7%	25	8.3%

Faculty	Mean	N	Std. Deviation
Business & Enterprise	4.75	5761	.972
Design	4.88	2520	.952
Engineering & Industrial Sciences	4.61	2156	1.059
Information & Communication Technologies	4.77	2106	.989
Life & Social Sciences	4.71	2880	.954
Lilydale	4.84	3381	1.013
TAFE	4.98	300	.959
Total	4.77	19104	.989

5. The assessment requirements are clear

		Frequency	Percent	Valid Percent
Valid	Broadly Agree	16898	87.7	88.2
	Broadly Disagree	2251	11.7	11.8
	Total	19149	99.4	100.0
Missing	0	42	.2	
	System	77	.4	
	Total	119	.6	
Total		19268	100.0	

5. The assessment requirements are clear.



Subject Outcomes

The table below includes the frequency and percentage of broadly agree and disagree responses for the item, and table beneath also details the mean of the total responses for each subject, the number of responses (N), the standard deviation (indicating the spread of responses – the higher the standard deviation the wider the spread of responses).

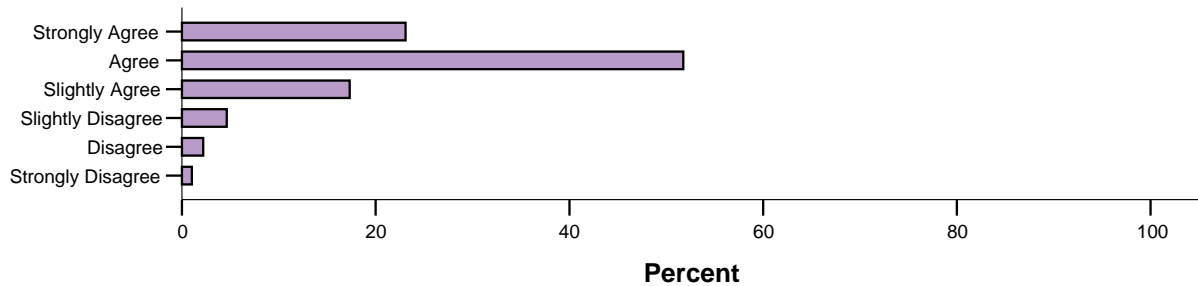
		Broadly Agree		Broadly Disagree	
		Count	%	Count	%
Faculty	Business & Enterprise	5077	87.9%	697	12.1%
	Design	2230	88.2%	299	11.8%
	Engineering & Industrial Sciences	1929	89.1%	237	10.9%
	Information & Communication Technologies	1822	86.2%	292	13.8%
	Life & Social Sciences	2489	86.4%	391	13.6%
	Lilydale	3073	90.8%	312	9.2%
	TAFE	278	92.4%	23	7.6%

Faculty	Mean	N	Std. Deviation
Business & Enterprise	4.73	5774	1.093
Design	4.70	2529	1.066
Engineering & Industrial Sciences	4.77	2166	1.099
Information & Communication Technologies	4.62	2114	1.137
Life & Social Sciences	4.66	2880	1.153
Lilydale	4.92	3385	1.055
TAFE	4.90	301	1.044
Total	4.75	19149	1.101

6. The assessment tasks align well with the subject content

		Frequency	Percent	Valid Percent
Valid	Broadly Agree	17602	91.4	92.2
	Broadly Disagree	1497	7.8	7.8
	Total	19099	99.1	100.0
Missing	0	83	.4	
	System	86	.4	
	Total	169	.9	
Total		19268	100.0	

6. The assessment tasks align well with the subject content.



Subject Outcomes

The table below includes the frequency and percentage of broadly agree and disagree responses for the item, and table beneath also details the mean of the total responses for each subject, the number of responses (N), the standard deviation (indicating the spread of responses – the higher the standard deviation the wider the spread of responses).

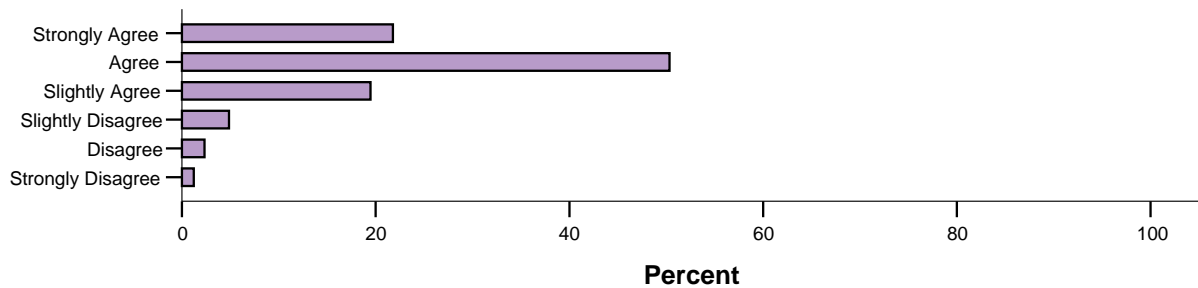
		Broadly Agree		Broadly Disagree	
		Count	%	Count	%
Faculty	Business & Enterprise	5311	92.2%	447	7.8%
	Design	2321	92.4%	191	7.6%
	Engineering & Industrial Sciences	1984	91.9%	176	8.1%
	Information & Communication Technologies	1912	90.6%	199	9.4%
	Life & Social Sciences	2625	91.1%	256	8.9%
	Lilydale	3162	93.7%	213	6.3%
	TAFE	287	95.0%	15	5.0%

Faculty	Mean	N	Std. Deviation
Business & Enterprise	4.86	5758	.943
Design	4.83	2512	.944
Engineering & Industrial Sciences	4.83	2160	.966
Information & Communication Technologies	4.79	2111	1.013
Life & Social Sciences	4.78	2881	.982
Lilydale	4.98	3375	.967
TAFE	5.05	302	.830
Total	4.86	19099	.964

7. The assessment tasks assist my learning

		Frequency	Percent	Valid Percent
Valid	Broadly Agree	17495	90.8	91.6
	Broadly Disagree	1605	8.3	8.4
	Total	19100	99.1	100.0
Missing	0	78	.4	
	System	90	.5	
	Total	168	.9	
Total		19268	100.0	

7. The assessment tasks assist my learning.



Subject Outcomes

The table below includes the frequency and percentage of broadly agree and disagree responses for the item, and table beneath also details the mean of the total responses for each subject, the number of responses (N), the standard deviation (indicating the spread of responses – the higher the standard deviation the wider the spread of responses).

		Broadly Agree		Broadly Disagree	
		Count	%	Count	%
Faculty	Business & Enterprise	5293	91.9%	469	8.1%
	Design	2303	91.4%	218	8.6%
	Engineering & Industrial Sciences	1968	91.0%	194	9.0%
	Information & Communication Technologies	1926	91.2%	186	8.8%
	Life & Social Sciences	2577	89.7%	296	10.3%
	Lilydale	3143	93.3%	226	6.7%
	TAFE	285	94.7%	16	5.3%

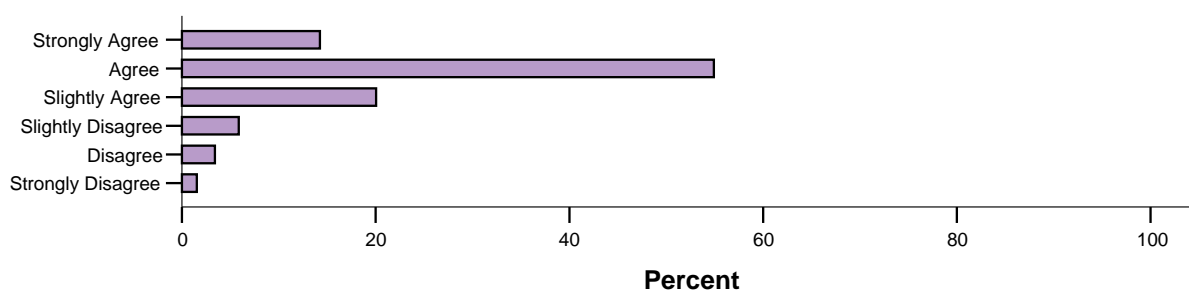
Faculty	Mean	N	Std. Deviation
Business & Enterprise	4.81	5762	.954
Design	4.79	2521	.985
Engineering & Industrial Sciences	4.76	2162	1.008
Information & Communication Technologies	4.80	2112	1.011
Life & Social Sciences	4.69	2873	1.029
Lilydale	4.93	3369	.967
TAFE	5.08	301	.915
Total	4.81	19100	.987

Facilities, Resources and Materials

10. I am satisfied with the teaching spaces, facilities and equipment

		Frequency	Percent	Valid Percent
Valid	Broadly Agree	17042	88.4	89.2
	Broadly Disagree	2063	10.7	10.8
	Total	19105	99.2	100.0
Missing	Not Applicable	41	.2	
	System	122	.6	
	Total	163	.8	
Total		19268	100.0	

10. I am satisfied with the teaching spaces, facilities and equipment.



Subject Outcomes

The table below includes the frequency and percentage of broadly agree and disagree responses for the item, and table beneath also details the mean of the total responses for each subject, the number of responses (N), the standard deviation (indicating the spread of responses – the higher the standard deviation the wider the spread of responses).

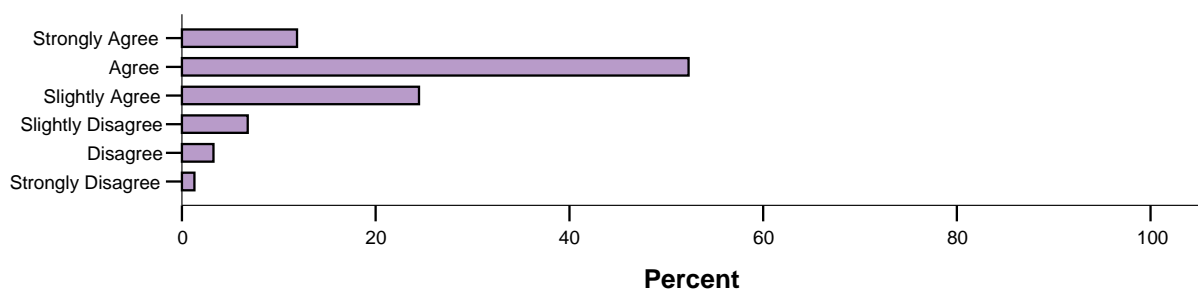
		Broadly Agree		Broadly Disagree	
		Count	%	Count	%
Faculty	Business & Enterprise	5255	91.0%	518	9.0%
	Design	2025	80.6%	486	19.4%
	Engineering & Industrial Sciences	1919	88.7%	244	11.3%
	Information & Communication Technologies	1870	88.4%	245	11.6%
	Life & Social Sciences	2658	92.4%	218	7.6%
	Lilydale	3076	91.4%	290	8.6%
	TAFE	239	79.4%	62	20.6%

Faculty	Mean	N	Std. Deviation
Business & Enterprise	4.71	5773	.959
Design	4.37	2511	1.166
Engineering & Industrial Sciences	4.60	2163	1.026
Information & Communication Technologies	4.63	2115	1.006
Life & Social Sciences	4.75	2876	.913
Lilydale	4.79	3366	.946
TAFE	4.36	301	1.287
Total	4.66	19105	1.007

11. The learning materials and resources for this subject meet my learning needs

		Frequency	Percent	Valid Percent
Valid	Broadly Agree	16638	86.4	88.7
	Broadly Disagree	2127	11.0	11.3
	Total	18765	97.4	100.0
Missing	0	71	.4	
	System	432	2.2	
	Total	503	2.6	
Total		19268	100.0	

11. The learning materials and resources for this subject meet my learning needs.



Subject Outcomes

The table below includes the frequency and percentage of broadly agree and disagree responses for the item, and table beneath also details the mean of the total responses for each subject, the number of responses (N), the standard deviation (indicating the spread of responses – the higher the standard deviation the wider the spread of responses).

		Broadly Agree		Broadly Disagree	
		Count	%	Count	%
Faculty	Business & Enterprise	5120	90.1%	562	9.9%
	Design	2071	84.9%	367	15.1%
	Engineering & Industrial Sciences	1831	85.8%	302	14.2%
	Information & Communication Technologies	1827	87.3%	266	12.7%
	Life & Social Sciences	2527	89.3%	302	10.7%
	Lilydale	2984	90.5%	312	9.5%
	TAFE	278	94.6%	16	5.4%

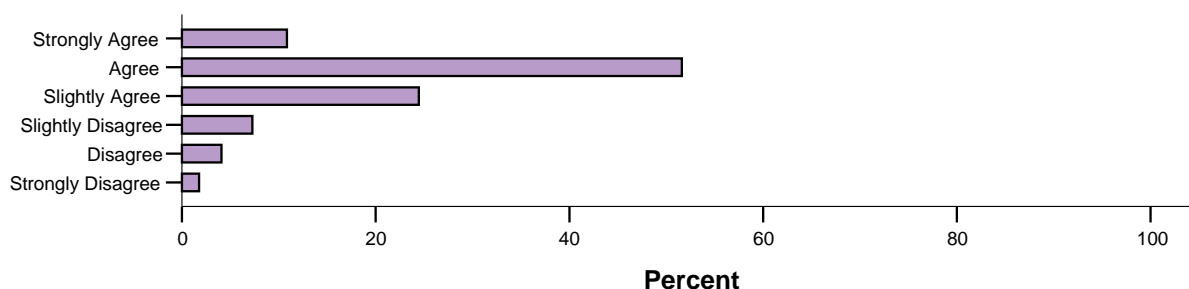
Faculty	Mean	N	Std. Deviation
Business & Enterprise	4.63	5682	.945
Design	4.44	2438	1.021
Engineering & Industrial Sciences	4.46	2133	1.045
Information & Communication Technologies	4.53	2093	1.015
Life & Social Sciences	4.60	2829	.946
Lilydale	4.72	3296	.971
TAFE	4.88	294	.801
Total	4.59	18765	.982

Delivery Style and Feedback

12. The way this subject is delivered suits my needs

		Frequency	Percent	Valid Percent
Valid	Broadly Agree	16564	86.0	86.9
	Broadly Disagree	2499	13.0	13.1
	Total	19063	98.9	100.0
Missing	0	44	.2	
	System	161	.8	
	Total	205	1.1	
Total		19268	100.0	

12. The way that this subject is delivered suits my needs.



Subject Outcomes

The table below includes the frequency and percentage of broadly agree and disagree responses for the item, and table beneath also details the mean of the total responses for each subject, the number of responses (N), the standard deviation (indicating the spread of responses – the higher the standard deviation the wider the spread of responses).

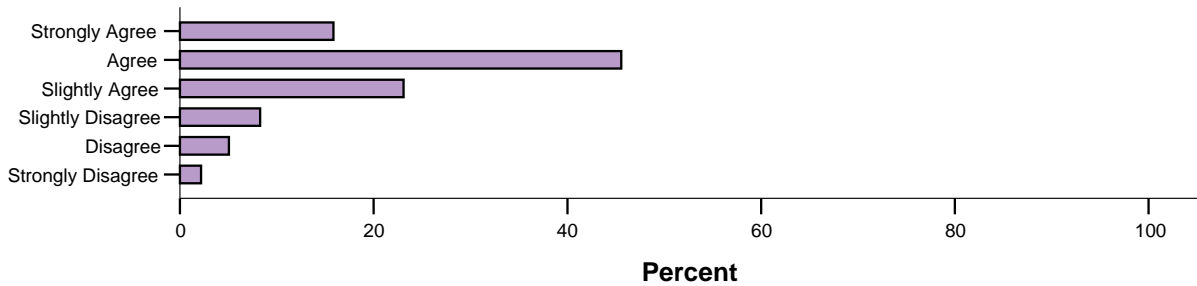
		Broadly Agree		Broadly Disagree	
		Count	%	Count	%
Faculty	Business & Enterprise	5012	87.2%	737	12.8%
	Design	2184	87.3%	318	12.7%
	Engineering & Industrial Sciences	1806	83.4%	359	16.6%
	Information & Communication Technologies	1796	85.3%	309	14.7%
	Life & Social Sciences	2482	86.5%	389	13.5%
	Lilydale	3004	89.1%	366	10.9%
	TAFE	280	93.0%	21	7.0%

Faculty	Mean	N	Std. Deviation
Business & Enterprise	4.53	5749	1.023
Design	4.50	2502	1.015
Engineering & Industrial Sciences	4.36	2165	1.080
Information & Communication Technologies	4.45	2105	1.057
Life & Social Sciences	4.51	2871	1.039
Lilydale	4.67	3370	.996
TAFE	4.89	301	.931
Total	4.53	19063	1.033

13. I have received helpful feedback

		Frequency	Percent	Valid Percent
Valid	Broadly Agree	15781	81.9	84.5
	Broadly Disagree	2896	15.0	15.5
	Total	18677	96.9	100.0
Missing	0	388	2.0	
	System	203	1.1	
	Total	591	3.1	
Total		19268	100.0	

13. I have received helpful feedback.



Subject Outcomes

The table below includes the frequency and percentage of broadly agree and disagree responses for the item, and table beneath also details the mean of the total responses for each subject, the number of responses (N), the standard deviation (indicating the spread of responses – the higher the standard deviation the wider the spread of responses).

		Broadly Agree		Broadly Disagree	
		Count	%	Count	%
Faculty	Business & Enterprise	4942	85.6%	829	14.4%
	Design	2231	88.1%	300	11.9%
	Engineering & Industrial Sciences	1747	80.8%	415	19.2%
	Information & Communication Technologies	1765	83.4%	352	16.6%
	Life & Social Sciences	2315	80.4%	565	19.6%
	Lilydale	2905	86.0%	474	14.0%
	TAFE	276	91.7%	25	8.3%

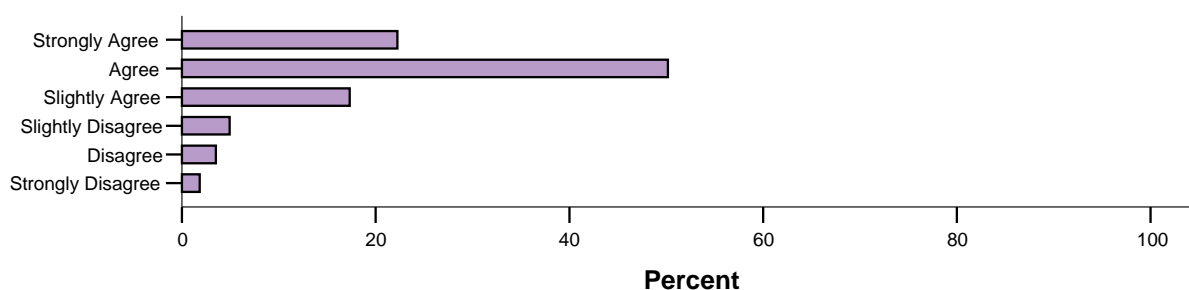
Faculty	Mean	N	Std. Deviation
Business & Enterprise	4.51	5662	1.104
Design	4.70	2501	1.131
Engineering & Industrial Sciences	4.26	2113	1.190
Information & Communication Technologies	4.45	2045	1.125
Life & Social Sciences	4.49	2831	1.164
Lilydale	4.64	3232	1.124
TAFE	4.87	293	1.004
Total	4.52	18677	1.139

Overall Teaching Satisfaction

14. Overall, I am satisfied with the quality of teaching in this subject.

		Frequency	Percent	Valid Percent
Valid	Broadly Agree	17098	88.7	89.7
	Broadly Disagree	1956	10.2	10.3
	Total	19054	98.9	100.0
Missing	0	29	.2	
	System	185	1.0	
	Total	214	1.1	
Total		19268	100.0	

14. Overall, I am satisfied with the quality of teaching in this subject.



Subject Outcomes

The table below includes the frequency and percentage of broadly agree and disagree responses for the item, and table beneath also details the mean of the total responses for each subject, the number of responses (N), the standard deviation (indicating the spread of responses – the higher the standard deviation the wider the spread of responses).

		Broadly Agree		Broadly Disagree	
		Count	%	Count	%
Faculty	Business & Enterprise	5136	89.3%	616	10.7%
	Design	2250	89.8%	255	10.2%
	Engineering & Industrial Sciences	1868	86.6%	289	13.4%
	Information & Communication Technologies	1863	88.8%	235	11.2%
	Life & Social Sciences	2562	89.2%	309	10.8%
	Lilydale	3136	93.0%	235	7.0%
	TAFE	283	94.3%	17	5.7%

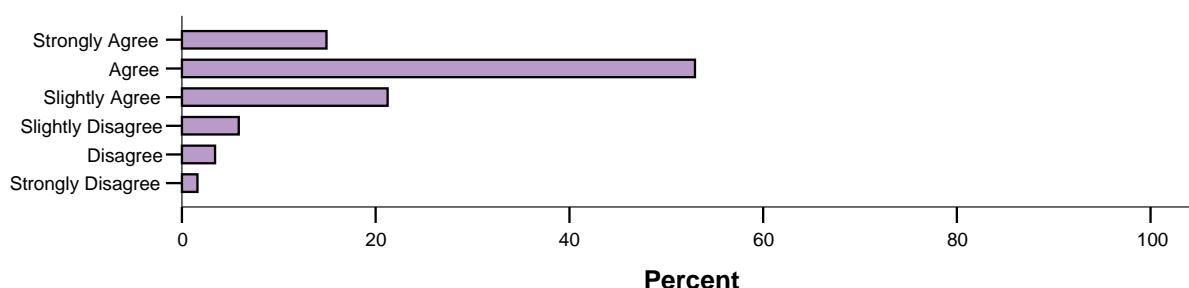
Faculty	Mean	N	Std. Deviation
Business & Enterprise	4.75	5752	1.075
Design	4.76	2505	1.075
Engineering & Industrial Sciences	4.59	2157	1.101
Information & Communication Technologies	4.68	2098	1.078
Life & Social Sciences	4.76	2871	1.103
Lilydale	4.98	3371	.986
TAFE	5.08	300	.984
Total	4.77	19054	1.072

Overall Subject Satisfaction

15. Overall, I am satisfied with this subject (other than teaching)

		Frequency	Percent	Valid Percent
Valid	Broadly Agree	16903	87.7	89.1
	Broadly Disagree	2064	10.7	10.9
	Total	18967	98.4	100.0
Missing	0	56	.3	
	System	245	1.3	
	Total	301	1.6	
Total		19268	100.0	

15. Overall I am satisfied with this subject (other than teaching).



Subject Outcomes

The table below includes the frequency and percentage of broadly agree and disagree responses for the item, and table beneath also details the mean of the total responses for each subject, the number of responses (N), the standard deviation (indicating the spread of responses – the higher the standard deviation the wider the spread of responses).

		Broadly Agree		Broadly Disagree	
		Count	%	Count	%
Faculty	Business & Enterprise	5110	89.3%	612	10.7%
	Design	2228	89.4%	264	10.6%
	Engineering & Industrial Sciences	1884	87.5%	268	12.5%
	Information & Communication Technologies	1846	88.2%	246	11.8%
	Life & Social Sciences	2503	87.7%	351	12.3%
	Lilydale	3052	90.9%	304	9.1%
	TAFE	280	93.6%	19	6.4%

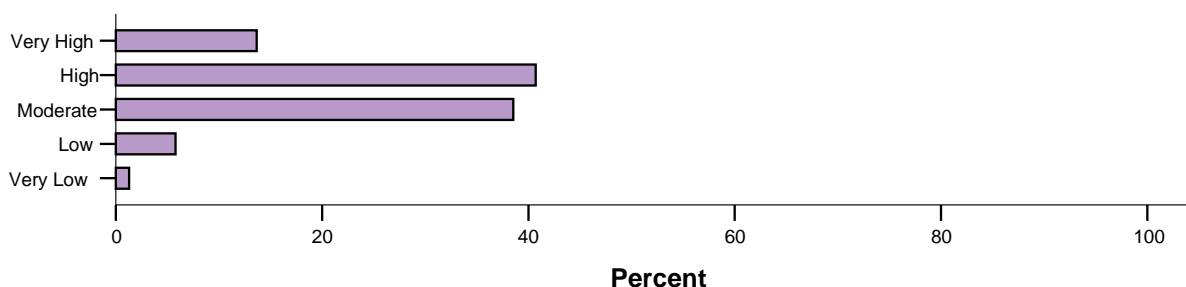
Faculty	Mean	N	Std. Deviation
Business & Enterprise	4.65	5722	1.007
Design	4.65	2492	1.005
Engineering & Industrial Sciences	4.53	2152	1.038
Information & Communication Technologies	4.57	2092	1.040
Life & Social Sciences	4.60	2854	1.049
Lilydale	4.81	3356	.988
TAFE	4.92	299	.903
Total	4.65	18967	1.020

Student Commitment and Subject Difficulty

8. How would you describe your level of commitment to this subject?

		Frequency	Percent	Valid Percent
Valid	Very Low or Low	1360	7.1	7.1
	High or Very High	17807	92.4	92.9
	Total	19167	99.5	100.0
Missing	System	101	.5	
Total		19268	100.0	

8. How would you describe your level of commitment to this subject?



Subject Outcomes

The table below includes the frequency and percentage of broadly agree and disagree responses for the item, and table beneath also details the mean of the total responses for each subject, the number of responses (N), the standard deviation (indicating the spread of responses – the higher the standard deviation the wider the spread of responses).

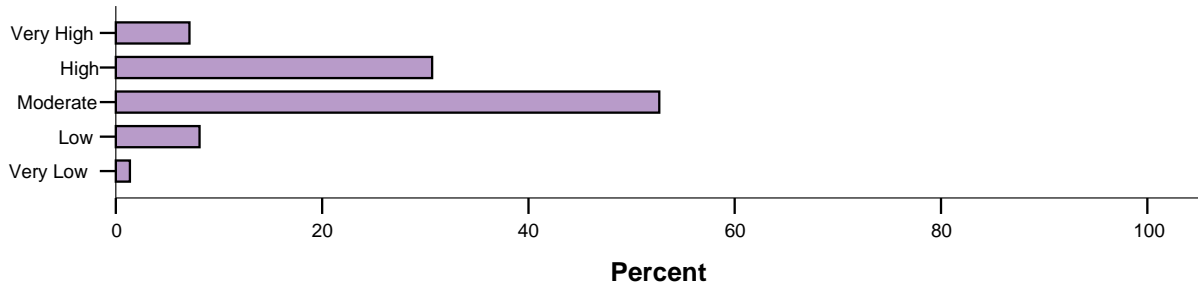
		Very Low or Low		Moderate		Very High or High	
		Count	%	Count	%	Count	%
Faculty	Business & Enterprise	371	6.4%	2382	41.1%	3037	52.5%
	Design	125	5.0%	782	31.0%	1612	64.0%
	Engineering & Industrial Sciences	195	9.0%	919	42.2%	1064	48.9%
	Information & Communication Technologies	175	8.3%	807	38.1%	1136	53.6%
	Life & Social Sciences	254	8.8%	1272	44.2%	1355	47.0%
	Lilydale	228	6.7%	1153	34.1%	1999	59.1%
	TAFE	12	4.0%	70	23.3%	219	72.8%

Faculty	Mean	N	Std. Deviation
Business & Enterprise	3.58	5790	.815
Design	3.76	2519	.831
Engineering & Industrial Sciences	3.49	2178	.840
Information & Communication Technologies	3.56	2118	.867
Life & Social Sciences	3.47	2881	.828
Lilydale	3.67	3380	.857
TAFE	3.94	301	.812
Total	3.60	19167	.841

9. I found the level of difficulty of this subject...

		Frequency	Percent	Valid Percent
Valid	Very Low or Low	1815	9.4	9.5
	High or Very High	17297	89.8	90.5
	Total	19112	99.2	100.0
Missing	System	156	.8	
Total		19268	100.0	

9. I found the level of difficulty of this subject...



Subject Outcomes

The table below includes the frequency and percentage of broadly agree and disagree responses for the item, and table beneath also details the mean of the total responses for each subject, the number of responses (N), the standard deviation (indicating the spread of responses – the higher the standard deviation the wider the spread of responses).

		Very Low or Low		Moderate		Very High or High	
		Count	%	Count	%	Count	%
Faculty	Business & Enterprise	539	9.3%	3003	52.0%	2234	38.7%
	Design	217	8.6%	1327	52.8%	971	38.6%
	Engineering & Industrial Sciences	139	6.4%	1069	49.3%	962	44.3%
	Information & Communication Technologies	197	9.3%	1058	50.0%	863	40.7%
	Life & Social Sciences	374	13.0%	1679	58.4%	822	28.6%
	Lilydale	300	8.9%	1773	52.8%	1285	38.3%
	TAFE	49	16.3%	159	53.0%	92	30.7%

Faculty	Mean	N	Std. Deviation
Business & Enterprise	3.36	5776	.795
Design	3.34	2515	.760
Engineering & Industrial Sciences	3.47	2170	.773
Information & Communication Technologies	3.38	2118	.799
Life & Social Sciences	3.17	2875	.754
Lilydale	3.36	3358	.774
TAFE	3.17	300	.782
Total	3.34	19112	.783

Mean Scores - Division

The tables below list the mean responses for the Higher Education Division as a whole.

Mean Scores for Swinburne Higher Education Division

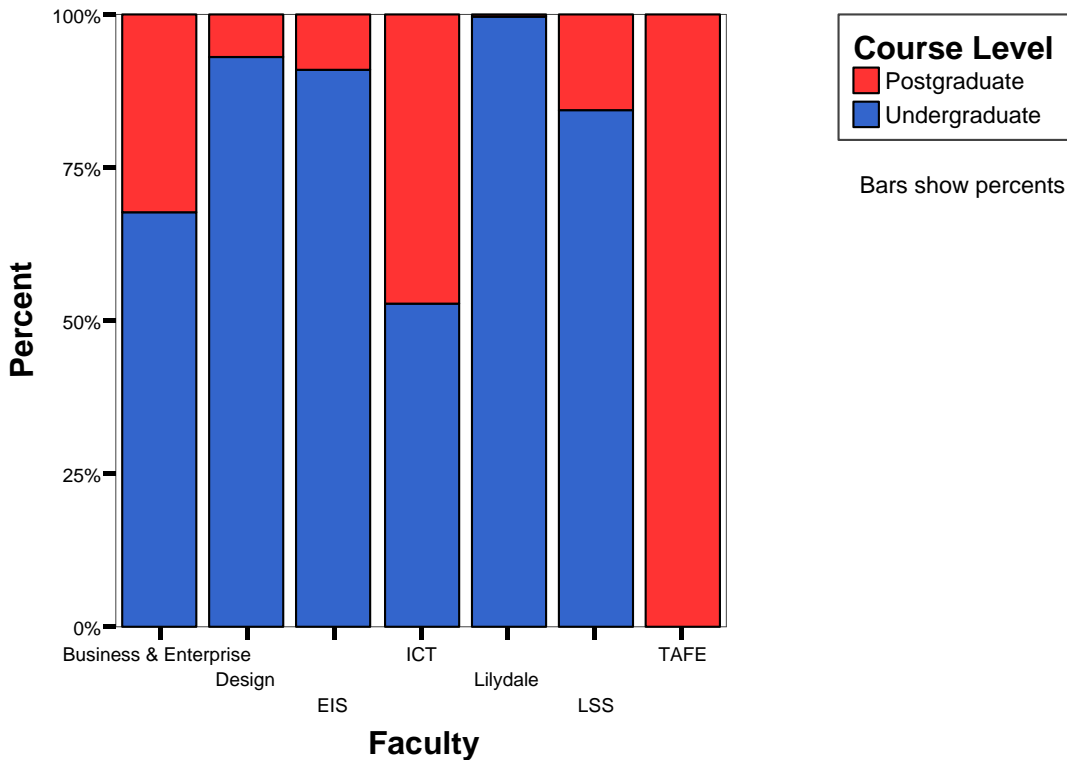
	N	Mean	Std. Deviation
1. The subject is well organised	19202	4.78	1.021
2. Information and concepts are clearly explained	19171	4.69	1.052
3. The subject stimulates my curiosity to learn more about this field	19141	4.59	1.207
4. I am given opportunities to apply my learning	19104	4.77	0.989
5. The assessment requirements are clear	19149	4.75	1.101
6. The assessment tasks align well with the subject content	19099	4.86	0.964
7. The assessment tasks assist my learning	19100	4.81	0.987
8. How would you describe your level of commitment to this subject	19167	3.60	0.841
9. I found the level of difficulty of this subject ...	19112	3.34	0.783
10. I am satisfied with the teaching spaces, facilities and equipment	19105	4.66	1.007
11. The learning materials and resources for this subject meet my learning needs	18765	4.59	0.982
12. The way this subject is delivered meets my needs	19063	4.53	1.033
13. I have received useful feedback	18677	4.52	1.139
14. Overall, I am satisfied with the teaching in this subject	19054	4.77	1.072
15. Overall, I am satisfied with this subject (other than teaching)	18967	4.65	1.020

Respondent Demographics

The tables below describe some of the respondent demographics available by linking the student ID (where provided) with available DEST data. Where a link was not available, this is reported as "Missing".

Respondent course level

		Frequency	Percent	Valid Percent
Valid	Postgraduate	3332	17.3	20.4
	Undergraduate	13004	67.5	79.6
	Total	16336	84.8	100.0
Missing	1	2932	15.2	
Total		19268	100.0	

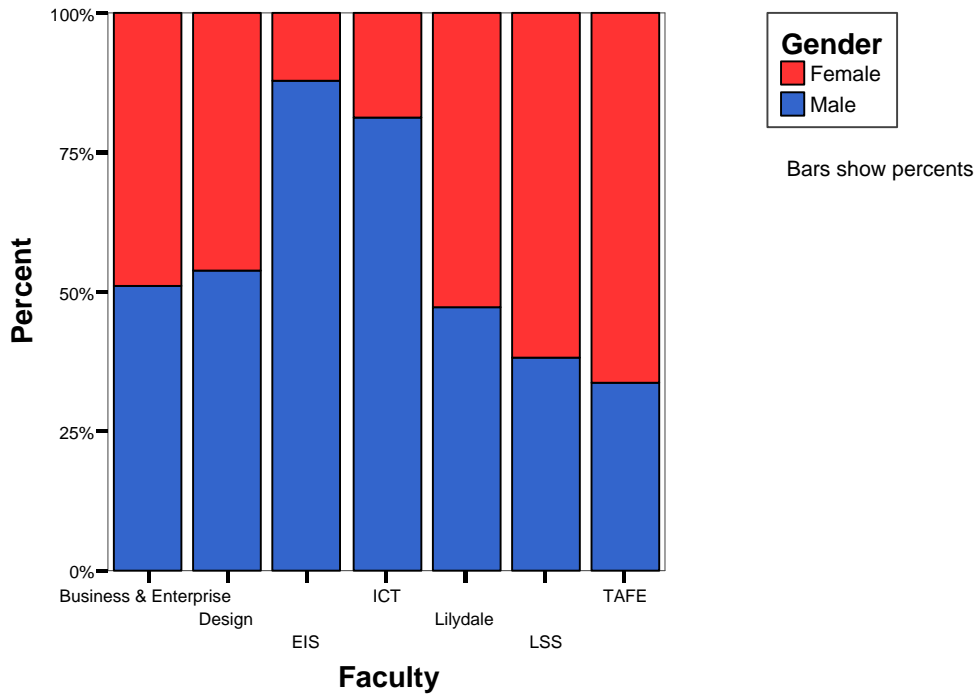


Basis of Admission

		Frequency	Percent	Valid Percent
Valid	HEd Complete/Incomplete	6149	31.9	36.7
	Mature Age	47	.2	.3
	Not Commencing	3905	20.3	23.3
	Other	816	4.2	4.9
	Prof. Qualification	58	.3	.3
	Secondary Education	3833	19.9	22.9
	TAFE	1947	10.1	11.6
	Total	16755	87.0	100.0
Missing	1	2513	13.0	
Total		19268	100.0	

Gender

		Frequency	Percent	Valid Percent
Valid	Female	7475	38.8	44.6
	Male	9280	48.2	55.4
	Total	16755	87.0	100.0
Missing	1	2513	13.0	
Total		19268	100.0	

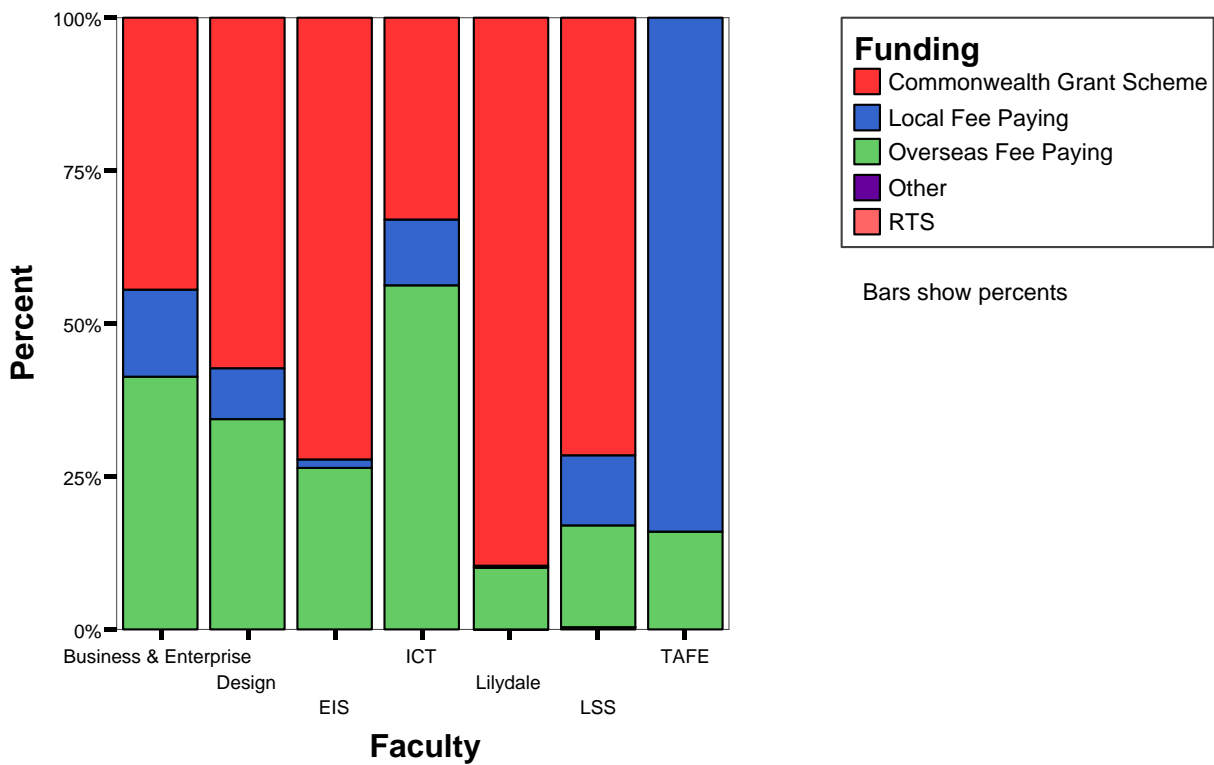


ENTER Score (Commencing respondents only)

		Frequency	Percent	Valid Percent
Valid	41-50	14	.1	.4
	51-60	283	1.5	7.7
	61-70	584	3.0	15.8
	71-80	1037	5.4	28.1
	81-90	980	5.1	26.6
	91-99	791	4.1	21.4
	Total	3689	19.1	100.0
Missing	System	15579	80.9	
Total		19268	100.0	

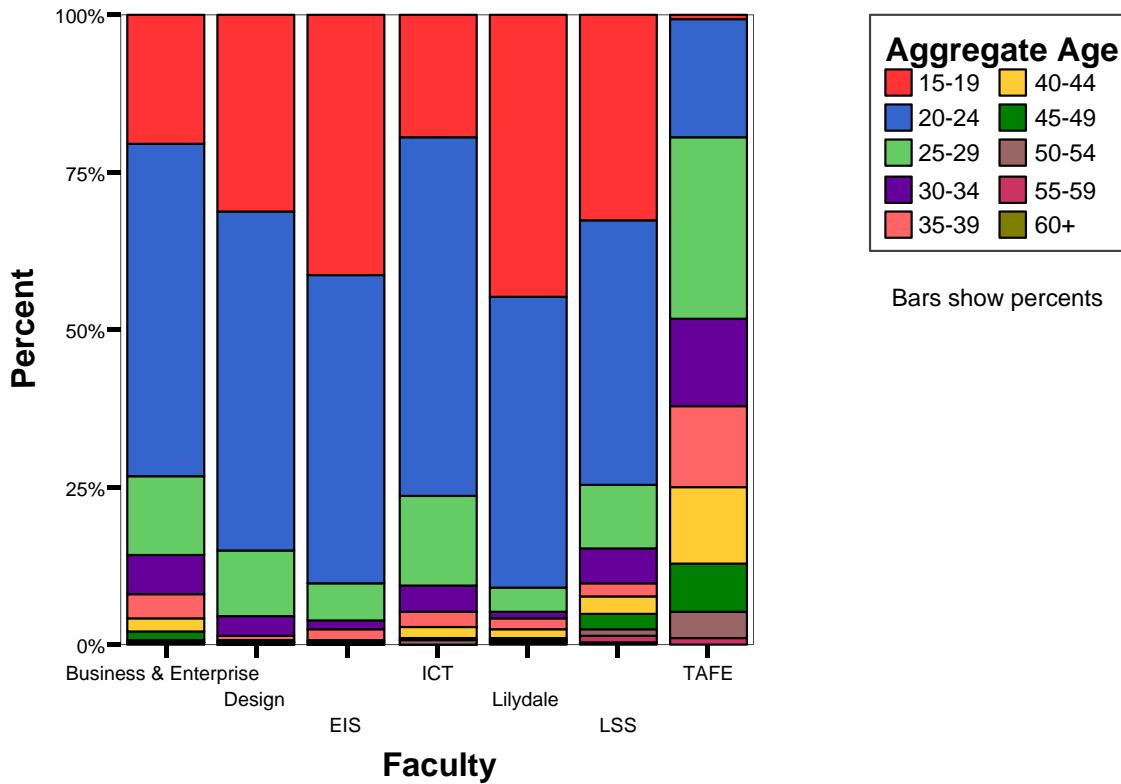
Funding Type

		Frequency	Percent	Valid Percent
Valid	Commonwealth Grant Scheme	9795	50.8	60.0
	Local Fee Paying	1594	8.3	9.8
	Overseas Fee Paying	4937	25.6	30.2
	Other	2	.0	.0
	RTS	8	.0	.0
	Total	16336	84.8	100.0
Missing	1	2932	15.2	
Total		19268	100.0	



Aggregate Age

		Frequency	Percent	Valid Percent
Valid	15-19	5019	26.0	30.0
	20-24	8309	43.1	49.6
	25-29	1697	8.8	10.1
	30-34	708	3.7	4.2
	35-39	405	2.1	2.4
	40-44	287	1.5	1.7
	45-49	181	.9	1.1
	50-54	91	.5	.5
	55-59	45	.2	.3
	60+	13	.1	.1
	Total	16755	87.0	100.0
Missing	System	2513	13.0	
Total		19268	100.0	



Citizenship Status

		Frequency	Percent	Valid Percent
Valid	Australian Citizen	10940	56.8	67.0
	New Zealand Citizen	34	.2	.2
	Permanent Resident	407	2.1	2.5
	International	4933	25.6	30.2
	Other O/S	2	.0	.0
	Humanitarian VISA	20	.1	.1
	Total	16336	84.8	100.0
Missing	1	2932	15.2	
Total		19268	100.0	

