

Evaluation Services
Strategic Planning & Quality Unit

Student Feedback on Subjects Survey

Higher Education Report

July 2006



SWIN
BUR
NE

SWINBURNE UNIVERSITY
OF TECHNOLOGY

Contents

Higher Education Report:	5
Introduction.....	5
Response Rates.....	6
Survey Outcomes (For each item).....	7
Delivery and Assessment	7
2. Information and concepts are clearly explained.....	8
3. The subject stimulates my curiosity to learn more about this field.....	9
4. I am given opportunities to apply my learning	10
5. The assessment requirements are clear.....	11
6. The assessment tasks align well with the subject content.....	12
7. The assessment tasks assist my learning	13
Facilities, Resources and Materials.....	14
10. I am satisfied with the teaching spaces, facilities and equipment.....	14
11. The learning materials and resources for this subject meet my learning needs	15
Delivery Style and Feedback.....	16
12. The way this subject is delivered meets my needs.....	16
13. I have received useful feedback	17
Overall Teaching Satisfaction.....	18
14. Overall, I am satisfied with the teaching in this subject.....	18
Overall Subject Satisfaction	19
15. Overall, I am satisfied with this subject (other than teaching).....	19
Student Commitment and Subject Difficulty	20
8. How would you describe your level of commitment to this subject.....	20
9. I found the level if difficulty of this subject	21
Summary Mean Scores - Faculty	22
Respondent Demographics	23
Course Level of Respondents.....	23
Gender.....	23
Funding Type.....	24
Citizenship Status	24
Basis of Admission	25
ENTER Score (Commencing only)	25

Higher Education Report:

Introduction

This report summarises overall performance across the Division against all items in the TP2&3, 2006 Student Feedback on Subjects Survey. The aim is to provide a snapshot of the Division's performance, and also to identify areas for which improvement activities should be undertaken. A report has also been completed for each faculty, and new summary frequency reports and full reports including student comments and some demographics have been distributed to subject convenors.

A pilot version of the updated Student Feedback on Subjects Survey, which was previously trialled in the summer school of 2005/6, was distributed to subject convenors in each faculty and administered in June 2006. This process was slightly later than usual due to final endorsement of the survey instrument and process. Most surveys were distributed and returned in the last two weeks of classes, with a nominated student responsible for the return of completed surveys to a central location. It should be noted that there is the possibility that security of the forms was compromised by staff or students having the opportunity to access or discard completed forms in transit and that this is being investigated as part of the pilot.

At this stage, the policy relating to the benchmark below which faculties are required to develop formal improvement plans overseen by the APQC (Academic Programs Quality Committee) is under review. Information relating to this will be sent to faculties as soon as it becomes available.

Please note that work is also continuing on the trial and development of a Student Feedback on Teaching instrument.

An Excel spreadsheet including mean results for all Faculty subjects for each survey item, is being distributed with this report and copies of all subject reports will be made available to the Divisional Office on CD.

Please direct any comments or suggestions on the content of this report to Lisa Bolton on 9214 5331 or by e-mail (lbolton@swin.edu.au).

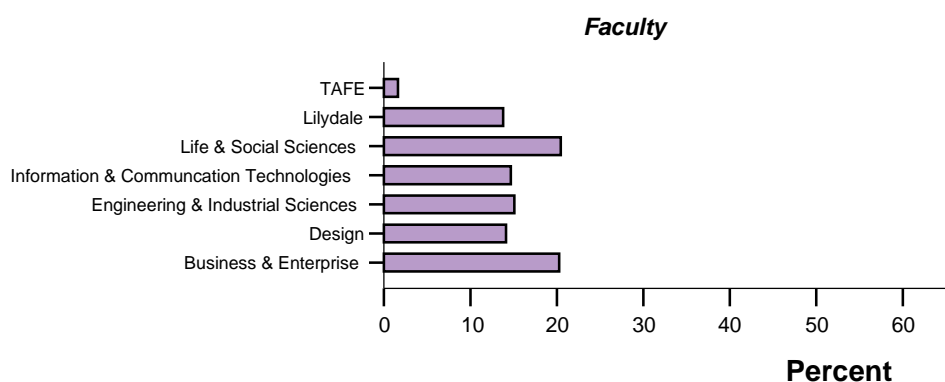
Response Rates

Please note that the number of subjects returned may be lower than usual due to delays in the release of the surveys to subject convenors.

Responses by faculty

(For subjects where surveys were returned)

		Responses	Enrolled	% Response Rate	% of Division Responses
Valid	Business & Enterprise	3342	5879	56.8	20.3
	Design	2330	3918	59.5	14.1
	Engineering & Industrial Sciences	2489	4438	56.1	15.1
	Information & Communication Technologies*	2420	5295	45.7	14.7
	Life & Social Sciences	3373	5991	56.3	20.4
	Lilydale	2275	4345	52.2	13.8
	TAFE	268	416	64.4	1.6
	NICA	0	0	0	0
	Total	16497	30282	54.5	100.0



Faculty Return Rates (All Planned Subjects)

	Planned Subjects	Returned Subjects	% Subjects returned	Planned Sample	Returned Surveys	% responses to planned
Business & Enterprise	112	90	80.4	6563	3342	50.92
Design	86	77	89.5	4211	2330	55.33
Engineering & Industrial Sciences	83	61	73.5	4864	2489	51.17
Information & Communication Technologies*	107	87	81.3	6148	2420	39.36
Life & Social Sciences	153	131	85.6	6917	3373	48.76
Lilydale	94	48	51.1	5243	2275	43.39
TAFE	27	16	59.3	486	268	55.14
NICA	3	0	0	72	0	0
Total	665	510	76.7	34504	16497	47.8

*Not including Astrophysics (online)

** Some surveys for were received very late or on previously issued forms and are not included in the above figures.

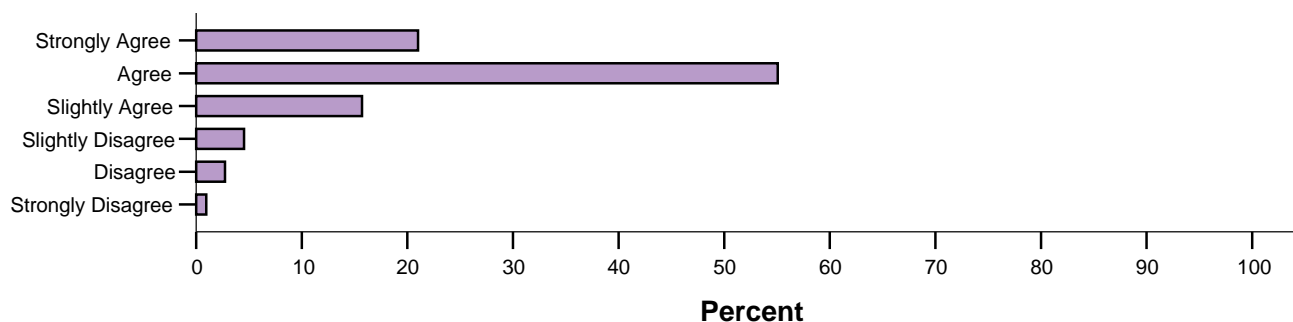
Survey Outcomes (For each item)

Delivery and Assessment

1. The subject is well organised

		Frequency	Percent	Valid Percent
Valid	Broadly Agree	15092	91.5	91.8
	Broadly Disagree	1350	8.2	8.2
	Total	16442	99.7	100.0
Missing	Not Applicable	15	.1	
	System	40	.2	
	Total	55	.3	
Total		16497	100.0	

1. The subject is well organised



Subject Outcomes

The tables below include the mean of the total responses for each subject, the number of responses (N), the standard deviation (indicating the spread of responses – the higher the standard deviation the wider the spread of responses) and also the frequency and percentage of broadly agree and disagree responses for the item.

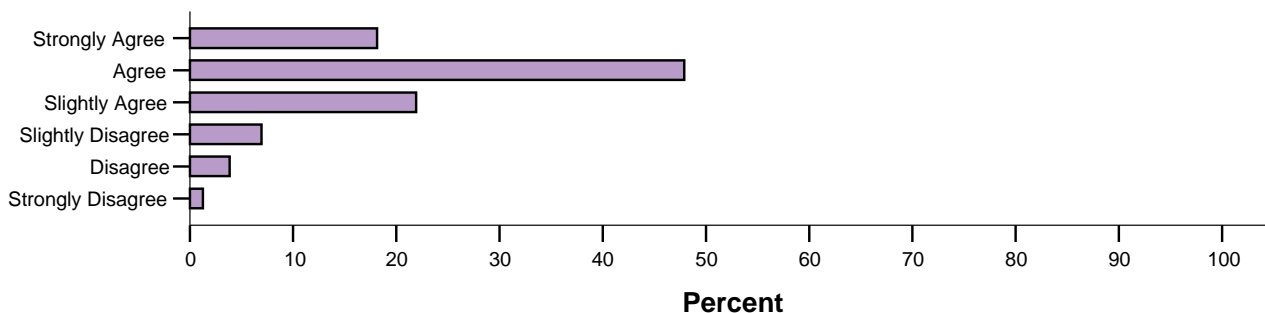
		Broadly Agree		Broadly Disagree	
		Count	%	Count	%
Faculty	Business & Enterprise	3088	92.6%	247	7.4%
	Design	2083	89.8%	237	10.2%
	Engineering & Industrial Sciences	2236	90.5%	234	9.5%
	Information & Communication Technologies	2190	90.9%	220	9.1%
	Life & Social Sciences	3123	92.8%	243	7.2%
	Lilydale	2127	93.6%	146	6.4%
	TAFE	245	91.4%	23	8.6%

Faculty	Mean	N	Std. Deviation
Business & Enterprise	4.87	3335	.933
Design	4.72	2320	.999
Engineering & Industrial Sciences	4.73	2470	.984
Information & Communication Technologies	4.79	2410	.969
Life & Social Sciences	4.97	3366	.947
Lilydale	4.92	2273	.902
TAFE	4.81	268	.999
Total	4.84	16442	.960

2. Information and concepts are clearly explained

		Frequency	Percent	Valid Percent
Valid	Broadly Agree	14441	87.5	87.9
	Broadly Disagree	1980	12.0	12.1
	Total	16421	99.5	100.0
Missing	Not Applicable	17	.1	
	System	59	.4	
	Total	76	.5	
Total		16497	100.0	

2. Information and concepts are clearly explained



Subject Outcomes

The tables below include the mean of the total responses for each subject, the number of responses (N), the standard deviation (indicating the spread of responses – the higher the standard deviation the wider the spread of responses) and also the frequency and percentage of broadly agree and disagree responses for the item.

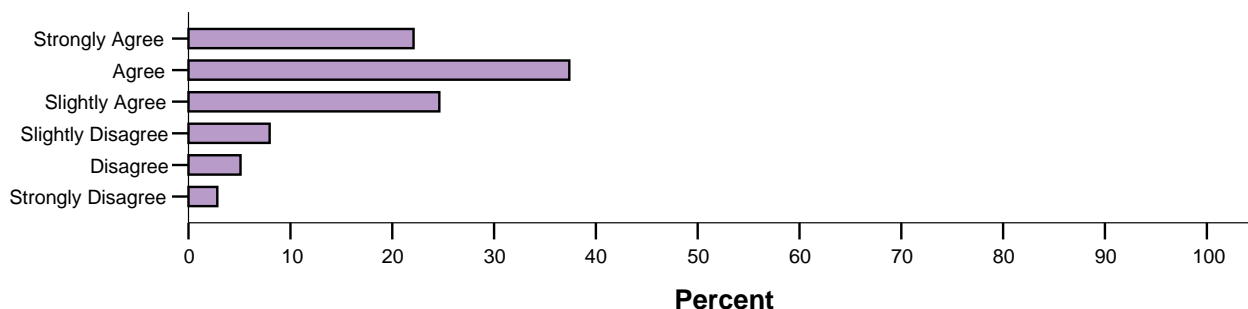
		Broadly Agree		Broadly Disagree	
		Count	%	Count	%
Faculty	Business & Enterprise	3002	90.2%	326	9.8%
	Design	2018	86.9%	303	13.1%
	Engineering & Industrial Sciences	2022	81.8%	451	18.2%
	Information & Communication Technologies	2092	86.9%	314	13.1%
	Life & Social Sciences	3052	90.9%	307	9.1%
	Lilydale	2012	88.8%	255	11.2%
	TAFE	243	91.0%	24	9.0%

Faculty	Mean	N	Std. Deviation
Business & Enterprise	4.71	3328	.998
Design	4.63	2321	1.060
Engineering & Industrial Sciences	4.42	2473	1.152
Information & Communication Technologies	4.62	2406	1.081
Life & Social Sciences	4.82	3359	1.001
Lilydale	4.65	2267	1.011
TAFE	4.81	267	1.045
Total	4.66	16421	1.054

3. The subject stimulates my curiosity to learn more about this field

		Frequency	Percent	Valid Percent
Valid	Broadly Agree	13777	83.5	84.1
	Broadly Disagree	2602	15.8	15.9
	Total	16379	99.3	100.0
Missing	Not Applicable	45	.3	
	System	73	.4	
	Total	118	.7	
Total		16497	100.0	

3. The subject stimulates my curiosity to learn more about this field



Subject Outcomes

The tables below include the mean of the total responses for each subject, the number of responses (N), the standard deviation (indicating the spread of responses – the higher the standard deviation the wider the spread of responses) and also the frequency and percentage of broadly agree and disagree responses for the item.

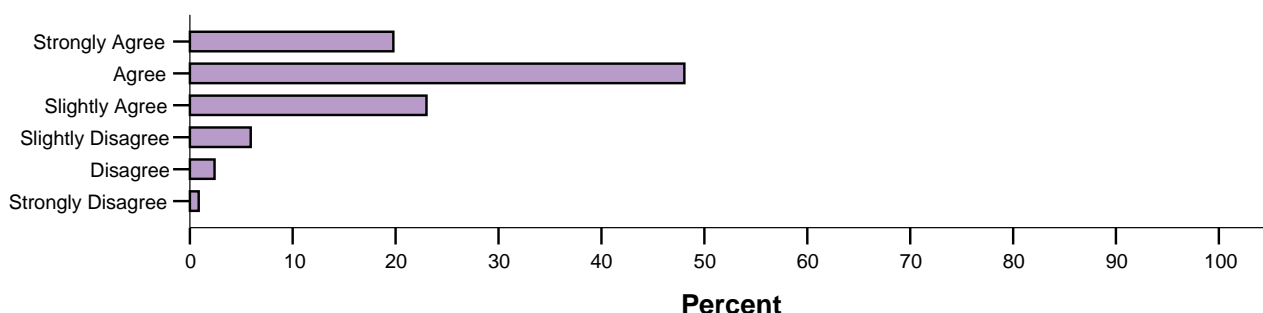
		Broadly Agree		Broadly Disagree	
		Count	%	Count	%
Faculty	Business & Enterprise	2904	87.5%	416	12.5%
	Design	2060	89.1%	253	10.9%
	Engineering & Industrial Sciences	1909	77.6%	551	22.4%
	Information & Communication Technologies	1967	82.2%	427	17.8%
	Life & Social Sciences	2875	85.5%	488	14.5%
	Lilydale	1814	80.2%	448	19.8%
	TAFE	248	92.9%	19	7.1%

Faculty	Mean	N	Std. Deviation
Business & Enterprise	4.64	3320	1.121
Design	4.75	2313	1.093
Engineering & Industrial Sciences	4.29	2460	1.275
Information & Communication Technologies	4.49	2394	1.290
Life & Social Sciences	4.67	3363	1.239
Lilydale	4.34	2262	1.274
TAFE	4.85	267	.990
Total	4.55	16379	1.222

4. I am given opportunities to apply my learning

		Frequency	Percent	Valid Percent
Valid	Broadly Agree	14857	90.1	90.8
	Broadly Disagree	1502	9.1	9.2
	Total	16359	99.2	100.0
Missing	Not Applicable	47	.3	
	System	91	.6	
	Total	138	.8	
Total		16497	100.0	

4. I am given opportunities to apply my learning



Subject Outcomes

The tables below include the mean of the total responses for each subject, the number of responses (N), the standard deviation (indicating the spread of responses – the higher the standard deviation the wider the spread of responses) and also the frequency and percentage of broadly agree and disagree responses for the item.

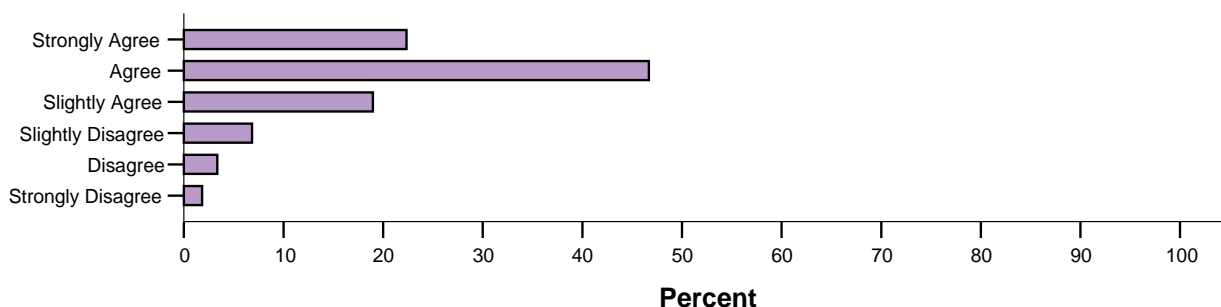
		Broadly Agree		Broadly Disagree	
		Count	%	Count	%
Faculty	Business & Enterprise	3019	91.1%	296	8.9%
	Design	2153	93.2%	158	6.8%
	Engineering & Industrial Sciences	2117	86.0%	346	14.0%
	Information & Communication Technologies	2159	90.1%	237	9.9%
	Life & Social Sciences	3085	92.0%	268	8.0%
	Lilydale	2079	92.1%	178	7.9%
	TAFE	245	92.8%	19	7.2%

Faculty	Mean	N	Std. Deviation
Business & Enterprise	4.73	3315	.957
Design	4.89	2311	.911
Engineering & Industrial Sciences	4.55	2463	1.079
Information & Communication Technologies	4.72	2396	.982
Life & Social Sciences	4.84	3353	.976
Lilydale	4.70	2257	.908
TAFE	4.87	264	.928
Total	4.74	16359	.976

5. The assessment requirements are clear

		Frequency	Percent	Valid Percent
Valid	Broadly Agree	14441	87.5	88.0
	Broadly Disagree	1972	12.0	12.0
	Total	16413	99.5	100.0
Missing	Not Applicable	25	.2	
	System	59	.4	
	Total	84	.5	
Total		16497	100.0	

5. The assessment requirements are clear



Subject Outcomes

The tables below include the mean of the total responses for each subject, the number of responses (N), the standard deviation (indicating the spread of responses – the higher the standard deviation the wider the spread of responses) and also the frequency and percentage of broadly agree and disagree responses for the item.

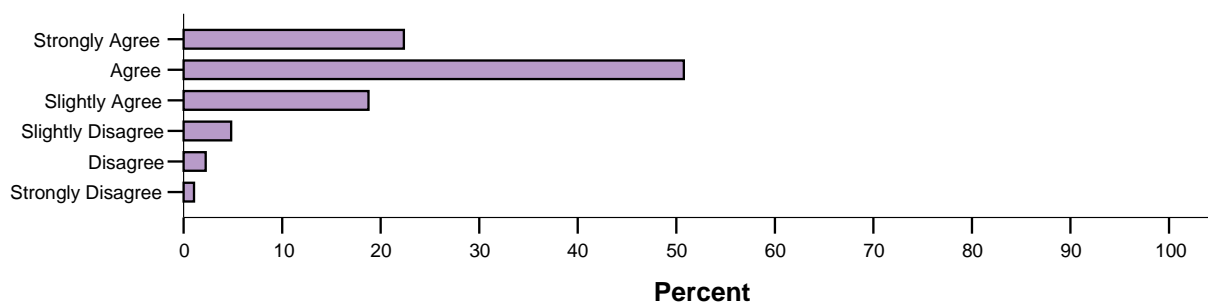
			Broadly Agree		Broadly Disagree	
			Count	%	Count	%
Faculty	Business & Enterprise		2922	87.8%	406	12.2%
	Design		1996	86.0%	325	14.0%
	Engineering & Industrial Sciences		2146	87.0%	321	13.0%
	Information & Communication Technologies		2089	87.0%	312	13.0%
	Life & Social Sciences		3001	89.3%	359	10.7%
	Lilydale		2046	90.2%	222	9.8%
	TAFE		241	89.9%	27	10.1%

Faculty	Mean	N	Std. Deviation
Business & Enterprise	4.71	3328	1.113
Design	4.61	2321	1.094
Engineering & Industrial Sciences	4.68	2467	1.147
Information & Communication Technologies	4.67	2401	1.087
Life & Social Sciences	4.83	3360	1.097
Lilydale	4.78	2268	1.026
TAFE	4.82	268	.994
Total	4.72	16413	1.097

6. The assessment tasks align well with the subject content

		Frequency	Percent	Valid Percent
Valid	Broadly Agree	15038	91.2	91.9
	Broadly Disagree	1329	8.1	8.1
	Total	16367	99.2	100.0
Missing	Not Applicable	51	.3	
	System	79	.5	
	Total	130	.8	
Total		16497	100.0	

6. The assessment tasks align well with the subject content



Subject Outcomes

The tables below include the mean of the total responses for each subject, the number of responses (N), the standard deviation (indicating the spread of responses – the higher the standard deviation the wider the spread of responses) and also the frequency and percentage of broadly agree and disagree responses for the item.

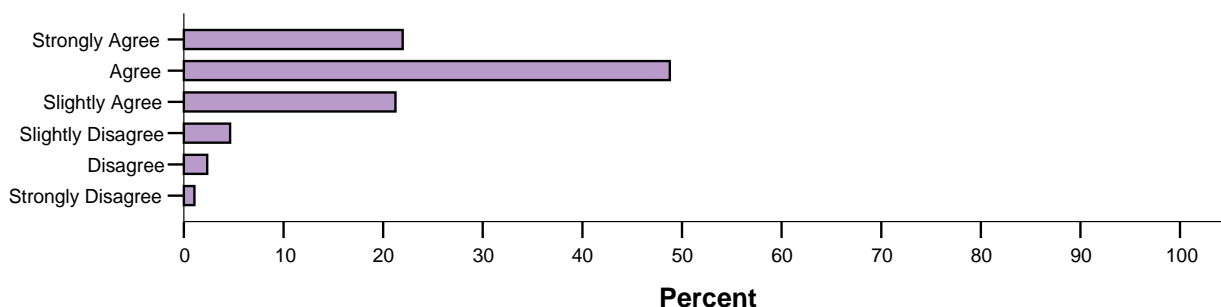
		Broadly Agree		Broadly Disagree	
		Count	%	Count	%
Faculty	Business & Enterprise	3076	92.7%	242	7.3%
	Design	2124	92.2%	180	7.8%
	Engineering & Industrial Sciences	2205	89.4%	261	10.6%
	Information & Communication Technologies	2175	90.7%	222	9.3%
	Life & Social Sciences	3096	92.3%	257	7.7%
	Lilydale	2107	93.2%	154	6.8%
	TAFE	255	95.1%	13	4.9%

Faculty	Mean	N	Std. Deviation
Business & Enterprise	4.84	3318	.939
Design	4.77	2304	.933
Engineering & Industrial Sciences	4.74	2466	1.055
Information & Communication Technologies	4.78	2397	1.007
Life & Social Sciences	4.94	3353	.979
Lilydale	4.86	2261	.915
TAFE	4.96	268	.829
Total	4.83	16367	.972

7. The assessment tasks assist my learning

		Frequency	Percent	Valid Percent
Valid	Broadly Agree	15037	91.1	92.0
	Broadly Disagree	1311	7.9	8.0
	Total	16348	99.1	100.0
Missing	Not Applicable	47	.3	
	System	102	.6	
	Total	149	.9	
Total		16497	100.0	

7. The assessment tasks assist my learning



Subject Outcomes

The tables below include the mean of the total responses for each subject, the number of responses (N), the standard deviation (indicating the spread of responses – the higher the standard deviation the wider the spread of responses) and also the frequency and percentage of broadly agree and disagree responses for the item.

		Broadly Agree		Broadly Disagree	
		Count	%	Count	%
Faculty	Business & Enterprise	3078	92.8%	239	7.2%
	Design	2108	91.4%	198	8.6%
	Engineering & Industrial Sciences	2207	89.7%	254	10.3%
	Information & Communication Technologies	2180	91.4%	206	8.6%
	Life & Social Sciences	3121	93.1%	233	6.9%
	Lilydale	2082	92.3%	174	7.7%
	TAFE	261	97.4%	7	2.6%

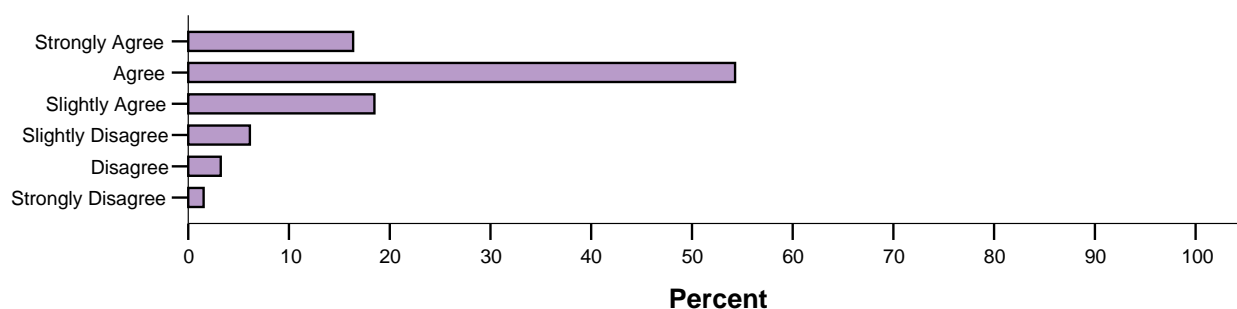
Faculty	Mean	N	Std. Deviation
Business & Enterprise	4.80	3317	.958
Design	4.77	2306	.960
Engineering & Industrial Sciences	4.69	2461	1.067
Information & Communication Technologies	4.79	2386	.982
Life & Social Sciences	4.92	3354	.961
Lilydale	4.76	2256	.946
TAFE	5.04	268	.736
Total	4.80	16348	.978

Facilities, Resources and Materials

10. I am satisfied with the teaching spaces, facilities and equipment

		Frequency	Percent	Valid Percent
Valid	Broadly Agree	14607	88.5	89.1
	Broadly Disagree	1783	10.8	10.9
	Total	16390	99.4	100.0
Missing	Not Applicable	39	.2	
	System	68	.4	
	Total	107	.6	
Total		16497	100.0	

10. I am satisfied with the teaching spaces, facilities and equipment



Subject Outcomes

The tables below include the mean of the total responses for each subject, the number of responses (N), the standard deviation (indicating the spread of responses – the higher the standard deviation the wider the spread of responses) and also the frequency and percentage of broadly agree and disagree responses for the item.

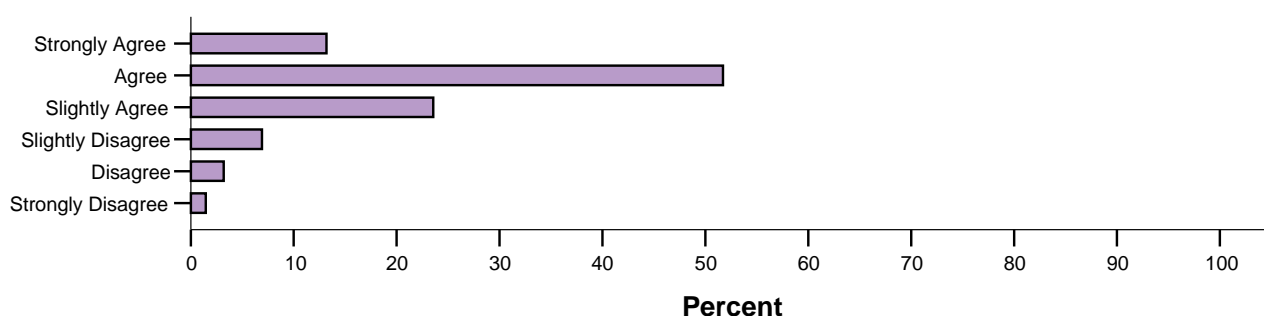
		Broadly Agree		Broadly Disagree	
		Count	%	Count	%
Faculty	Business & Enterprise	3043	91.5%	281	8.5%
	Design	1871	80.9%	443	19.1%
	Engineering & Industrial Sciences	2169	87.9%	299	12.1%
	Information & Communication Technologies	2131	88.6%	274	11.4%
	Life & Social Sciences	3029	90.4%	321	9.6%
	Lilydale	2112	93.4%	149	6.6%
	TAFE	252	94.0%	16	6.0%

Faculty	Mean	N	Std. Deviation
Business & Enterprise	4.77	3324	.946
Design	4.43	2314	1.182
Engineering & Industrial Sciences	4.63	2468	1.044
Information & Communication Technologies	4.67	2405	1.041
Life & Social Sciences	4.78	3350	.997
Lilydale	4.83	2261	.877
TAFE	4.83	268	.784
Total	4.70	16390	1.019

11. The learning materials and resources for this subject meet my learning needs

		Frequency	Percent	Valid Percent
Valid	Broadly Agree	14459	87.6	88.4
	Broadly Disagree	1890	11.5	11.6
	Total	16349	99.1	100.0
Missing	Not Applicable	50	.3	
	System	98	.6	
	Total	148	.9	
Total		16497	100.0	

11. The learning materials and resources for this subject meet my learning needs



Subject Outcomes

The tables below include the mean of the total responses for each subject, the number of responses (N), the standard deviation (indicating the spread of responses – the higher the standard deviation the wider the spread of responses) and also the frequency and percentage of broadly agree and disagree responses for the item.

		Broadly Agree		Broadly Disagree	
		Count	%	Count	%
Faculty	Business & Enterprise	3014	90.9%	302	9.1%
	Design	1942	84.3%	361	15.7%
	Engineering & Industrial Sciences	2090	84.9%	371	15.1%
	Information & Communication Technologies	2070	86.3%	328	13.7%
	Life & Social Sciences	3038	90.9%	304	9.1%
	Lilydale	2060	91.1%	202	8.9%
	TAFE	245	91.8%	22	8.2%

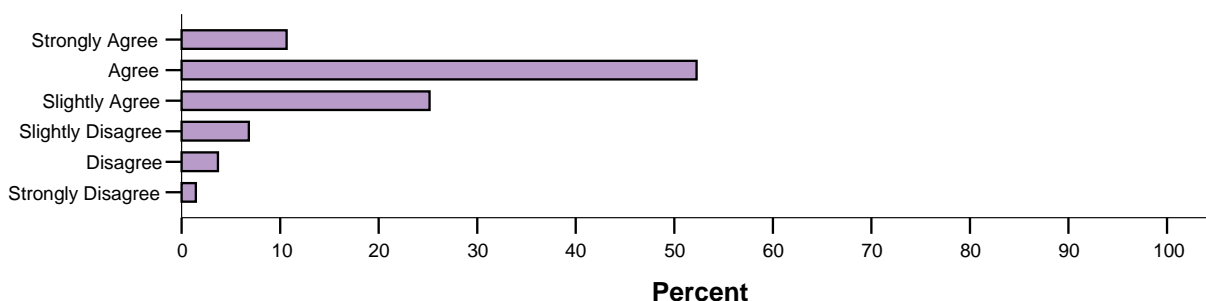
Faculty	Mean	N	Std. Deviation
Business & Enterprise	4.67	3316	.932
Design	4.45	2303	1.046
Engineering & Industrial Sciences	4.47	2461	1.060
Information & Communication Technologies	4.54	2398	1.068
Life & Social Sciences	4.73	3342	.958
Lilydale	4.68	2262	.959
TAFE	4.78	267	.943
Total	4.60	16349	1.004

Delivery Style and Feedback

12. The way this subject is delivered meets my needs

		Frequency	Percent	Valid Percent
Valid	Broadly Agree	14212	86.1	88.1
	Broadly Disagree	1927	11.7	11.9
	Total	16139	97.8	100.0
Missing	Not Applicable	49	.3	
	System	309	1.9	
	Total	358	2.2	
Total		16497	100.0	

12. The way this subject is delivered meets my needs



Subject Outcomes

The tables below include the mean of the total responses for each subject, the number of responses (N), the standard deviation (indicating the spread of responses – the higher the standard deviation the wider the spread of responses) and also the frequency and percentage of broadly agree and disagree responses for the item.

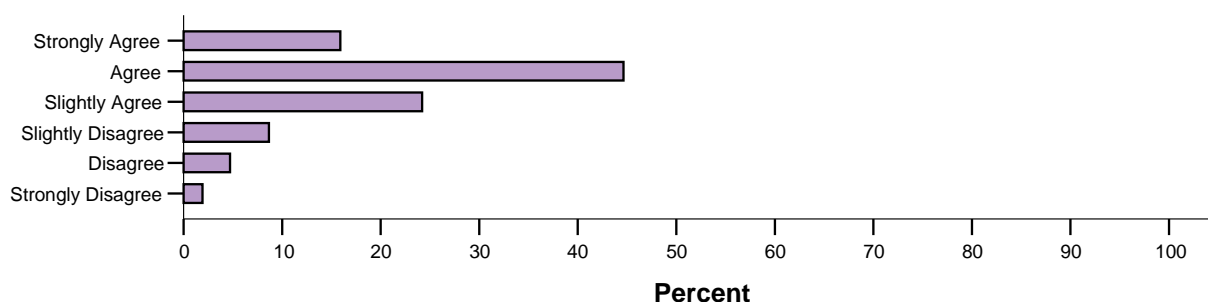
		Broadly Agree		Broadly Disagree	
		Count	%	Count	%
Faculty	Business & Enterprise	2932	89.8%	333	10.2%
	Design	1970	87.4%	285	12.6%
	Engineering & Industrial Sciences	2037	83.7%	398	16.3%
	Information & Communication Technologies	2043	86.3%	325	13.7%
	Life & Social Sciences	2996	90.2%	325	9.8%
	Lilydale	1995	89.4%	236	10.6%
	TAFE	239	90.5%	25	9.5%

Faculty	Mean	N	Std. Deviation
Business & Enterprise	4.58	3265	.940
Design	4.52	2255	.983
Engineering & Industrial Sciences	4.34	2435	1.058
Information & Communication Technologies	4.49	2368	1.047
Life & Social Sciences	4.71	3321	.961
Lilydale	4.57	2231	.966
TAFE	4.72	264	.982
Total	4.55	16139	.995

13. I have received useful feedback

		Frequency	Percent	Valid Percent
Valid	Broadly Agree	13504	81.9	84.7
	Broadly Disagree	2432	14.7	15.3
	Total	15936	96.6	100.0
Missing	Not Applicable	249	1.5	
	System	312	1.9	
	Total	561	3.4	
Total		16497	100.0	

13. I have received useful feedback



Subject Outcomes

The tables below include the mean of the total responses for each subject, the number of responses (N), the standard deviation (indicating the spread of responses – the higher the standard deviation the wider the spread of responses) and also the frequency and percentage of broadly agree and disagree responses for the item.

		Broadly Agree		Broadly Disagree	
		Count	%	Count	%
Faculty	Business & Enterprise	2904	87.5%	416	12.5%
	Design	2060	89.1%	253	10.9%
	Engineering & Industrial Sciences	1909	77.6%	551	22.4%
	Information & Communication Technologies	1967	82.2%	427	17.8%
	Life & Social Sciences	2875	85.5%	488	14.5%
	Lilydale	1814	80.2%	448	19.8%
	TAFE	248	92.9%	19	7.1%

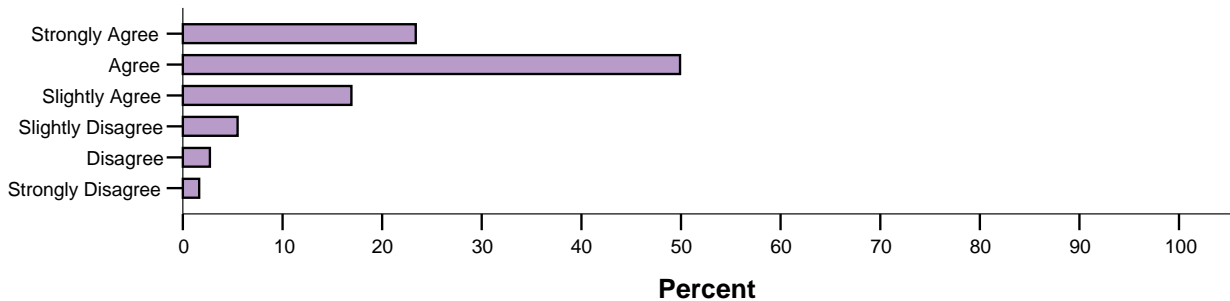
Faculty	Mean	N	Std. Deviation
Business & Enterprise	4.48	3243	1.079
Design	4.66	2253	1.098
Engineering & Industrial Sciences	4.25	2389	1.194
Information & Communication Technologies	4.50	2321	1.096
Life & Social Sciences	4.67	3249	1.101
Lilydale	4.56	2218	1.110
TAFE	4.74	263	1.016
Total	4.53	15936	1.119

Overall Teaching Satisfaction

14. Overall, I am satisfied with the teaching in this subject

		Frequency	Percent	Valid Percent
Valid	Broadly Agree	14592	88.5	90.2
	Broadly Disagree	1590	9.6	9.8
	Total	16182	98.1	100.0
Missing	Not Applicable	26	.2	
	System	289	1.8	
	Total	315	1.9	
Total		16497	100.0	

14. Overall, I am satisfied with the teaching in this subject



Subject Outcomes

The tables below include the mean of the total responses for each subject, the number of responses (N), the standard deviation (indicating the spread of responses – the higher the standard deviation the wider the spread of responses) and also the frequency and percentage of broadly agree and disagree responses for the item.

		Broadly Agree		Broadly Disagree	
		Count	%	Count	%
Faculty	Business & Enterprise	2976	90.8%	302	9.2%
	Design	2021	89.4%	240	10.6%
	Engineering & Industrial Sciences	2081	85.3%	358	14.7%
	Information & Communication Technologies	2113	89.2%	256	10.8%
	Life & Social Sciences	3108	93.2%	228	6.8%
	Lilydale	2051	91.8%	184	8.2%
	TAFE	242	91.7%	22	8.3%

Report

14. Overall, I am satisfied with the teaching in this subject

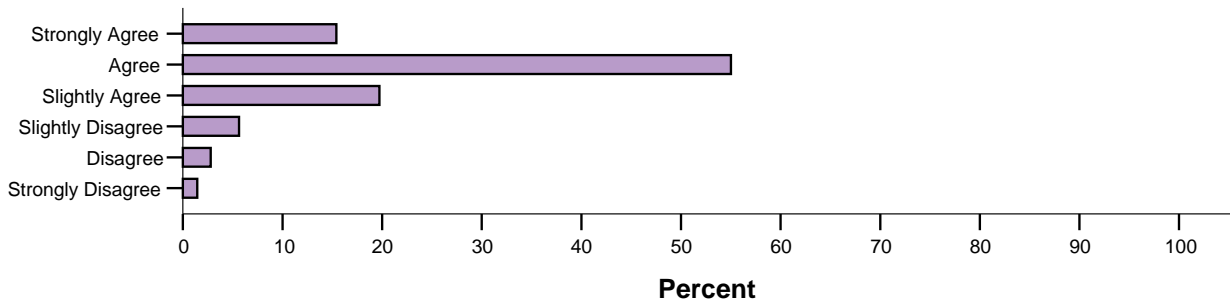
Faculty	Mean	N	Std. Deviation
Business & Enterprise	4.82	3278	1.015
Design	4.76	2261	1.053
Engineering & Industrial Sciences	4.59	2439	1.144
Information & Communication Technologies	4.73	2369	1.065
Life & Social Sciences	4.99	3336	.963
Lilydale	4.89	2235	.998
TAFE	4.87	264	1.082
Total	4.81	16182	1.044

Overall Subject Satisfaction

15. Overall, I am satisfied with this subject (other than teaching)

		Frequency	Percent	Valid Percent
Valid	Broadly Agree	14545	88.2	90.2
	Broadly Disagree	1589	9.6	9.8
	Total	16134	97.8	100.0
Missing	Not Applicable	47	.3	
	System	316	1.9	
	Total	363	2.2	
Total		16497	100.0	

15. Overall, I am satisfied with this subject (other than teaching)



Subject Outcomes

The tables below include the mean of the total responses for each subject, the number of responses (N), the standard deviation (indicating the spread of responses – the higher the standard deviation the wider the spread of responses) and also the frequency and percentage of broadly agree and disagree responses for the item.

		Broadly Agree		Broadly Disagree	
		Count	%	Count	%
Faculty	Business & Enterprise	3034	92.9%	231	7.1%
	Design	2045	90.6%	211	9.4%
	Engineering & Industrial Sciences	2098	86.1%	338	13.9%
	Information & Communication Technologies	2080	88.3%	276	11.7%
	Life & Social Sciences	3049	91.7%	276	8.3%
	Lilydale	1989	89.2%	242	10.8%
	TAFE	250	94.3%	15	5.7%

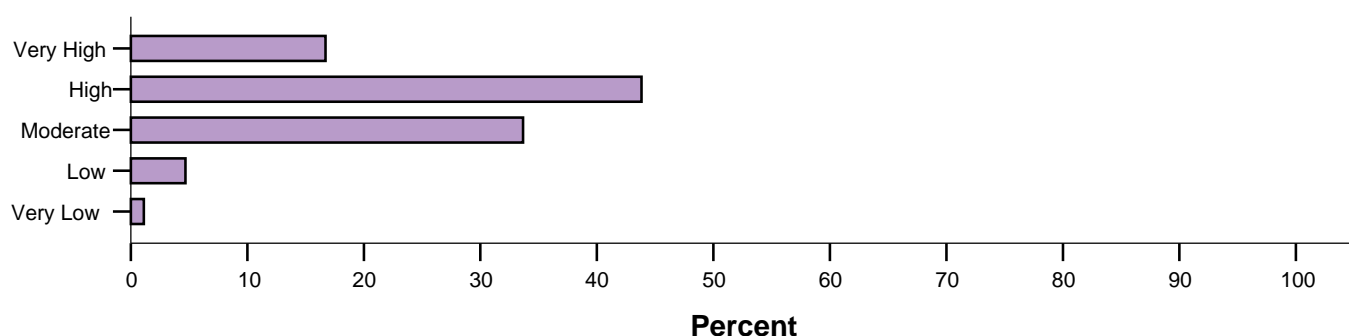
Faculty	Mean	N	Std. Deviation
Business & Enterprise	4.77	3265	.911
Design	4.71	2256	.959
Engineering & Industrial Sciences	4.54	2436	1.064
Information & Communication Technologies	4.62	2356	1.024
Life & Social Sciences	4.82	3325	.949
Lilydale	4.67	2231	1.016
TAFE	4.89	265	.778
Total	4.70	16134	.984

Student Commitment and Subject Difficulty

8. How would you describe your level of commitment to this subject

		Frequency	Percent	Valid Percent
Valid	Very Low or Low	951	5.8	5.8
	Moderate	5519	33.5	33.7
	High or Very High	9927	60.2	60.5
	Total	16397	99.4	100.0
Missing	System	100	.6	
Total		16497	100.0	

8. How would you describe your level of commitment to this subject



Subject Outcomes

The tables below include the mean of the total responses for each subject, the number of responses (N), the standard deviation (indicating the spread of responses – the higher the standard deviation the wider the spread of responses) and also the frequency and percentage of Very Low/Low, Moderate and Very High/High responses for the item.

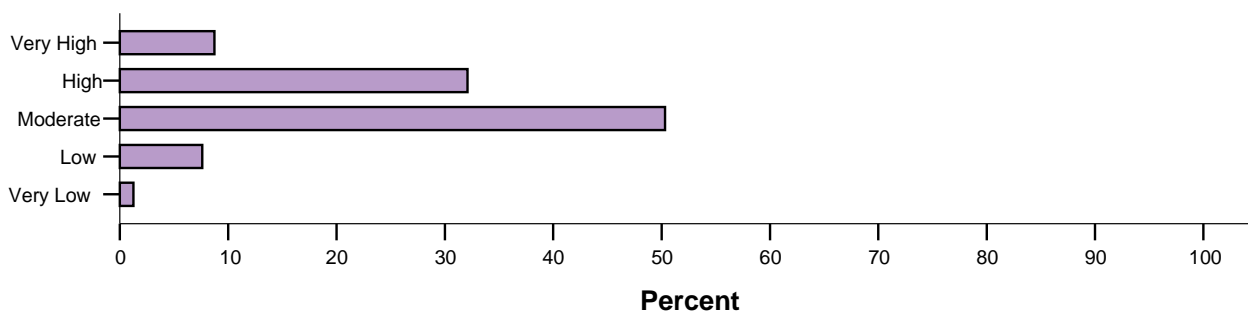
		Very Low or Low		Moderate		High or Very High	
		Count	%	Count	%	Count	%
Faculty	Business & Enterprise	155	4.7%	1229	37.0%	1937	58.3%
	Design	81	3.5%	664	28.8%	1562	67.7%
	Engineering & Industrial Sciences	199	8.0%	908	36.7%	1367	55.3%
	Information & Communication Technologies	162	6.7%	799	33.2%	1449	60.1%
	Life & Social Sciences	185	5.5%	1032	30.8%	2136	63.7%
	Lilydale	163	7.2%	823	36.3%	1279	56.5%
	TAFE	6	2.2%	64	24.0%	197	73.8%

Faculty	Mean	N	Std. Deviation
Business & Enterprise	3.67	3321	.793
Design	3.84	2307	.788
Engineering & Industrial Sciences	3.59	2474	.876
Information & Communication Technologies	3.69	2410	.859
Life & Social Sciences	3.77	3353	.844
Lilydale	3.62	2265	.850
TAFE	4.01	267	.832
Total	3.70	16397	.839

9. I found the level if difficulty of this subject ...

		Frequency	Percent	Valid Percent
Valid	Very Low or Low	1438	8.7	8.9
	Moderate	8170	49.5	50.3
	High or Very High	6628	40.2	40.8
	Total	16236	98.4	100.0
Missing	System	261	1.6	
Total		16497	100.0	

9. I found the level if difficulty of this subject ...



Subject Outcomes

The tables below include the mean of the total responses for each subject, the number of responses (N), the standard deviation (indicating the spread of responses – the higher the standard deviation the wider the spread of responses) and also the frequency and percentage of Very Low/Low, Moderate and Very High/High responses for the item.

		Very Low or Low		Moderate		High or Very High	
		Count	%	Count	%	Count	%
Faculty	Business & Enterprise	299	9.1%	1720	52.3%	1268	38.6%
	Design	160	7.0%	1193	52.1%	937	40.9%
	Engineering & Industrial Sciences	187	7.6%	1046	42.7%	1217	49.7%
	Information & Communication Technologies	234	9.8%	1135	47.4%	1023	42.8%
	Life & Social Sciences	283	8.5%	1690	51.0%	1339	40.4%
	Lilydale	230	10.3%	1239	55.3%	771	34.4%
	TAFE	45	17.0%	147	55.5%	73	27.5%

Faculty	Mean	N	Std. Deviation
Business & Enterprise	3.35	3287	.769
Design	3.40	2290	.756
Engineering & Industrial Sciences	3.53	2450	.837
Information & Communication Technologies	3.42	2392	.849
Life & Social Sciences	3.39	3312	.783
Lilydale	3.31	2240	.792
TAFE	3.09	265	.850
Total	3.39	16236	.801

Summary Mean Scores - Faculty

The table below lists the mean responses for each faculty as compared to the Higher Education Division as a whole.

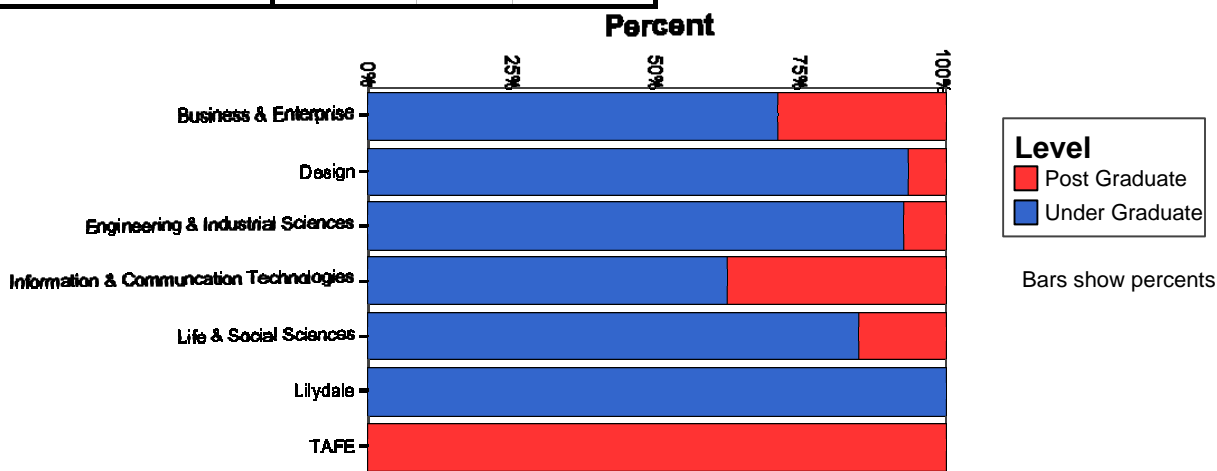
Faculty		1. The subject is well organised	2. Information and concepts are clearly explained	3. The subject stimulates my curiosity to learn more about this field	4. I am given opportunities to apply my learning	5. The assessment requirements are clear	6. The assessment tasks align well with the subject content	7. The assessment tasks assist my learning	8. How would you describe your level of commitment to this subject	9. I found the level of difficulty of this subject ...	10. I am satisfied with the teaching spaces, facilities and equipment	11. The learning materials and resources for this subject meet my learning needs	12. The way this subject is delivered meets my needs	13. I have received useful feedback	14. Overall, I am satisfied with the teaching in this subject	15. Overall, I am satisfied with this subject (other than teaching)
B&E	Mean	4.87	4.71	4.64	4.73	4.71	4.84	4.80	3.67	3.35	4.77	4.67	4.58	4.48	4.82	4.77
B&E	N	3335	3328	3320	3315	3328	3318	3317	3321	3287	3324	3316	3265	3243	3278	3265
B&E	SDev	0.93	1.00	1.12	0.96	1.11	0.94	0.96	0.79	0.77	0.95	0.93	0.94	1.08	1.01	0.91
DESIGN	Mean	4.72	4.63	4.75	4.89	4.61	4.77	4.77	3.84	3.40	4.43	4.45	4.52	4.66	4.76	4.71
DESIGN	N	2320	2321	2313	2311	2321	2304	2306	2307	2290	2314	2303	2255	2253	2261	2256
DESIGN	SDev	1.00	1.06	1.09	0.91	1.09	0.93	0.96	0.79	0.76	1.18	1.05	0.98	1.10	1.05	0.96
EIS	Mean	4.73	4.42	4.29	4.55	4.68	4.74	4.69	3.59	3.53	4.63	4.47	4.34	4.25	4.59	4.54
EIS	N	2470	2473	2460	2463	2467	2466	2461	2474	2450	2468	2461	2435	2389	2439	2436
EIS	SDev	0.98	1.15	1.27	1.08	1.15	1.06	1.07	0.88	0.84	1.04	1.06	1.06	1.19	1.14	1.06
ICT	Mean	4.79	4.62	4.49	4.72	4.67	4.78	4.79	3.69	3.42	4.67	4.54	4.49	4.50	4.73	4.62
ICT	N	2410	2406	2394	2396	2401	2397	2386	2410	2392	2405	2398	2368	2321	2369	2356
ICT	SDev	0.97	1.08	1.29	0.98	1.09	1.01	0.98	0.86	0.85	1.04	1.07	1.05	1.10	1.07	1.02
LSS	Mean	4.97	4.82	4.67	4.84	4.83	4.94	4.92	3.77	3.39	4.78	4.73	4.71	4.67	4.99	4.82
LSS	N	3366	3359	3363	3353	3360	3353	3354	3353	3312	3350	3342	3321	3249	3336	3325
LSS	SDev	0.95	1.00	1.24	0.98	1.10	0.98	0.96	0.84	0.78	1.00	0.96	0.96	1.10	0.96	0.95
Lily	Mean	4.92	4.65	4.34	4.70	4.78	4.86	4.76	3.62	3.31	4.83	4.68	4.57	4.56	4.89	4.67
Lily	N	2273	2267	2262	2257	2268	2261	2256	2265	2240	2261	2262	2231	2218	2235	2231
Lily	SDev	0.90	1.01	1.27	0.91	1.03	0.92	0.95	0.85	0.79	0.88	0.96	0.97	1.11	1.00	1.02
TAFE	Mean	4.81	4.81	4.85	4.87	4.82	4.96	5.04	4.01	3.09	4.83	4.78	4.72	4.74	4.87	4.89
TAFE	N	268	267	267	264	268	268	268	267	265	268	267	264	263	264	265
TAFE	SDev	1.00	1.05	0.99	0.93	0.99	0.83	0.74	0.83	0.85	0.78	0.94	0.98	1.02	1.08	0.78
HED	Mean	4.84	4.66	4.55	4.74	4.72	4.83	4.80	3.70	3.39	4.70	4.60	4.55	4.53	4.81	4.70
HED	N	16442	16421	16379	16359	16413	16367	16348	16397	16236	16390	16349	16139	15936	16182	16134
HED	SDev	0.96	1.05	1.22	0.98	1.10	0.97	0.98	0.84	0.80	1.02	1.00	1.00	1.12	1.04	0.98

Respondent Demographics

The tables below describe some of the respondent demographics available by linking the student ID (where provided) with available DEST data. Where a link was not available, this is reported as "Not supplied".

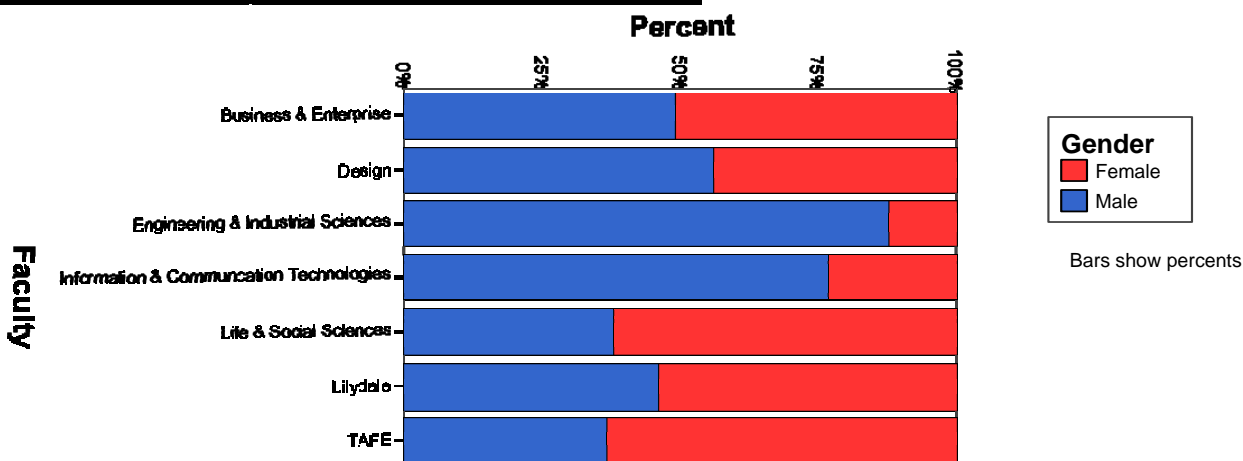
Course Level of Respondents

		Frequency	Percent	Valid Percent
Valid	Post Graduate	2380	14.4	17.9
	Under Graduate	10890	66.0	82.1
	Total	13270	80.4	100.0
Missing	Not Supplied	3227	19.6	
Total		16497	100.0	



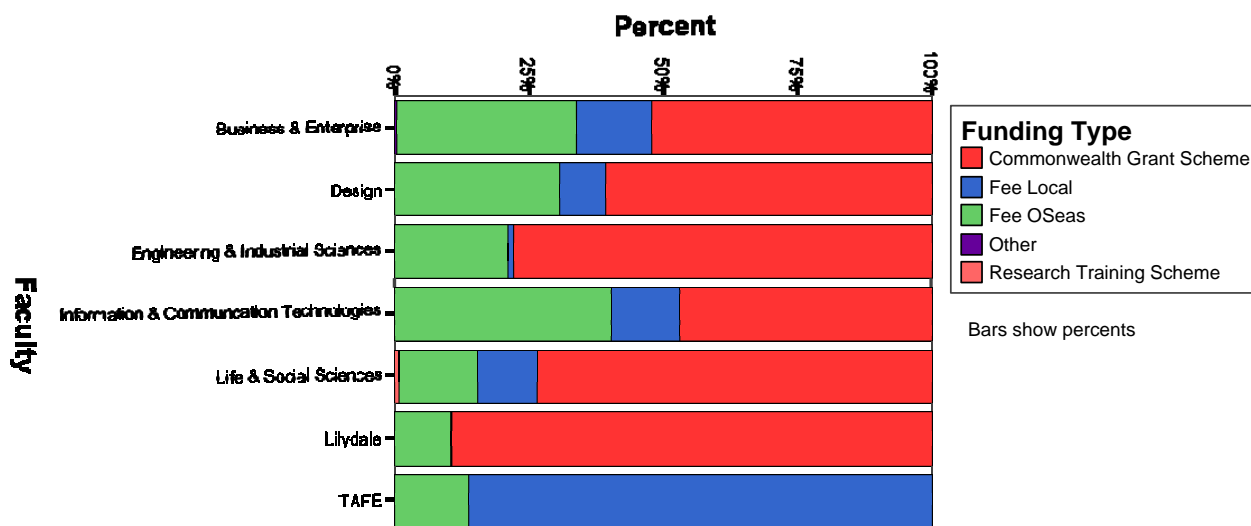
Gender

		Frequency	Percent	Valid Percent
Valid	Female	5053	30.6	44.5
	Male	6310	38.2	55.5
	Total	11363	68.9	100.0
Missing	Not Supplied	5134	31.1	
Total		16497	100.0	



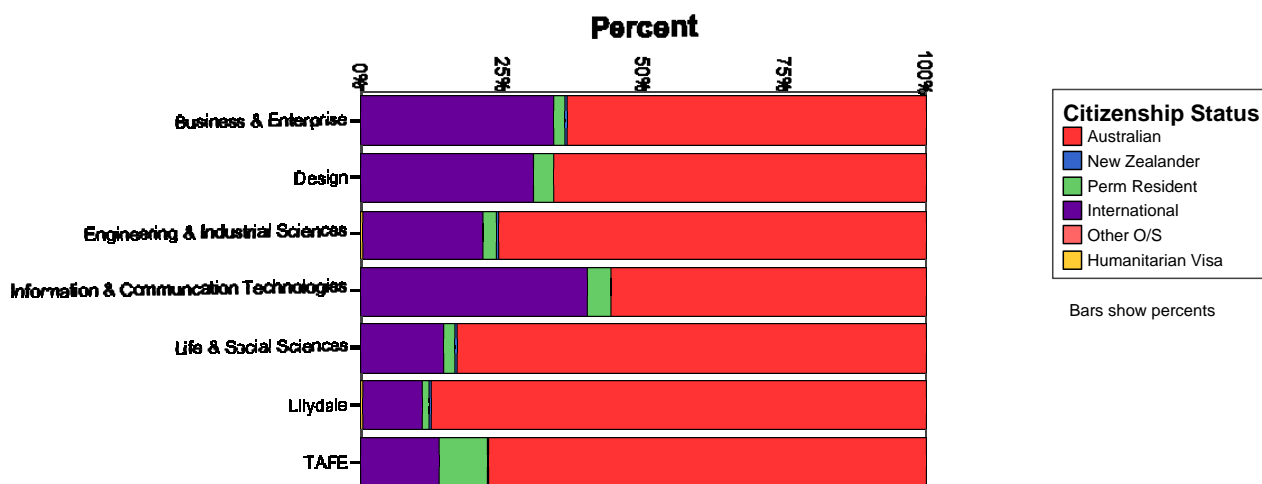
Funding Type

		Frequency	Percent	Valid Percent
Valid	Commonwealth Grant Scheme	8721	52.9	65.7
	Fee Local	1265	7.7	9.5
	Fee OSeas	3253	19.7	24.5
	Other	4	.0	.0
	Research Training Scheme	27	.2	.2
	Total	13270	80.4	100.0
Missing	Not Supplied	3227	19.6	
Total		16497	100.0	



Citizenship Status

		Frequency	Percent	Valid Percent
Valid	Australian	9621	58.3	72.5
	New Zealander	32	.2	.2
	Perm Resident	349	2.1	2.6
	International	3252	19.7	24.5
	Other O/S	1	.0	.0
	Humanitarian Visa	15	.1	.1
	Total	13270	80.4	100.0
Missing	Not Supplied	3227	19.6	
Total		16497	100.0	



Basis of Admission

		Frequency	Percent	Valid Percent
Valid	HEd Complete/Incomplete	2345	14.2	20.7
	Mature Age	21	.1	.2
	Not Commencing	3593	21.8	31.8
	Other	362	2.2	3.2
	Prof. qualification	53	.3	.5
	Secondary education	3606	21.9	31.9
	TAFE	1336	8.1	11.8
	Total	11316	68.6	100.0
Missing	Not Supplied	5181	31.4	
Total		16497	100.0	

ENTER Score (Commencing only)

NB This information could be compiled for all respondents (with valid ID, however the information would need to be collected from previous years for not commencing students)

		Frequency	Percent	Valid Percent
Valid	Under 40	3	.0	.1
	40 - 49	8	.0	.3
	50 - 59	199	1.2	6.3
	60 - 69	517	3.1	16.3
	70 - 79	1001	6.1	31.6
	80 - 89	1038	6.3	32.8
	90-99	402	2.4	12.7
	Total	3168	19.2	100.0
Missing	NA	8195	49.7	
	System	5134	31.1	
	Total	13329	80.8	
Total		16497	100.0	