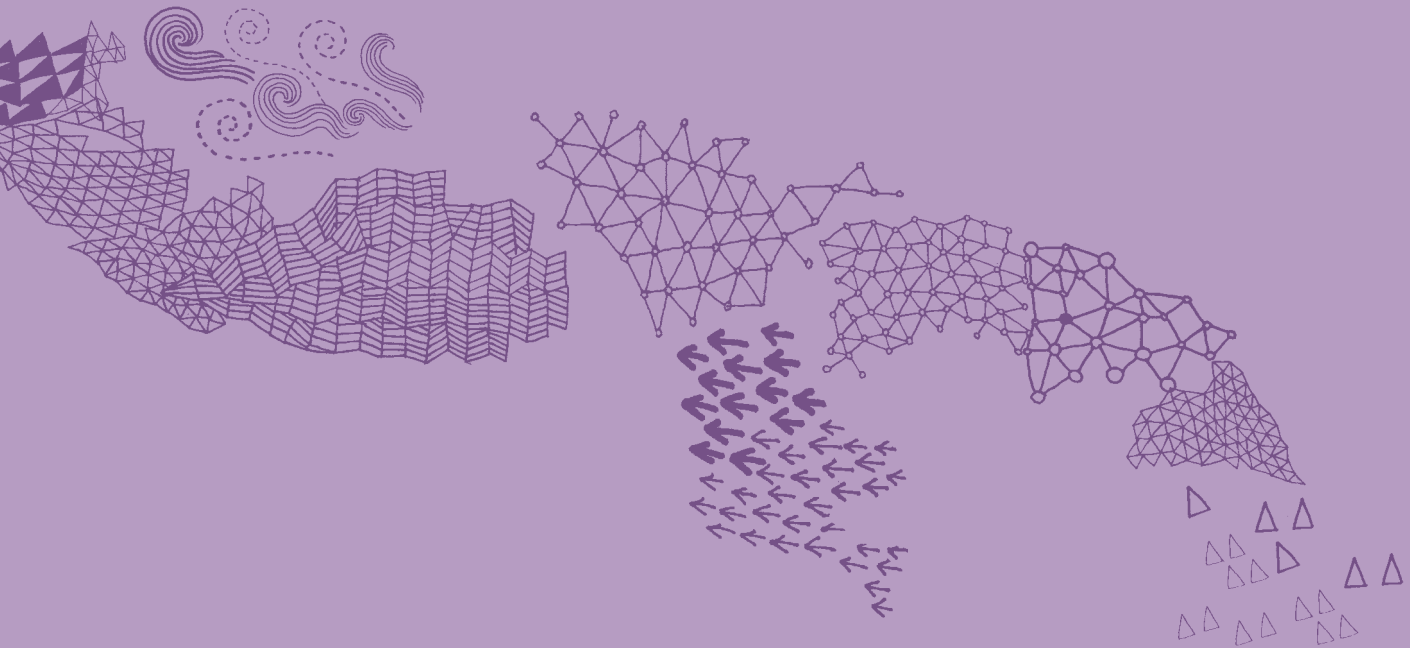


Australian Graduate School of Entrepreneurship (AGSE)
Postgraduate programs in
Strategic Foresight

SWIN
BUR
* NE *

SWINBURNE
UNIVERSITY OF
TECHNOLOGY

WHAT CHOICES WILL YOU MAKE TO CREATE YOUR FUTURE?




POSTGRADUATE PROGRAMS AT AGSE

The Faculty of Business and Enterprise is a leading provider of business education in Australia, delivering undergraduate and postgraduate programs on campus in Australia as well as at a number of international locations including Vietnam and Malaysia. The faculty benefits from its strong links with employers and professional bodies, both locally and internationally, and our mission is focused on developing the business leaders of tomorrow.

The faculty is one of six academic faculties at Swinburne University of Technology, an innovative education institution with five campuses in Melbourne and one in Sarawak, Malaysia. Swinburne is ranked among the top universities in the world in both the prestigious Shanghai Jiao Tong University Academic Rankings and the Times Higher Education QS World University Rankings. Closer to home, Swinburne is rated the best university in Melbourne for teaching quality and graduate satisfaction (The Good Universities Guide 2010).

The Australian Graduate School of Entrepreneurship (AGSE) is the faculty's graduate school. The AGSE has been leading the delivery of postgraduate business and management education for more than 30 years, and is Australia's only graduate school dedicated to the development of entrepreneurs. We combine practical theory with experiential learning to develop entrepreneurial leaders and innovative thinkers who have the required knowledge and skills to succeed in an often turbulent and challenging environment.

The AGSE established the renowned AGSE International Entrepreneurship Research Exchange. This international premier conference is a forum for the exchange and celebration of entrepreneurship research undertaken around the world in a collegial spirit.



Our programs are underpinned by high quality research and teaching excellence. Learn from commercially experienced academics, in courses that are practical and relevant to industry.

MASTER OF MANAGEMENT (STRATEGIC FORESIGHT)

GRADUATE DIPLOMA OF MANAGEMENT (STRATEGIC FORESIGHT)

GRADUATE CERTIFICATE OF MANAGEMENT (STRATEGIC FORESIGHT)

The Master of Management (Strategic Foresight) aims to introduce students to ways of conceiving the world, which may be different to what they have previously thought. It also addresses the real probability that human civilisation faces significant environmental, social and cultural challenges that could overwhelm the institutions of government, business and civil society. The course prepares you to adequately respond to these challenges through the building of robust thinking frames and intervention strategies.

The program provides a sound foundation for the successful practice of strategic foresight in many fields. It will primarily appeal to those who are already high achievers part-way through a career path and who wish to develop proactive approaches to their work, or perhaps change direction. To these ends, the program provides the necessary grounding in futures studies and foresight work as well as a range of applied implementation options.

Who should study strategic foresight?

This program is specifically relevant for:

- People seeking careers and qualifications in future-oriented strategy and change management
- Managers seeking knowledge and qualifications in the strategic management of future challenges and opportunities
- People seeking inputs into policy making for government
- People who are looking for the edge in thinking that will offer individuals and organisations innovative and creative solutions to problems

Career opportunities

There is demand for those with strategic foresight expertise in multinational technology, construction and beverage entities, as well as government policy areas and niche consulting firms with a focus on strategy and sustainability. Marketing and human resource professionals, educators, corporate executives and entrepreneurs have also found that strategic foresight gives them a unique and distinctive edge in their professions.

Admission requirements

The normal admissions requirement for the Master of Management (Strategic Foresight) suite of programs is an undergraduate degree and appropriate advanced work experience. Candidates who do not hold a degree but have significant work experience will usually be enrolled in the graduate certificate (Stage 1).

Applicants at the Master of Management (Strategic Foresight) level should comply with one of the following:

- Successful completion of the Graduate Diploma of Management (Strategic Foresight) with satisfactory grades
- Completion of a relevant degree or diploma

A limited number of applicants not meeting the criteria above may be admitted after interview on the basis of considerable relevant experience and level of responsibility.

Program structure

The Master of Management (Strategic Foresight) requires the satisfactory completion of 12 units of study. You can choose to exit the program at graduate certificate level (four units of study) or at graduate diploma level (eight units of study), subject to meeting pre/co-requisite requirements.

Location

The program is delivered at Swinburne's Hawthorn campus.

Program length

Master of Management (Strategic Foresight) – 1.5 years full-time or equivalent part-time

Intakes

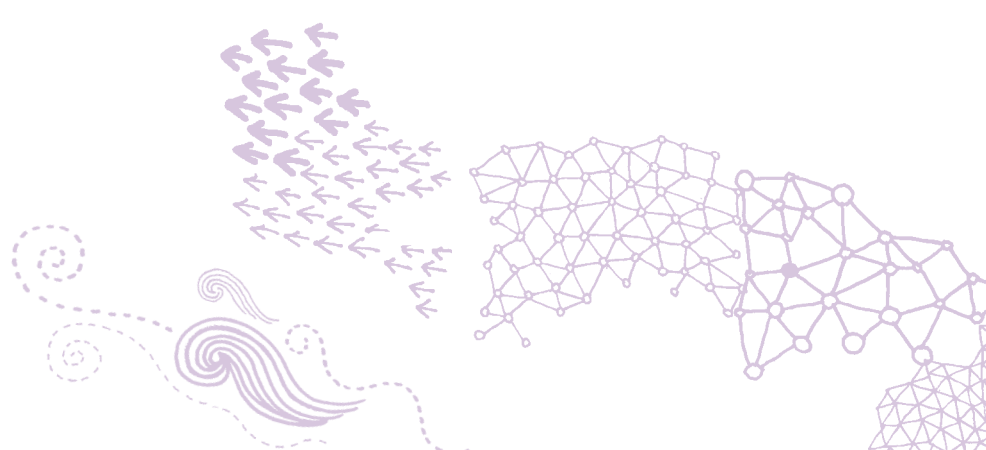
February, August

Units of study

GRADUATE CERTIFICATE AND GRADUATE DIPLOMA UNITS	
HBF540	The Knowledge Base of Future Studies
HBF541	Foresight Methods 1
HBF542	Foresight in Organisations
HBF543	Dimensions of Global Change
HBF544	Foresight Methods 2
HBF545	Worldviews and Strategy for the 21st Century
HBF546	Integral Perspectives
HBF547	Systems Thinking and Design

MASTER UNITS	
Option 1	
HBR680	Enterprise Project 1
HBR681	Enterprise Project 2
	Two approved elective units
Option 2	
HEI884	Minor Thesis (Research Methods)
HEI885	Minor Thesis (Full-time)
OR	
HEI886	Minor Thesis (Part-time)
HEI887	Minor Thesis (Part-time)

For specific unit and course information:
www.swinburne.edu.au/courses



HBF540 The Knowledge Base of Futures Studies

Outlines the core components of futures studies and provides you with a number of concepts, overviews of methods, tools, and 'maps' or 'guides' to the territory. This foundational knowledge will allow you to locate yourself (and/or your organisation) within a disciplinary matrix and begin the process of acquiring 'fluency' in futures/foresight enquiry.

HBF541 Foresight Methods 1

Surveys a range of analytic and interpretative methods used in futures studies/foresight to provide you with an overview of what methods are available, and to provide experience of some of them. Representative methods will be examined in some depth, in order to give you a solid theoretical and practical understanding of the main types of methods so that you can make informed judgements and decisions about the use of particular methods in applied foresight work. This unit is a prerequisite for HBF544 Foresight Methods 2.

HBF542 Foresight in Organisations

Integrates the theory and practice of futures studies/foresight with that of organisational strategy and change. While the latter two have become a 'generic' activity for a wide range of organisations, foresight has not yet been widely applied to it. The view taken here is that 'foresight refreshes strategy and illuminates change opportunities'. The addition of a coherent forward view in any organisation brings to the fore new factors, options, possible strategies and, in so doing, provides new inputs to any strategic or planning process. Case studies and models of implementation are presented and organisational implications are examined.

HBF543 Dimensions of Global Change

Provides an opportunity to apply the concepts, methods and practices of futures studies/foresight in order to construct a coherent forward view of any topic of interest that is global in scope (e.g. world governance) or global in potential impact (e.g. nanotechnology). You will choose a topic of interest, research it, and write up your research for a senior decision maker. You will also collaborate with other students to develop a shared model of your combined topics and present that understanding to the class.

HBF544 Foresight Methods 2

Deepens your knowledge of the foresight methods that were covered in HBF541 Foresight Methods 1 (unit prerequisite) and introduces you to a range of advanced foresight methods. This unit is highly relevant if you wish to facilitate foresight processes or integrate foresight methodologies with organisational strategy, innovation, leadership or change processes.

HBF545 Worldviews and Strategy for the 21st Century

Explores the dimensions of the early 21st century from a wide range of viewpoints using a number of frameworks, perspectives and approaches. The unit examines a number of key areas of continuity and change thereby enabling you to understand the nature of the forward view at a global level and in a variety of contexts. It will serve to contextualise your more detailed work in other areas of foresight implementation and strategy.

HBF546 Integral Perspectives

Provides an in-depth understanding of a set of conceptual frameworks in the emerging discipline of integral theory, of which ideas can be applied to foresight and other disciplines. It provides you with a set of important tools to consider any issue or problem from the broadest possible perspective. By doing so, innovative and original pathways and opportunities can arise. The theory also enables you to consider your own perspectives and how these shape how you interact with others.

HBF547 Systems Thinking and Design

Builds your capabilities to use a suite of systems thinking and design methodologies and, through structured case study applications, how to apply these methods to complement foresight methods covered elsewhere in the strategic foresight program. This unit has a strong practical application and implementation emphasis. It will be directly relevant if you wish to facilitate foresight processes as interventions in a range of settings including business and volunteer organisations, community groups or other settings where practical improvement is sought.

HBR680 Enterprise Project 1

This unit is the first part of a core pair with HBR681 Enterprise Project 2 and involves preparation for undertaking a project in the latter. The two-unit sequence provides a unique opportunity to utilise the knowledge gained from previous and concurrently studied units to demonstrate the application of theory and knowledge to a real situation, task or challenge, as well as derive theory from such work, and so demonstrate praxis. The 'hands-on' approach is intended to provide you with the skills and experiences to become either a researcher or a more successful and effective manager and innovator within an organisation.

HBR681 Enterprise Project 2

This unit is the second part of a core pair with Enterprise Project 1 and involves undertaking the project planned in that previous unit.

HEI884 Minor Thesis (Research Methods)

The Research Methods seminar is designed to develop your understanding of some of the skills required to undertake a professional investigation that involves a significant level of research. It emphasises the importance of formulating and articulating the research question, and the relationship of the research question to appropriate methodologies. You are introduced to a range of methodologies, both quantitative and qualitative, and the assumptions that underpin them. Using your thesis proposals as a starting point and basis for this seminar, practical skills will be developed.

HEI885/886/887 Minor Thesis

In the Minor Thesis unit you will demonstrate that you can appropriate and then apply the conceptual and methodological material offered in the seminars and the Research Methods unit of the program. In particular it will demonstrate your capacity to critically evaluate relevant concepts and methods, as well as your ability to describe clearly, argue cogently and communicate appropriately. Successful completion of the Minor Thesis will also serve as a stepping stone to future doctoral study for those students interested in this pathway.

General information

Gretchen Young Foresight practitioner, Young Futures

"I chose Swinburne because it offered this program, which was unavailable anywhere else in Australia. I live in Brisbane, but wanted a face-to-face learning format. The flexible learning options at Swinburne made this format accessible to me in a way that no other interstate programs could.

I was seeking further studies related to issues of leadership and ethics within organisations and society. The Strategic Foresight program was a perfect match by inquiring into the futures that we might create, and how we might anticipate and respond to the futures that may 'come our way'.

My experience at Swinburne gave me at least three extraordinary things – the best quality, most passionate teaching I have ever experienced; connection with a wonderful cohort of diverse and interesting peers; and innovative curriculum that has expanded my personal, professional, and intellectual worlds in ways I never could have anticipated when I began the program."



Facilities

As a Swinburne student you will automatically gain access to a range of facilities and services. These include a well-resourced library, computer laboratories, fitness and health facilities, personal and career counselling, housing, employment and financial advice.

Fees

In 2011, tuition fees for this program are based on \$2300 per 12.5 credit point unit of study. In the event that a unit of study is derived from another program, the applicable fee will be that of the other program. All fees are reviewed each year and may increase without notice.

	Units	Fees
Graduate Certificate	4	\$9,200
Graduate Diploma	8	\$18,400
Master	12	\$27,600

FEE-HELP

FEE-HELP is a government funded loan that helps eligible fee-paying students pay their tuition fees. FEE-HELP is not available to New Zealand citizens and most holders of Australian permanent visas, however, it is available to Australian citizens and holders of a permanent humanitarian visa.

For further information visit: www.goingtouni.gov.au

English proficiency

Students whose first language is not English must provide evidence of advanced proficiency in written and spoken English:

- IELTS overall band of 6.5 (Academic Module) with no individual band less than 6.0; or
- TOEFL 575 with TWE score not less than 50; or
- Proof of previous recognised studies (e.g. bachelor degree) taught in English

Application procedure

If you are an Australian resident you can find application information and apply directly at www.swinburne.edu.au/postgrad

International students should apply through Swinburne International. For further information visit: www.international.swinburne.edu.au

Applications should be accompanied by:

- A certified copy of original transcripts of official results for previous academic qualifications
- Current résumé or curriculum vitae
- English language test score, if English is not your first language
- Certified copies of proof of identity as follows:
 - Australian citizens: birth certificate, or extract of birth certificate or Australian passport or Certificate of Australian Citizenship
 - Permanent residents: passport containing Permanent Resident visa label or a letter from DIAC indicating Evidence of Resident Status in Australia

Recognition of Prior Learning (RPL)

Credit may be granted to students based on the completion of relevant prior tertiary studies. We will make an assessment of your RPL in conjunction with your enrolment application so all supporting documentation needs to be supplied. Please note: units completed more than 10 years prior to enrolment at Swinburne are not admissible for RPL purposes.

Transition into Postgraduate Study (TPS)

The Transition into Postgraduate Study (TPS) orientation workshop is an interactive and fast-paced on-campus induction program for all commencing Faculty of Business and Enterprise postgraduate students. It gives you the opportunity to gain the knowledge and insight that would help you to hit the ground running when you start your course.

During the TPS program you will be warmly welcomed into the Swinburne community. You have the opportunity to meet your fellow students and academic staff, find out about the learning facilities available on-campus, and learn about how to manage the transition into a postgraduate learning environment.

International students

If you want to study at Swinburne but are not an Australian resident, telephone Swinburne International on (+61 3) 8676 7002 or 1800 897 973 from within Australia, or visit: www.swinburne.edu.au/international

Further information

Telephone: 1300 275 794
Email: postgrad@swinburne.edu.au
www.swinburne.edu.au/business/agse

Important semester dates

We take applications throughout the year. The semester start dates for 2011 are as follows:

Semester 1

February intake	28 February 2011
Winter Term (Global Leadership Program)	20 June 2011

Semester 2

August intake	8 August 2011
September intake (MBA and Global Leadership Program)	26 September 2011

These dates are correct at time of printing but are subject to change. For current semester dates: www.swinburne.edu.au/calendar

Where we are

Hawthorn campus
John Street,
Hawthorn Vic 3122

Lilydale campus
Melba Avenue,
Lilydale Vic 3140

Prahran campus
144 High Street,
Prahran Vic 3181

Questions?

1300 ASK SWIN
(1300 275 794)
www.swinburne.edu.au
postgrad@swin.edu.au

For information on
postgraduate events visit:
www.swinburne.edu.au/postgrad

CRICOS Provider Code: 00111D
The information contained in this course guide was correct at the time of publication, September 2010. The university reserves the right to alter or amend the material contained in this guide. The information in this guide does not apply to international students. For information about courses for international students please go to: www.international.swinburne.edu.au

SP0743-06-0910



INFORMATION SESSIONS

Information sessions are held regularly throughout the year. They are a great opportunity to meet and talk to staff about your postgraduate study options.

The sessions help you understand what your chosen postgraduate program entails – what you can learn and what your study options are and where your qualification may take you.

For session dates visit
www.swinburne.edu.au/postgrad
or call us on 1300 ASK SWIN

